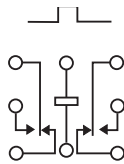


HC · HCD · HCS · HCSD

HC · HCS

STANDARD • SENSITIVE
.100 GRID COMMERCIAL RELAY



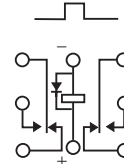
TERMINAL VIEW

FEATURES

- Hermetically sealed
- Mounting Pads
- Excellent RF switching

HCD · HCSD

STANDARD • SENSITIVE
.100 GRID DIODE SUPPRESSED
COMMERCIAL RELAY



TERMINAL VIEW

FEATURES

- Suppression Diode
- Hermetically sealed
- Mounting Pads
- Excellent RF switching

ELECTRICAL CHARACTERISTICS

CONTACT ARRANGEMENT
2 Form C (DPDT)

CONTACT MATERIAL
Stationary:
Gold/platinum/palladium/silver alloy
(gold plated)

Moveable:
Gold/platinum/palladium/silver alloy
(gold plated)

CONTACT RESISTANCE
Before Life:
100 milliohms max.
(measured @ 10 mA @ 6 Vdc)

After Life:
200 milliohms max.
(measured @ 1 A @ 28 Vdc)

MECHANICAL LIFE EXPECTANCY
1 million operations

ELECTRICAL CHARACTERISTICS

COIL VOLTAGE
5 to 26.5 Vdc (HC/HCD)
5 to 48 Vdc (HCS/HCSD)

COIL POWER
HC/HCD:
660 mW max. @ 25°C

HCS/HCSD:
565 mW max. @ 25°C

DUTY CYCLE
Continuous

PICK-UP VOLTAGE
Approximately 70% of
nominal coil voltage

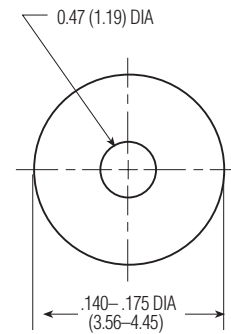
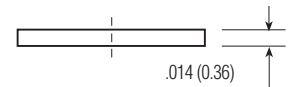
PICK-UP SENSITIVITY
HC/HCD:
180 mW max. @ 25°C

HCS/HCSD:
90 mW max. @ 25°C

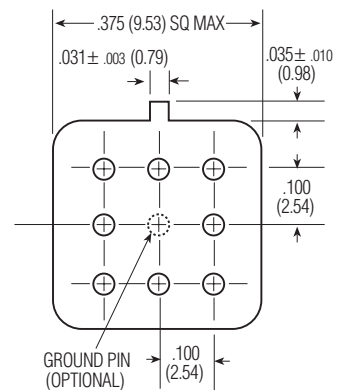
OPERATING CHARACTERISTICS

CONTACT RATINGS

CONTACT LOAD	TYPE	OPERATIONS MIN.
1.0 A @ 28 Vdc	Resistive	100,000
250 mA @ 115 Vac, 60 Hz & 400 Hz	Resistive (Case not grounded)	100,000
100 mA @ 115 Vac, 60 Hz & 400 Hz	Resistive	100,000
0.2 A @ 28 Vdc	Inductive (0.32 Henry)	100,000
0.1 A @ 28 Vdc	Lamp	100,000
30 µA @ 50 mVdc	Low Level	1,000,000



MOUNTING PAD



HEADER

HC · HCD · HCS · HCSD

100 GRID HIGH-PERFORMANCE RELAYS

TIMING

Operate Time:
HC/HCD: 4.0 ms max.
HCS/HCSD: 6.0 ms max.

Release Time:
HC: 3.0 ms max.
HCS: 3.0 ms max.
HCD: 6.0 ms max.
(suppression diode)
HCSD: 7.5 ms max.
(suppression diode)

DIELECTRIC WITHSTANDING VOLTAGE

Between Open Contacts:
350 Vrms 60 Hz

Between Adjacent Contacts:
350 Vrms 60 Hz

Between Contacts & Coil:
350 Vrms 60 Hz

INSULATION RESISTANCE

1,000 megohms @ 500 Vdc

STANDARD COIL DATA

	NOM. COIL VOLTAGE (Vdc)	COIL RESISTANCE IN OHMS ±20% @ 25°C	PICKUP VOLTAGE Vdc (MAX.) @ 25°C	NOM. COIL POWER (mW) @ 25°C	MAX. COIL VOLTAGE	COIL DESIG.
HC/HCD	5.0	64	3.8	391	5.8	5
	6.0	98	4.9	367	8.0	6
	9.0	220	7.0	368	12.0	9
	12.0	400	9.0	360	16.0	12
	18.0	880	14.0	368	24.0	18
	26.5	1,600	18.0	439	32.0	26
HCS/HCSD	5.0	100	3.5	250	7.5	5
	6.0	200	4.5	180	10.0	6
	9.0	400	6.8	203	15.0	9
	12.0	800	9.0	180	20.0	12
	18.0	1,600	13.5	203	30.0	18
	26.5	3,200	18.0	219	40.0	26
	36.0	6,500	24.0	199	57.0	36
	48.0	11,000	32.0	209	75.0	48

ENVIRONMENTAL CHARACTERISTICS

TEMPERATURE RANGE

-55°C to + 85°C

WEIGHT

HC/HCD:
0.09 oz. (2.55 gms)

HCS/HCSD:
0.15 oz. (4.30 gms)

VIBRATION RESISTANCE

10 G's, 10 to 500 Hz

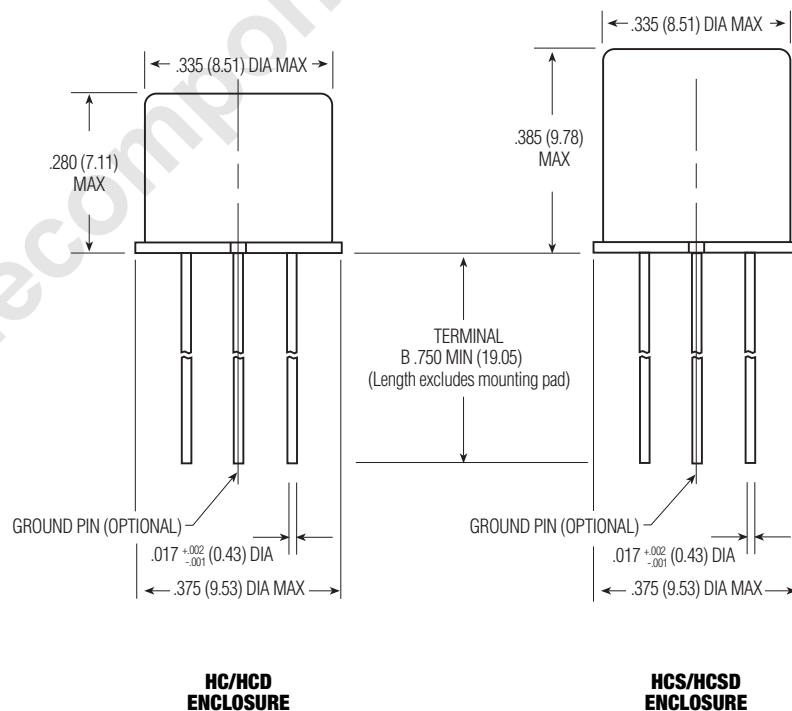
SHOCK RESISTANCE

30 G's, 6 ±1 ms

SEMICONDUCTOR CHARACTERISTICS

DIODE

100 Vdc peak inverse voltage (PIV)
1.0 Vdc max. transient voltage



HC/HCD ENCLOSURE

HCS/HCSD ENCLOSURE

SPECIFYING A PART NUMBER EXAMPLE:

TYPE HC **DIODES** D **GROUND PIN** X **MOUNTING PADS** 3 **COILS** -26 **TERMINALS** B