

DK Series

Enhanced Performance K Series RFI Power Line Filters



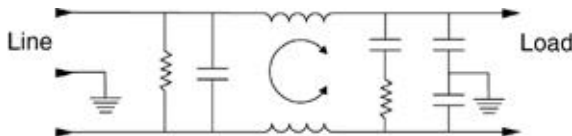
**UL Recognized
CSA Certified
VDE Approved**

DK Series

The DK series RFI power line filters are general purpose common mode and differential mode filters with higher performance line-to-line attenuation than the VK series.

The EDK series has the same high performance line-to-line attenuation while still meeting the very low leakage current requirements of SEV, VDE portable equipment and UL544 nonpatient care equipment.

Electrical Schematic



Resistor location for reference only.



Specifications

	VDK Models	EDK Models
Maximum leakage current, each line-to-ground		
@ 120 VAC 60 Hz:	.4 mA	.22 mA
@ 250 VAC 50 Hz:	.7 mA	.38 mA
Hipot rating (one minute):		
line-to-ground	2250 VDC	
line-to-line	1450 VDC	
Operating frequency:	50/60 Hz	
Rated voltage:	120/250 VAC	
Rated current:	@ 120 VAC	@ 250 VAC
1VDK/1EDK	1A	1A
3VDK/3EDK	3A	3A
6VDK/6EDK	6A	6A
10VDK/10EDK	10A	8A
20EDK/20EDK	20A	16A

Minimum insertion loss in dB:

Line-to-ground in 50 ohm circuit

Current Rating	Frequency-MHz					
	.15	.5	1	5	10	30

VDK Models

1A, 3A	18	30	40	48	48	40
6A, 10A, 20A	10	22	30	39	44	50

EDK Models

1A, 3A	17	27	33	45	45	40
6A, 10A, 20A	10	19	25	34	40	46

Line-to-line in 50 ohm circuit

Current Rating	Frequency-MHz					
	.15	.5	1	5	10	30

VDK, EDK Models

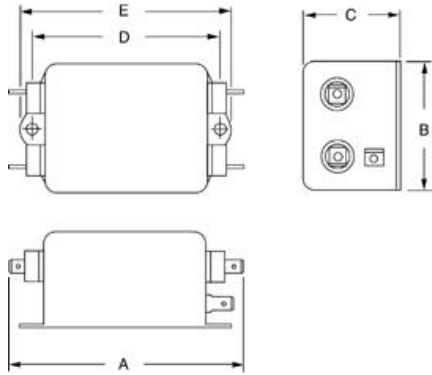
1A, 3A	18	47	62	60	50	45
6A, 10A, 20A	20	43	55	65	60	55

Series DK

Case Styles

Metric shown in italics.

VDK1/EDK1

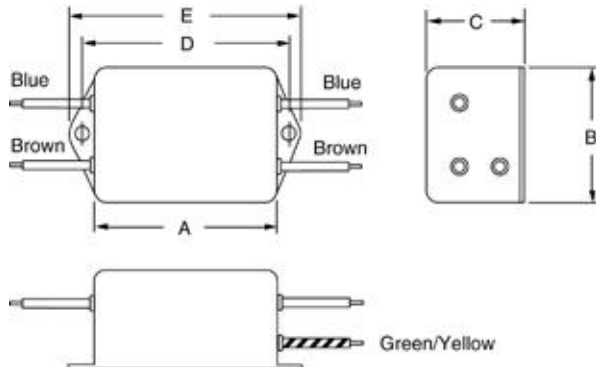


Typical dimensions

Terminals: $\frac{.250}{6.35}$ (5) Holes: $\frac{.07}{1.8}$ Dia.(4) Slot: $\frac{.07 \times .16}{1.8 \times 4.1}$

Mounting holes: $\frac{.188}{4.78}$ Dia.(2)

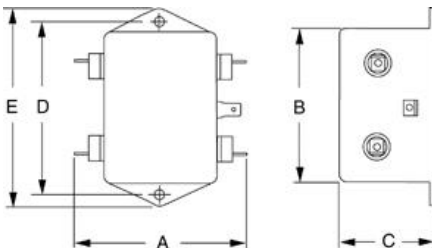
VDK3/EDK3



Typical dimensions

Wire leads: $\frac{4.0}{101.6}$ Min. Mounting holes: $\frac{.188}{4.78}$ Dia. (2)

20VDK1/20EDK1

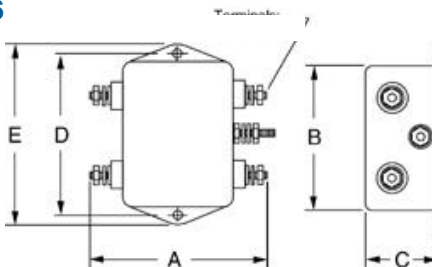


Typical dimensions

Terminals: $\frac{.250}{6.35}$ (5) Holes: $\frac{.07}{1.8}$ Dia.(4) Slot: $\frac{.07 \times .16}{1.8 \times 4.1}$

Mounting holes: $\frac{.188}{4.78}$ Dia.(2)

20VDK6



Torque 18± 2 in.lb.

Case Dimensions

Metric shown in italics.

Part No.	A (max)	B (max)	C (max)	D $\pm .015$ $\pm .38$	E (max)
1VDK1, 1EDK1	$\frac{3.35}{85.1}$	$\frac{2.07}{52.6}$	$\frac{1.16}{29.5}$	$\frac{2.375}{60.33}$	$\frac{2.81}{71.4}$
1VDK3, 1EDK3	$\frac{2.07}{52.6}$	$\frac{2.07}{52.6}$	$\frac{1.16}{29.5}$	$\frac{2.375}{60.33}$	$\frac{2.81}{71.4}$
3VDK1, 3EDK1	$\frac{3.85}{97.8}$	$\frac{2.07}{52.6}$	$\frac{1.16}{29.5}$	$\frac{2.938}{74.63}$	$\frac{3.35}{85.1}$
6VDK1, 6EDK1	$\frac{3.85}{97.8}$	$\frac{2.07}{52.6}$	$\frac{1.16}{29.5}$	$\frac{2.938}{74.63}$	$\frac{3.35}{85.1}$
10VDK1, 10EDK1	$\frac{3.85}{97.8}$	$\frac{2.07}{52.6}$	$\frac{1.32}{33.5}$	$\frac{2.938}{74.63}$	$\frac{3.35}{85.1}$
10VDK3, 10EDK3	$\frac{2.57}{65.3}$	$\frac{2.07}{52.6}$	$\frac{1.32}{33.5}$	$\frac{2.938}{74.63}$	$\frac{3.35}{85.1}$
20VDK1, 20EDK1	$\frac{3.85}{97.8}$	$\frac{2.58}{65.5}$	$\frac{1.78}{45.2}$	$\frac{2.938}{74.63}$	$\frac{3.35}{85.1}$
20VDK6	$\frac{3.46}{87.9}$	$\frac{2.58}{65.5}$	$\frac{1.78}{45.2}$	$\frac{2.938}{74.63}$	$\frac{3.35}{85.1}$

Pricing

Consult your local Corcom sales representative for pricing.

Part No.	Part No.
1VDK1	1EDK1
1VDK3	1EDK3
3VDK1	3EDK1
3VDK3	3EDK3
6VDK1	6EDK1
6VDK3	6EDK3
10VDK1	10EDK1
10VDK3	10EDK3
20VDK1	20EDK1
20VDK6	