

EF Series

Compact RFI Filter with IEC Connectors



**UL Recognized
CSA Certified
VDE, SEV†, SEMKO*, and BSI* Approved**

EF Series

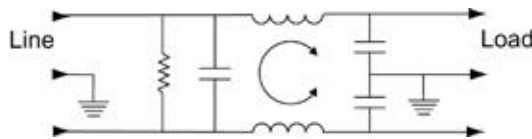
This rugged international series of RFI filters incorporates the special IEC power line connector. They are UL recognized, CSA certified, and VDE and SEV approved. Models with F suffix are SEMKO approved and comply with BSI standards.

Electrically the EF international series are general purpose filters effectively providing RFI control of line-to-ground noise. The design is compact and meets the very low leakage current requirements of SEV and VDE portable equipment as well as (120 Volt) UL544 nonpatient medical equipment. Models with F suffix have .250" terminals on load side; EF4 and EF8 have wire leads.

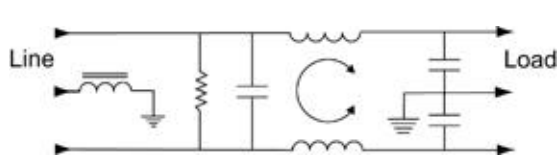
Model 10EF1FC additionally incorporates a separate ground-circuit inductor to isolate the equipment chassis from power line ground at RF frequencies.

Electrical Schematics

EF & EF-F Models



EF1FC Model



Resistor location for reference only.



Specifications

Maximum leakage current, each
line-to-ground @ 120 VAC 60 Hz: .21 mA
@ 250 VAC 50 Hz: .36 mA

Hipot rating (one minute):
line-to-ground 2250 VDC
line-to-line 1450 VDC

Operating frequency: 50/60 Hz

Rated voltage: 120/250 VAC

Minimum insertion loss in dB:

Line-to-ground in 50 ohm circuit

Current Rating	Frequency-MHz					
	.15	.5	1	5	10	30

EF1F, EF2F

1A	22	35	40	46	50	49
3A	15	25	30	45	50	54
6A	9	20	25	41	45	50
10A	8	15	20	34	39	44
15A	-	6	12	20	25	25

EF4, EF8

1A	22	35	40	46	50	49
3A	15	25	30	45	50	54
6A	9	20	25	41	45	47

EF1FC

10A	8	15	20	34	39	44
-----	---	----	----	----	----	----

Line Cord

Line Cord No. GA400:

7 1/2 foot, 3-conductor line cord to mate with EF series.

EAA models supersede EF series.

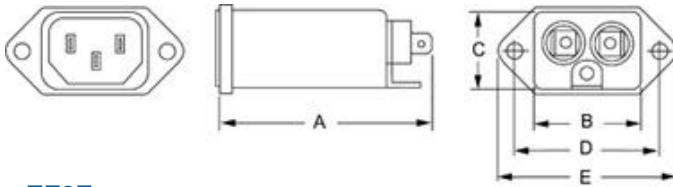
* 1A, 3A, 6A, and 15A EF-F models only.
† Except Style 4, 8, and 15A.

Series EF

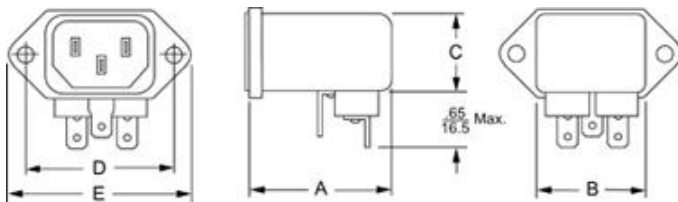
Case Styles

Metric shown in italics.

EF1F & EF1FC



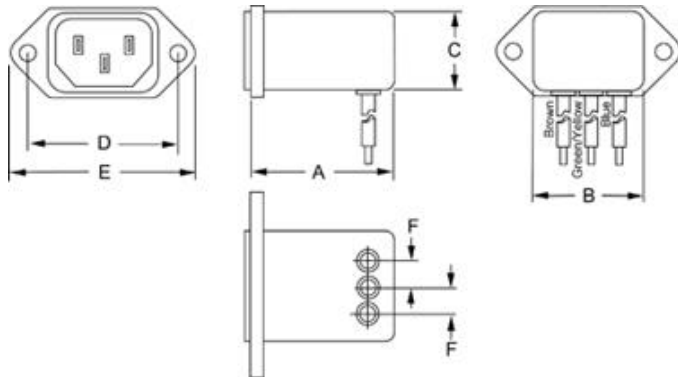
EF2F



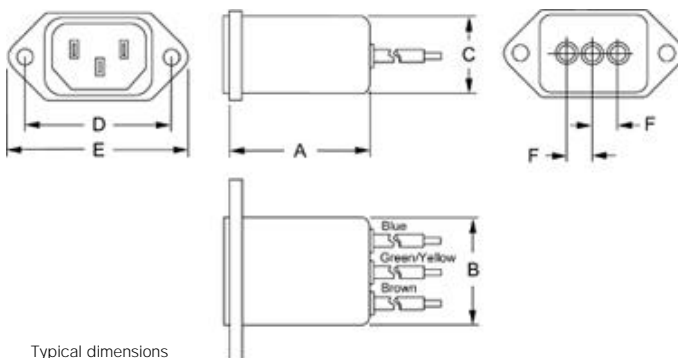
Typical dimensions

Terminals: $\frac{.250}{6.35}$ (3) Holes: $\frac{.07}{1.8}$ Dia.(2) Slot: $\frac{.07 \times .16}{1.8 \times 4.1}$

EF4



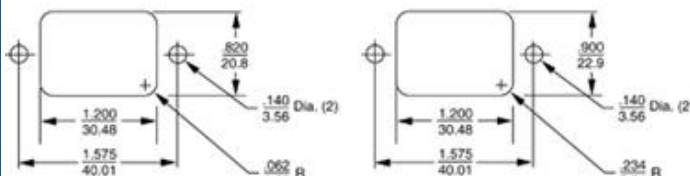
EF8



Typical dimensions

Wire leads: $\frac{4.0}{101.6}$ Min. 18 AWG Mounting holes: $\frac{.132}{3.35}$ Dia.(2)

Recommended Panel Cutouts



Panel cutout (Front mount)

Tolerance $\pm \frac{.005}{0.13}$

Panel cutout (Back mount)

Tolerance $\pm \frac{.005}{0.13}$

Note 1: EF1F, EF1FC and EF8 allow front or back mounting.
Note 2: EF2F and EF4 allow back mounting only.

Libertyville, IL (847) 680-7400

Case Dimensions

Metric shown in italics.

Part No.	A (max)	B (max)	C (max)	D $\pm .015$ $\pm .38$	E (max)	F (ref)
1EF1F,	<u>2.2</u>	<u>1.19</u>	<u>0.81</u>	<u>1.575</u>	<u>1.98</u>	—
3EF1F	<u>55.9</u>	<u>30.2</u>	<u>20.6</u>	<u>40.01</u>	<u>50.3</u>	—
1EF2F,	<u>1.55</u>	<u>1.19</u>	<u>0.85</u>	<u>1.575</u>	<u>1.98</u>	—
3EF2F	<u>39.4</u>	<u>30.2</u>	<u>21.6</u>	<u>40.01</u>	<u>50.3</u>	—
1EF4,	<u>1.55</u>	<u>1.19</u>	<u>0.85</u>	<u>1.575</u>	<u>1.98</u>	<u>.295</u>
3EF4	<u>39.4</u>	<u>30.2</u>	<u>21.6</u>	<u>40.01</u>	<u>50.3</u>	<u>7.5</u>
1EF8,	<u>1.55</u>	<u>1.19</u>	<u>0.81</u>	<u>1.575</u>	<u>1.98</u>	<u>.295</u>
3EF8	<u>39.4</u>	<u>30.2</u>	<u>20.6</u>	<u>40.01</u>	<u>50.3</u>	<u>7.5</u>
6EF1F	<u>2.2</u>	<u>1.19</u>	<u>0.81</u>	<u>1.575</u>	<u>1.98</u>	—
	<u>55.9</u>	<u>30.2</u>	<u>20.6</u>	<u>40.01</u>	<u>50.3</u>	—
6EF2F	<u>1.55</u>	<u>1.19</u>	<u>0.85</u>	<u>1.575</u>	<u>1.98</u>	—
	<u>39.4</u>	<u>30.2</u>	<u>21.6</u>	<u>40.01</u>	<u>50.3</u>	—
6EF4	<u>1.55</u>	<u>1.19</u>	<u>0.85</u>	<u>1.575</u>	<u>1.98</u>	<u>.295</u>
	<u>39.4</u>	<u>30.2</u>	<u>21.6</u>	<u>40.01</u>	<u>50.3</u>	<u>7.5</u>
6EF8	<u>1.55</u>	<u>1.19</u>	<u>0.81</u>	<u>1.575</u>	<u>1.98</u>	<u>.295</u>
	<u>39.4</u>	<u>30.2</u>	<u>20.6</u>	<u>40.01</u>	<u>50.3</u>	<u>7.5</u>
10EF1F	<u>2.62</u>	<u>1.19</u>	<u>0.81</u>	<u>1.575</u>	<u>1.98</u>	—
	<u>66.5</u>	<u>30.2</u>	<u>20.6</u>	<u>40.01</u>	<u>50.3</u>	—
10EF1FC	<u>2.62</u>	<u>1.19</u>	<u>0.81</u>	<u>1.575</u>	<u>1.98</u>	—
	<u>66.5</u>	<u>30.2</u>	<u>20.6</u>	<u>40.01</u>	<u>50.3</u>	—
*15EF1F	<u>2.62</u>	<u>1.19</u>	<u>0.81</u>	<u>1.575</u>	<u>1.98</u>	—
	<u>66.5</u>	<u>30.2</u>	<u>20.6</u>	<u>40.01</u>	<u>50.3</u>	—

Pricing

Consult your local Corcom sales representative for pricing.

Part No.	Part No
1EF1F	6EF1F
1EF2F	6EF2F
1EF4	6EF4
1EF8	6EF8
3EF1F	10EF1F
3EF2F	10EF1FC
3EF4	15EF1F
3EF8	

Line Cord No. GA400

Insulating Boot No. FA601

*15 EF1F

UL, CSA 15 Amps/250VAC

VDE 10 Amps/250VAC