

# SR Series

## AC Connectors



**UL Recognized**  
**CSA Certified**  
**VDE Approved**  
**SEV Approved**  
**SEMKO Approved†**



6ESRM-P



6ESRM-3



6ESRMC2

## SR Series

The SR series includes a full line of popular AC receptacles. These male and female power line connectors include snap-in and flange mounted models. All have complete safety agency approvals for worldwide usage.

## Specifications

Operating voltages:	125, 250 VAC
Materials:	
Insulator:	Thermoplastic (UL V-2 flame class)
Prongs:	Solid brass, nickel plated
Terminals:	Brass, tin plated
Power connector:	Appliance inlet according to CEE 22/VI (XIV), IEC 320/VI, DIN 49457/1, SEV Type 113, SNV 24573
Temperature rating:	For "cold" connections, 65° C

## AC Connectors

Part Number	Current Rating @ UL/CSA	Current Rating @ VDE	Input Configuration	Output Terminals		Mounting	
				Style	Terminal Dimensions (in./mm)	Style	Panel Thickness (in./mm)♦
6ESRM-P	15	10	Male	PC Terminals	Fit .063/1.6 Hole	Flange	-
6ESRM-3	15	10	Male	Quick Disconnect	.25 x .032/ 6.3 x 0.8	Flange	-
6ESRMC2	15	10	Male	Quick Disconnect	.187 x .032/ 4.8 x 0.8	Snap-in	.059/1.5
6ESRFC3	15*	10	Female	Quick Disconnect	.25 x .032/ 6.3 x 0.8	Snap-in	.059/1.5
6ESRF-3	15*	10	Female	Quick Disconnect	.25 x .032/ 6.3 x 0.8	Flange	-

\* UL recognized and CSA certified for 15 amps at 125V. VDE approved for 10 amps at 250V.  
♦ Panel thickness tolerance is  $\pm .004"$  ( $\pm .10mm$ ).

Consult your local Corcom sales representative for pricing.



6ESRFC3



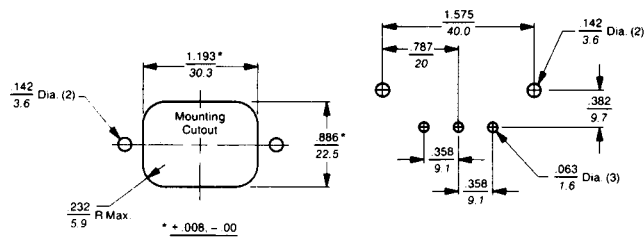
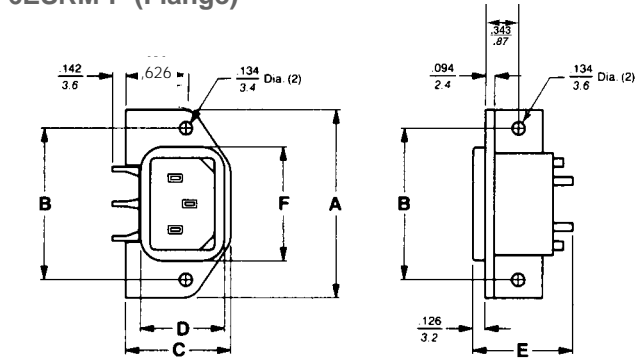
6ESRF-3

†Except 6ESRF-3 and 6ESRFC3 models.

## Case Styles

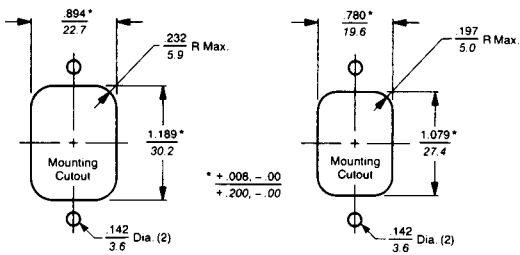
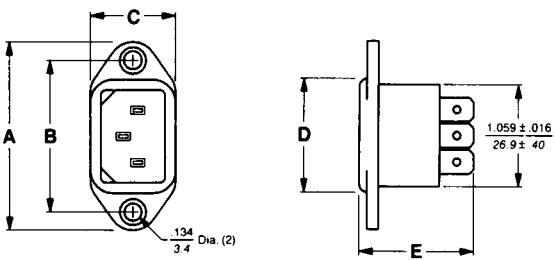
Metric shown in italics.

### 6ESRM-P (Flange)



Rear mount

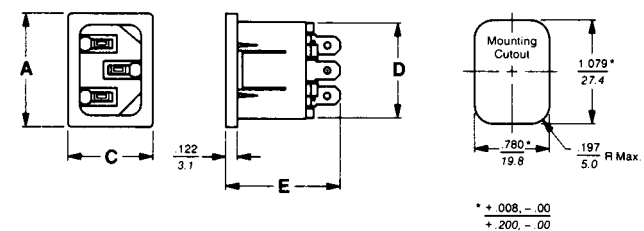
### 6ESRM-3 (Flange)



Rear mount

Front mount

### 6ESRMC2 (Snap-in)



Front mount

## Case Dimensions

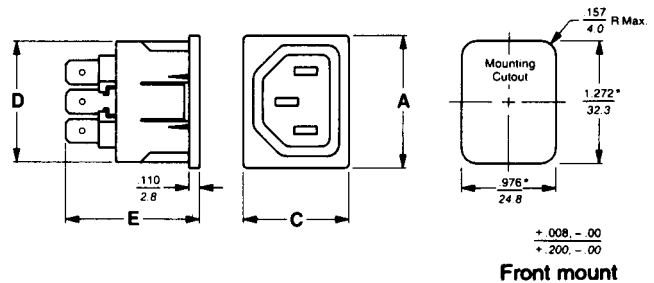
Metric shown in italics.

Part No.	A (max)	B <i>±.017- .006</i> (max)	C (max)	D (max)	E (max)	F (max)
6ESRM-P	1.969 <i>50.0</i>	1.575 <i>40.0</i>	1.11 <i>28.2</i>	0.88 <i>22.4</i>	1.051 <i>26.7</i>	1.192 <i>30.28</i>
6ESRM-3	1.977 <i>50.2</i>	1.575 <i>40.0</i>	0.896 <i>22.8</i>	1.187 <i>30.1</i>	1.224 <i>31.09</i>	—
6ESRMC2	1.197 <i>30.4</i>	—	0.892 <i>22.7</i>	1.078 <i>27.4</i>	1.205 <i>30.6</i>	—
6ESRFC3	1.39 <i>35.3</i>	—	1.11 <i>28.2</i>	1.258 <i>31.95</i>	1.406 <i>35.7</i>	—
6ESRF-3	1.969 <i>50.0</i>	1.575 <i>40.0</i>	1.154 <i>29.3</i>	1.258 <i>31.95</i>	1.406 <i>35.6</i>	—

## Case Styles

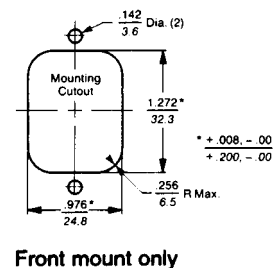
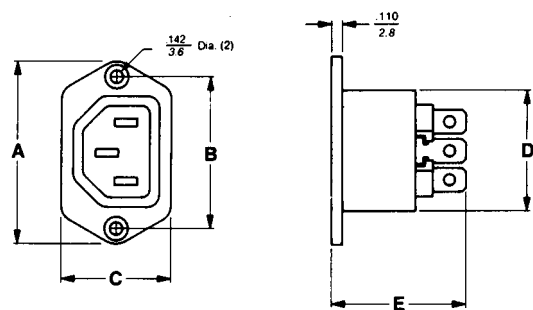
Metric shown in italics.

### 6ESRFC3 (Snap-in)



Front mount

### 6ESRF-3 (Flange)



Front mount only