

U Series

**RFI Filter
for Power Factor Corrected
Power Supplies**



**UL Recognized
CSA Certified
VDE Approved**

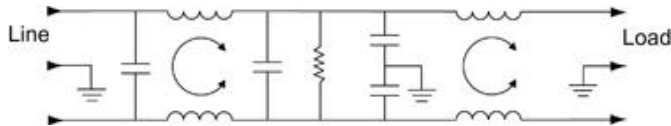
U Series

Corcom's U series is designed to meet the RFI needs created by power factor corrected power supplies. This high performance filter offers a high impedance circuit to mismatch the power supply's impedance characteristics. The economical design allows superior performance at a reasonable price.

The PC board mountable version has a low profile case which adapts well to most modular power converter applications.

All models meet low leakage current requirements of SEV, VDE portable equipment, and (120 Volt) UL544 and UL2601 nonpatient medical equipment.

Electrical Schematic



Resistor location for reference only.



6EU1



6EUP

Specifications

| | |
|--|--|
| Maximum leakage current, each line-to-ground | |
| @ 120VAC 60 Hz: | .30 mA |
| @ 250VAC 50 Hz: | .50 mA |
| Hipot rating (one minute): | |
| line-to-ground | 2250 VDC |
| line-to-line | 1450 VDC |
| Operating frequency: | 50/60 Hz |
| Rated voltage: | 120/250 VAC |
| Rated current: | 6.5 amps @ 120 VAC 6.5 amps @ 250 VAC |

Minimum insertion loss in dB:

Line-to-ground in 50 ohm circuit

| Current Rating | Frequency-MHz | | | | | | | |
|----------------|---------------|----|-----|----|----|----|----|----|
| | .05 | .1 | .15 | .5 | 1 | 5 | 10 | 30 |
| 6A | 4 | 30 | 40 | 70 | 70 | 70 | 65 | 50 |

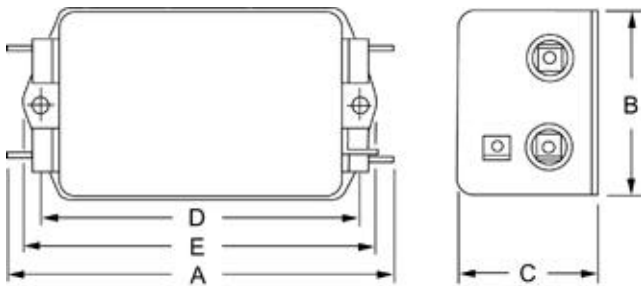
Line-to-line in 50 ohm circuit

| Current Rating | Frequency-MHz | | | | | | | |
|----------------|---------------|----|-----|----|----|----|----|----|
| | .05 | .1 | .15 | .5 | 1 | 5 | 10 | 30 |
| 6A | 10 | 35 | 45 | 70 | 70 | 70 | 65 | 55 |

Case Styles

Metric shown in italics.

6EU1

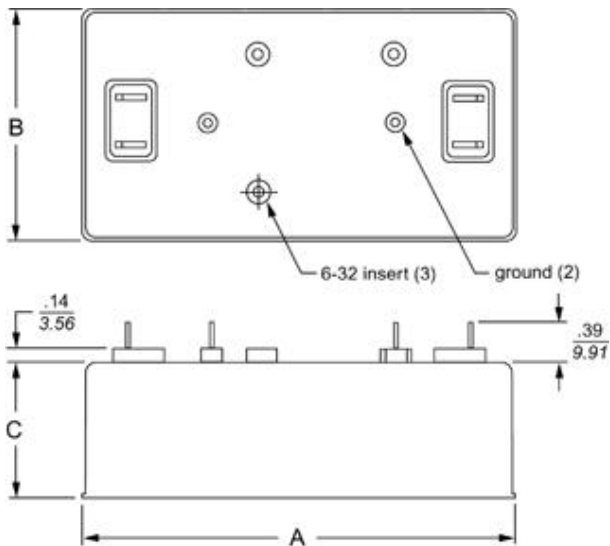


Typical dimensions

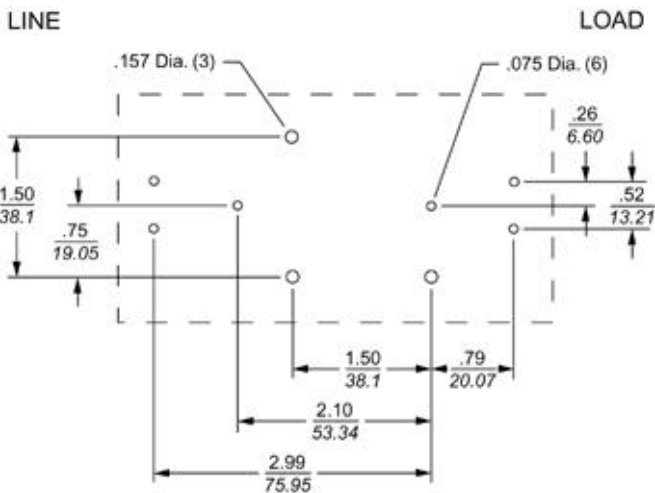
Terminals: $\frac{.250}{6.35}$ (5) Holes: $\frac{.07}{1.8}$ Dia. (4) Slot: $\frac{.07 \times .16}{1.8 \times 4.1}$

Mounting holes: $\frac{.188}{4.78}$ Dia. (2)

6EUP



PC Board Layout



Case Dimensions

Metric shown in italics.

| Part No. | A (max) | B (max) | C (max) | D $\pm .015$ $\pm .38$ | E (max) |
|----------|-----------------------|----------------------|---------------------|------------------------------|-----------------------|
| 6EUP | $\frac{4.7}{119.4}$ | $\frac{2.51}{63.8}$ | $\frac{1.22}{31.0}$ | | |
| 6EU1 | $\frac{4.95}{125.73}$ | $\frac{2.27}{57.66}$ | $\frac{1.8}{45.72}$ | $\frac{4.06}{103.12}$ | $\frac{4.47}{113.54}$ |

Ordering Information

Consult your local Corcom sales representative for pricing.

Available Part Numbers

6EUP
6EU1