

Special configurations

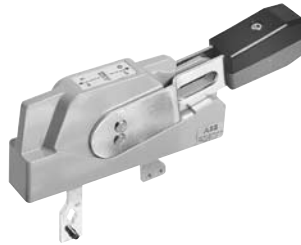
Shaft operated flange

30A - 100A

Disconnect
switches
Non-fusible



Switch



Handle



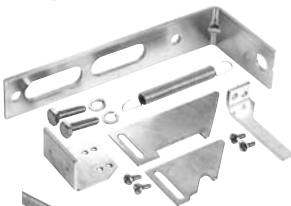
Shaft



OT100F3



DSFHN-HS12



DSFHS-12

30A -100A Flange operated – non fusible switches (Shaft) - 3 pole

UL general purpose amp rating	Catalog number	List price
30	OT30F3-F	\$ 500
60	OT60F3-F	590
100	OT100F3-F	690

Flange handles – for use with OT30_, OT60_, OT100

UL/ NEMA type	Marking	Defeatable	Padlockable	Catalog number	List price
1, 3R, 12	OFF/ON	Yes	Yes	DSFHN-HS12	\$ 156
4, 4X	OFF/ON	Yes	Yes	DSFHN-HS4	240

Shafts

For use with:	Maximum enclosure depth (inches)	Catalog number	List price
OT30_ - OT100_	16	OTFS-16	\$ 25
OT30_ - OT100_	24	OTFS-24	30

Door hardware NEMA 12

Item	Catalog number	List price
Safety door latch, 2 point, door less than 40" high	KDH2R	\$ 200
Safety door latch, 2 point, door greater than 40" high	KDH3R	225

Flange operated fusible and non-fusible disconnect switches

ABB's solution for complying with the new NFPA79 requirements is Flange Operated Fusible and Non-fusible Disconnect Switches.

New 2002 NFPA 79 changes requires main disconnecting means to be operable without the use of accessory tools or devices, independent of door position. This code also includes an interlocking provision to prevent the closing of disconnects while the enclosure door is open, unless an interlock is operated by a deliberate action.

The flange operated disconnect switches are available as rigid shaft or flexible cable operated versions. The cable operated version allows you to install the disconnect switch anywhere in the enclosure depending on the length of the cable. Cables are available in lengths up to 84 inches.

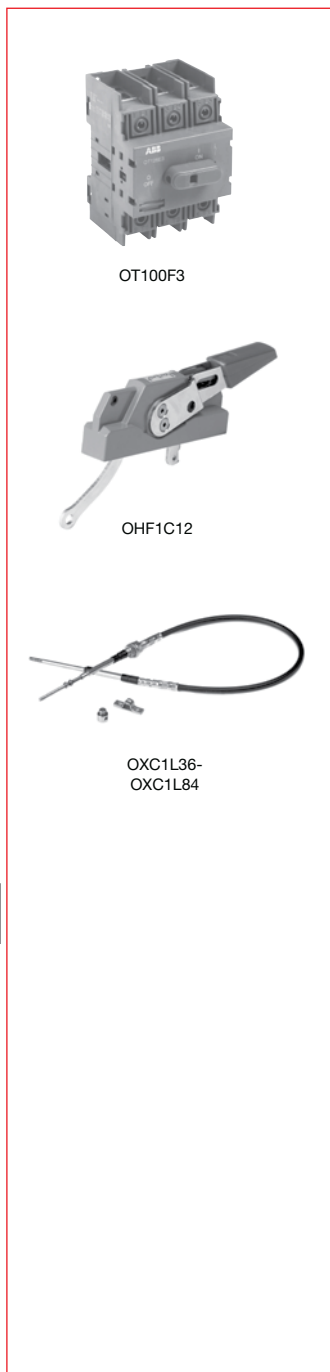
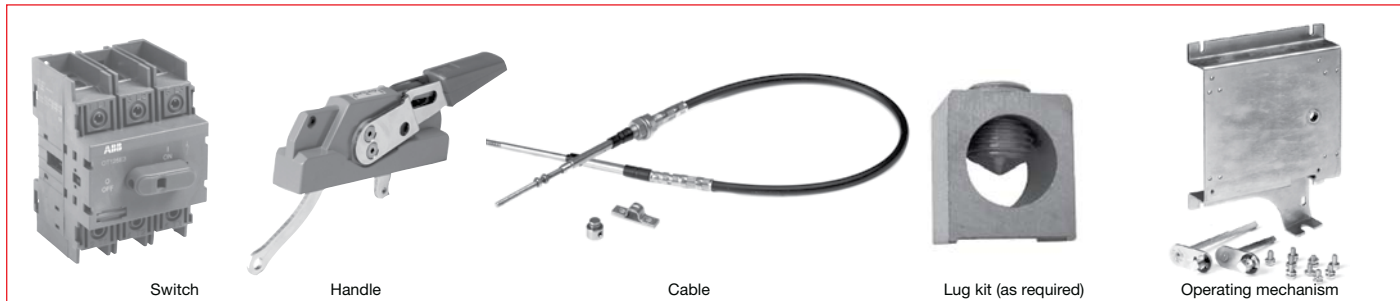
The designs are cost-effective NFPA 79 solutions offering quick and easy installation.

**Disconnect
switches**
Non-fusible

Special configurations

Cable operated flange

30A - 200A



Non-fusible

UL general purpose amp rating	Catalog number	List price
30	OT30F3	\$ 150
60	OT60F3	175
100	OT100F3	200
125	OT160E3	420
200	OT200U30	620

Flange handles — UL98; UL file #E101914

For use with:	Environmental rating	Catalog number	List price
OT30 - 100F3, OT160E3, OT200U30	NEMA 1, 3R, 12	OHF1C12	\$ 213
	NEMA 4, 4X	OHF1C4	243

Flexible cables

For use with:	Cable length (inches)		Catalog number	List price
OT30 - 100F3, OT160E3, OT200U30	36		OXC1L36	\$ 114
	48		OXC1L48	146
	60		OXC1L60	160
	72		OXC1L72	175
	84		OXC1L84	204

Operating mechanisms

For use with:	Catalog number	List price
OT30 - 100F3 OT160E3 OT200U30	MKCS1	\$ 135
	MKCS3	162
	MKCS4	171

Terminal lug kits

For use with	Wire size	Wire type	Description	Lugs per kit	Catalog number	List price
OT200U30	#4 - 300 kcmil	Cu/Al	—	6	OZXA-200	\$ 80
	#4 - 300 kcmil	Cu/Al	—	3	OZXA-200/3	40
	(6) #4-6 AWG	Cu/Al	Distribution lug	3	OZXA-206S	200

Door hardware — NEMA 12

Item	Catalog number	List price
Safety door latch, 2 point, door less than 40" high	KDH2R	\$ 200
Safety door latch, 3 point, door greater than 40" high	KDH2R	200