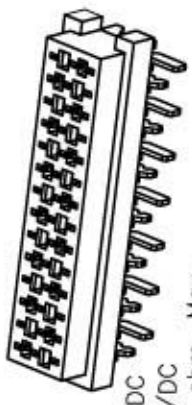
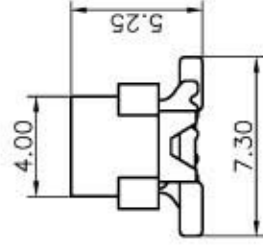
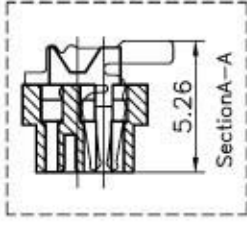
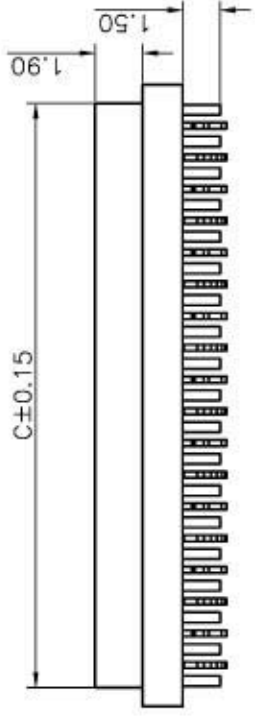
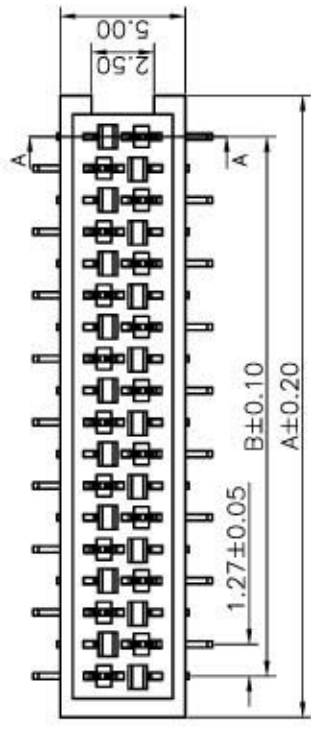


This document is the property of Amphenol Corporation and is delivered on the express condition that it is not to be disclosed, reproduced or used, in whole or in part, for the manufacture or sale by anyone other than Amphenol Corporation without the prior consent, and that no right is granted to disclose or to use any information in this document.



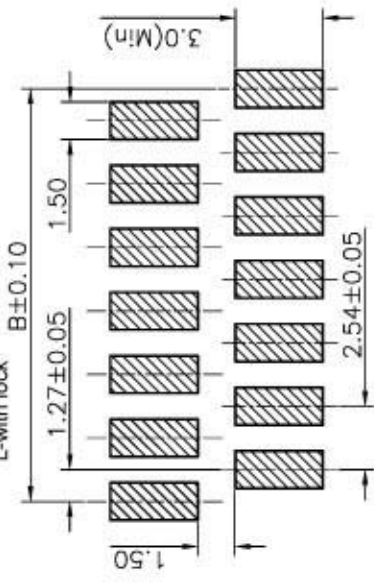
Specifications:

Current Rating: 1.0A AC/DC
 Voltage Rating: 230V AC/DC
 Contact Resistance: 20m ohm. Max.
 Insulation Resistance: 1000M ohm. Min.
 Withstanding Voltage: 500V AC For One Minute
 Operating Temperature Range: -40°C ~ +105°C
 Material and Finish
 Insulator: High Temp. Plastic (UL94V-0)
 Contact: Phosphor Bronze
 Finish: Tin Plated

How to Order

TMM-X-X-XX-X

- Type
- 1- IDC Male
 - 2- IDC Plug
 - 3- DIP Male Straight
 - 4- DIP Female Straight
 - 5- DIP Female R/A
 - 6- SMT Female Straight
- Locking System
- 0- without lock
 - L- with lock
- Packaging
- 1- Tape & Reel
 - 2- Tube
 - 3- Bag
- Number of Positions
- 04, 06, 08, 10, 12, 14,
 16, 18, 20, 22, 24 or 26



PCB Layout

Pos	A	B	C	Pos	A	B	C
4	7.00	3.81	5.60	16	22.24	19.05	20.84
6	9.54	6.35	8.14	18	24.78	21.59	23.38
8	12.08	8.89	10.68	20	27.32	24.13	25.92
10	14.62	11.43	13.22	22	29.86	26.67	28.46
12	17.16	13.97	15.76	24	32.40	29.21	31.00
14	19.70	16.51	18.30	26	34.94	31.75	33.54



TOLERANCE (mm)	APPROVALS	DATE	TITLE
X: ±0.3	DESIGN: Stephane	28/OCT/06	TMM Series SMT Female
X.X: ±0.1	CHECKED: Rob	28/OCT/06	
X.XX: ±0.05	WORKED: Rob	28/OCT/06	
(PLUS OTHERS SPEC'D)	UNIT:	MM	SIZE: A4
			Scale N.A. Sheet 1 of 1
			REV: C
			AMPHENOL Amphenol European Design Center
			TMM-6-0-XX-X