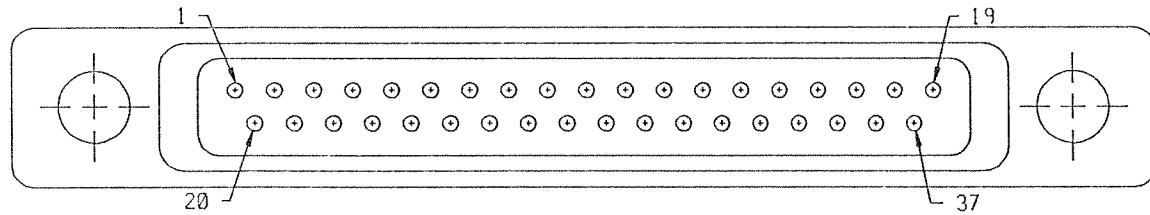
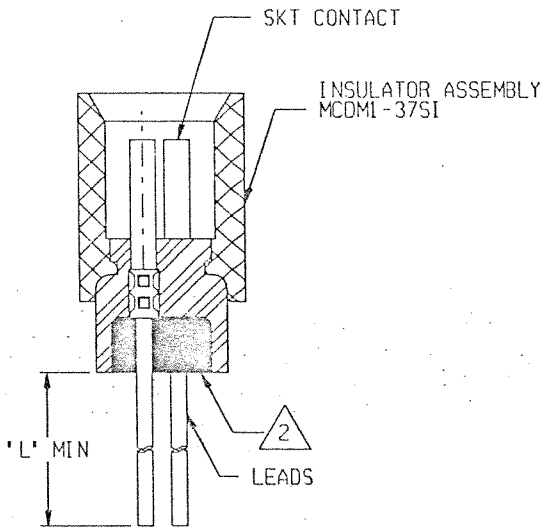
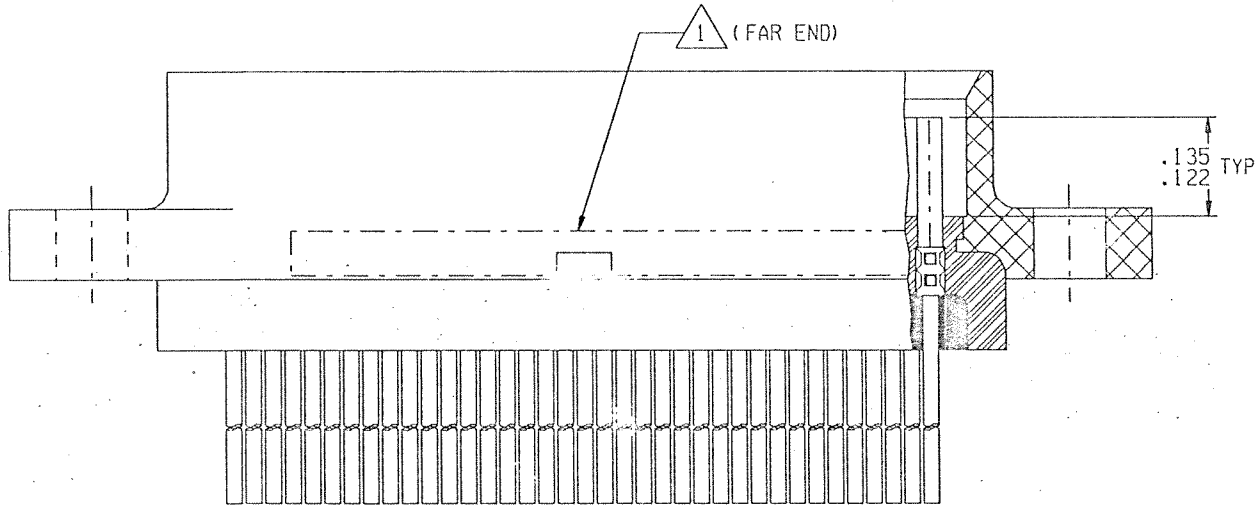
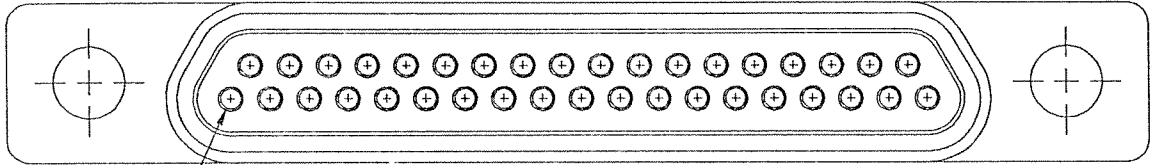



REVISION					
ZONE	LTR	ECN	DESCRIPTION	DATE	APPROVED
	C	39399	GENERAL DWG UPDATE		<i>g/lock</i>



1532143-9

- NOTES: UNLESS OTHERWISE SPECIFIED
- ▲ MARK PER TIS.
 - ▲ POTTING COMPOUND USED IS 194-8102-6215/6225.
 - 3. CRIMP LEADS INTO CONTACTS PER MEP 302-05.
 - 4. EPOXY WICKING FROM THE REAR OF THE CONNECTOR ON INSULATED LEADS MUST NOT EXCEED .125 MAX ON #25 AWG AND SMALLER LEADS AND .200 MAX ON #24 AWG AND LARGER LEADS.

UNLESS OTHERWISE SPECIFIED DIMENSIONS ARE IN INCHES. TOLERANCE ARE:	APPROVALS		 MICRODOT CONNECTORS A DIVISION OF UNI-STAR INDUSTRIES INC. 306 PASADENA AVE., SO. PASADENA, CA 91030	PROD CODE 842		
	FRACTIONS DECIMALS ANGLES ± 1/8 .XX ± .01 ± 2° .XXX ± .005	SIGNATURE			DATE	METAL SHELL 'D' CONNECTOR MCDMI-B-37S
MATERIAL:	DRAWN BY MEL F. CAMPOS	DATE 09/28/99	P.E. <i>g/lock</i>	SIZE A	CODE IDENT NO. 93278	
FINISH:	THIS DOCUMENT IS THE PROPERTY OF MICRODOT CONNECTORS, A DIVISION OF UNI-STAR INDUSTRIES INC. USE OF THIS DOCUMENT OR ANY PART THEREOF IS STRICTLY FORBIDDEN WITHOUT THE EXPRESS WRITTEN PERMISSION OF MICRODOT CONNECTORS, A DIVISION OF UNI-STAR INDUSTRIES INC.					D.A.