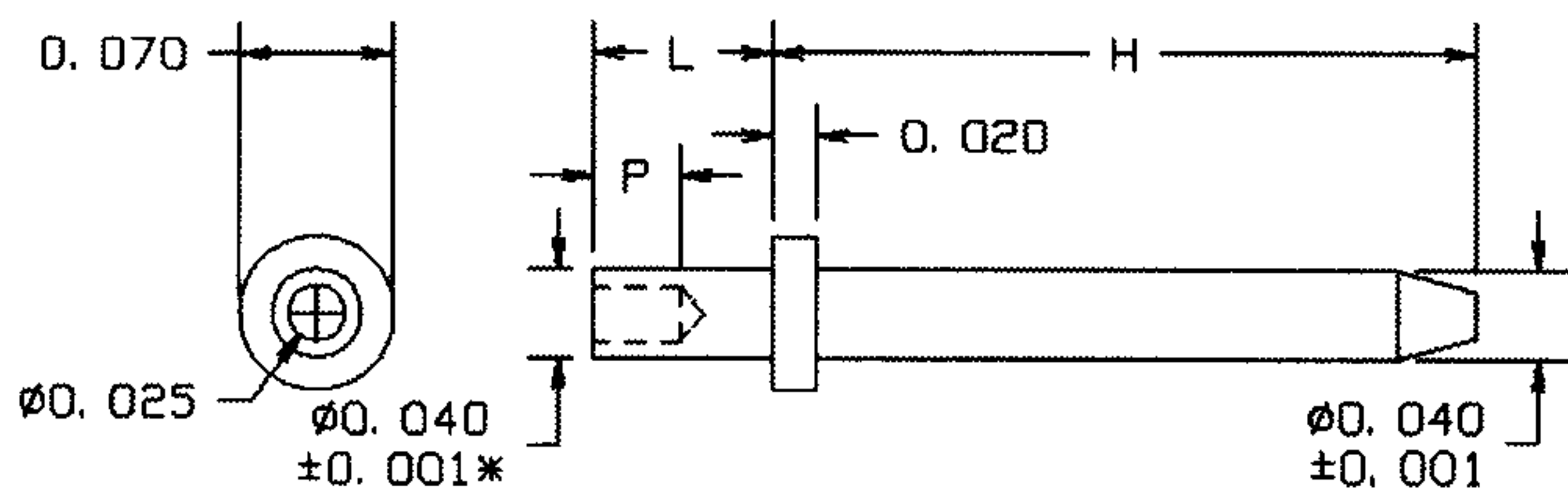


# P.C.PINS

## 09-8XXX-X-XX P.C. PIN .040 MATERIAL: BRASS

10-9XX-X-XX  
10-8XXX-X-XX

BASIC PART NO. FINISH



\*FOR 10-8023 IS .040±.0015

RECOMMENDED MOUNTING HOLE .043±.001 DIA. (#57 DRILL)

PART NO	H	L	P	BOARD THK.	STANDARD (XX) FINISH
09-8053-3-05	.120	.125	.062	3/32	(05)ELECTRO-SOLDER
09-8115-2-03	.150	.090	.060	1/16	(03)GOLD
10-917-1-XX	.170	.051	.040	1/32	(03)GOLD or
-2-XX	.170	.082	.040	1/16	(04)ELECTRO-TIN
-3-XX	.170	.113	.040	3/32	
10-8023-1-XX	.208	.051	.040	1/32	(03)GOLD or
-2-XX	.208	.082	.040	1/16	(04)ELECTRO-TIN
-3-XX	.208	.113	.040	3/32	
10-916-1-XX	.320	.051	.040	1/32	(03)GOLD or
-2-XX	.320	.082	.040	1/16	(04) ELECTRO-TIN
-3-XX	.320	.113	.040	3/32	
10-990-1-XX	.520	.051	.040	1/32	(03)GOLD or
-2-XX	.520	.082	.040	1/16	(04) ELECTRO-TIN
-3-XX	.520	.113	.040	3/32	
10-972-1-XX	.770	.051	.040	1/32	(03)GOLD or
-2-XX	.770	.082	.040	1/16	(04)ELECTRO-TIN
-3-XX	.770	.113	.040	3/32	
10-974-1-XX	1.020	.051	.040	1/32	(03)GOLD or
-2-XX	1.020	.082	.040	1/16	(04)ELECTRO-TIN
-3-XX	1.020	.113	.040	3/32	

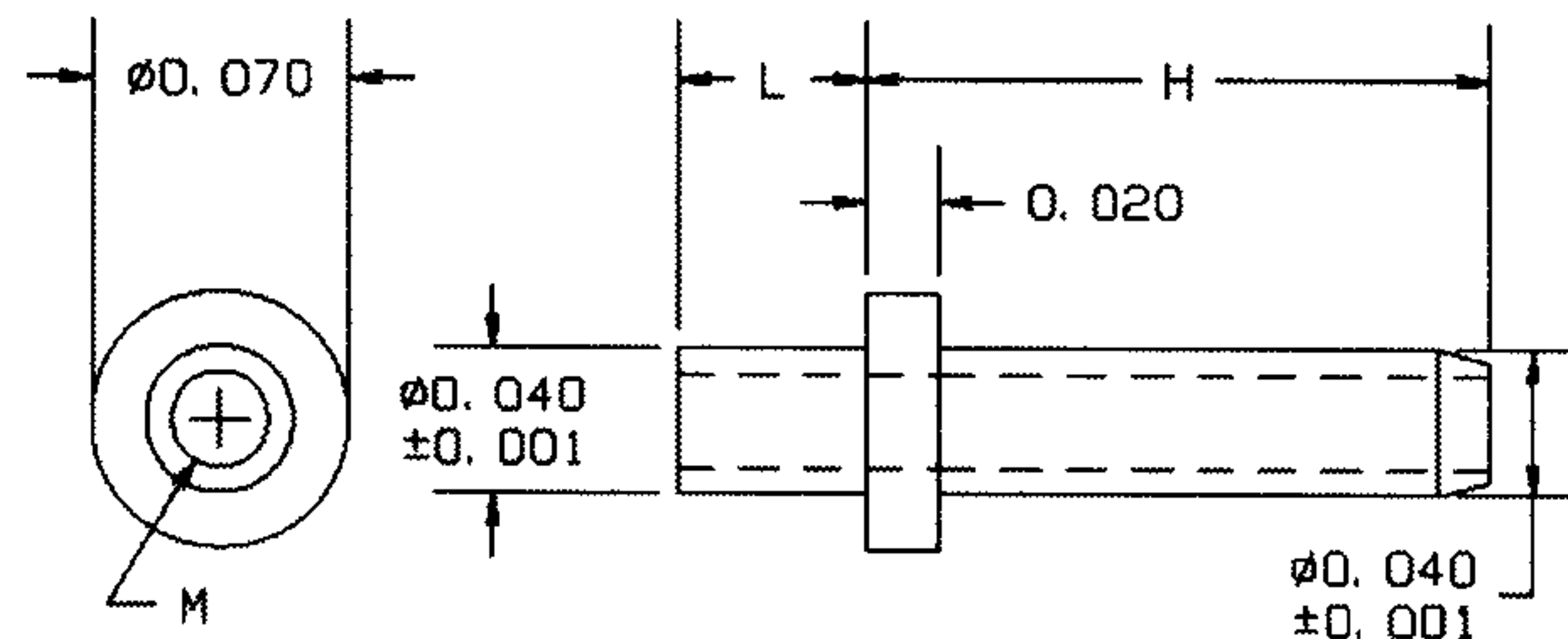
TOOLS

ANVIL	PUNCH
TA70-40-20	TP40-25

## 09-8XXX-X-XX P.C. PIN .040 THRU HOLE MATERIAL: BRASS

10-9XX-X-XX

BASIC PART NO. FINISH



RECOMMENDED MOUNTING HOLE .043±.001 DIA. (#57 DRILL)

PART NO	H	L	M	BOARD THK.	STANDARD (XX) FINISH
10-920-1-XX	.120	.051	.026	1/32	(03)GOLD or
-2-XX	.120	.082	.026	1/16	(04)ELECTRO-TIN
-3-XX	.120	.113	.026	3/32	
10-919-1-XX	.170	.051	.026	1/32	(03)GOLD or
-2-XX	.170	.082	.026	1/16	(04)ELECTRO-TIN
-3-XX	.170	.113	.026	3/32	
10-8025-1-03	.190	.045	.025	1/32	(03)GOLD
10-918-1-XX	.320	.051	.026	1/32	(03)GOLD or
-2-XX	.320	.082	.026	1/16	(04)ELECTRO-TIN
-3-XX	.320	.113	.026	3/32	
10-971-1-XX	.520	.051	.026	1/32	(03)GOLD or
-2-XX	.520	.082	.026	1/16	(04)ELECTRO-TIN
-3-XX	.520	.113	.026	3/32	
10-973-1-XX	.770	.051	.026	1/32	(03)GOLD or
-2-XX	.770	.082	.026	1/16	(04)ELECTRO-TIN
-3-XX	.770	.113	.026	3/32	
10-975-1-XX	1.020	.051	.026	1/32	(03)GOLD or
-2-XX	1.020	.082	.026	1/16	(04)ELECTRO-TIN
-3-XX	1.020	.113	.026	3/32	

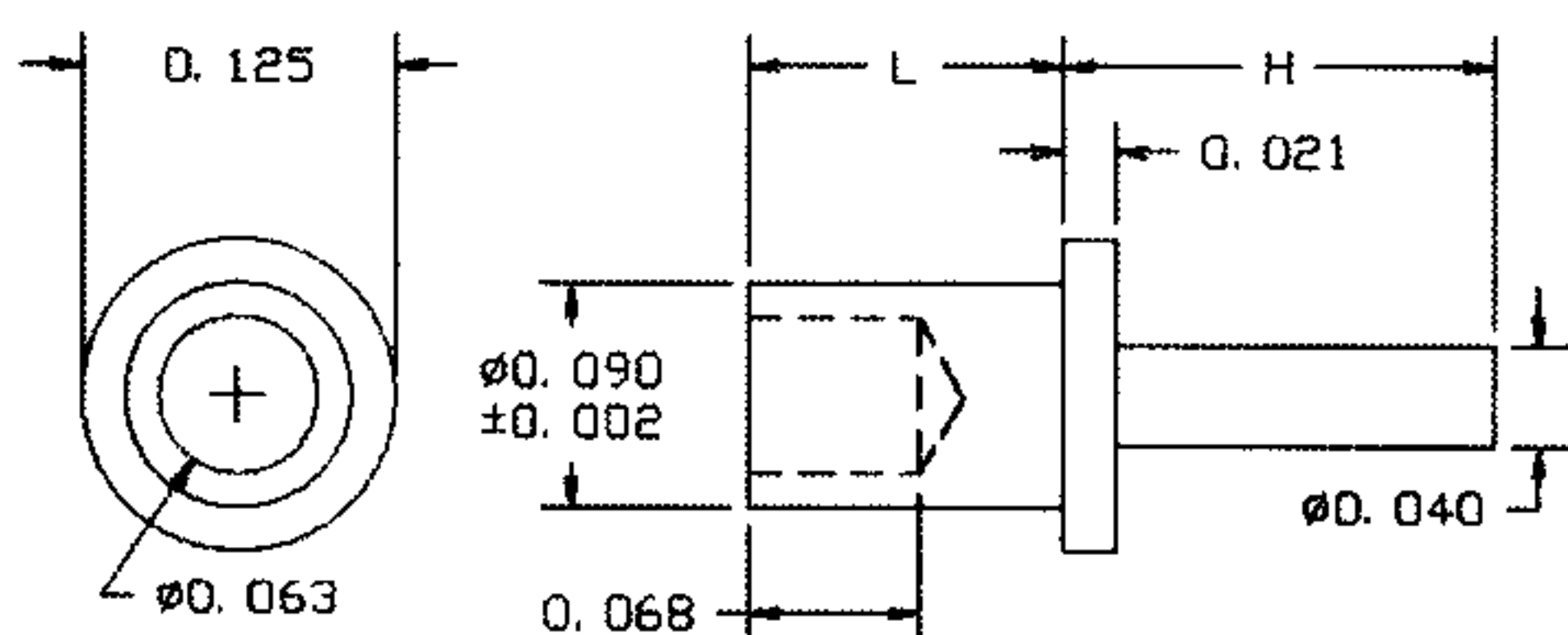
TOOLS

ANVIL	PUNCH
TA70-40-20	TP40-25

## 10-8XXX-X-XX P.C. PIN .040 MATERIAL: BRASS

BASIC PART NO. FINISH

STANDARD FINISH (XX):  
(03)GOLD  
(04)ELECTRO-TIN



RECOMMENDED MOUNTING HOLE .094 DIA. (#42 DRILL)

PART NO.	H	L	BOARD THK.
10-861-2-XX	.172	.094	1/16
-3-XX	.172	.125	3/32
-4-XX	.172	.156	1/8
10-862-2-XX	.250	.094	1/16
-3-XX	.250	.125	3/32
10-863-3-XX	.313	.125	3/32
10-864-2-XX	.521	.094	1/16

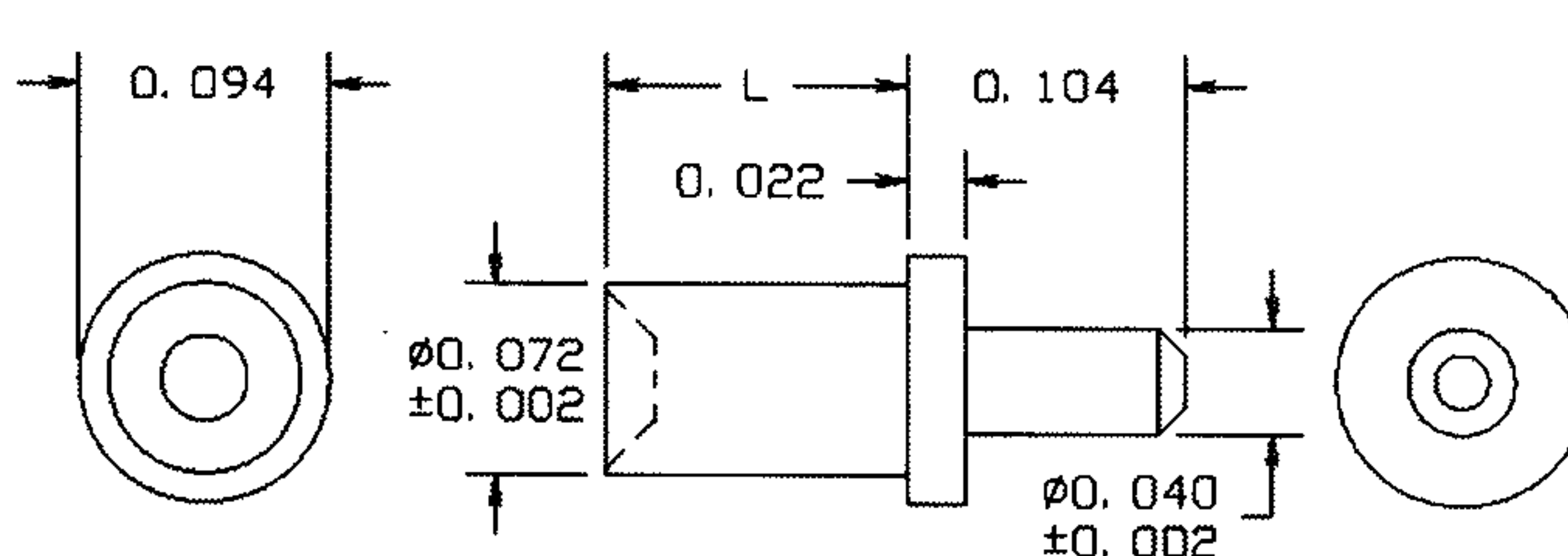
TOOLS

ANVIL	PUNCH
TA125-40-21	TP90-64

## 09-8171-X-03 P.C. PIN .040 MATERIAL: BRASS

BASIC PART NO. FINISH

STANDARD FINISH: GOLD



RECOMMENDED MOUNTING HOLE .076 DIA. (#48 DRILL)

PART NO.	L	BOARD THK.
09-8171-1-03	.051	1/32
-2-03	.082	1/16
-3-03	.113	3/32
-4-03	.145	1/8

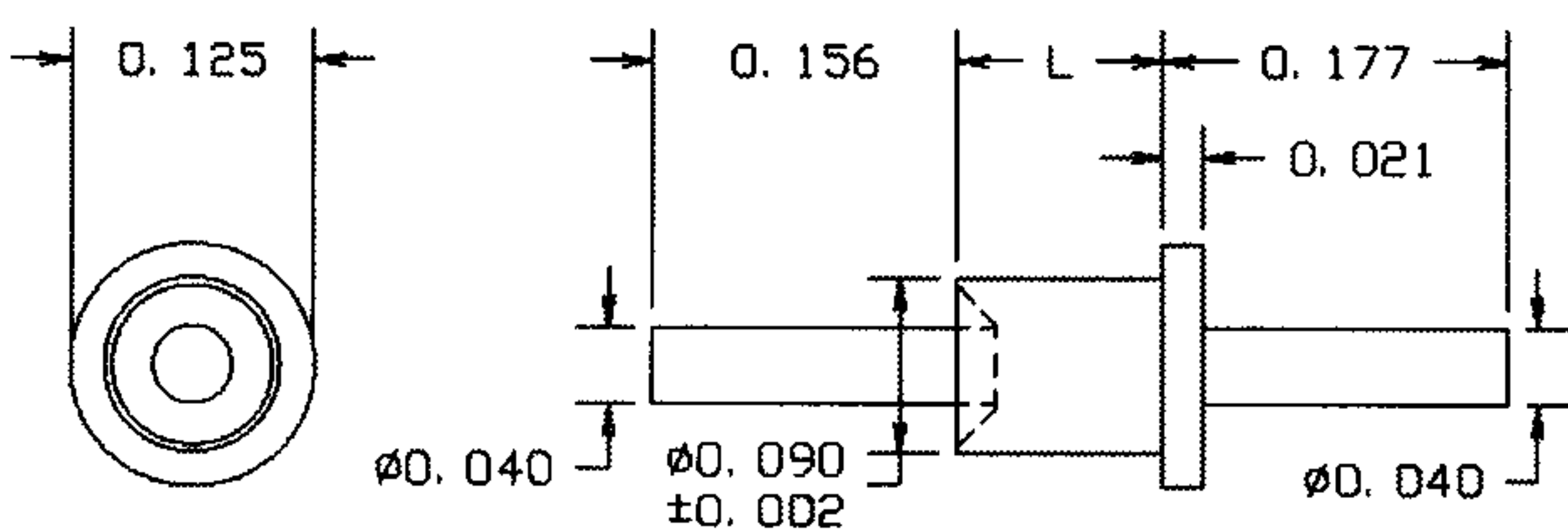
TOOLS

ANVIL	PUNCH
TA94-40-22	TP71-43

## 10-821-X-01 P.C. PIN .040, FEED THRU MATERIAL: BRASS

BASIC PART NO. FINISH

STANDARD FINISH: SILVER



RECOMMENDED MOUNTING HOLE .094 DIA. (3/32 DRILL)

PART NO.	L	BOARD THK.
10-821-1-01	.075	1/32
-2-01	.105	1/16
-3-01	.135	3/32
-4-01	.165	1/8

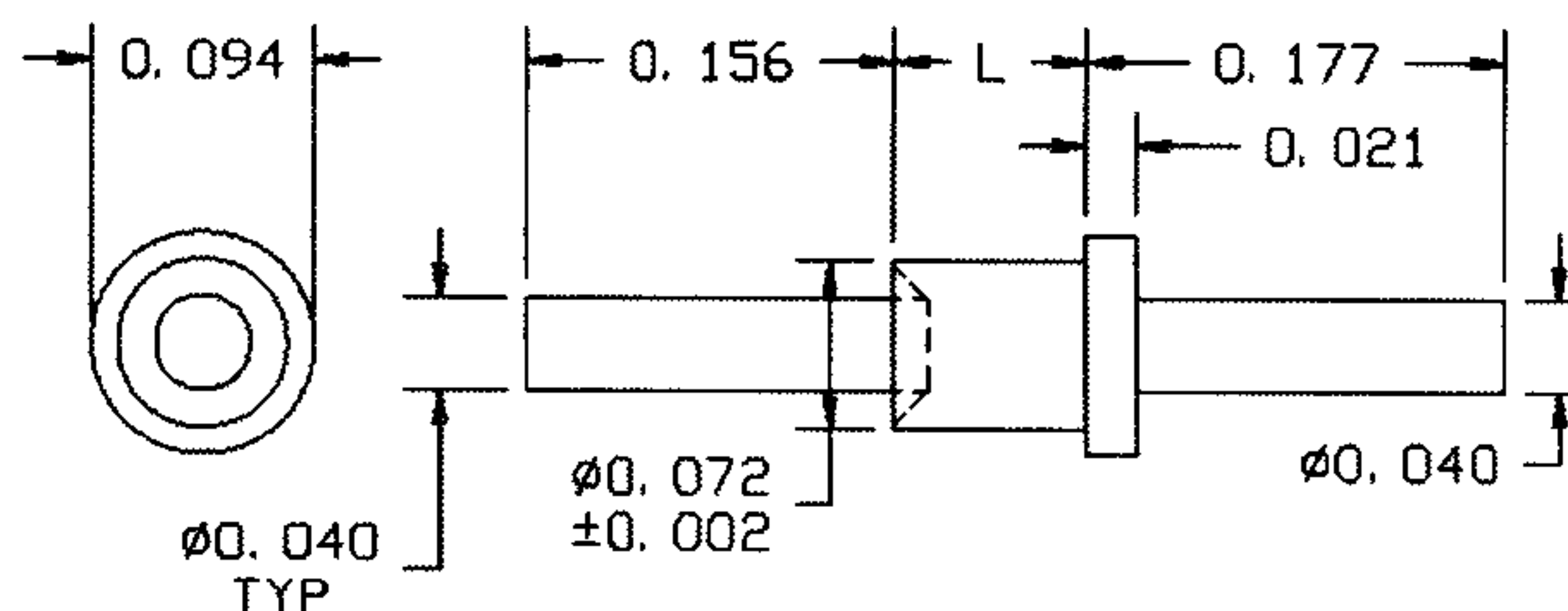
TOOLS

ANVIL	PUNCH
TA125-40-21	TP93-T40

## 13-878-X-05 .040 PIN MATERIAL: BRASS

BASIC PART NO. FINISH

STANDARD FINISH: ELECTRO-SOLDER



RECOMMENDED MOUNTING HOLE .076 DIA. (#48 DRILL)

PART NO.	L	BOARD THK.
13-878-1-05	.051	1/32
-2-05	.082	1/16
-3-05	.113	3/32

TOOLS

ANVIL	PUNCH
TA94-40-22	TP72-T40

