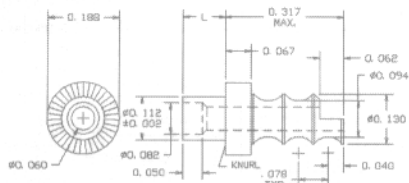


# TERMINALS

## 10-405-X-01

MATERIAL: BRASS  
FINISH: SILVER

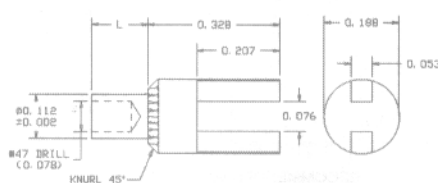


PART NO.	L	T	RECOMMENDED MOUNTING HOLE .116 DIA.(#32 DRILL)
10-405-1	.078	1/32	
10-405-2	.109	1/16	
10-405-3	.141	3/32	
10-405-4	.172	1/8	
10-405-6	.234	3/16	
10-405-8	.297	1/4	

TOOLS	
ANVIL	PUNCH
TA10-405	TP112-78

## 10-482-X-01

MATERIAL: BRASS  
FINISH: SILVER

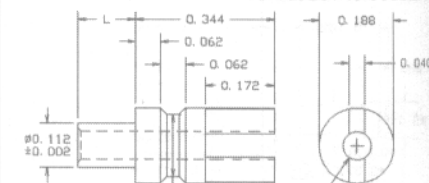


PART NO.	L	T	RECOMMENDED MOUNTING HOLE .116 DIA.(#32 DRILL)
10-482-1	.078	1/32	
10-482-2	.109	1/16	
10-482-3	.141	3/32	
10-482-4	.172	1/8	
10-482-5	.234	3/16	

TOOLS	
ANVIL	PUNCH
TA10-411	TP112-78

## 10-452-X-05

MATERIAL: BRASS  
FINISH: ELECTRO-SOLDER

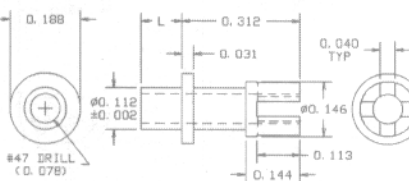


PART NO.	L	T	RECOMMENDED MOUNTING HOLE .116 DIA.(#32 DRILL)
10-452-3	.141	3/32	

TOOLS	
ANVIL	PUNCH
TA10-452	TP112-70

## 10-438-X-01

MATERIAL: BRASS  
FINISH: SILVER

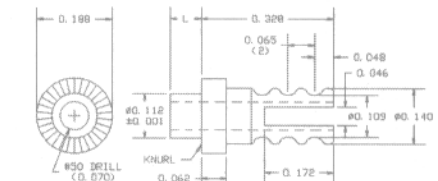


PART NO.	L	T	RECOMMENDED MOUNTING HOLE .116 DIA.(#32 DRILL)
10-438-1	.078	1/32	
10-438-2	.109	1/16	
10-438-3	.141	3/32	
10-438-4	.172	1/8	
10-438-6	.234	3/16	
10-438-8	.297	1/4	

TOOLS	
ANVIL	PUNCH
TA10-438	TP112-78

## 10-410-X-01

MATERIAL: BRASS  
FINISH: SILVER

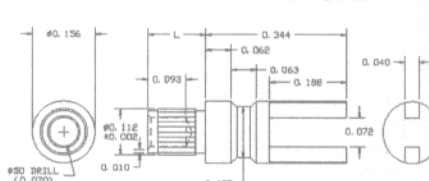


PART NO.	L	T	RECOMMENDED MOUNTING HOLE .116 DIA.(#32 DRILL)
10-410-1	.075	1/32	
10-410-2	.105	1/16	
10-410-3	.135	3/32	
10-410-4	.165	1/8	

TOOLS	
ANVIL	PUNCH
TA10-410	TP112-70

## 10-451-X-01

MATERIAL: BRASS  
FINISH: SILVER

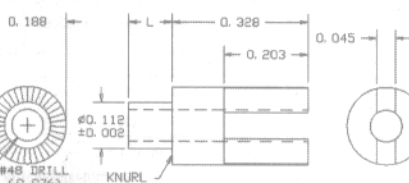


PART NO.	L	T	RECOMMENDED MOUNTING HOLE .116 DIA.(#32 DRILL)
10-451-2	.109	1/16	
10-451-3	.141	3/32	
10-451-4	.172	1/8	

TOOLS	
ANVIL	PUNCH
TA10-451	TP112-70

## 12-403-X-01

MATERIAL: BRASS  
FINISH: SILVER

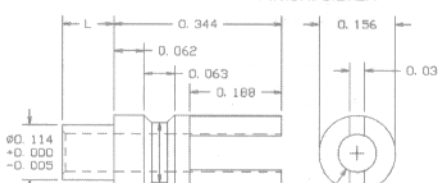


PART NO.	L	T	RECOMMENDED MOUNTING HOLE .116 DIA.(#32 DRILL)
12-403-1	.075	1/32	
12-403-2	.105	1/16	
12-403-3	.135	3/32	
12-403-4	.165	1/8	

TOOLS	
ANVIL	PUNCH
TA10-403	TP112-78

## 12-472-X-01

MATERIAL: BRASS  
FINISH: SILVER

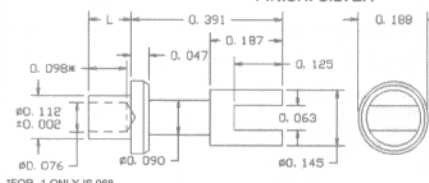


PART NO.	L	T	RECOMMENDED MOUNTING HOLE .116 DIA.(#32 DRILL)
12-472-2	.105	1/16	
12-472-3	.135	3/32	
12-472-4	.165	1/8	

TOOLS	
ANVIL	PUNCH
TA10-402	TP112-78

## 10-417-X-01

MATERIAL: BRASS  
FINISH: SILVER

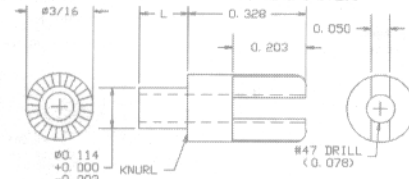


PART NO.	L	T	RECOMMENDED MOUNTING HOLE .116 DIA.(#32 DRILL)
10-417-1	.078	1/32	
10-417-2	.109	1/16	
10-417-3	.141	3/32	
10-417-4	.172	1/8	
10-417-6	.234	3/16	
10-417-8	.297	1/4	

TOOLS	
ANVIL	PUNCH
TA10-417	TP112-78

## 11-483-X-01

MATERIAL: BRASS  
FINISH: SILVER

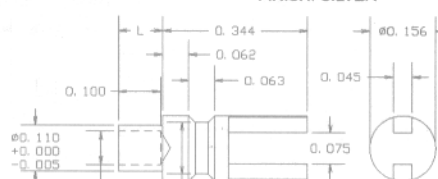


PART NO.	L	T	RECOMMENDED MOUNTING HOLE .116 DIA.(#32 DRILL)
11-483-1	.075	1/32	
11-483-2	.105	1/16	
11-483-3	.135	3/32	
11-483-4	.165	1/8	

TOOLS	
ANVIL	PUNCH
TA10-411	TP112-78

## 12-469-X-01

MATERIAL: BRASS  
FINISH: SILVER

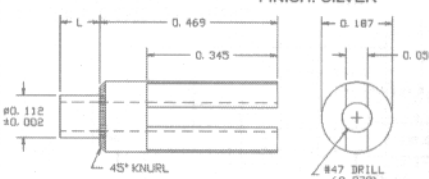


PART NO.	L	T	RECOMMENDED MOUNTING HOLE .116 DIA.(#32 DRILL)
12-469-2	.105	1/16	
12-469-3	.135	3/32	
12-469-4	.165	1/8	

TOOLS	
ANVIL	PUNCH
TA10-469	TP112-78

## 13-421-X-01

MATERIAL: BRASS  
FINISH: SILVER

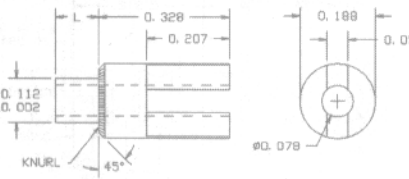


PART NO.	L	T	RECOMMENDED MOUNTING HOLE .116 DIA.(#32 DRILL)
13-421-1	.075	1/32	
13-421-2	.105	1/16	
13-421-3	.135	3/32	
13-421-4	.165	1/8	

TOOLS	
ANVIL	PUNCH
TA10-421	TP112-78

## 10-411-X-01

MATERIAL: BRASS  
FINISH: SILVER

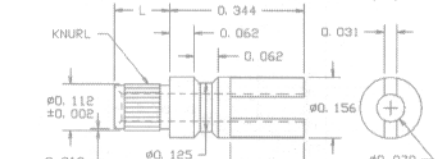


PART NO.	L	T	RECOMMENDED MOUNTING HOLE .116 DIA.(#32 DRILL)
10-411-1	.078	1/32	
10-411-2	.109	1/16	
10-411-3	.141	3/32	
10-411-4	.172	1/8	
10-411-6	.234	3/16	

TOOLS	
ANVIL	PUNCH
TA10-411	TP112-78

## 10-402-X-XX

MATERIAL: BRASS  
FINISH: SILVER (01)  
FINISH: GOLD (03)

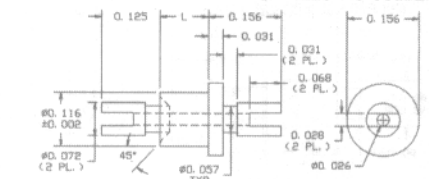


PART NO.	L	T	RECOMMENDED MOUNTING HOLE .116 DIA.(#32 DRILL)
10-402-2	.109	1/16	
10-402-3	.141	3/32	
10-402-4	.172	1/8	

TOOLS	
ANVIL	PUNCH
TA10-402	TP112-70

## 10-492-X-05

MATERIAL: BRASS  
FINISH: ELECTRO-SOLDER



PART NO.	L	T	RECOMMENDED MOUNTING HOLE .120 DIA.(#31 DRILL)
10-492-1	.075	1/32	
10-492-2	.105	1/16	
10-492-3	.135	3/32	
10-492-4	.165	1/8	

TOOLS	
ANVIL	PUNCH
TA10-492	TP116-T72

FOR ADDITIONAL SIZES AND MATERIALS, CONTACT FACTORY

