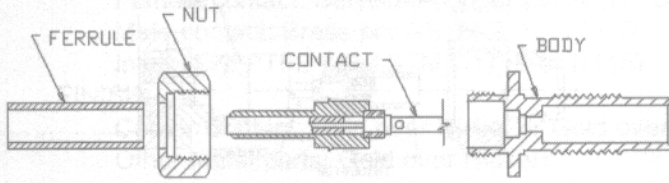


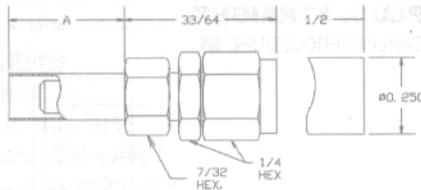
SMB, SMC, SLIDE-ON SERIES

CRIMP, FLEXIBLE CABLE

Our crimp cable termination is designed for lowest cost to the user due to higher assembly production rates and low initial cost. The connector is not field serviceable, but the rear assembly can be replaced if the user desires. The cable braid is crimped to a removable barrel with a standard crimp tool. The barrel is assembled to the connector with a rear nut.

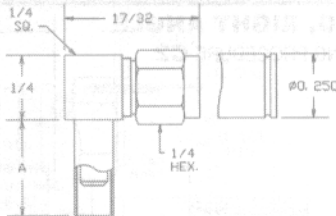


PLUG, STRAIGHT, CABLING PROCEDURE F



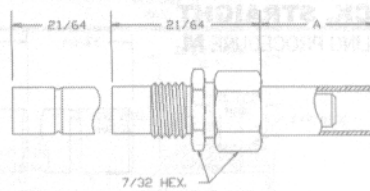
SERIES	PART NO.	A	CABLE
SMB	800-1500-03	.31	RG178, 196, 404
SMC	800-1501-03	.31	RG178, 196, 404
Slide-On	800-1502-03	.31	RG178, 196, 404
SMB	800-1003-03	.38	RG188, 316, 187, 174, 179
SMC	800-1002-03	.38	RG188, 316, 187, 174, 179
Slide-On	800-1503-03	.38	RG188, 316, 187, 174, 179

PLUG, RIGHT ANGLE CABLING PROCEDURE H



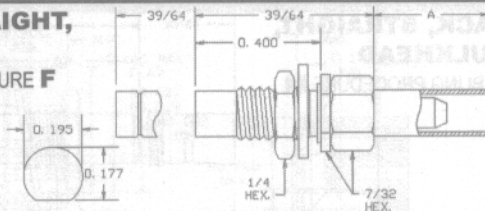
SERIES	PART NO.	A	CABLE
SMB	800-1504-03	.31	RG178, 196, 404
SMC	800-1505-03	.31	RG178, 196, 404
Slide-On	800-1506-03	.31	RG178, 196, 404
SMB	800-1007-03	.38	RG188, 316, 187, 174, 179
SMC	800-1006-03	.38	RG188, 316, 187, 174, 179
Slide-On	800-1507-03	.38	RG188, 316, 187, 174, 179

JACK, STRAIGHT, CABLING PROCEDURE F



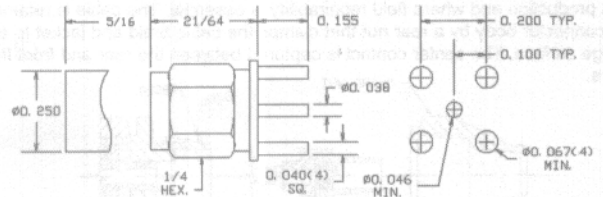
SERIES	PART NO.	A	CABLE
SMB	800-1508-03	.31	RG178, 196, 404
SMC	800-1509-03	.31	RG178, 196, 404
Slide-On	800-1510-03	.31	RG178, 196, 404
SMB	800-1511-03	.38	RG188, 316, 187, 174, 179
SMC	800-1512-03	.38	RG188, 316, 187, 174, 179
Slide-On	800-1513-03	.38	RG188, 316, 187, 174, 179

JACK, STRAIGHT, BULKHEAD CABLING PROCEDURE F



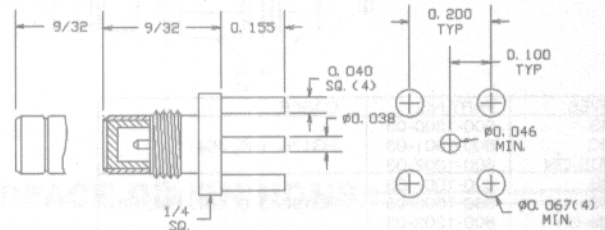
SERIES	PART NO.	A	CABLE
SMB	800-1514-03	.31	RG178, 196, 404
SMC	800-1515-03	.31	RG178, 196, 404
Slide-On	800-1516-03	.31	RG178, 196, 404
SMB	800-1011-03	.38	RG188, 316, 187, 174, 179
SMC	800-1010-03	.38	RG188, 316, 187, 174, 179
Slide-On	800-1517-03	.38	RG188, 316, 187, 174, 179

RECEPTACLES, PRINTED CIRCUIT PLUG, STRAIGHT



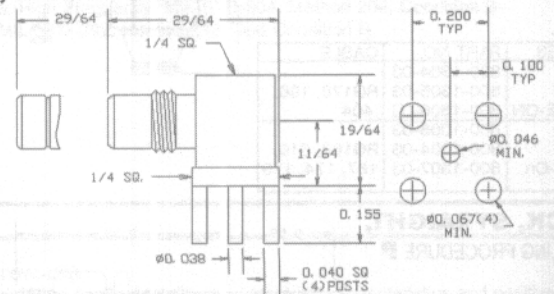
SERIES	PART NO.
SMB	800-1550-03
SMC	800-1551-03
Slide-On	800-1552-03

JACK, STRAIGHT



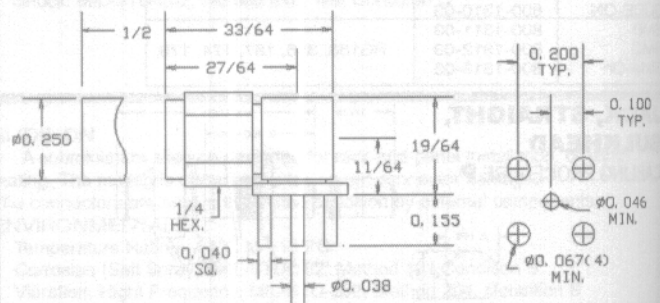
SERIES	PART NO.
SMB	800-1019-03
SMC	800-1018-03
Slide-On	800-1553-03

JACK, RIGHT ANGLE



SERIES	PART NO.
SMB	800-1021-03
SMC	800-1022-03
Slide-On	800-1554-03

PLUG, RIGHT ANGLE



SERIES	PART NO.
SMB	800-1555-03
SMC	800-1556-03
Slide-On	800-1557-03