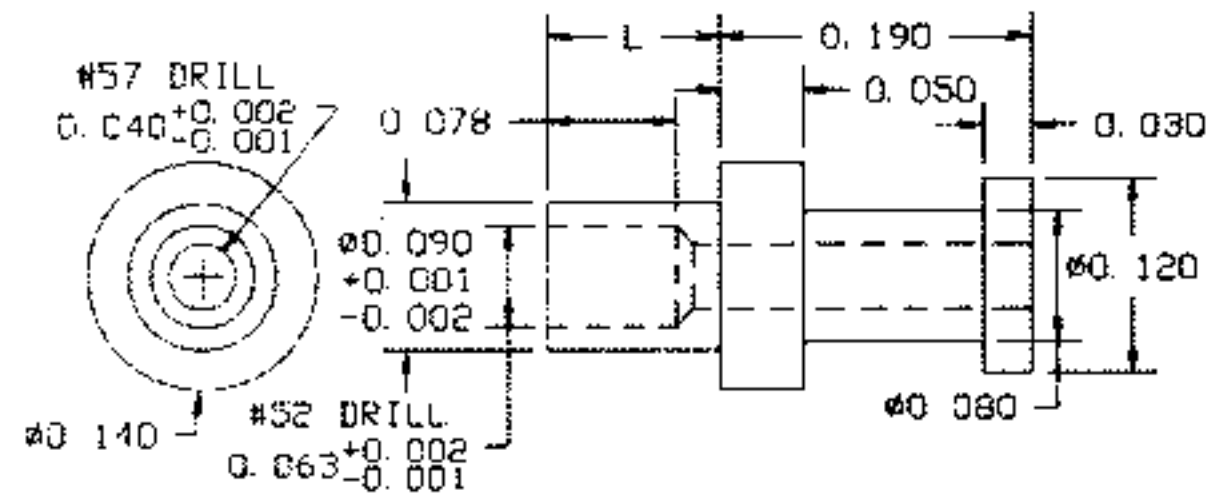


# TERMINALS

## 11-320-X-01

MATERIAL: BRASS  
FINISH: SILVER

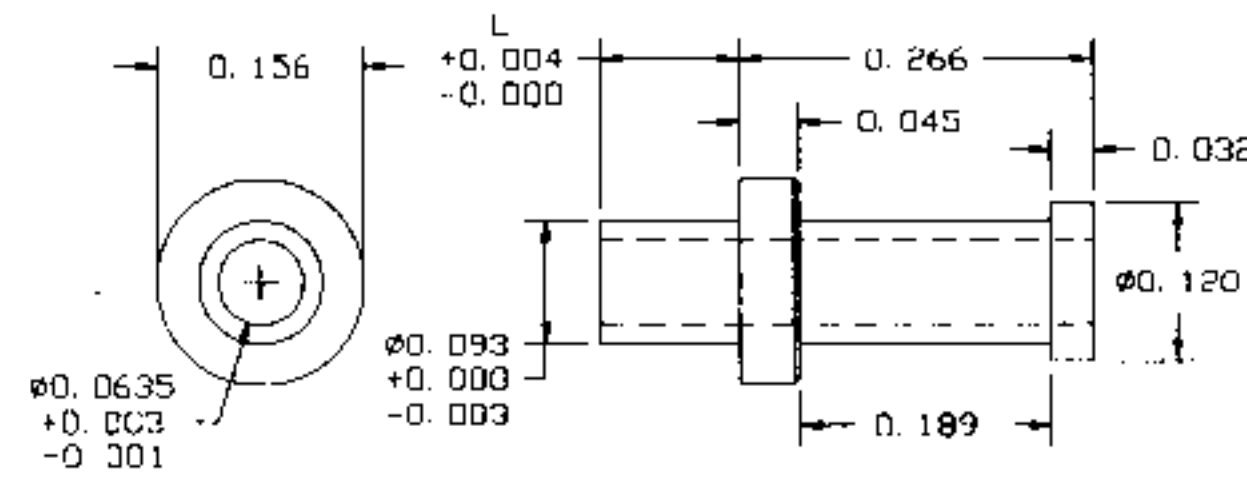


RECOMMENDED MOUNTING HOLE .094 DIA. (#3/32 DRILL)

PART NO.	L	T	TOOLS	
11-320-1	.075	1/32	ANVIL	PUNCH
11-320-2	.105	1/16	TA140-120-50	TP90-64
11-320-3	.135	3/32		
11-320-4	.165	1/8		

## 11-307-X-01

MATERIAL: BRASS  
FINISH: SILVER

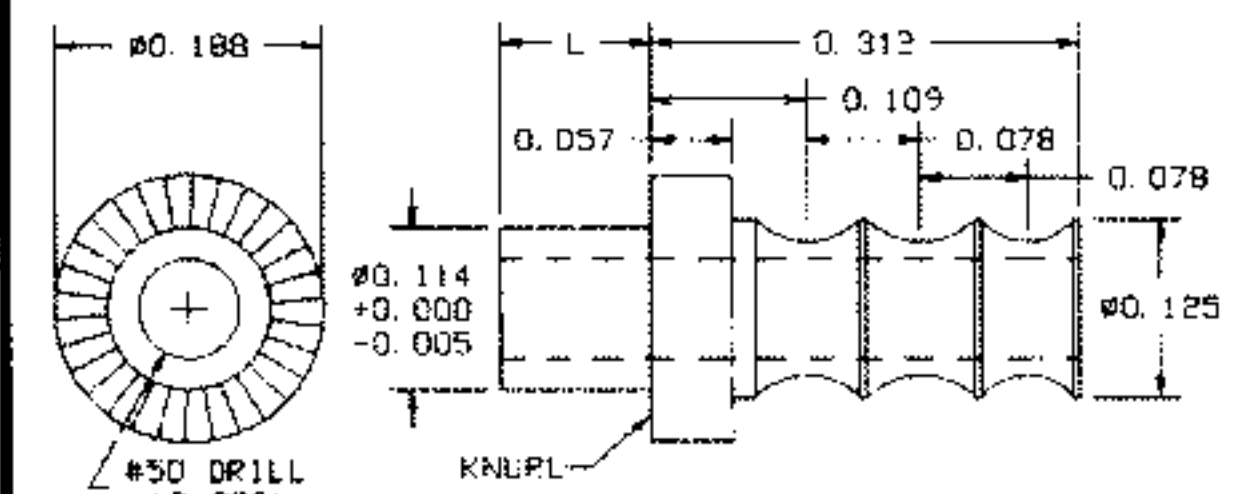


RECOMMENDED MOUNTING HOLE .096 DIA. (#41 DRILL)

PART NO.	L	T	TOOLS	
11-307-1	.075	1/32	ANVIL	PUNCH
11-307-2	.105	1/16	TA156-120-40	TP90-64
11-307-3	.135	3/32		
11-307-4	.165	1/8		

## 12-317-X-01

MATERIAL: BRASS  
FINISH: SILVER

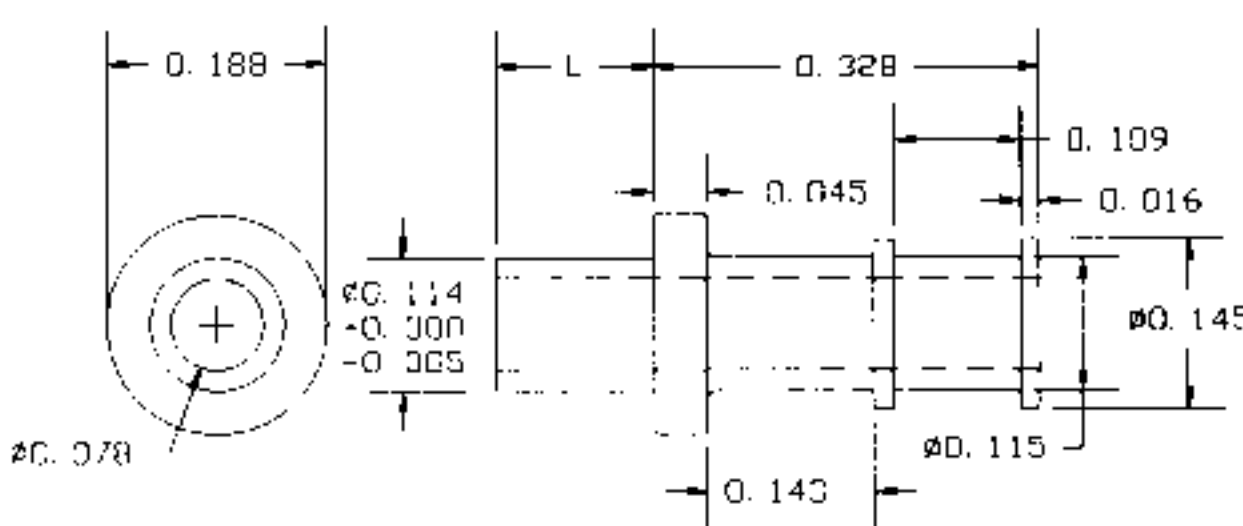


RECOMMENDED MOUNTING HOLE .116 DIA. (#32 DRILL)

PART NO.	L	T	TOOLS	
12-317-1	.075	1/32	ANVIL	PUNCH
12-317-2	.105	1/16	TA188-126-55	TP112-70
12-317-3	.135	3/32		
12-317-4	.165	1/8		

## 12-303-X-01

MATERIAL: BRASS  
FINISH: SILVER

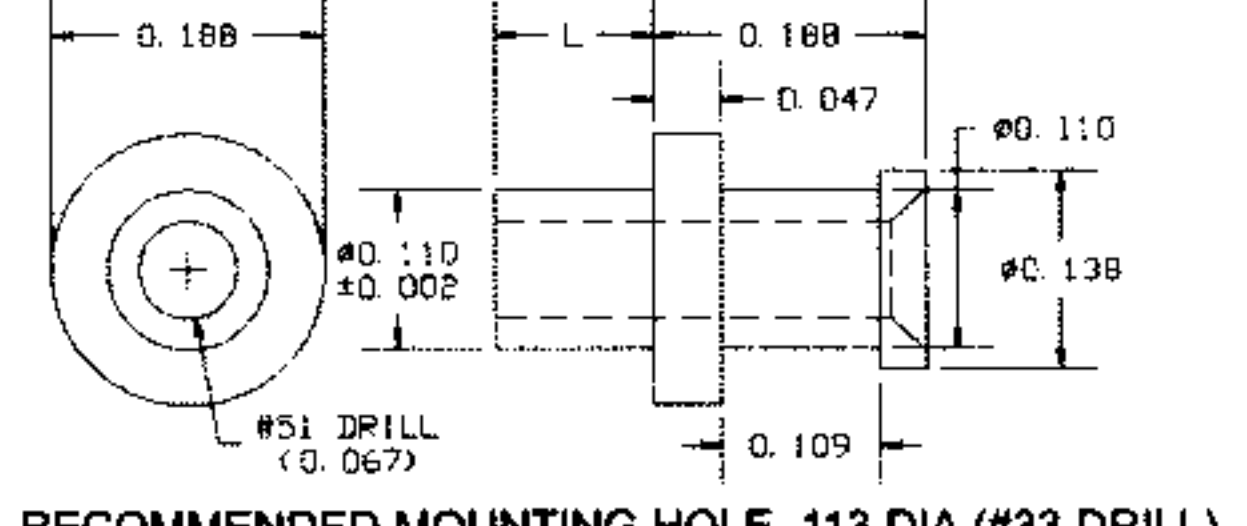


RECOMMENDED MOUNTING HOLE .116 DIA. (#32 DRILL)

PART NO.	L	T	TOOLS	
12-303-1	.075	1/32	ANVIL	PUNCH
12-303-2	.105	1/16	TA188-146-31	TP112-78
12-303-3	.135	3/32		
12-303-4	.165	1/8		

## 10-305-X-01

MATERIAL: BRASS  
FINISH: SILVER

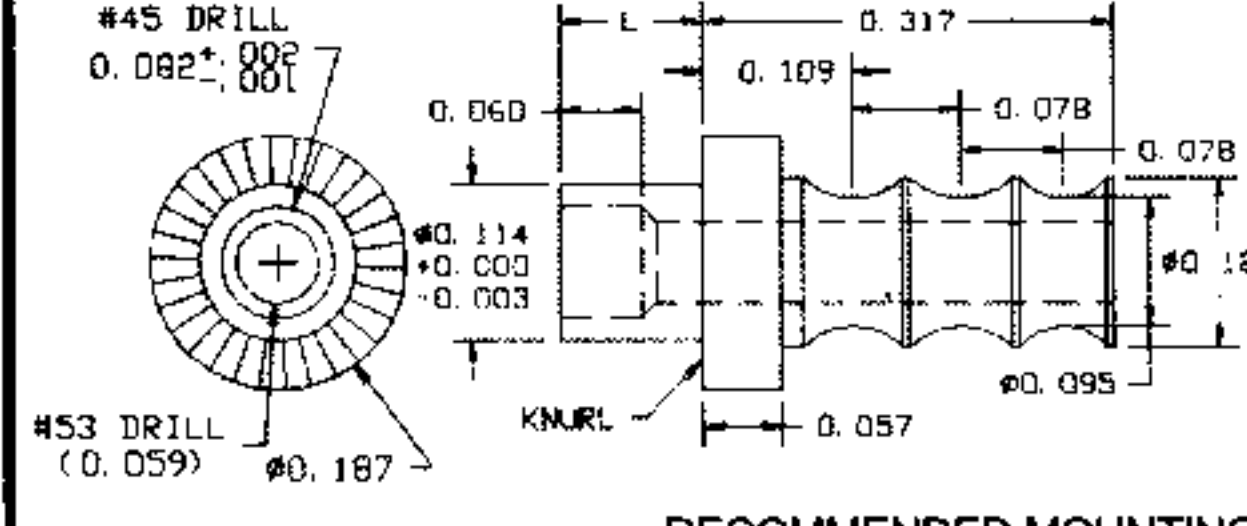


RECOMMENDED MOUNTING HOLE .113 DIA. (#33 DRILL)

PART NO.	L	T	TOOLS	
10-305-1	.078	1/32	ANVIL	PUNCH
10-305-2	.109	1/16	TA188-142-47	TP112-70
10-305-3	.141	3/32		
10-305-4	.172	1/8		

## 11-309-X-01

MATERIAL: BRASS  
FINISH: SILVER

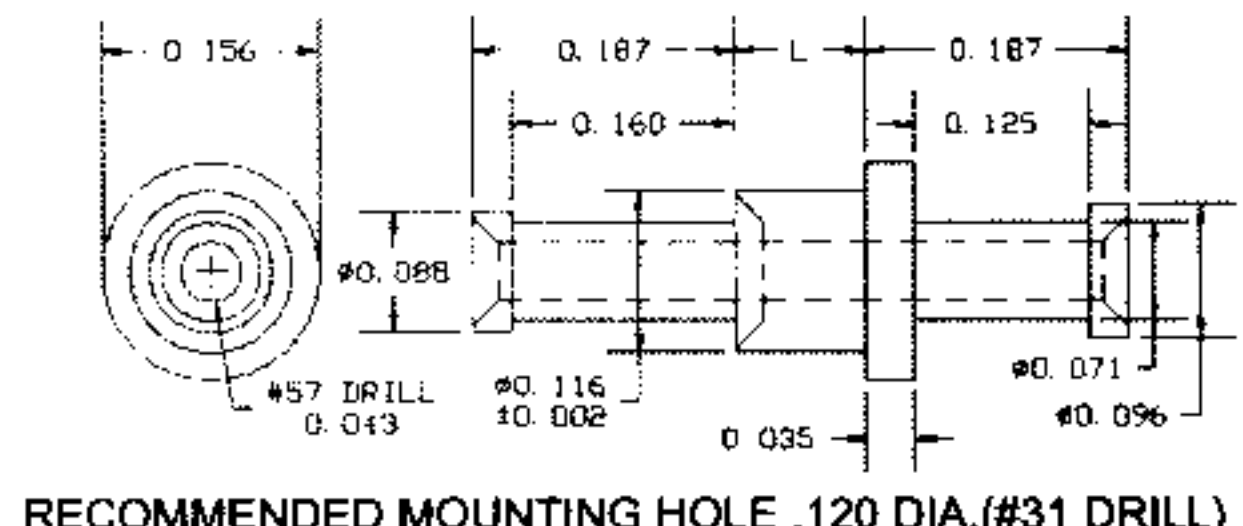


RECOMMENDED MOUNTING HOLE .116 DIA. (#32 DRILL)

PART NO.	L	T	TOOLS	
11-309-1	.075	1/32	ANVIL	PUNCH
11-309-2	.105	1/16	TA188-126-55	TP112-78
11-309-3	.135	3/32		
11-309-4	.165	1/8		
11-309-5	.195	5/32		
11-309-6	.230	3/16		

## 10-321-X-01

MATERIAL: BRASS  
FINISH: SILVER

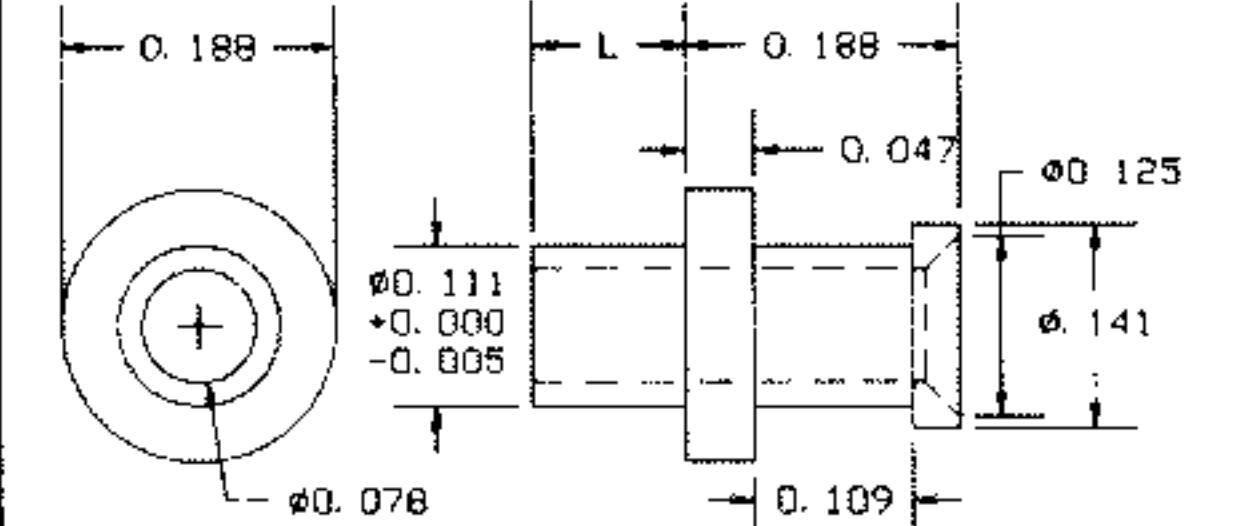


RECOMMENDED MOUNTING HOLE .120 DIA. (#31 DRILL)

PART NO.	L	T	TOOLS	
10-321-1	.062	1/32	ANVIL	PUNCH
10-321-2	.094	1/16	TA156-96-35	TP116-T88
10-321-3	.125	3/32		
10-321-4	.156	1/8		

## 12-306-X-01

MATERIAL: BRASS  
FINISH: SILVER

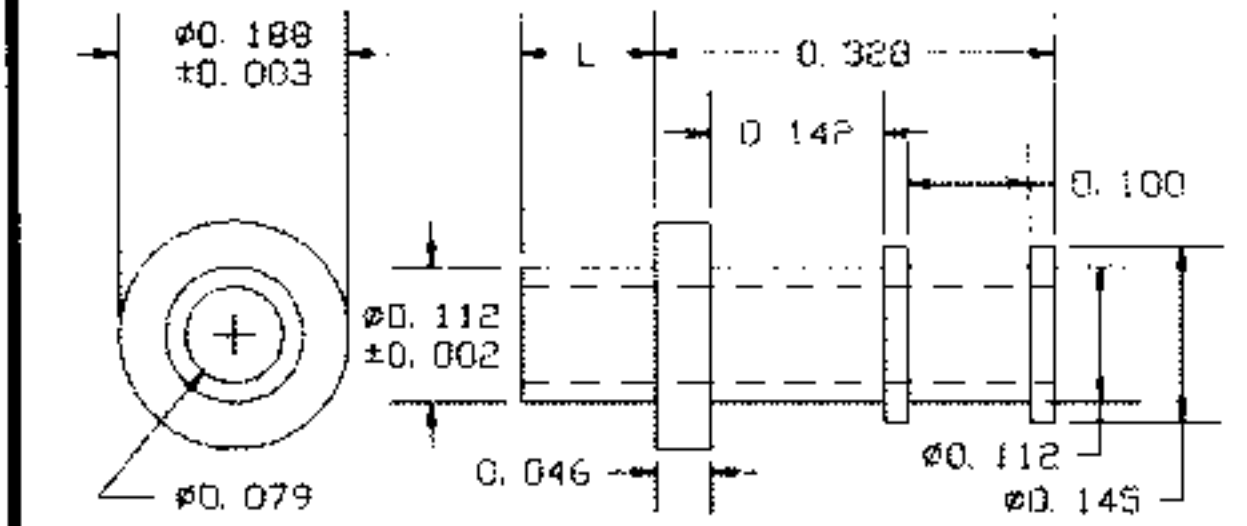


RECOMMENDED MOUNTING HOLE .116 DIA. (#32 DRILL)

PART NO.	L	T	TOOLS	
12-306-1	.075	1/32	ANVIL	PUNCH
12-306-2	.105	1/16	TA188-142-47	TP112-78
12-306-3	.135	3/32		
12-306-4	.165	1/8		

## 10-349-X-05

MATERIAL: BRASS  
FINISH: ELECTRO-SOLDER

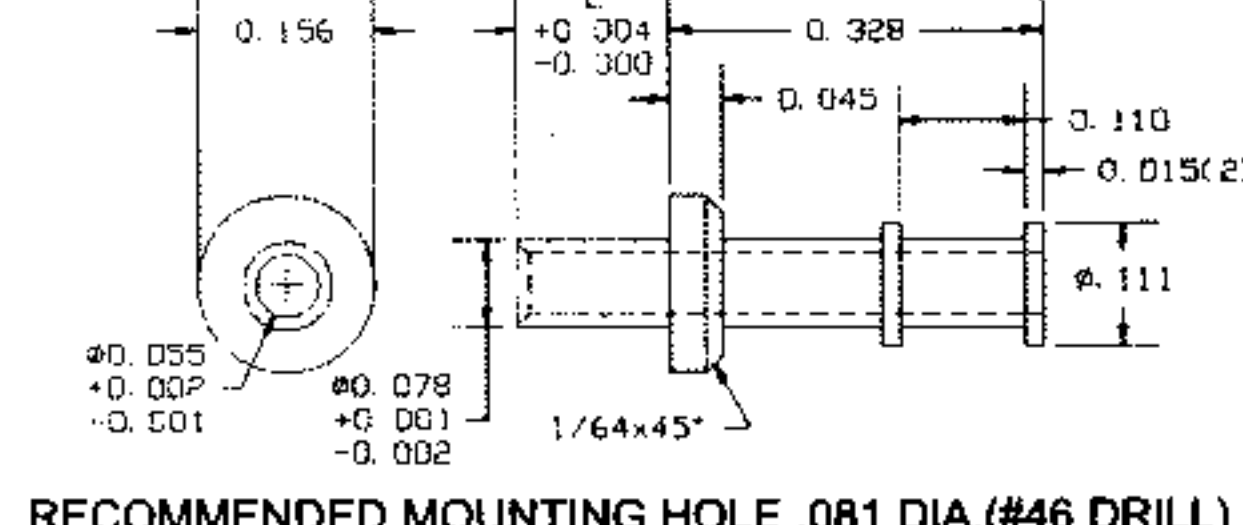


RECOMMENDED MOUNTING HOLE .116 DIA. (#32 DRILL)

PART NO.	L	T	TOOLS	
10-349-2	.109	1/16	ANVIL	PUNCH
10-349-3	.141	3/32	TA188-146-31	TP112-78
10-349-4	.172	1/8		

## 11-313-X-01

MATERIAL: BRASS  
FINISH: SILVER

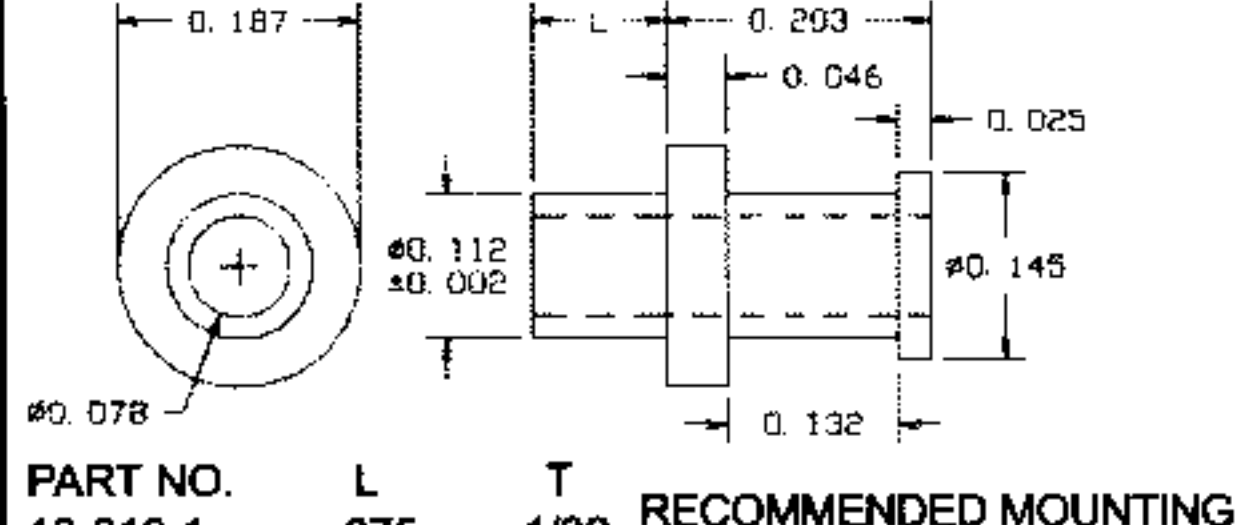


RECOMMENDED MOUNTING HOLE .081 DIA. (#46 DRILL)

PART NO.	L	T	TOOLS	
11-313-1	.075	1/32	ANVIL	PUNCH
11-313-2	.105	1/16	TA156-111-45	TP78-55
11-313-3	.135	3/32		
11-313-4	.165	1/8		

## 13-310-X-01

MATERIAL: BRASS  
FINISH: SILVER

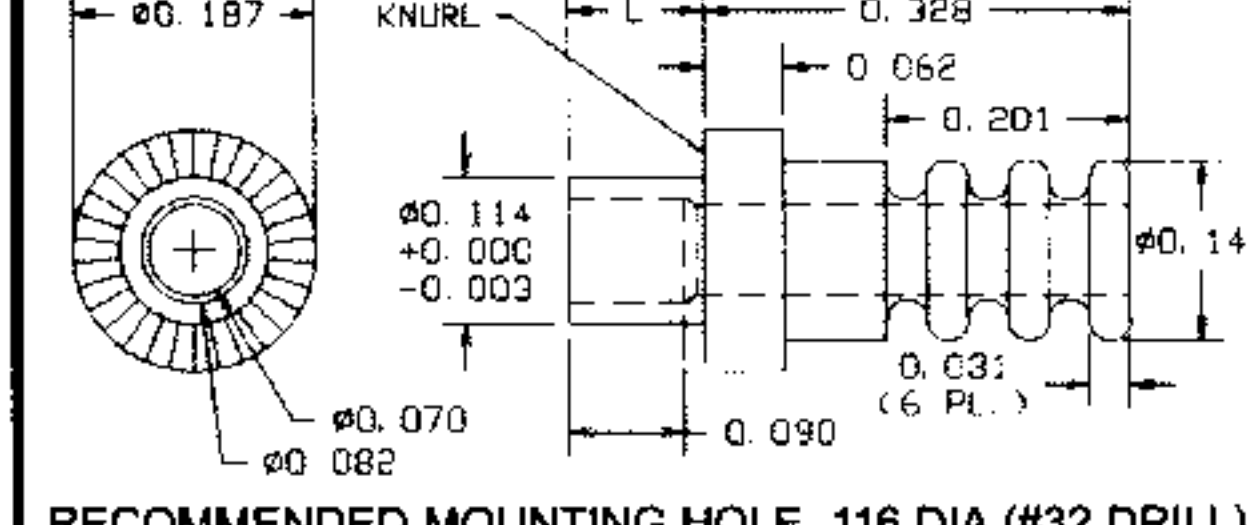


RECOMMENDED MOUNTING HOLE .116 DIA. (#32 DRILL)

PART NO.	L	T	TOOLS	
13-310-1	.075	1/32	ANVIL	PUNCH
13-310-2	.105	1/16	TA188-146-31	TP112-78
13-310-3	.135	3/32		
13-310-4	.165	1/8		
13-310-5	.195	5/32		
13-310-6	.230	3/16		

## 11-318-X-01

MATERIAL: BRASS  
FINISH: SILVER

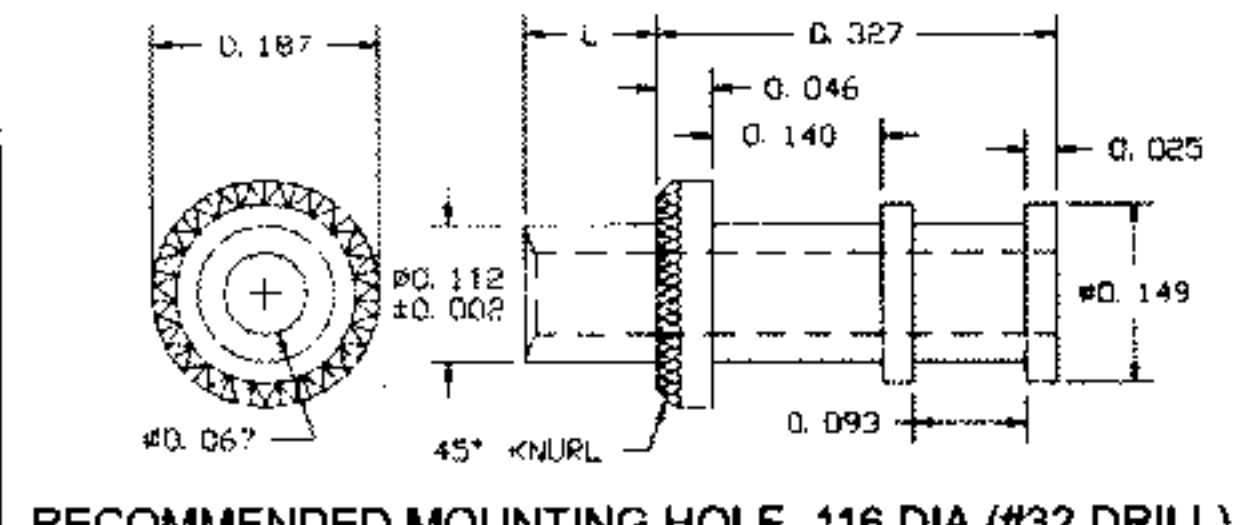


RECOMMENDED MOUNTING HOLE .116 DIA. (#32 DRILL)

PART NO.	L	T	TOOLS	
11-318-1	.075	1/32	ANVIL	PUNCH
11-318-3	.105	1/16	TA188-141-60	TP112-78
11-318-3	.135	3/32		
11-318-4	.165	1/8		

## 14-345-X-05

MATERIAL: RED LEADED BRASS  
FINISH: ELECTRO-SOLDER

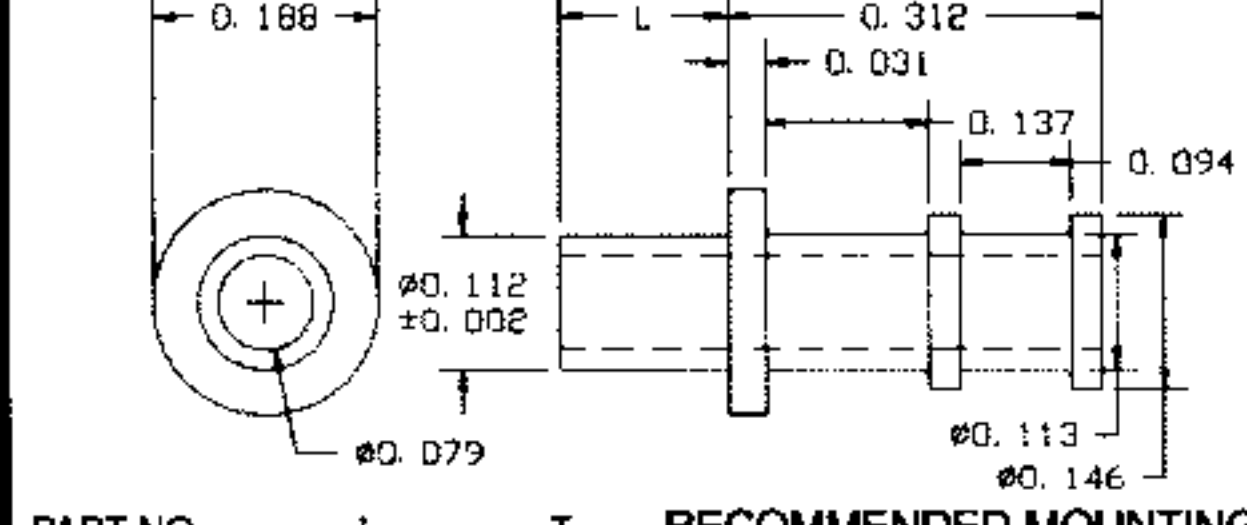


RECOMMENDED MOUNTING HOLE .116 DIA. (#32 DRILL)

PART NO.	L	T	TOOLS	
14-345-2	.109	1/16	ANVIL	PUNCH
14-345-3	.135	3/32	TA188-149-31	TP112-70
14-345-4	.172	1/8		
14-345-5	.195	5/32		

## 10-311-X-01

MATERIAL: BRASS  
FINISH: SILVER

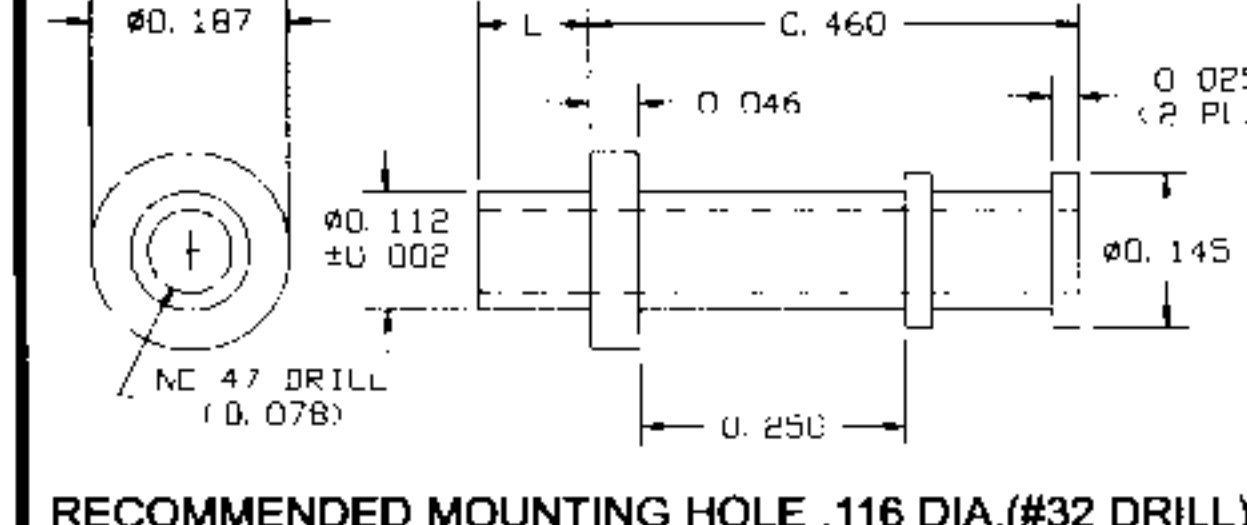


RECOMMENDED MOUNTING HOLE .116 DIA. (#32 DRILL)

PART NO.	L	T	TOOLS	
10-311-1	.078	1/32	ANVIL	PUNCH
10-311-2	.109	1/16	TA188-146-31	TP112-78
10-311-3	.141	3/32		
10-311-4	.172	1/8		
10-311-6	.234	3/16		
10-311-8	.297	1/4		

## 13-316-X-01

MATERIAL: BRASS  
FINISH: SILVER



RECOMMENDED MOUNTING HOLE .116 DIA. (#32 DRILL)

PART NO.	L	T	TOOLS	
13-316-1	.075	1/32	ANVIL	PUNCH
13-316-2	.105	1/16	TA188-146-31	TP112-78
13-316-3	.135	3/32		
13-316-4	.165	1/8		

FOR ADDITIONAL SIZES AND MATERIALS, CONTACT FACTORY

