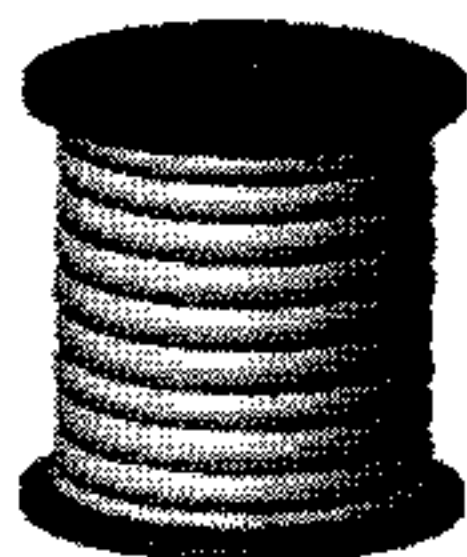


HARDWARE

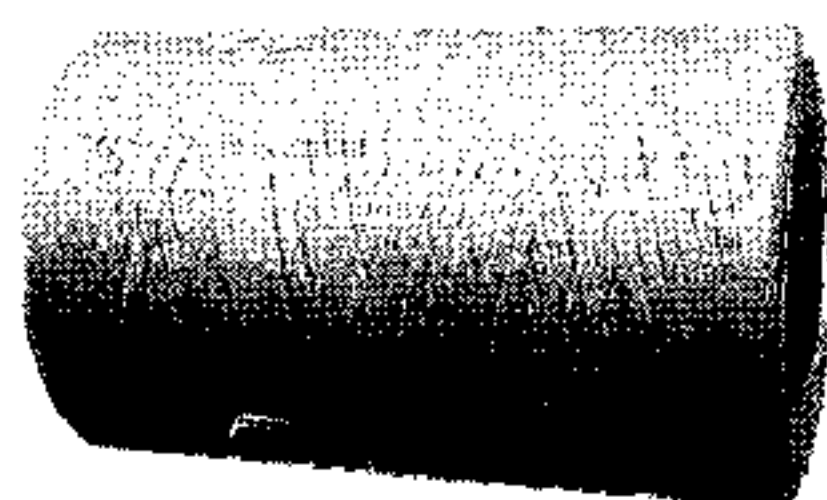
PTFE TUBING



Meets and exceeds MIL-1-22129B, AMS-3655, or 3654, CS252-63. For slip on insulation. Provides greater reliability and resistance to high temperatures. Shrink-back is virtually eliminated. Individually packed.
SPECIFY COLOR
 If no color is specified, Natural PTFE will be supplied

STANDARDWALL					LIGHTWEIGHT					THINWALL				
PART NO.	AWG Wire Size	Nom. I.D.	Nom. Wall Thk.	Std. Pkg.Ft.	PART NO.	AWG Wire Size	Nom. I.D.	Nom. Wall Thk.	Std. Pkg. Ft.	PART NO.	AWG Wire Size	Nom. I.D.	Nom. Wall Thk.	Std. Pkg. Ft.
770-9901	24	.022	.012	100	770-9965	28	.015	.006	100	770-9930	30	.012	.009	100
770-9902	22	.027	.012	100	770-9966	26	.018	.006	100	770-9931	28	.015	.009	100
770-9903	20	.034	.016	100	770-9967	24	.022	.006	100	770-9932	26	.018	.009	100
770-9904	19	.038	.016	100	770-9968	22	.027	.006	100	770-9933	24	.022	.010	100
770-9905	18	.042	.016	100	770-9969	20	.034	.006	100	770-9934	22	.027	.010	100
770-9906	17	.047	.016	100	770-9970	19	.038	.006	100	770-9935	20	.034	.012	100
770-9907	16	.053	.016	100	770-9971	18	.042	.006	100	770-9936	19	.038	.012	100
770-9908	15	.059	.016	100	770-9972	17	.047	.006	100	770-9937	18	.042	.012	100
770-9909	14	.066	.016	100	770-9973	16	.053	.006	100	770-9938	17	.047	.012	100
770-9910	13	.076	.016	100	770-9974	15	.059	.006	100	770-9939	16	.053	.012	100
770-9911	12	.085	.016	100	770-9975	14	.066	.008	100	770-9940	15	.059	.012	100
770-9912	11	.095	.016	100	770-9976	13	.076	.008	100	770-9941	14	.066	.012	100
770-9913	10	.106	.016	100	770-9977	12	.085	.008	100	770-9942	13	.076	.012	100
770-9914	9	.118	.020	100	770-9978	11	.095	.008	100	770-9943	12	.085	.012	100
770-9915	1/8	.125	.020	100	770-9979	10	.106	.008	100	770-9944	11	.095	.012	100
770-9916	8	.133	.020	100	770-9981	9	.118	.008	100	770-9945	10	.106	.012	100
770-9917	7	.148	.020	100	770-9983	8	.133	.008	100	770-9946	9	.118	.015	100
770-9918	6	.166	.020	100	770-9984	7	.148	.008	100	770-9948	8	.133	.015	100
770-9919	5	.186	.020	100	770-9985	6	.166	.010	100	770-9949	7	.148	.015	100
770-9920	4	.208	.020	100	770-9986	5	.186	.010	100	770-9950	6	.166	.015	100
770-9921	3	.234	.020	100	770-9987	4	.208	.010	100	770-9951	5	.186	.015	100
770-9922	1/4	.250	.020	100	770-9988	3	.234	.010	100	770-9952	4	.208	.015	100
770-9923	2	.263	.020	100	770-9990	2	.263	.010	100	770-9953	3	.234	.015	100
770-9924	1	.294	.020	100	770-9991	1	.294	.010	100	770-9955	2	.263	.015	100
770-9925	5/16	.312	.020	100	770-9993	0	.330	.012	100	770-9956	1	.294	.015	100
770-9926	0	.330	.020	100						770-9958	0	.330	.015	100

LACING CORD AND TAPE



ROUND NYLON CORD
MEETS MIL-T-713, TYPE P
MW FINISH, SUPPLIED 1/2 LB. SPOOLS

Part No.	Class	Dia.	Test	Yds/Lb.	Color
770-8001	1	.050	70	560	Natural
770-8004	1	.050	70	560	Blk
770-8002	2	.035	48	750	Natural
770-8005	2	.035	48	750	Blk
770-8003	3	.030	32	1180	Natural
770-8006	3	.030	32	1180	Blk

ROUND LINEN CORD
Meets MIL-T-713 TY N

Part No.	Class	Ply	Yds	Color
770-8044	1	12	300	Natural
770-8042	2	8	470	Natural
770-8041	3	6	600	Natural
770-8040	-	4	850	Natural
770-8043	-	9	400	Natural

FLAT NYLON TAPE
MEETS MIL-T-43435 TYPE 1
POLYAMIDE NYLON B FINISH

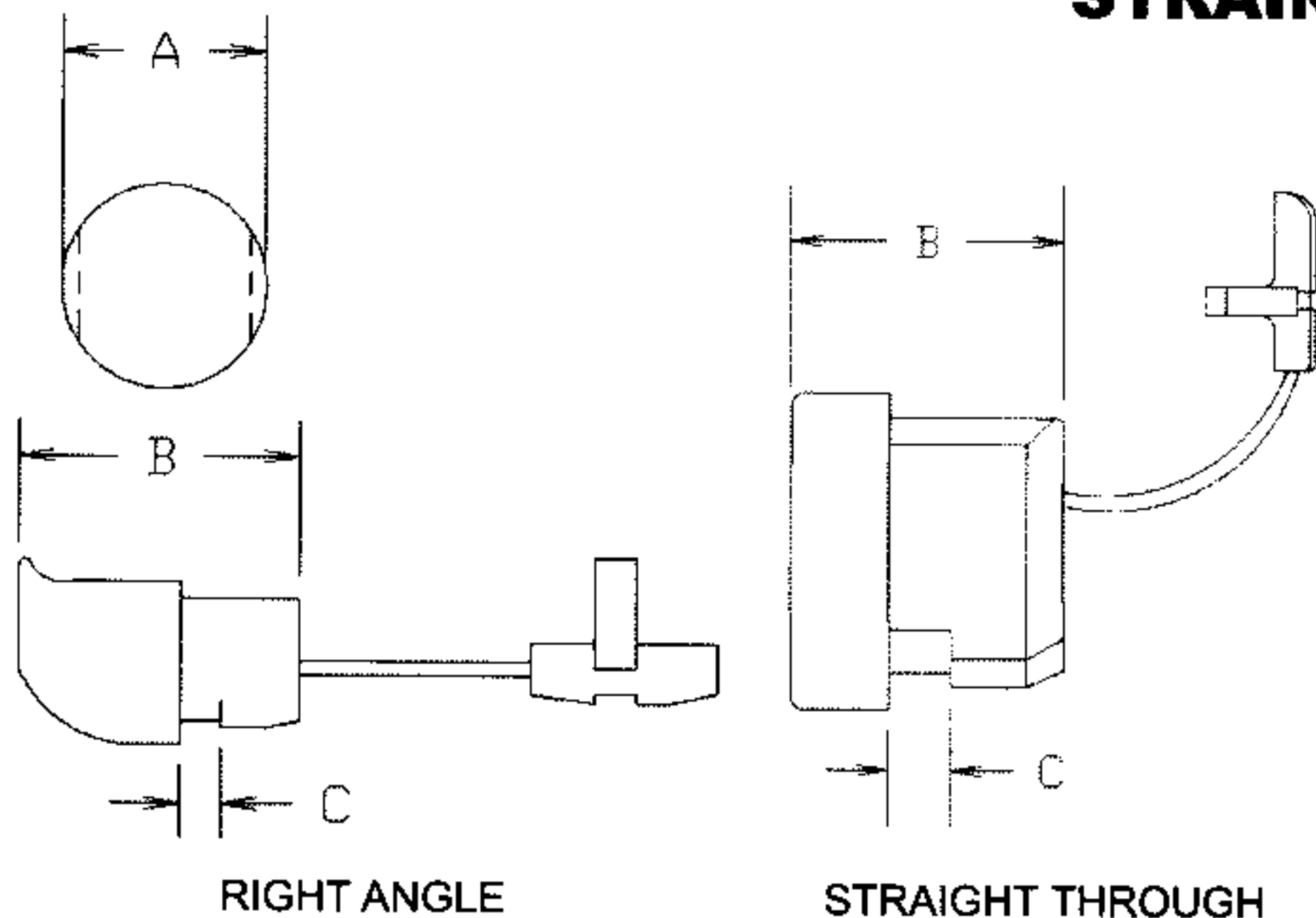
Part No.	Size	Width	Thk.	Test	Yds./Spool	Color
770-8010	1	.225	.014	135	250	Natural
770-8020	1	.225	.014	135	250	Blk
770-8011	2	.125	.013	80	250	Natural
770-8021	2	.125	.013	80	250	Blk
770-8012	4	.062	.012	25	500	Natural
770-8022	3	.090	.012	50	500	Blk
770-8013	3	.090	.012	50	500	Natural
770-8023	4	.062	.012	25	500	Blk
770-8014	5	.048	.008	15	500	Natural
770-8024	5	.048	.008	15	500	Blk

FLAT-DACRON TAPE
Meets MIL-T-43435, Type 2
Polyester (Dacron) B Finish

Part No.	Size	Width	Thk.	Test	Yds.	Color
770-8030	1	.225	.014	135	500	Natural
770-8033	1	.225	.014	135	500	Blk.
770-8031	2	.090	.014	50	500	Natural
770-8034	2	.090	.014	50	500	Blk
770-8032	4	.062	.010	25	500	Natural
770-8035	4	.062	.010	25	500	Blk

500 Yds per Spool

STRAIN RELIEFS



STRAIN RELIEFS

Absorbs pull and twist. Wire fully anchored and insulated in chassis.
 Straight through and right angle types. UL Listed
 A= Chassis Hole, B= Length, C= Max. Chassis Thickness

STRAIGHT THROUGH

PART NO.	WIRE TYPE	APPROX. WIRE SIZE	A	B	C
770-4021	AWM	1/8 - 3/16	.375	.410	.060
770-4022	SP-1, SPT-1	.12 x .22	.437	.410	.062
770-4023	SV, SVT, HPD	.250 - .290	.500	.438	.100
770-4024	SPT-1, SPT-2, SP-2, HPN	.12 x .30	.500	.406	.062
770-4025	SL, SJT, SJO	.325 - .360	.625	.580	.062

RIGHT ANGLE

PART NO.	WIRE TYPE	APPROX. WIRE SIZE	A	B	C
770-4026	SPT-1, SPT-2, SP-2, HPN	.12 x .30	.500	.687	.100
770-4027	SV, SVT, HPD	.250 - .290	.500	.687	.100
770-4028	S, ST	.360 - .430	.750	1.085	.125

