

1079-3

REVISIONS	
ISSUE	CHANGES
0	ER 3883 CC 2 AUG 71
1	FORMAT CN 10463A CC 27 JAN 72
2	CN 13662 JL 30 JUL 74
3	CN 14155 A JL 27 JAN 75
4	CN 15041A MJB 24 NOV 75
5	CN 20602 C GUG 2 MAY 80
6	CN 28182 C JL 30 JUL 74
7	CN 29535 C EAT 22 DEC 87

S-D

REF:

FINISH

SPEC. KER 1000 A

MATL.

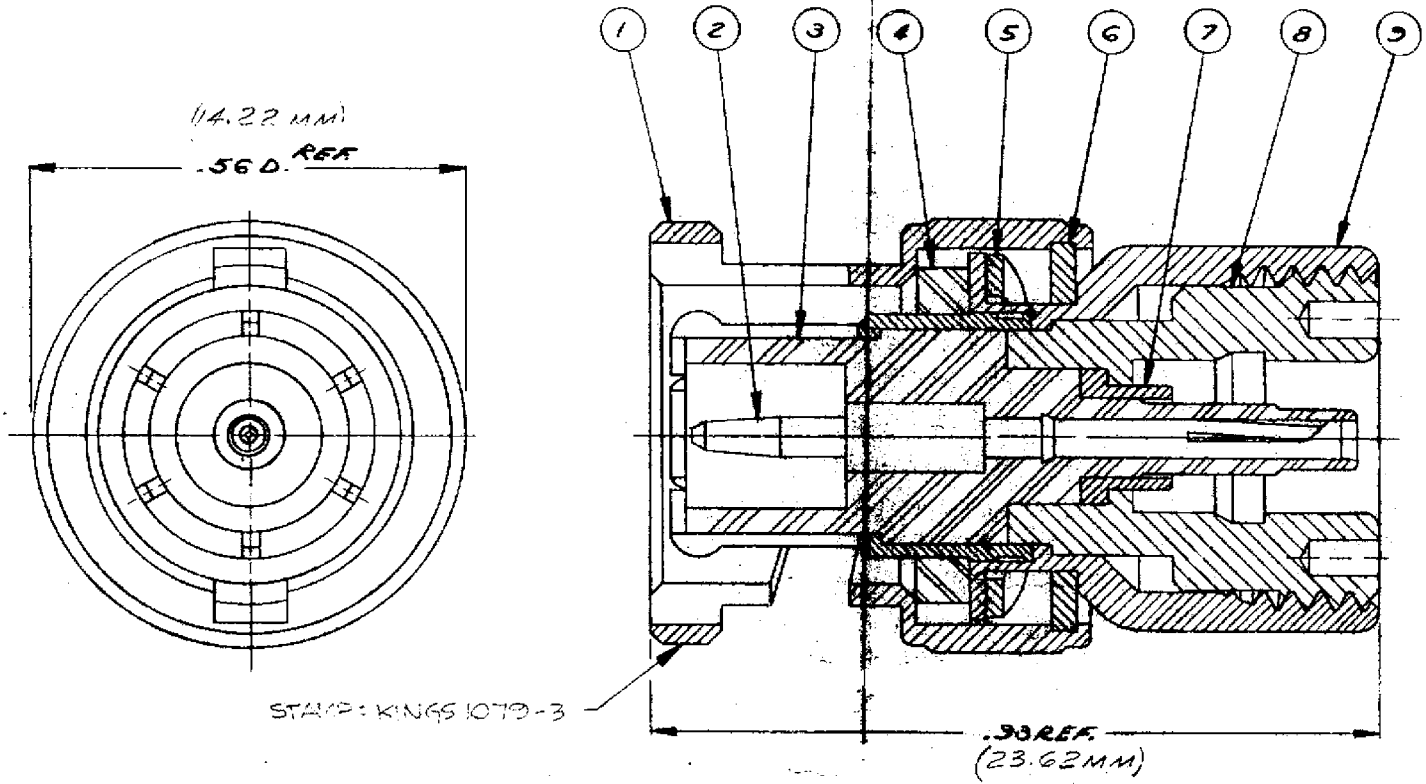
SPEC.

ADAPTER  
BNC (M) TO K-LOC (F)

DRAWN CC DATE 30 JUL 71  
APPR. L1 DATE 2 AUG 71

KINGS ELECTRONICS  
40 MARSHDALE ROAD  
TUCKAHOE, N. Y. 10707

1079-3



9	1	BODY ASSY
8	1	BODY
7	1	OUTER CONTACT
6	1	CAM LEVER
5	1	SPRING WASHER
4	1	GASKET
3	1	INSULATOR
2	1	CONTACT
1	1	BAYONET SLEEVE

ITEM	REQ'D	DESCRIPTION	DRAWING NO.
------	-------	-------------	-------------

UNLESS OTHERWISE SPECIFIED:

1. TOLERANCES: FRACTIONS & 2 PLACE DECIMALS ± .010  
3 PLACE DECIMALS ± .004 ANGLES ± 0° 30'
2. REMOVE ALL BURRS, BREAK SHARP EDGES .005 MAX.
3. NO FILLETS PERMITTED.
4. SURFACE ROUGHNESS 63 MICROINCHES RMS MAX.
5. ALL DIMENSIONS PRIOR TO PLATING.
- T. I. R. CONCENTRICITY OF ANY 2 DIAMETERS MAY NOT EXCEED HALF THE SUM OF THEIR TOLERANCES.