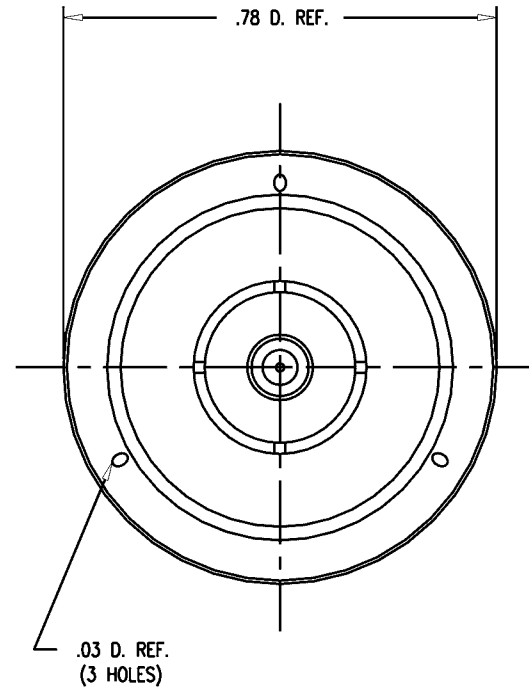
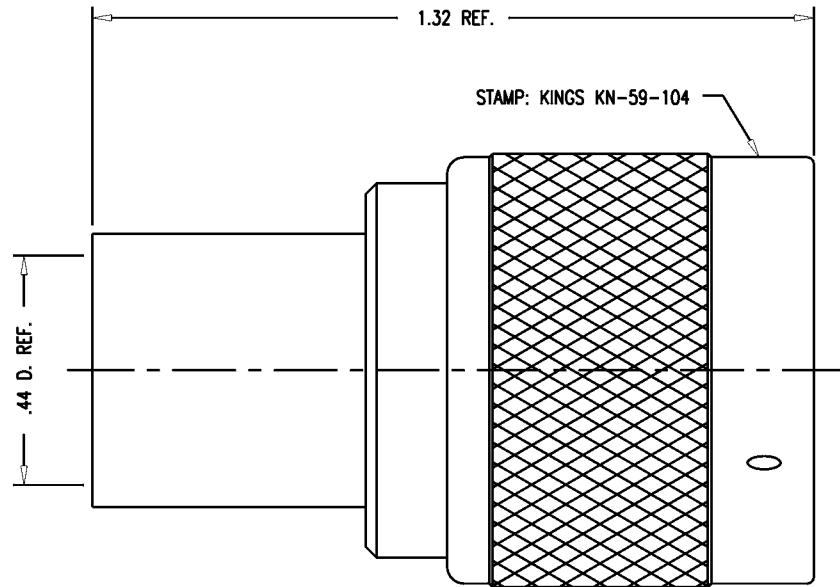


DASH NO.	M CODE	MADE FROM
----------	--------	-----------

GSD

KN-59-104



NOTES:

1. FOR USE WITH RG-9, 9A, 9B, 214/U CABLE.
2. FOR CABLING INSTRUCTIONS SEE CP-402.
3. FOR CABLE TRIMMING USE KTJ-74 & KTD-28.
4. FOR CRIMPING USE DIE KTH-2004.
5. INTERFACE PER MIL-STD-348, FIG. 304-1.
6. MATERIALS:
 - INSULATOR: TEFLON, ASTM-D-1457
 - K-GRIP SLEEVE: COM. BRONZE TUBE, ALLOY 220
 - GASKET: SILICONE RUBBER, QQ-R-765
 - OUTER CONTACT } PHOSPHOR BRONZE, QQ-B-750
 - C-RING }
 - ALL OTHER METAL PARTS: BRASS, ASTM-B16
7. FINISHES:
 - ALL CONTACTS: SILVER PLATE, PER QQ-S-365
 - ALL OTHER METAL PARTS: KINGS TARNISH RESISTANT FINISH (TR-5)
8. ELECTRICAL CHARACTERISTICS:
 - NOMINAL IMPEDANCE: 50 OHMS
 - WORKING VOLTAGE: 1000 VRMS
 - FREQUENCY RANGE: DC TO 11 GHz.

REVISIONS

ISSUE	CHANGES
3	CN 26126 C AJ 05/11/84

WJM1288

SCALE 4:1

APPROX SURFACE AREA

USED ON

REF:

PLUG, N

DRAWN	WJM	DATE	08/19/91
-------	-----	------	----------

DESIGN	MJB	DATE	08/26/91
--------	-----	------	----------

APPR.		DATE	
-------	--	------	--

KINGS
ELECTRONICS CO., INC.
TUCKAHOE, NEW YORK 10707

KN-59-104

GSD