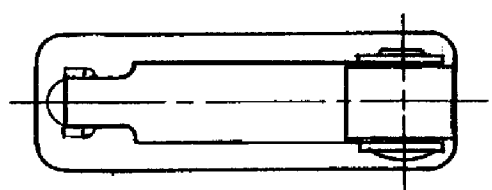
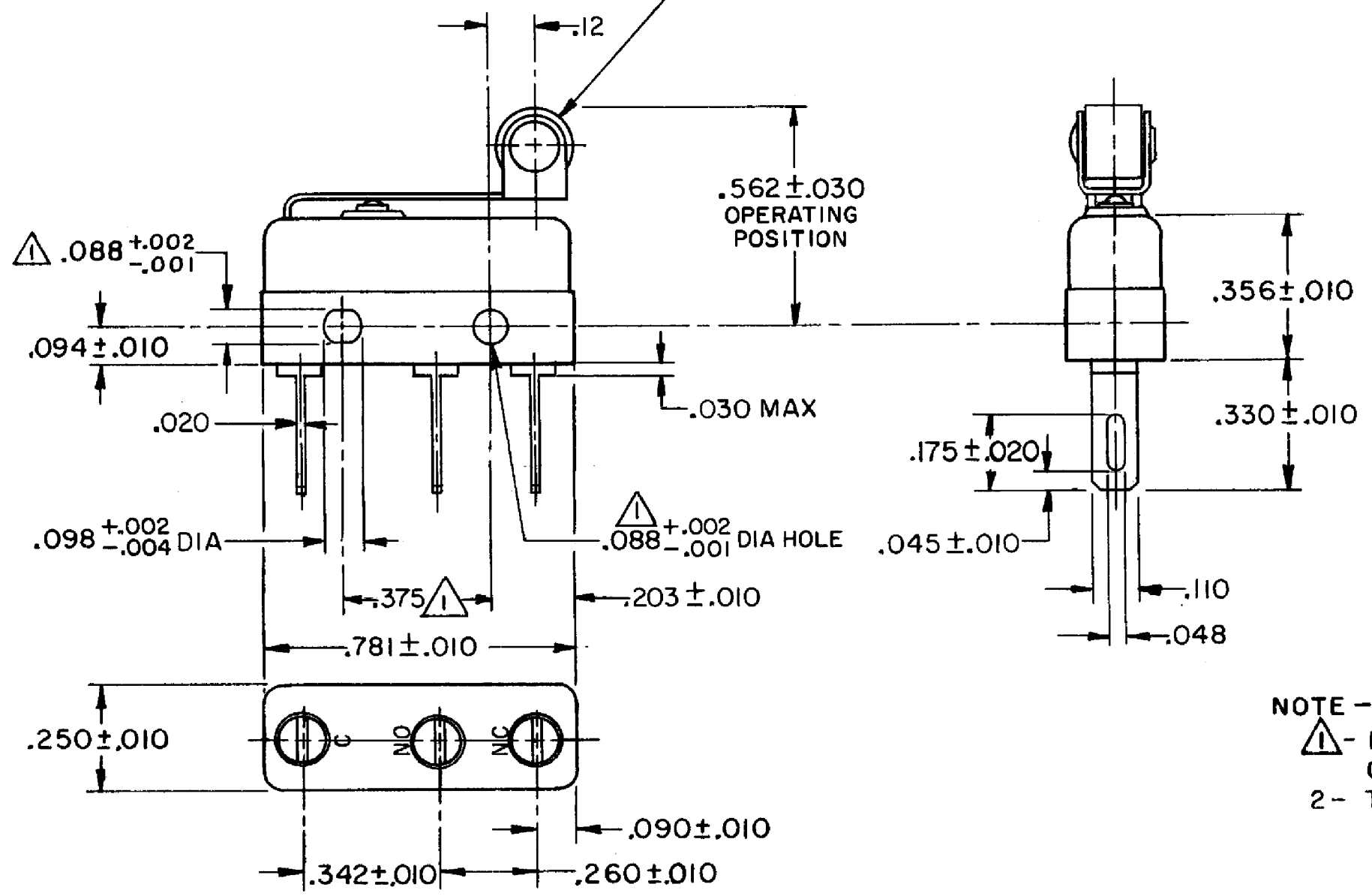


HONEYWELL
PART NUMBER
111SM602-H4
PRODUCT CODE
TYJ9012

REV	DOCUMENT	CHANGED BY	CHECK
8	0038225	PRS 04APR08	BLR



.187 DIA X .125 WIDE OIL BRONZE ROLLER (.005 T. I. R.)



NOTE -
 1 - MOUNTING HOLES WILL ACCEPT PINS OR SCREWS OF .087 MAX DIA ON $.375 \pm .002$ CENTERS
 2 - TERMINALS ARE PLATED FOR SOLDERING

RELEASE NO.	PR - 3451
REPLACES	-

CHARACTERISTICS	
OPERATING FORCE - - - -	7 OZ MAX
RELEASE FORCE - - - - -	2 OZ MIN
PRETRAVEL - - - - -	.219 MAX
DIFFERENTIAL TRAVEL - - -	.025 MAX
OVERTRAVEL - - - - -	.030 MIN

ELECTRICAL DATA		
CONTACT ARRANGEMENT SPDT		
30 VOLTS DC RATING		
	SEA LEVEL	50,000 FT
INDUCTIVE	3 AMP	2.5 AMP
RESISTIVE	5 AMP	5 AMP
MAXIMUM INRUSH 24 AMP		
APPROVALS	KEMA, CE	5A, 250V ~ T85 1E4
	UL, CSA	5A, 250 VAC
		CE
		UL

DESIGN UNITS: INCH
TOLERANCES UNLESS NOTED:
NO PLACE X ± -
ONE PLACE .X ± 0.030
TWO PLACE .XX ± 0.015
THREE PLACE .XXX ± 0.005
FOUR PLACE .XXXX ± -
ANGLES ± -
THIRD ANGLE PROJECTION

DRAWN	VK	29 OCT 07
CHECK	RJ	29 OCT 07
THIS DRAWING COVERS A PROPRIETARY ITEM AND IS THE PROPERTY OF HONEYWELL. THIS DRAWING IS NOT TO BE COPIED OR USED WITHOUT THE PERMISSION OF HONEYWELL.		
INTERPRET PER ANSI Y14.5M-1982 OTHER HONEYWELL ENGINEERING STANDARDS MAY APPLY		
RASTER		

Honeywell			
TITLE SWITCH - BASIC			
SIZE	TYPE	DRAWING NAME	REV
B	I	111SM602-H4	8
SCALE	-	WEIGHT .008 LB MAX	SHEET 1 OF 1