

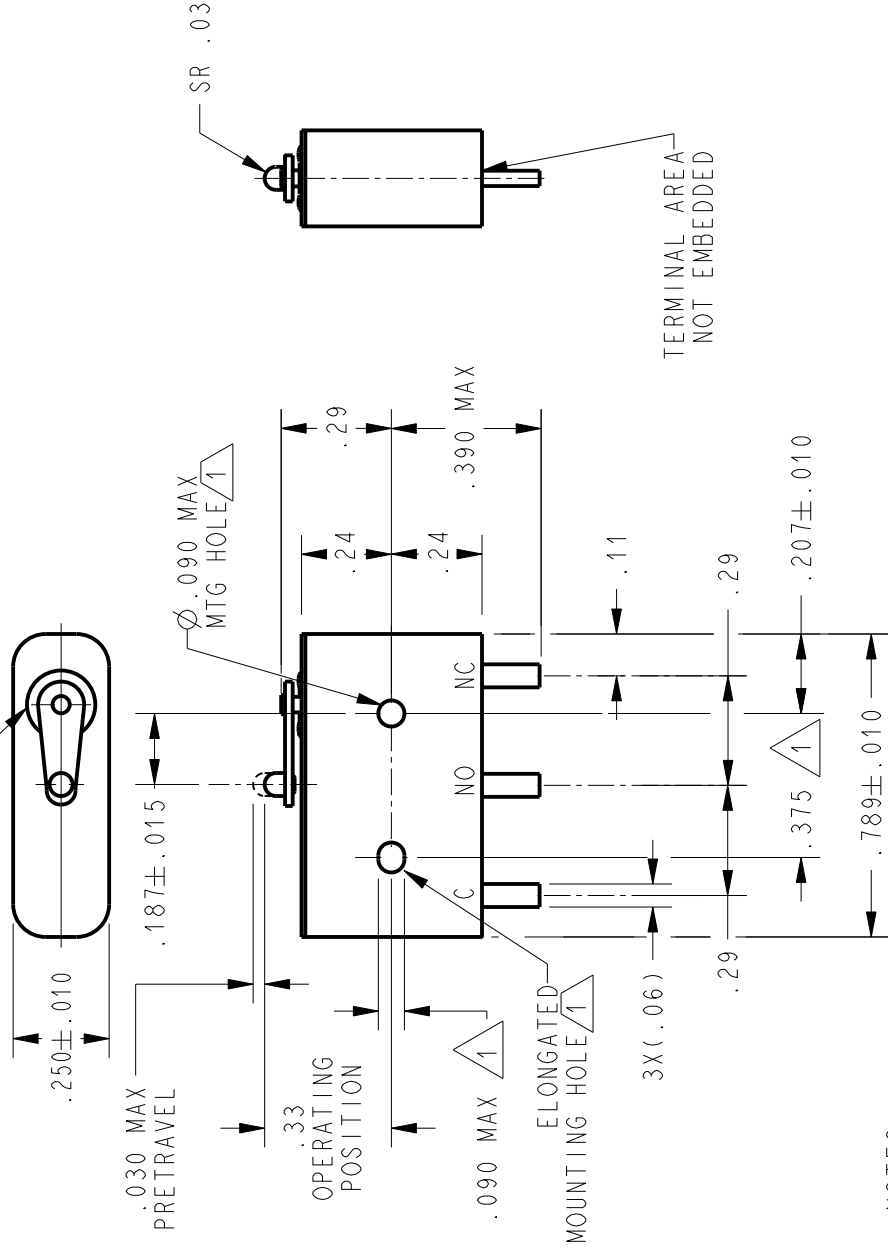
CATALOG LISTING	ISSUE	2
	PAGE 1 OF 1	1

**19HM6-CB**

REPLACES -

RELEASE NO. 203932

WOBBLEFRAM ACTUATOR SEAL



**NOTES**

- 1 - MOUNTING HOLES WILL ACCEPT PINS OR SCREWS OF  $\phi .087$  MAX ON  $.375 \pm .002$  CENTERS
- 2 - FOR USE IN TEMPERATURE RANGE  $-300^{\circ}\text{F}$  TO  $+500^{\circ}\text{F}$
- 3 - HERMETICALLY SEALED (METAL-TO-METAL, GLASS-TO-METAL)
- 4 - ALL EXPOSED PARTS ARE OF CORROSION RESISTANT MATERIALS
- 5 - TERMINALS ARE TINNED FOR SOLDERING
- 6 - DO NOT: APPLY MORE THAN 1 1/2 INCH-LBS OF TORQUE WHEN TIGHTENING MOUNTING SCREWS
- 7 - GOLD ALLOY MOVABLE CONTACTS AND GOLD ALLOY STATIONARY CONTACTS
- 8 - DRY NITROGEN FILL GAS

ANSI Y14.5M-1982 APPLIES

THIS DRAWING COVERS A PROPRIETARY ITEM AND IS THE PROPERTY OF MICRO SWITCH, A DIVISION OF HONEYWELL. THIS DRAWING IS NOT TO BE COPIED OR USED WITHOUT THE APPROVAL OF MICRO SWITCH.

CHARACTERISTICS	ELECTRICAL DATA
OPERATING FORCE----- $.11.0$ OZ MAX	CONTACT ARRANGEMENT S P D T
DIFFERENTIAL TRAVEL----- $.004$ MAX	UNLESS OTHERWISE SPECIFIED TOLERANCES ARE
RELEASE FORCE----- $1.5$ OZ MIN	ONE PLACE (.0)
OVERTRAVEL----- $.006$ MIN	TWO PLACE (.00)
	THREE PLACE (.000)
	ANGLES
	WEIGHT $.014$ LB MAX

SCALE 2 : 1 DO NOT SCALE PRINT

UNLESS OTHERWISE SPECIFIED TOLERANCES ARE

ONE PLACE (.0)  $\pm .030$   
TWO PLACE (.00)  $\pm .015$   
THREE PLACE (.000)  $\pm .005$

ANGLES

WEIGHT  $.014$  LB MAX



SCALE 2 : 1

UNLESS OTHERWISE SPECIFIED TOLERANCES ARE

ONE PLACE (.0)  $\pm .030$   
TWO PLACE (.00)  $\pm .015$   
THREE PLACE (.000)  $\pm .005$

ANGLES

WEIGHT  $.014$  LB MAX

PTC/CAD 2D

DRAWN

13SEP01

CHECK

SAV

CHECK

13SEP01

AK

CHECK

AK

APR 04

CHECK

APR 04

REVISIONS

A 0004462

MSR

APR04