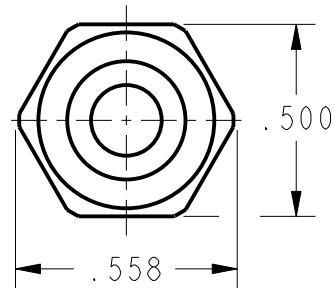
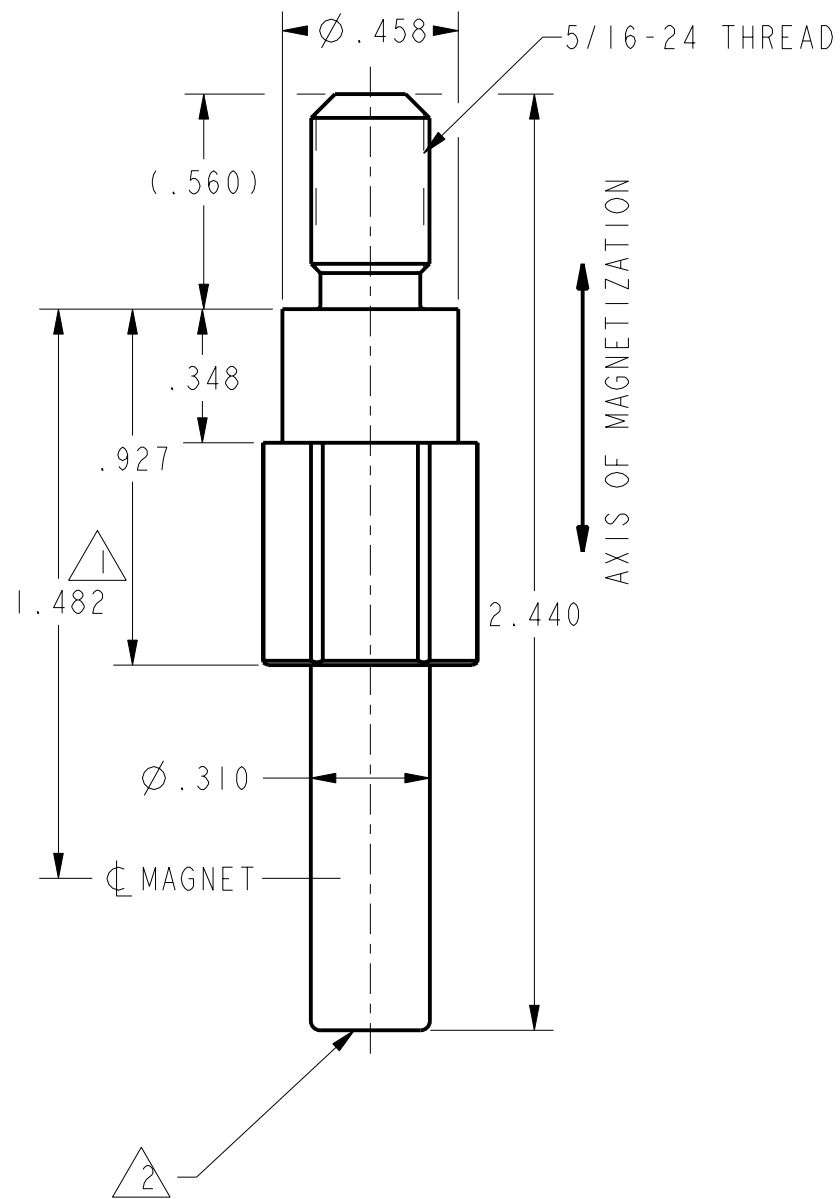


REV	DOCUMENT	CHANGED BY	CHECK
I	PR-24293	LJK 7 DEC 99	JAF



CAUTION
 CONTACTING THE MAGNETIZED MAGNET WITH FERRO-MAGNETIC MATERIAL (SCREW DRIVERS, PLIERS, ANOTHER MAGNET, ETC.) OR BRINGING THE MAGNET QUITE CLOSE TO SUCH MATERIAL CAN CAUSE AN APPRECIABLE DROP IN REMANENT INDUCTION. IT IS DIFFICULT TO STABILIZE AGAINST THIS TYPE OF ABUSE. THE REMEDY IS TO AVOID SUCH PRACTICES. REF. "PERMANENT MAGNET GUIDELINES" BY THE MAGNETIC MATERIALS PRODUCERS ASSOCIATION



NOTE
 READING IN VOLTS USING SS495 AT 3 LOCATIONS, 1.482±.300 AT HALL ELEMENT OF GAUSS METER WITH A GAP OF .212

DIM	VOLTS
1.182	0-2
1.482	2.0-3.0
1.782	3-5

2 SOUTH END OF MAGNET UNMARKED

UNLESS OTHERWISE SPECIFIED TOLERANCES ARE:		<input checked="" type="checkbox"/> US (inch) CUSTOMARY	<input type="checkbox"/> SI (mm) METRIC
NO PLACE	X	±.040	±1
ONE PLACE	.X	±.030	±0,4
TWO PLACE	.XX	±.015	±0,15
THREE PLACE	.XXX	±.005	±
ANGLES		±	±
RAW MATERIAL-COMMERCIAL STANDARD			
THIRD ANGLE PROJECTION			

DRAWN	LJK	7 DEC 99
CHECK	JAF	7 DEC 99
THIS DRAWING COVERS A PROPRIETARY ITEM AND IS THE PROPERTY OF HONEYWELL SENSING AND CONTROL. THIS DRAWING IS NOT TO BE COPIED OR USED WITHOUT THE PERMISSION OF HONEYWELL.		
DIMENSIONS ARE TO BE MET BEFORE PROTECTIVE COATINGS ARE APPLIED		
PTC 3D	ASME Y14.5M-1994	

Honeywell Sensing and Control			
TITLE MAGNET, ACTUATOR			
SIZE	DWG TYPE	DRAWING NAME	REV
B	M	1MGH2	1
SCALE 2 : 1		WEIGHT	SHEET 1 OF 1