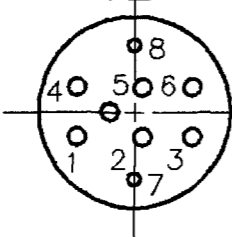
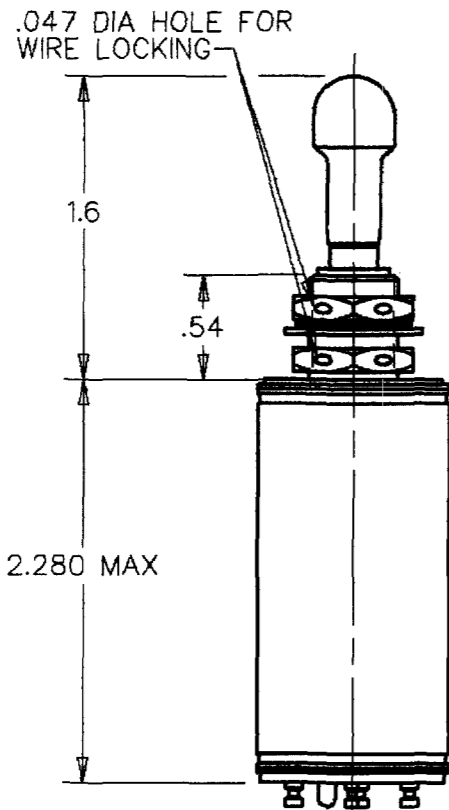
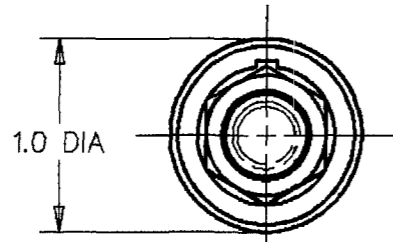


MICRO SWITCH
 FREEPORT, ILLINOIS, U. S. A.
 A DIVISION OF HONEYWELL
 FED. MFG. CODE 91929

**SWITCH - TOGGLE
 (MAGNETIC HOLD-IN)**

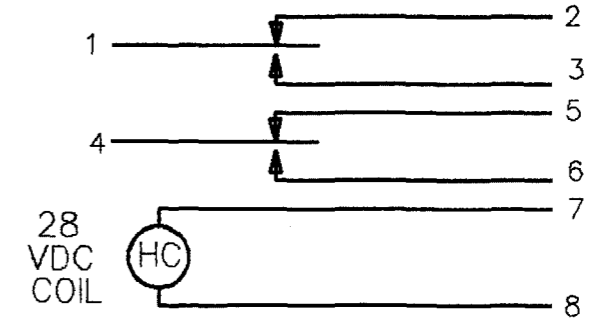
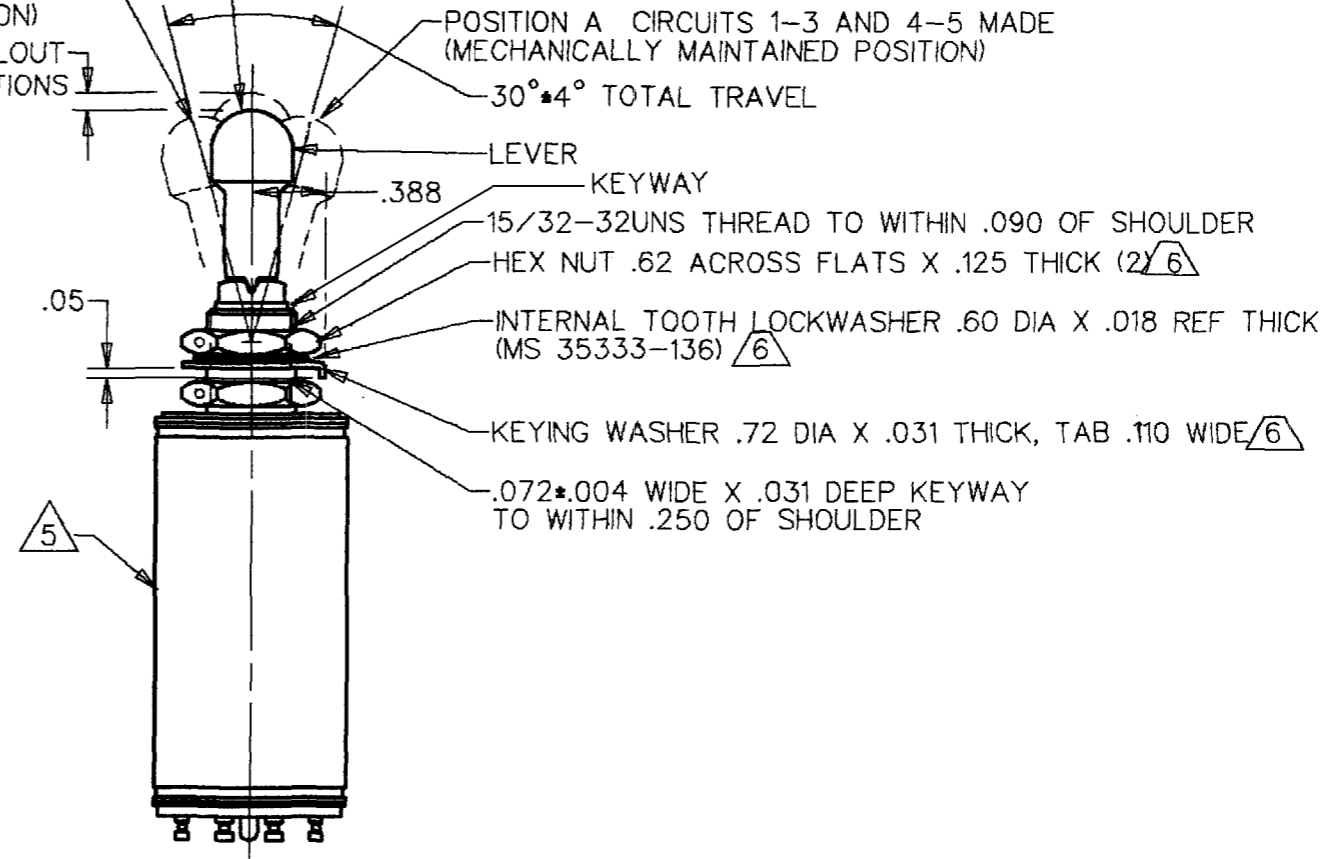
CATALOG LISTING
27ET127-T-E



POSITION B CIRCUITS 1-2 AND 4-5 MADE
 (MECHANICALLY MAINTAINED POSITION)

POSITION C CIRCUITS 1-2 AND 4-6 MADE
 (ELECTRICALLY MAINTAINED POSITION)

.090 APPROX PULLOUT
 TO CHANGE POSITIONS



CIRCUIT DIAGRAM
 (MECHANICALLY MAINTAINED
 POSITION B)

27ET127-T-E

M

DRAWING NUMBER

ISSUE

5

REVISIONS

A	CO61410	
6	KAG	6 MAY 87
B	CO62277	
	DJS	14 NOV 87
C	CO95336	
	DLT	28 OCT 99

CHECK

21JUL87

MAM

CHECK

6MAY87

DRAWN

FORMTEK

REPLACES
 RELEASE NO. PR-14044
 CHECK
 21JUL87
 MAM
 CHECK
 6MAY87
 DRAWN

THIS DRAWING COVERS A PROPRIETARY ITEM AND IS THE PROPERTY OF MICRO SWITCH, A DIVISION OF HONEYWELL. THIS DRAWING IS NOT TO BE COPIED OR USED WITHOUT THE APPROVAL OF MICRO SWITCH

CHARACTERISTICS	
SOLENOID RATING AT 20° C	3
STEAD STATE LIMITS	20-29 VDC
HOLD IN	15 VDC
DROP OUT	0-15 VDC
COIL RESISTANCE	220 OHM MIN
OPERATING FORCE	7 LBS MAX
OVERRIDE FORCE AT 29 VDC	10 LBS MAX

ELECTRICAL DATA	
CONTACT ARRANGEMENT SPDT (2)	
RATINGS IN AMPHERES	
VOLTAGE	SEA LEVEL 65,000 FT
28 VOLTS DC	INFLUSH RES IND MOTOR INFLUSH RES IND MOTOR
	7 2 5 1.5

SCALE	FULL
DO NOT SCALE PRINT	
TOLERANCES	
APPLY TO DESIGN UNITS. CONVERSIONS ARE ONLY FOR REFERENCE. UNLESS NOTED, TOLERANCES ARE ±	
ONE PLACE	(.01) ±.030
TWO PLACES	(.00) ±.015
THREE PLACES	(.000) ±.005
ANGLES	±
RAW MATERIAL-COMMERCIAL STANDARD	
THIRD ANGLE PROJECTION	
WEIGHT	6 OZ MAX

- NOTES
- 1 - EXPOSED PARTS ARE OF CORROSION RESISTANT MATERIAL OR ARE SUITABLY PROTECTED TO PREVENT CORROSION. ENCLOSURE FINISHED WITH BLUE EPOXY BASED ENAMEL COLOR NO. 25184 PER FEDERAL STANDARD 595
 - 2 - SWITCH SEALED PER MIL-S-5594
 - 3 - HOLD IN VOLTAGE: THE MINIMUM SPECIFIED VOLTAGE AT WHICH THE LEVER WILL REMAIN ACTUATED. HOLD IN MAY OCCUR AT A LOWER VALUE. DROP OUT VOLTAGE: THE VOLTAGE RANGE IN WHICH THE LEVER WILL BE RELEASED
 - 4 - CIRCUITS CAN BE TRANSFERRED MANUALLY. ENERGIZING THE COIL WILL NOT CAUSE TRANSFER OF CIRCUITS
 - 5 - CIRCUIT IDENTIFICATION IS SHOWN ON SWITCH
 - 6 - HARDWARE MAY BE FURNISHED UNASSEMBLED PER MIL-S-5594