

HONEYWELL

See full Datasheet below...

onlinecomponents.com
THE ONLINE DISTRIBUTOR OF ELECTRONIC COMPONENTS

BUY NOW

 **MASTER**TM
ELECTRONICS

BUY NOW

masterelectronics.com & onlinecomponents.com
are **authorized** e-commerce distributors
of electronic components.



MICRO SWITCH
 FREEPORT, ILLINOIS U S A
 A DIVISION OF HONEYWELL

FED. MFG. CODE 91929

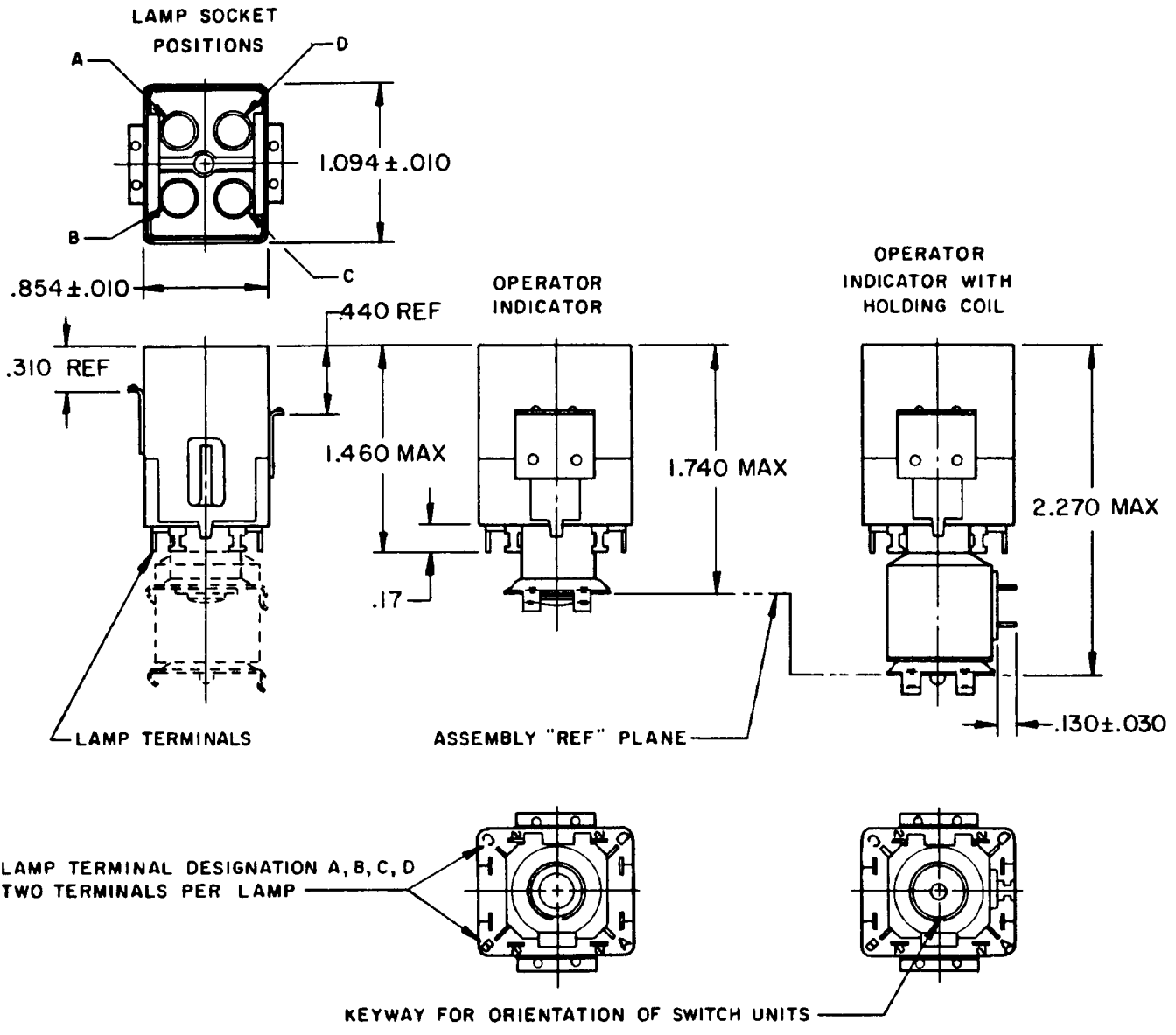
**OPERATOR INDICATOR
 UNITS
 BARRIER MOUNT**

CATALOG LISTING
2C200 SERIES

CHART 5

THIS DRAWING COVERS A PROPRIETARY ITEM AND IS THE PROPERTY OF MICRO SWITCH, A DIVISION OF MINNEAPOLIS-HONEYWELL REGULATOR CO. THIS DRAWING IS NOT TO BE COPIED OR USED WITHOUT THE APPROVAL OF MICRO SWITCH.

2C200 SERIES CHART 5
 DRAWING NUMBER
 3
 ISSUE
 REVISIONS
 A CO-82436 JALA 7 FEB 96
 DRAWN
 OM W 21 JAN 65
 CHECK
 HSD
 18 JAN 66
 CHECK
 CSK
 18 JAN 66
 CHECK
 CSK
 18 JAN 66
 REPLACES
 SR11539
 SR11539



LAMP TERMINAL DESIGNATION A, B, C, D
 TWO TERMINALS PER LAMP

KEYWAY FOR ORIENTATION OF SWITCH UNITS

NOTE-

- 1 - TERMINALS ARE PLATED FOR SOLDERING
- 2 - RELAMPABLE FROM FRONT OF PANEL WITHOUT TOOLS

LAMP SOCKET POSITIONS	CATALOG LISTINGS			SCALE	
	OPERATOR INDICATOR	OPERATOR INDICATOR WITH HOLDING COIL			DO NOT SCALE PRINT
		6 VDC	28 VDC	48 VDC	
A, C	2C207	(A)	2C231	(A)	UNLESS OTHERWISE SPECIFIED DIMENSIONS ARE IN INCHES TOLERANCES ARE: ONE PLACE (.01) ± .030 TWO PLACE (.001) ± .015 THREE PLACE (.000) ± .005 ANGLES ± .005
A, B, C, D	2C209	(A)	2C233	(A)	
					WEIGHT

FORMTEK