

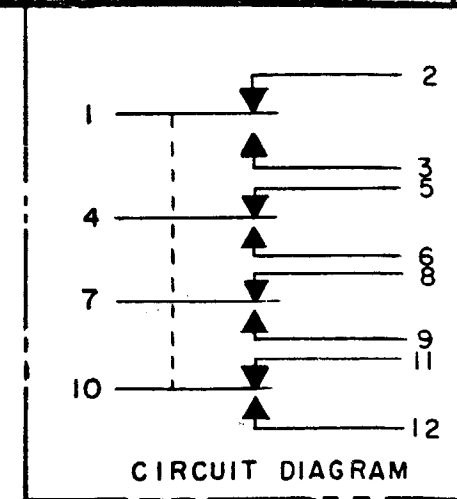
# MICRO SWITCH

A DIVISION OF MINNEAPOLIS HONEYWELL REGULATOR COMPANY  
 FREEPORT, ILLINOIS  
 FED. MFR. CODE 91929

# SWITCH - ENCLOSED

CATALOG LISTING  
**624EN1-6**

MILITARY STDS PART NO.  
 MS27240-4



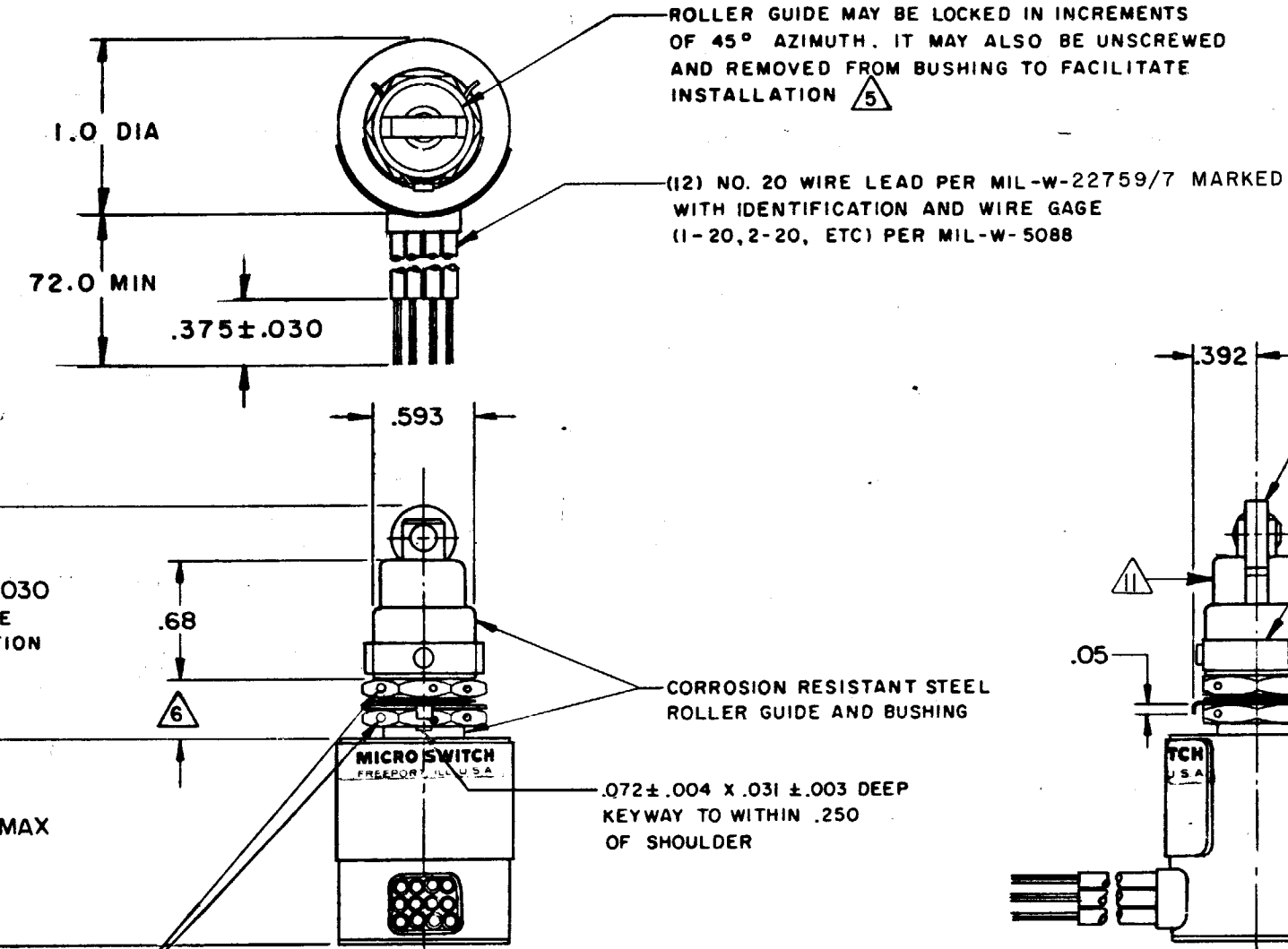
**624EN1-6**  
 DRAWING NUMBER  
 ISSUE 2021  
 M B F  
 14 SEP 64  
 CHECK

M	CO-33071	K P K	1 FEB 74
N	CO31502	K P K	28 NOV 74
P	CO35858	D J W	2 SEPT 75
R	CO37413	C J H	29 OCT 76
S	CO44638	T R F	10 NOV 78
T	CO47573 PART 4	R J H	15 AUG 80
U	CO49806	D J W	25 SEPT 81
V	CO57370	T A D	15 MAY 85
W	CO 75787-C	DAW	16 MAY 94

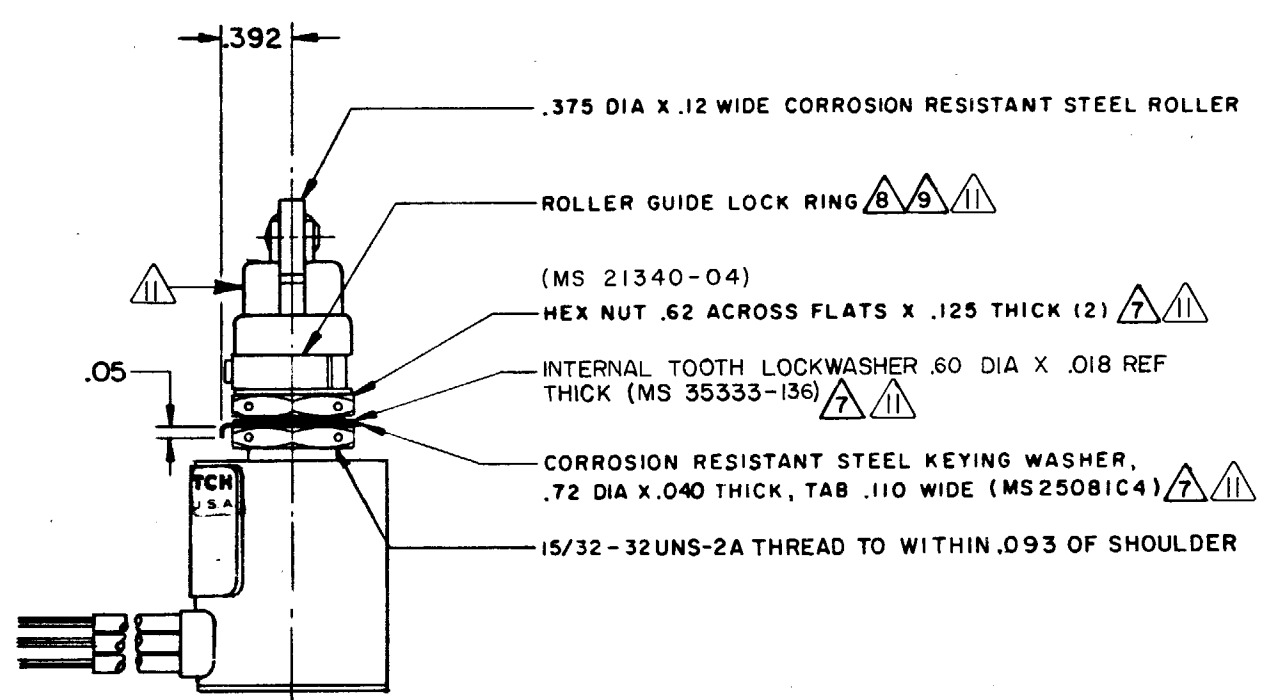
A	MADE P	15 JAN 65
B	CO20147	27 SEP 65
C	SR12154	21 JAN 66
D	CO22513	22 FEB 67
E	CO22953	31 AUG 67
F	CO23896	19 MAR 68
G	CO 27398	12 MAY 70
H	CO27520	12 AUG 70
J	CO28997	14 MAY 71
K	CO28681	7 SEP 71
L	CO30880	10 AUG 72

THIS DRAWING COVERS A PROPRIETARY ITEM AND IS THE PROPERTY OF MICRO SWITCH, A DIVISION OF MINNEAPOLIS-HONEYWELL REGULATOR CO. THIS DRAWING IS NOT TO BE COPIED OR USED WITHOUT THE APPROVAL OF MICRO SWITCH.

CHARACTERISTICS		ELECTRICAL DATA		SCALE FULL
OPERATING FORCE	6 - 12 LB	CONTACT ARRANGEMENT	SPDT (4)	DO NOT SCALE PRINT
FULL OVERTRAVEL FORCE	30 LB MAX			UNLESS OTHERWISE SPECIFIED DIMENSIONS ARE IN INCHES
RELEASE FORCE	4 LB MIN			TOLERANCES ARE:
PRETRAVEL	.040 MAX			ONE PLACE (.0) ±.030
DIFFERENTIAL TRAVEL	.020 MAX			TWO PLACE (.00) ±.018
OVERTRAVEL	.125 MIN			THREE PLACE (.000) ±.008
				ANGLES ±
				WEIGHT .85 LB



ROLLER GUIDE MAY BE LOCKED IN INCREMENTS OF 45° AZIMUTH. IT MAY ALSO BE UNSCREWED AND REMOVED FROM BUSHING TO FACILITATE INSTALLATION  $\triangle 5$   
 (12) NO. 20 WIRE LEAD PER MIL-W-22759/7 MARKED WITH IDENTIFICATION AND WIRE GAGE (1-20, 2-20, ETC) PER MIL-W-5088



- NOTES
- CORROSION RESISTANT STEEL ENCLOSURE
  - SWITCH SEALED PER MIL-S-8805 SYMBOL 4
  - COINCIDENCE OF OPERATING AND RELEASING POINTS: .010 INCH OF PLUNGER TRAVEL
  - CIRCUIT DIAGRAM, CATL. LIST. AND MILITARY STDS PART NO. MS27240-4 ARE SHOWN ON NAMEPLATE
  - TO ADJUST ROLLER DIRECTION REMOVE ROLLER GUIDE LOCK RING, SCREW ROLLER GUIDE TO DESIRED DIRECTION, SECURE BY REPLACING ROLLER GUIDE LOCK RING
  - ROLLER GUIDE LOCATION CAN VARY BETWEEN .292 AND .450 WHILE MAINTAINING .125 MIN OVERTRAVEL
  - REPLACEMENT MOUNTING HARDWARE - PACKET 19PA9
  - REPLACEMENT ROLLER GUIDE AND LOCKRING - PACKET 15PA105
  - REPLACEMENT LOCKRING - PACKET 15PA107
  - APPLICATION INFORMATION ONLY
  - HARDWARE MAY BE PACKAGED UNASSEMBLED PER MIL-S-8805

FO-80376-003