

# MICRO SWITCH

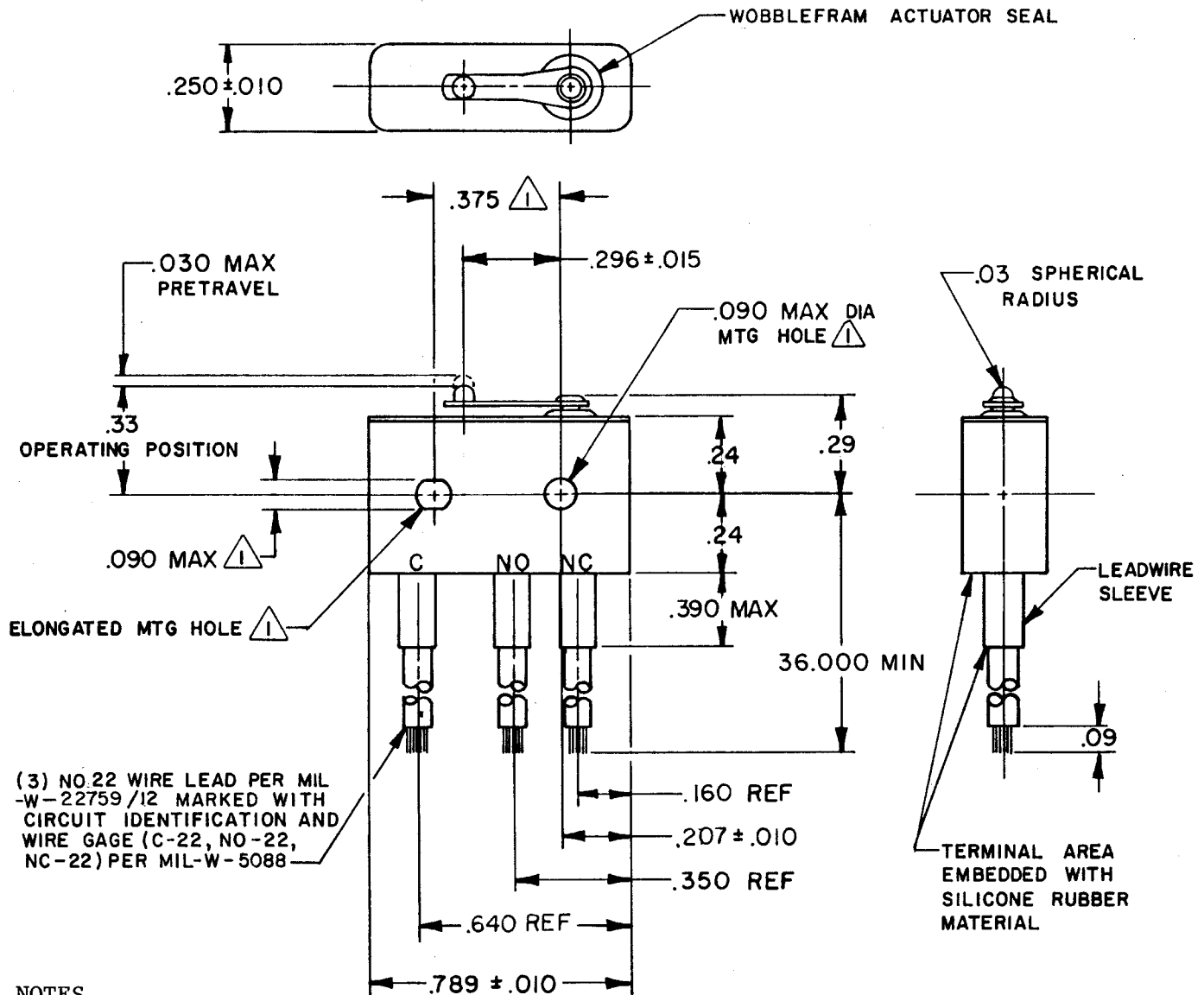
FREEPORT ILLINOIS, U.S.A  
A DIVISION OF HONEYWELL  
FED. MFG. CODE 91929

# SWITCH - BASIC

CATALOG LISTING

## 6HM1-3

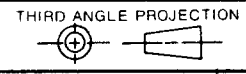
6HM1-3  
 M  
 DRAWING NUMBER  
 ISSUE  
 8  
 REVISIONS  
 A CO 51776  
 GRT 29 JUL 82  
 B CO71228  
 DAW 1 NOV 91  
 C CO80788  
 SAD 21 APR 95  
 FO-52848-A  
 DRAWN  
 GRT 29 JUL 82  
 CHECK CEB 10 AUG 82  
 CHECK  
 RELEASE NO. PR-157  
 REPLACES



(3) NO.22 WIRE LEAD PER MIL -W-22759/12 MARKED WITH CIRCUIT IDENTIFICATION AND WIRE GAGE (C-22, NO-22, NC-22) PER MIL-W-5088

- NOTES**
- 1 MOUNTING HOLES WILL ACCEPT PINS OR SCREWS OF .087 MAX DIA ON .375 ± .002 CENTERS
  - 2 - FOR USE IN TEMPERATURE RANGE -85°F TO +500°F (DOWN TO -300°F IF WIRE LEADS ARE NOT FLEXED)
  - 3 - HERMETICALLY SEALED (METAL TO METAL, GLASS TO METAL)
  - 4 - ALL EXPOSED PARTS ARE OF CORROSION RESISTANT MATERIALS
  - 5 WEIGHT OF SWITCH ONLY IS 0.014 LB MAX. WEIGHT OF CONDUCTOR GROUP ONLY IS 0.013 LB MAX PER FOOT
  - 6 - DO NOT APPLY MORE THAN 1 1/2 INCH LBS OF TORQUE WHEN TIGHTENING MOUNTING SCREWS

THIS DRAWING COVERS A PROPRIETARY ITEM AND IS THE PROPERTY OF MICRO SWITCH, A DIVISION OF HONEYWELL. THIS DRAWING IS NOT TO BE COPIED OR USED WITHOUT THE APPROVAL OF MICRO SWITCH.



CHARACTERISTICS	ELECTRICAL DATA			SCALE 2 : 1																												
OPERATING FORCE ----- 7 OZ MAX	CONTACT ARRANGEMENT S P D T			DO NOT SCALE PRINT																												
RELEASE FORCE ----- 1 OZ MIN	LINE VOLTAGE	INDUCTIVE LOAD	RESISTIVE LOAD	<b>TOLERANCES</b> APPLY TO DESIGN UNITS. CONVERSIONS ARE ONLY FOR REFERENCE. UNLESS NOTED, TOLERANCES ARE ±																												
DIFFERENTIAL TRAVEL ----- .006 MAX	28 VDC	2 AMP	4 AMP																													
OVERTRAVEL ----- .003 MIN	115 VAC (400 CYCLE)	2 1/2 AMP	2 1/2 AMP	<table border="1"> <tr> <td>DIM.</td> <td>TOL.</td> <td>DIM.</td> <td>TOL.</td> </tr> <tr> <td>mm</td> <td>mm/in</td> <td>in</td> <td>mm/in</td> </tr> <tr> <td>NO PLACES</td> <td>X</td> <td>1/.04</td> <td>X</td> </tr> <tr> <td>ONE PLACE</td> <td>X,X</td> <td>0.4/.016</td> <td>X,X</td> </tr> <tr> <td>TWO PLACES</td> <td>X,X,X</td> <td>0.15/.006</td> <td>X,X,X</td> </tr> <tr> <td>THREE PLACES</td> <td>X,X,X,X</td> <td></td> <td>X,X,X,X</td> </tr> <tr> <td>ANGLES</td> <td></td> <td></td> <td></td> </tr> </table>	DIM.	TOL.	DIM.	TOL.	mm	mm/in	in	mm/in	NO PLACES	X	1/.04	X	ONE PLACE	X,X	0.4/.016	X,X	TWO PLACES	X,X,X	0.15/.006	X,X,X	THREE PLACES	X,X,X,X		X,X,X,X	ANGLES			
DIM.	TOL.	DIM.	TOL.																													
mm	mm/in	in	mm/in																													
NO PLACES	X	1/.04	X																													
ONE PLACE	X,X	0.4/.016	X,X																													
TWO PLACES	X,X,X	0.15/.006	X,X,X																													
THREE PLACES	X,X,X,X		X,X,X,X																													
ANGLES																																
	DESIGN UNITS	<input type="checkbox"/> SI METRIC <input checked="" type="checkbox"/> US CUSTOMARY																														
	WEIGHT	5																														