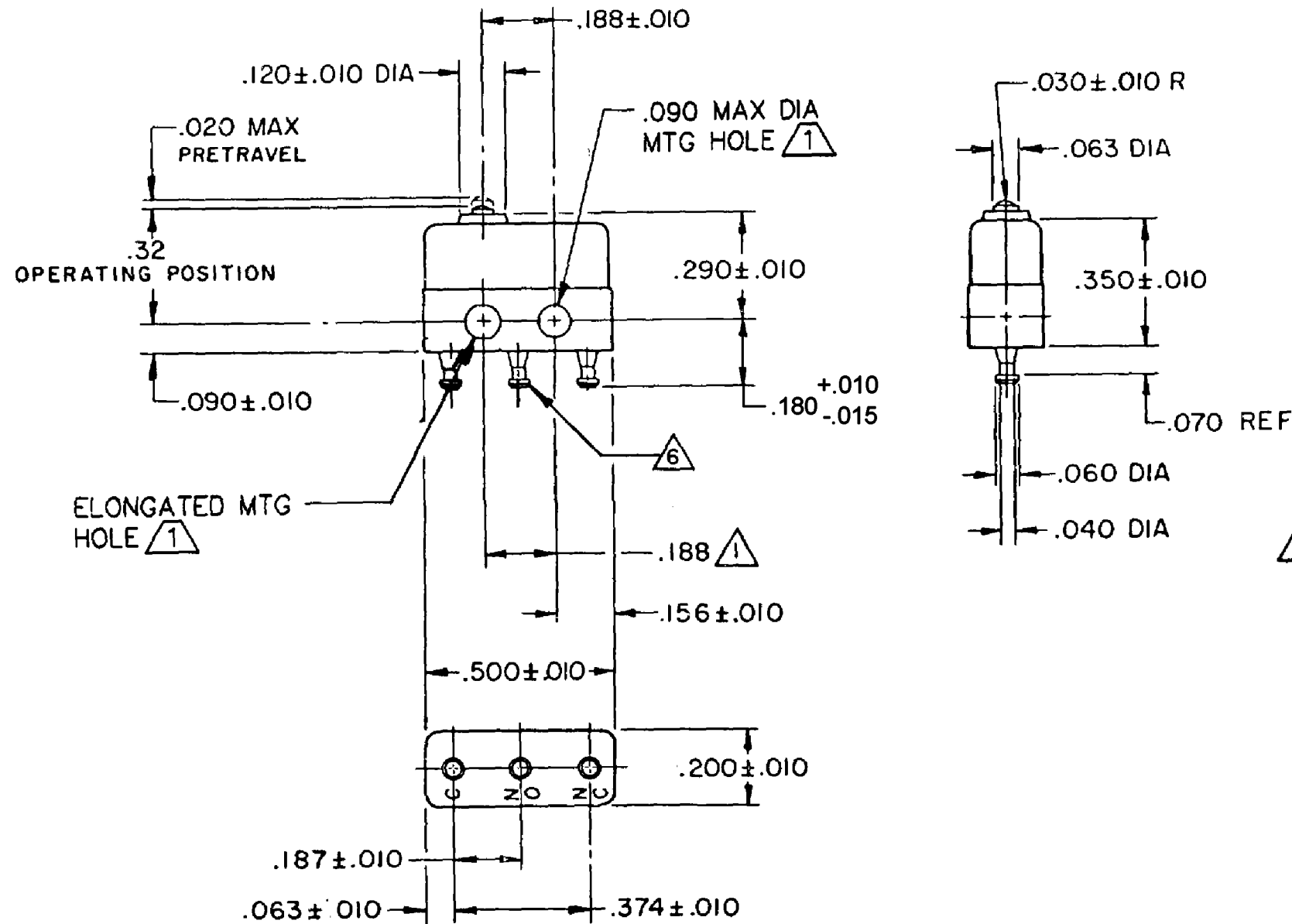
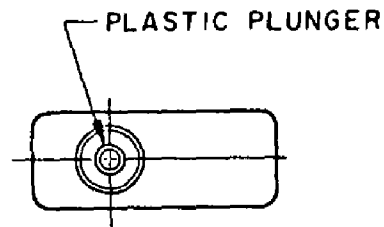


HONEYWELL PART NUMBER
7SX1-T
PRODUCT CODE VDH1010

REV	DOCUMENT	CHANGED BY	CHECK
14	0089212	NMN 09MAY12	CMH



- NOTES**
- 1 MOUNTING HOLES WILL ACCEPT PINS OR SCREWS OF .087 MAX DIA ON .188±.002 CENTERS
 - 2 - TERMINALS ARE SOLDER DIPPED WITH RoHS-COMPLIANT TIN/COPPER/SILVER SOLDER.
 - 3 - SWITCH WILL WITHSTAND TEMPERATURE OF 250° F
 - 4 - MOVABLE CONTACT MATERIAL- GOLD PLATED GOLD ALLOY.
 - 5 - STATIONARY CONTACT MATERIAL-GOLD ALLOY

RELEASE NO.	PR-10192
REPLACES	

CHARACTERISTICS	
OPERATING FORCE	3 OZ MAX
RELEASE FORCE	1 OZ MIN
DIFFERENTIAL TRAVEL	.005 MAX
OVERTRAVEL	.004 MIN

ELECTRICAL DATA		
CONTACT ARRANGEMENT SPDT		
30 VOLTS DC RATING		
	SEA LEVEL	50,000 FT
INDUCTIVE	0.5 AMP	0.5 AMP
RESISTIVE	1 AMP	1 AMP
MAXIMUM INRUSH 2 AMP		
KEMA, CE	1 A 250V~ T125 25E3	CE
UL, CSA	1 A 125 VAC	UL BRAND L22J

DESIGN UNITS: INCH
TOLERANCES UNLESS NOTED:
NO PLACE X ±
ONE PLACE .X ±
TWO PLACE .XX ±
THREE PLACE .XXX ±
FOUR PLACE .XXXX ±
ANGLES ±
THIRD ANGLE PROJECTION

DRAWN	SPK	08FEB08
CHECK	RJ	08FEB08
THIS DRAWING COVERS A PROPRIETARY ITEM AND IS THE PROPERTY OF HONEYWELL. THIS DRAWING IS NOT TO BE COPIED OR USED WITHOUT THE PERMISSION OF HONEYWELL.		
INTERPRET PER ANSI Y14.5M-1982 OTHER HONEYWELL ENGINEERING STANDARDS MAY APPLY		
RASTER		

Honeywell			
TITLE SWITCH - BASIC			
SIZE	TYPE	DRAWING NAME	REV
B	I	7SX1-T	14
SCALE	NONE	WEIGHT:.003 LB MAX	SHEET 1 OF 1