

**MICRO SWITCH**

A DIVISION OF MINNEAPOLIS-HONEYWELL REGULATOR COMPANY  
 FREEPORT, ILLINOIS  
 FED. MFR. CODE 91929

**SWITCH-BASIC**

(M) BZ-2AT  
 REPLACES ISSUE 3

BZ-2AT

M

DRAWING NUMBER

ISSUE

8

ISSUE

8

REPLACES

RELEASE NO.

CHECK

18 FEB. 58

24 JULY 58

3 MAR 61

26 JAN 71

18 JUL 91

20 FEB. 58

20 FEB. 58

18 FEB. 58

CHECK

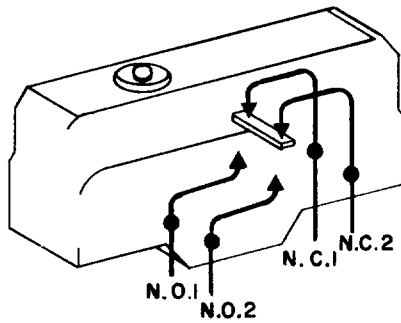
18 FEB. 58

CHECK

18 FEB. 58

CHECK

18 FEB. 58



CIRCUIT DIAGRAM

.020 MAX. PRETRAVEL

±.015  
 .625  
 OPERATING POSITION

±.002  
 -.001  
 .140

±.010  
 .917  
 .094 DIA.  
 ±.002  
 -.001  
 .140 DIA. HOLE

.58  
 .59

.21  
 .46

.172 DIA.

1.000  
 (SEE NOTE 1)  
 .47

6-32 UNC X .218<sup>REF.</sup> BINDER  
 HEAD TERMINAL SCREWS AND  
 LOCKWASHER (SEMS)

1.94

.16  
 .36  
 ±.010  
 .687

.68 .17

NOTE -

- 1- MOUNTING HOLES WILL ACCEPT PINS OR SCREWS OF .139 MAX. DIA. ON 1.000 ±.002 CENTERS.
- 2- SUITABLE ONLY FOR APPLICATIONS IMPARTING A RAPID STROKE TO THE SWITCH PLUNGER.

THIS DRAWING COVERS A PROPRIETARY ITEM AND IS THE PROPERTY OF MICRO SWITCH, A DIVISION OF HONEYWELL. THIS DRAWING IS NOT TO BE COPIED OR USED WITHOUT THE APPROVAL OF MICRO SWITCH.

CHARACTERISTICS

OPERATING FORCE ----- 14-24 OZ  
 RELEASE FORCE ----- 4 OZ. MIN.  
 DIFFERENTIAL TRAVEL----- .001-.0035  
 OVERTRAVEL ----- .005 MIN.

ELECTRICAL DATA

CONTACT ARRANGEMENT  
 (SEE CIRCUIT DIAGRAM)

UNDERWRITERS' LAB. INC. LISTED RATING  
 15 A-125, 250, OR 480 VAC  
 1 A-125 VDC; 0.5 A-250 VDC  
 1/4 HP-125 VAC; 1/2 HP-250 VAC

(A) (C)



SCALE FULL

DO NOT SCALE PRINT

UNLESS OTHERWISE SPECIFIED

DIMENSIONS ARE IN INCHES  
**TOLERANCES ARE:**  
 ONE PLACE (.0) ±.030  
 TWO PLACE (.00) ±.015  
 THREE PLACE (.000) ±.005  
 ANGLES ±

WEIGHT