

MICRO SWITCH
a Honeywell Division

FED. MFG. CODE 91 929

SWITCH - BASIC

CATALOG LISTING

BZ-2RW8055516T

AQB0037

REPLACES X94427-BZ

M BZ-2RW8055516T

PAGE 1 OF 1

RELEASE NO. PR-19660

DRAWING NUMBER

4

ISSUE

CHECK

CHECK

09JAN06

RJ

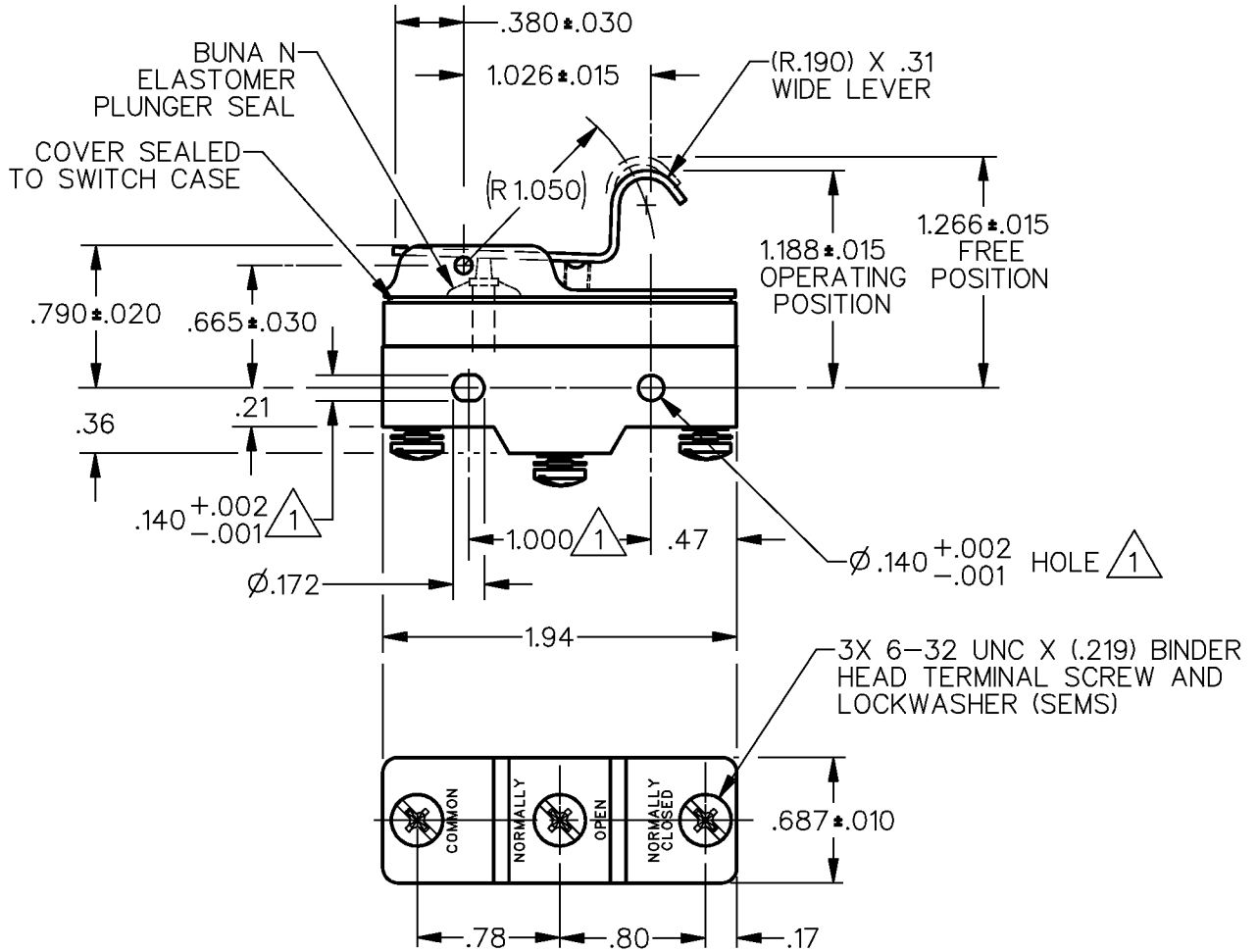
CHECK

09JAN92

CHECK

3 JAN 92

DDM/CAD

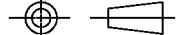


- NOTES:
 1 MOUNTING HOLES WILL ACCEPT PINS OR SCREWS OF .139 MAX DIA ON 1.000 ±.002 CENTERS
 2 - SEALED CONSTRUCTION PROVIDES SPLASH RESISTANCE

ANSI Y14.5M-1982 APPLIES

THIS DRAWING COVERS A PROPRIETARY ITEM AND IS THE PROPERTY OF MICRO SWITCH, A DIVISION OF HONEYWELL. THIS DRAWING IS NOT TO BE COPIED OR USED WITHOUT THE APPROVAL OF MICRO SWITCH.

THIRD ANGLE PROJECTION



CHARACTERISTICS	ELECTRICAL DATA	SCALE	FULL	DO NOT SCALE PRINT
		UNLESS OTHERWISE SPECIFIED TOLERANCES ARE		
OPERATING FORCE -----6 OZ MAX	CONTACT ARRANGEMENT S P D T	ONE PLACE	(.0)	±.030
RELEASE FORCE -----1 1/2 OZ MIN	L96	TWO PLACE	(.00)	±.015
DIFFERENTIAL TRAVEL -----.003-.020	15A 125, 250 OR 480 VAC 1/8HP 125 VAC, 1/4HP 250 VAC 1/2A 125 VDC, 1/4A 250 VDC	THREE PLACE	(.000)	±.005
OVERTRAVEL -----.094 MIN	L288 L306 L315	ANGLES		±
	CE 05	WEIGHT		
	16A 250V ~ T85 5E4			