

MICRO SWITCH

A DIVISION OF MINNEAPOLIS-HONEYWELL REGULATOR COMPANY
MINNEAPOLIS, MINNESOTA

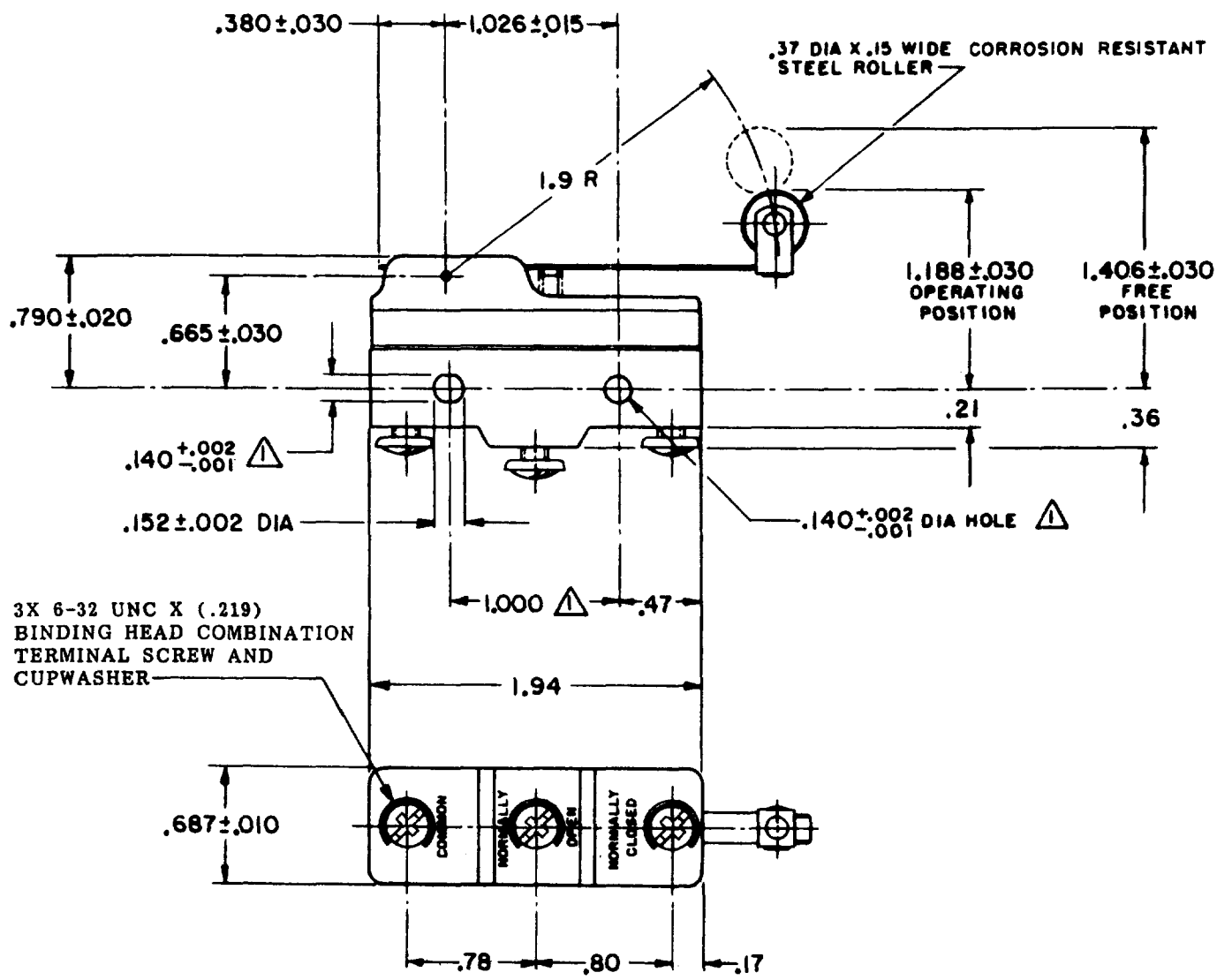
FED. MFR. CODE 91929

SWITCH - BASIC

CATALOG LISTING

BZ-2RW82244-A2

CATALOG LISTING
BZ-2RW82244-A2
 PAGE 1 OF 1
M
 ISSUE 8
 REVISIONS
 A CO 16736
 S C H 27 MAR 62
 B C034804
 P K
 MAY 75
 C C034308
 O J W
 17 JUL 75
 O 73287-J
 J A L 22 NOV 93
 E C093346
 D L T 28 AUG 98
 F 203296
 C S I 13 JUN 01
 CHECK DAW 16 APR 62
 CHECK DAW 27 MAR 62
 G C H
 DRAWN
 FO-90378
 RASTER



- NOTES**
- △ - MOUNTING HOLES WILL ACCEPT PINS OR SCREWS OF .139 MAX DIA ON 1.000 ± .002 CENTERS
 - 2 - SWITCH WILL WITHSTAND TEMPERATURE OF 400° F FOR 100 HOURS

THIS DRAWING COVERS A PROPRIETARY ITEM AND IS THE PROPERTY OF MICRO SWITCH, A DIVISION OF MINNEAPOLIS-HONEYWELL REGULATOR CO. THIS DRAWING IS NOT TO BE COPIED OR USED WITHOUT THE APPROVAL OF MICRO SWITCH.

CHARACTERISTICS

OPERATING FORCE ----- 3 1/2 OZ MAX
 RELEASE FORCE ----- 3/4 OZ MIN
 DIFFERENTIAL TRAVEL ----- .015-.040
 OVERTRAVEL ----- .156 MIN

ELECTRICAL DATA

CONTACT ARRANGEMENT
 S P D T

UNDERWRITERS' LAB. INC. LISTED RATINGS
 5 A-125, 250 OR 400 VAC
 -L35- 1/2 A-125 VDC; 1/4 A-250 VDC
 -L288-

SCALE FULL

DO NOT SCALE PRINT

UNLESS OTHERWISE SPECIFIED
 DIMENSIONS ARE IN INCHES
TOLERANCES ARE:

| | | |
|-------------|--------|-------|
| ONE PLACE | (.0) | ±.050 |
| TWO PLACE | (.00) | ±.015 |
| THREE PLACE | (.000) | ±.005 |
| ANGLES | | ± |

WEIGHT .076 LB



