

MICRO SWITCH

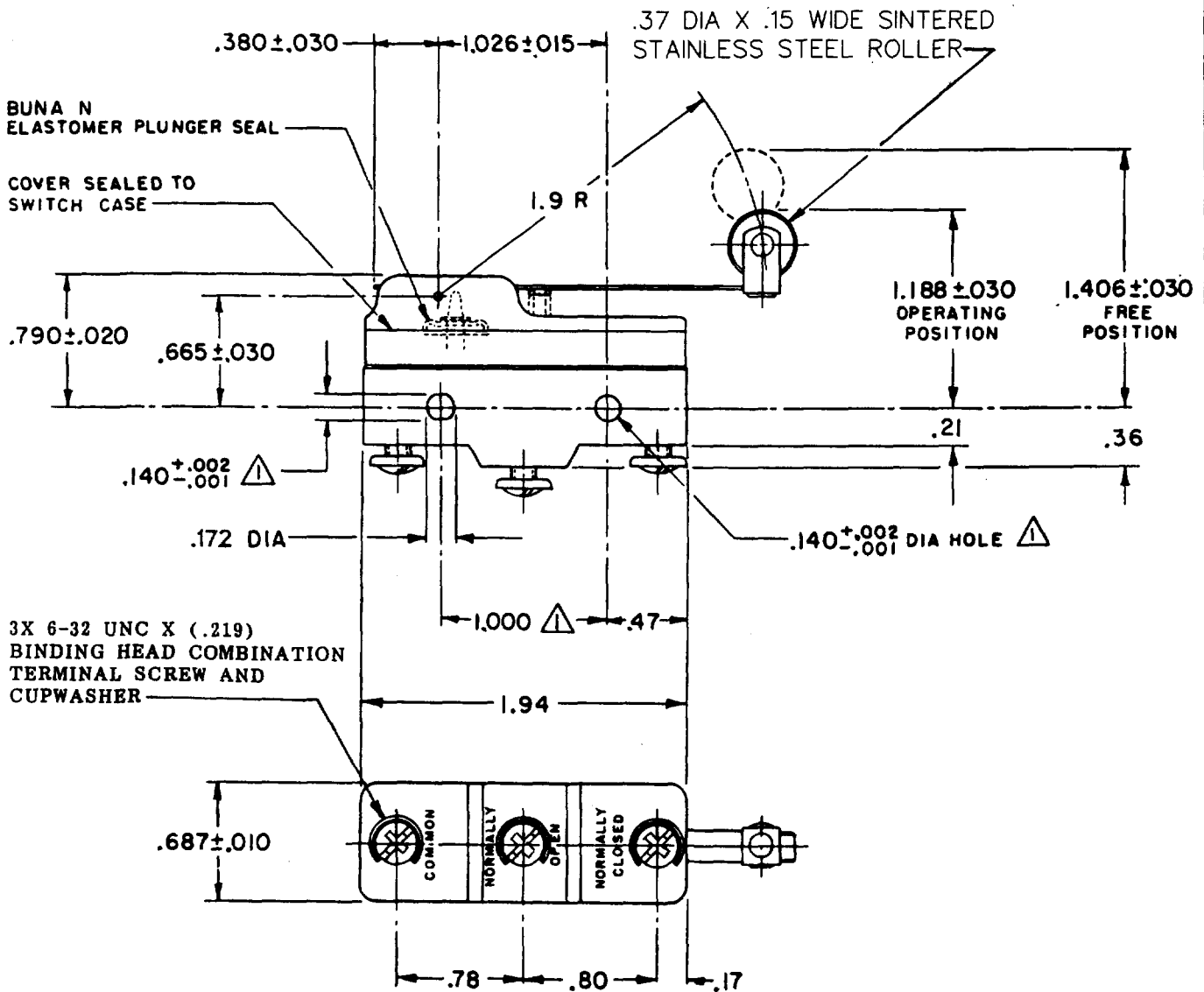
FREERPORT ILLINOIS, U.S.A
A DIVISION OF HONEYWELL
FED. MFG. CODE 91929

SWITCH-BASIC

CATALOG LISTING

BZ-2RW8255-A2-S

BZ-2RW8255-A2-S
 PAGE 1 OF 1
 RELEASE NO. PR-6725
 DRAWING NUMBER
 ISSUE
 REVISIONS
 A CO 39621 T M M 16 DEC 77
 B C067209 J A P 3 MAY 90
 C CO-73287-J J A L 22 NOV 93
 D CO-75204B K D R 1 FEB 94
 E CO-77588 K D R 29 MAR 94
 F C093346 D L T 11 SEP 98
 FORMTEK
 FO-52848-A
 1 DRAWN
 T M M 12 OCT 77 CHECK
 G L H 17 OCT 77 CHECK

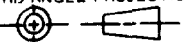


NOTES

- ▲ MOUNTING HOLES WILL ACCEPT PINS OR SCREWS OF .139 MAX DIA ON 1.000±.002 CENTERS
- 2 - SEALED CONSTRUCTION PROVIDES SPLASH RESISTANCE

THIS DRAWING COVERS A PROPRIETARY ITEM AND IS THE PROPERTY OF MICRO SWITCH, A DIVISION OF HONEYWELL. THIS DRAWING IS NOT TO BE COPIED OR USED WITHOUT THE APPROVAL OF MICRO SWITCH.

THIRD ANGLE PROJECTION



CHARACTERISTICS	
OPERATING FORCE	— 3 1/2 OZ MAX
RELEASE FORCE	— 3/4 OZ MIN
DIFFERENTIAL TRAVEL	— .004— .040
OVERTRAVEL	— .156 MIN

ELECTRICAL DATA	
CONTACT ARRANGEMENT S P D T	
L98 15A 125, 250 OR 480 VAC 1/8 HP 125 VAC, 1/4 HP 250 VAC 1/2A 125 VDC, 1/4A 250 VDC	
L288	
L299	
L306	
16A 250V ~ T85 5E4	

SCALE FULL			
DO NOT SCALE PRINT			
TOLERANCES			
APPLY TO DIMENSION UNITS. CONVERSIONS ARE ONLY FOR REFERENCE. UNLESS NOTED, TOLERANCES ARE 2			
	DIM. mm	TOL. mm/in	
NO PLACES	X	1/.04	
ONE PLACE	X.X	0.4/.016	X.X 0.8/.06
TWO PLACES	X.XX	0.18/.008	X.XX 0.38/.015
THREE PLACES	X.XXX		X.XXX 0.13/.005
ANGLES			
SI METRIC		US CUSTOMARY	
DESIGN UNITS		<input type="checkbox"/> SI METRIC <input checked="" type="checkbox"/> US CUSTOMARY	
WEIGHT .079 LB			