

MICRO SWITCH

FREEPORT ILLINOIS, U.S.A
A DIVISION OF HONEYWELL
FED. MFG. CODE 91929

SWITCH-BASIC

CATALOG LISTING

BZ-2RW8422-A2

BZ-2RW8422-A2

PAGE 1 OF 1

M

DRAWING NUMBER

ISSUE 14

REPLACES

RELEASE NO. PR-12596

CHECK

REVISIONS

A	CO-46317-3	SMA
B	RE-INST PR-12596	T SK
C	CO-54300	WJM
D	CO-70184-M	G R
E	CO-73287-J	J A L
F	CO-75204B	DAW
G	CO-77589	TSM
H	CO93346	D L T
J	CO93921	G J W

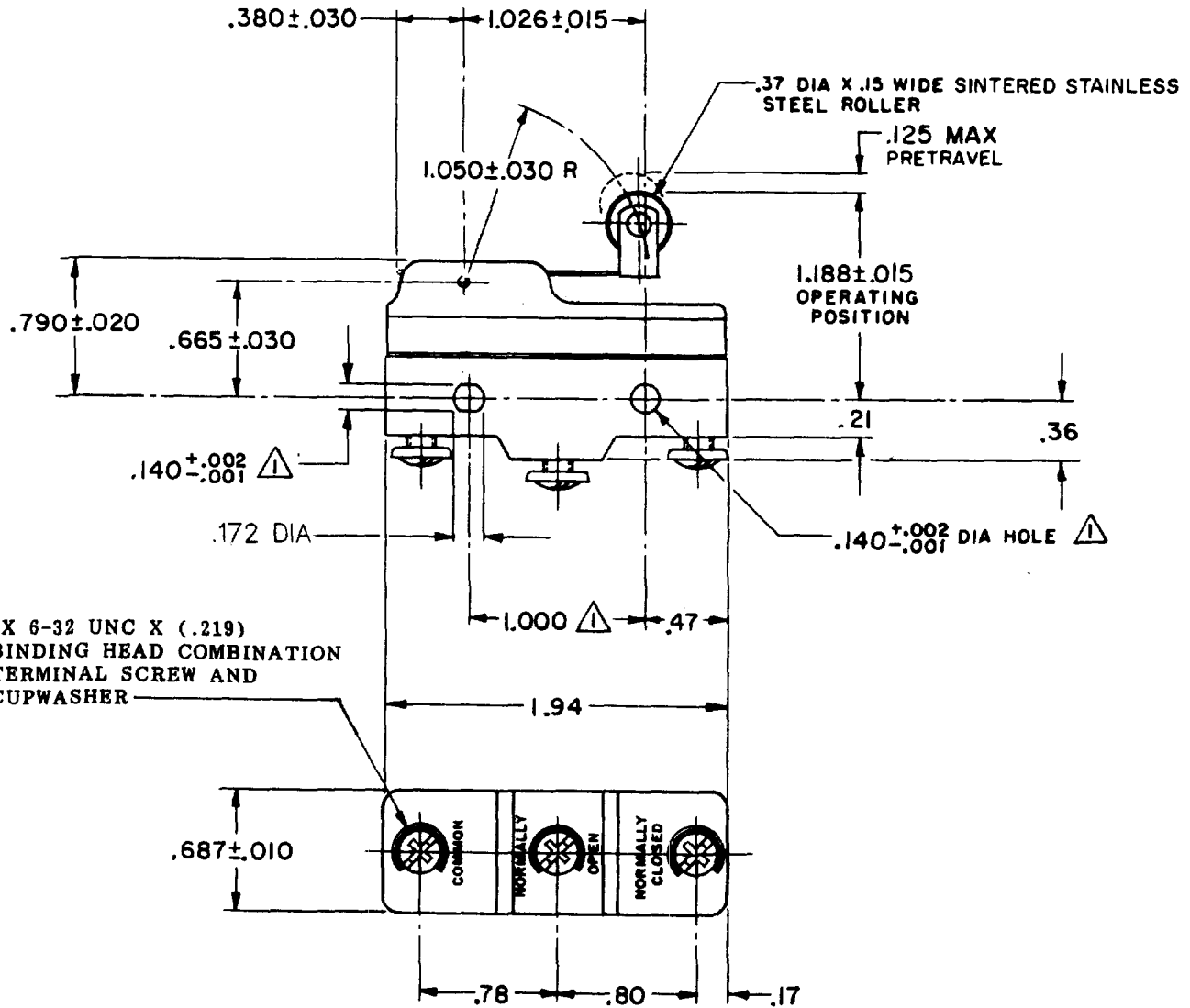
CHECK

30 NOV 83

CHECK

23 NOV 83

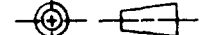
FORMTEK
FO-52848-A
DRAWN



NOTE
MOUNTING HOLES WILL ACCEPT PINS OR SCREWS OF .139 MAX DIA ON 1.000 ± .002 CENTERS

THIS DRAWING COVERS A PROPRIETARY ITEM AND IS THE PROPERTY OF MICRO SWITCH, A DIVISION OF HONEYWELL. THIS DRAWING IS NOT TO BE COPIED OR USED WITHOUT THE APPROVAL OF MICRO SWITCH.

THIRD ANGLE PROJECTION



CHARACTERISTICS

OPERATING FORCE - - - - - 2 1/2 OZ MAX
RELEASE FORCE - - - - - 1/4 OZ MIN
DIFFERENTIAL TRAVEL - - - - .003 - .020
OVERTRAVEL - - - - - .094 MIN

ELECTRICAL DATA

CONTACT ARRANGEMENT
S P D T
L96
15A 125, 250 OR 480 VAC
1/8 HP 125 VAC, 1/4 HP 250 VAC
1/2A 125 VDC, 1/4A 250 VDC
L288
L299
L306
CE D RU 3P
16A 250V ~ T85 5E4

SCALE FULL

DO NOT SCALE PRINT

TOLERANCES
APPLY TO DESIGN UNITS. CONVERSIONS ARE ONLY FOR REFERENCE. UNLESS NOTED, TOLERANCES ARE 2

	DIM.	TOL.	DIM.	TOL.
	mm	mm/in	in	mm/in
NO PLACES	X	17.04	X	0.07.03
ONE PLACE	X, X	0.47.016	X, X	0.367.015
TWO PLACES	X, XX	0.157.008	X, XX	0.137.008
THREE PLACES	X, XXX		X, XXX	
ANGLES				

DESIGN UNITS METRIC US CUSTOMARY

WEIGHT .076 LB