

MICRO SWITCH

A DIVISION OF MINNEAPOLIS-HONEYWELL REGULATOR COMPANY
 FREEPORT, MINNESOTA
 FED. MFR. CODE 91929

ACTUATOR-SWITCH

CATALOG LISTING

JE-50

JE-50

M

DRAWING NUMBER

8

X

ISSUE

84

REPLACES

RELEASE NO. S.R. 6347

CNT 3 Apr. 57

CHECK

1 Apr. 57

RED 1 Apr. 57

CHECK

8 Apr. 57

RLZ 8 Apr. 57

CHECK

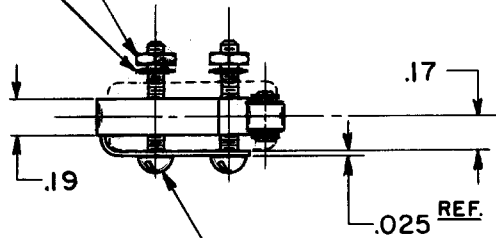
30 MARCH 57

K. A. F.

FO-80378

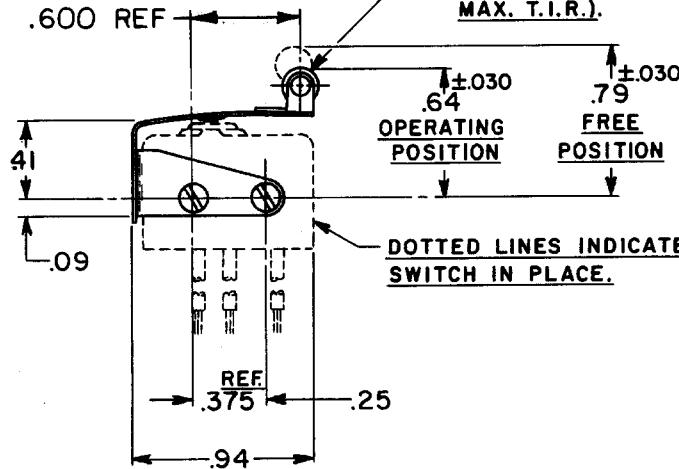
(2) 2-56 NC HEX. NUT

(2) LOCKWASHER



REF
 (2) 2-56 NC X .625 ROUND HEAD MACHINE SCREW

.19 DIA. X .19 WIDE CORROSION RESISTANT STEEL ROLLER (CONCENTRICITY .005 MAX. T.I.R.).



NOTE-
 1-SCREWS, NUTS, AND LOCKWASHERS FURNISHED UNASSEMBLED.

THIS DRAWING COVERS A PROPRIETARY ITEM AND IS THE PROPERTY OF MICRO SWITCH, A DIVISION OF HONEYWELL. THIS DRAWING IS NOT TO BE COPIED OR USED WITHOUT THE APPROVAL OF MICRO SWITCH.

CHARACTERISTICS (WITH ISEI BASIC SWITCH INSTALLED)

OPERATING FORCE ----- 12 OZ. MAX.
 RELEASE FORCE ----- 2 OZ. MIN.
 DIFFERENTIAL TRAVEL ----- .025 MAX.
 OVERTRAVEL ----- .015 MIN.

ELECTRICAL DATA

CONTACT ARRANGEMENT BREAK DISTANCE

SCALE - FULL

DO NOT SCALE PRINT

UNLESS OTHERWISE SPECIFIED
 DIMENSIONS ARE IN INCHES
TOLERANCES ARE:

ONE PLACE (.0) ±.030
 TWO PLACE (.00) ±.015
 THREE PLACE (.000) ±.005
 ANGLES ±

WEIGHT