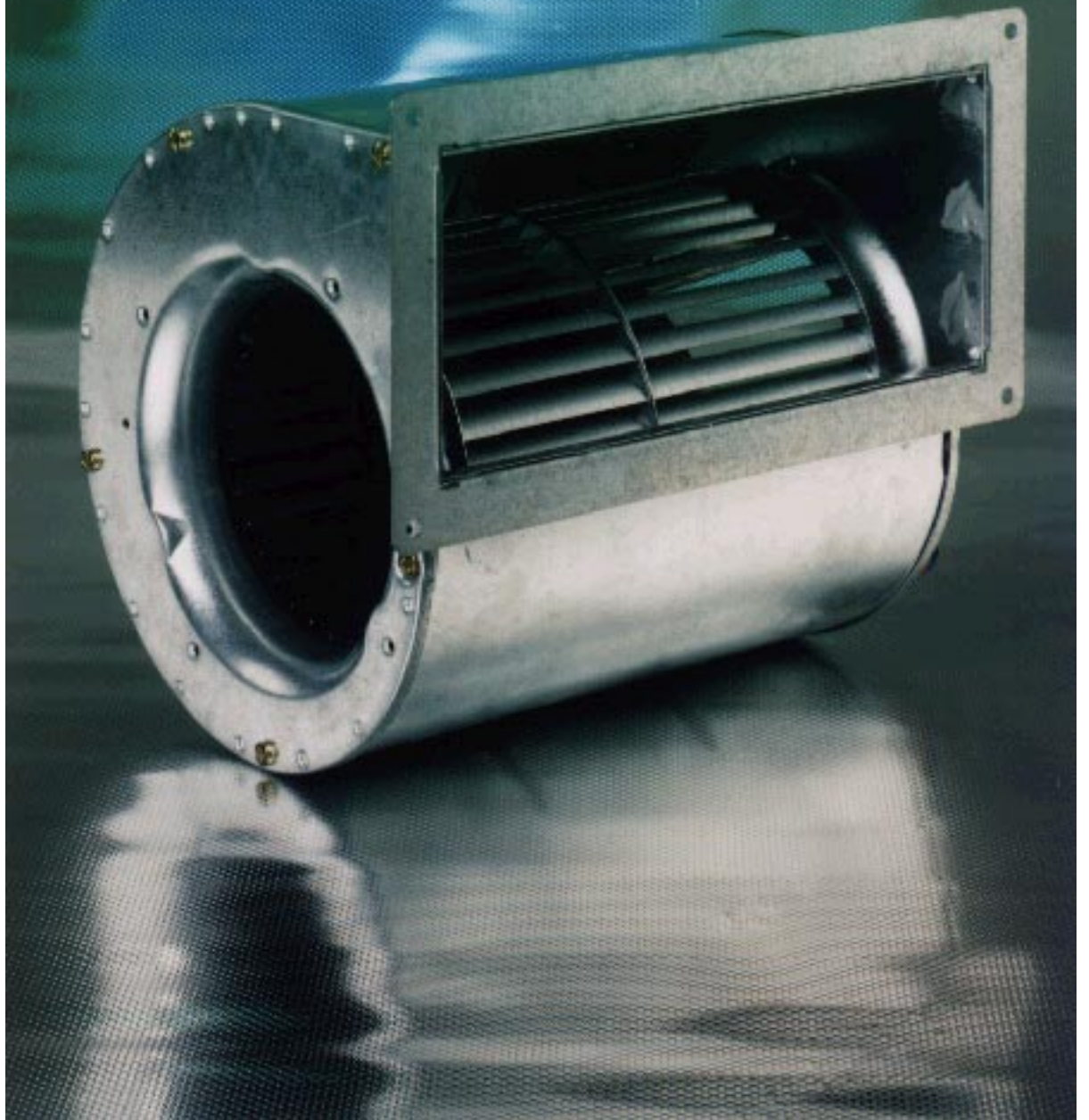
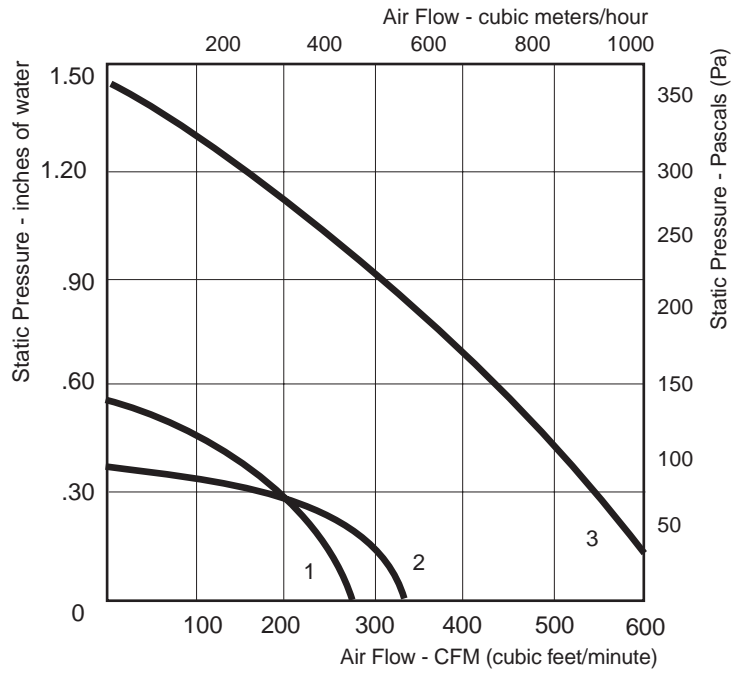


DC Dual Inlet Centrifugal Blowers



285 to 656 CFM Brushless DC Dual Inlet Centrifugal Blowers

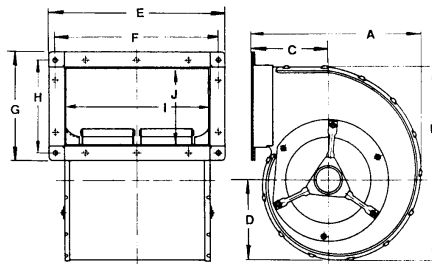


Curve Number	Part Number	Volts	Ref. Watts	Flange	Rota- tion*	CFM @ 0" dBA	Wgt. (lbs.)	Temp. Max. °C
1	D3G133-AB31-06	24	40	Yes	R	285 52	6.5	50
2	D3G133-DB05-05	48	34	No	R	335 54	6.5	50
3	D1G133-DC17-09	48	115	No	R	656 60	7.0	50

NOTE: Wiring connection: Red = +; Blue = -; Speed control by voltage typical range: +15% and - 30%.
 *Rotation, as viewed from side opposite lead exit: R = clockwise; L = counter-clockwise

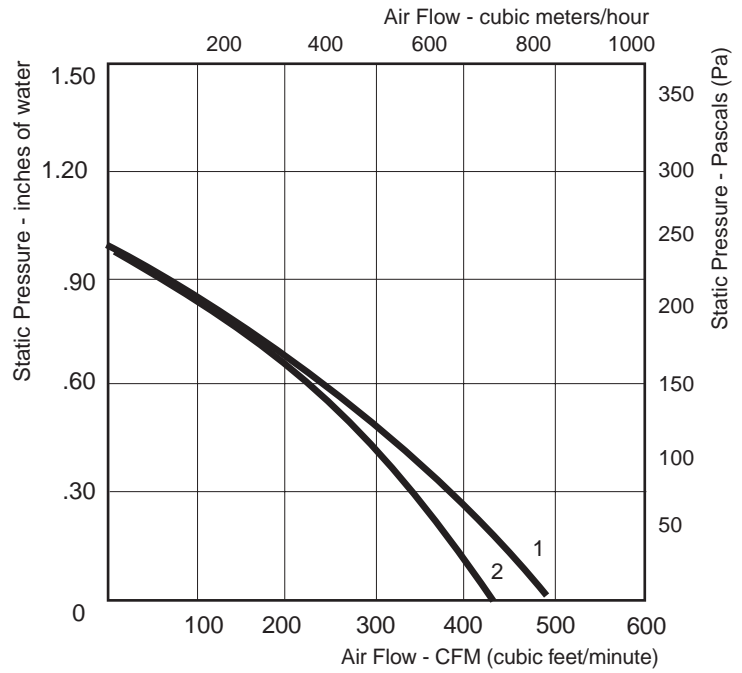
Consult an application engineer for additional models and voltages for your specific needs, 860-674-1515

Dimensions



Blower Type	Dimensions – [inches (mm)]									
	A	B	C	D	E	F	G	H	I	J
D3G133-AB	6.73 (171)	7.09 (180)	3.46 (88)	3.11 (79)	10.0 (254)	9.37 (238)	4.25 (108)	2.91 (74)	8.46 (215)	2.72 (69)
D3G133-DB/C	8.03 (204)	8.39 (213)	3.82 (97)	3.66 (93)	-	-	-	-	9.13 (232)	4.02 (102)

424 to 506 CFM Brushless DC Dual Inlet Centrifugal Blowers



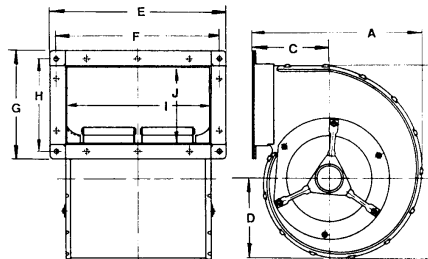
Curve Number	Part Number	Volts	Ref. Watts	Flange	Rotation*	CFM @ 0" dBA	Wgt. (lbs.)	Temp. Max. °C
1	D3G146-AA19-22	24	97.5	No	R	492 59	8.5	50
1	D3G146-AA05-21	48	86	Yes	R	506 58	8.5	50
2	D3G160-DA05-02	48	85	Yes	L	424 58	10.0	50

NOTE: Wiring connection: Red = +; Blue = —; Speed control by voltage typical range: +15% and – 30%.

*Rotation, as viewed from side opposite lead exit: R = clockwise; L = counter-clockwise

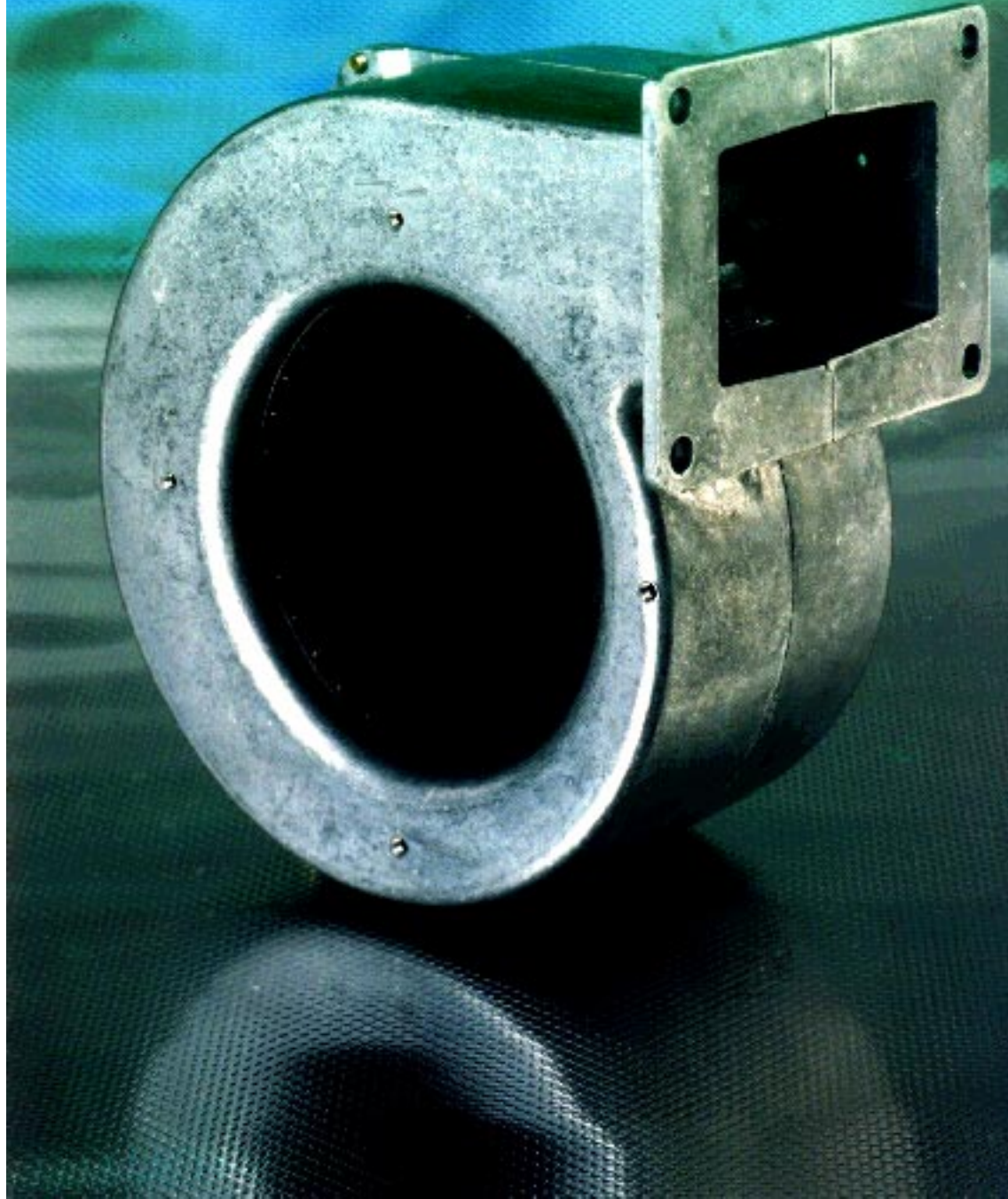
Consult an application engineer for additional models and voltages for your specific needs, 860-674-1515

Dimensions

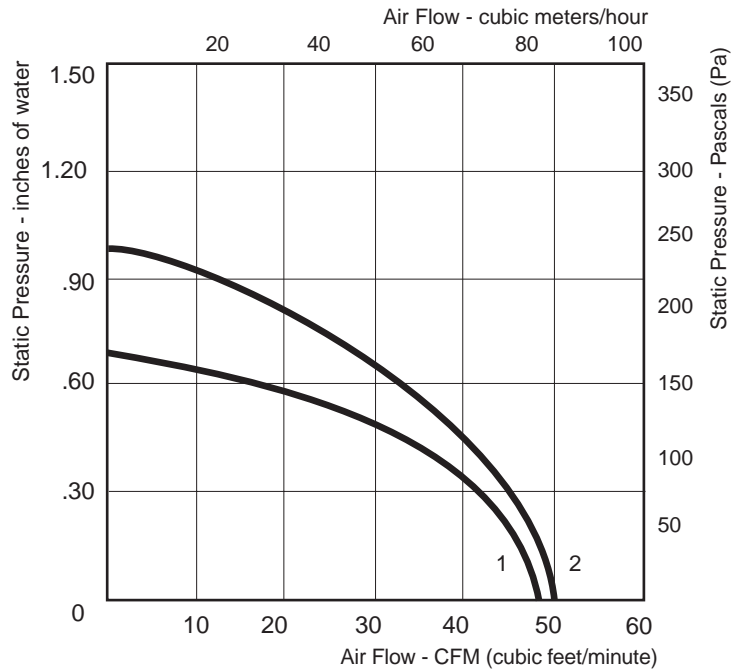


Blower Type	Dimensions – [inches (mm)]									
	A	B	C	D	E	F	G	H	I	J
D3G146-AA19-22	8.07 (205)	8.62 (219)	3.78 (96)	3.86 (98)	-	-	-	-	9.13 (232)	4.09 (104)
D3G146-AA05-21	8.11 (206)	8.62 (219)	3.82 (97)	3.86 (98)	10.63 (270)	10.0 (254)	5.59 (142)	4.96 (126)	9.13 (232)	4.02 (102)
D3G160-DA05-02	8.90 (226)	9.53 (242)	4.21 (107)	4.06 (103)	8.43 (214)	7.80 (198)	5.71 (145)	5.08 (129)	6.93 (176)	4.13 (105)

DC Single Inlet Centrifugal Blowers



47 to 53 CFM Brushless DC Single Inlet Centrifugal Blowers



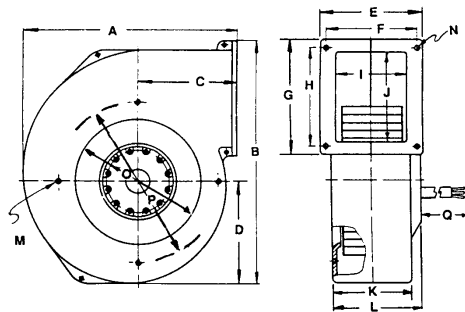
Curve Number	Part Number (Ball Bearings)	Volts	Ref. Watts	Flange	Rotation*	CFM @ 0" dBA	Wgt. (lbs.)	Temp. Max. °C
1	G2G085-AB04-01	12	10	Yes	R	47 52	2.0	65
1	G2G085-AB02-01	24	13	Yes	R	47 53	2.0	60
2	G2G097-AA26-09	12	17	No	R	50 57	2.0	65
2	G2G097-AA16-01	24	18	No	R	50 57	2.0	65
2	G2G097-AA22-01	48	19	No	R	53 58	2.0	65

NOTE: Wiring connection: Red = +; Blue = —; Speed control by voltage typical range: +15% and – 30%.

*Rotation, as viewed from inlet side: R = clockwise; L = counter-clockwise

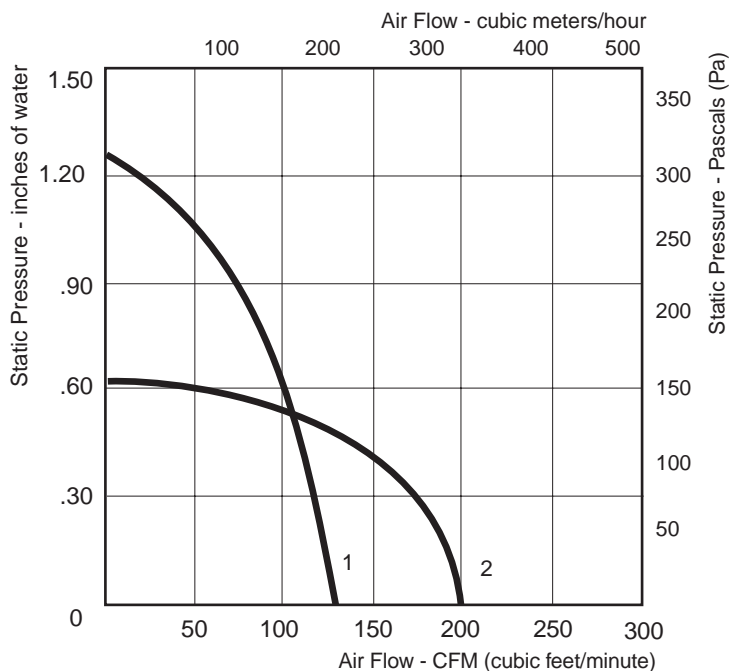
Consult an application engineer for additional models and voltages for your specific needs, 860-674-1515

Dimensions



Type	Dimensions – [inches (mm)]																
	A	B	C	D	E	F	G	H	I	J	K	L	M	N	O	P	Q
G2G085-AB	4.61 (117)	5.0 (127)	2.36 (60)	2.22 (56)	2.99 (76)	2.60 (66)	2.68 (68)	2.28 (58)	2.20 (56)	1.65 (42)	2.36 (60)	3.15 (80)	M4	.22 (5.5)	2.56 (65)	3.31 (84)	11.81 (300)
G2G097-AA	5.63 (143)	5.39 (137)	2.95 (75)	2.44 (62)	n/a	n/a	n/a	n/a	1.57 (40)	1.81 (46)	1.57 (40)	1.61 (41)	M4	n/a	3.15 (80)	3.78 (96)	17.72 (450)

130 to 203 CFM Brushless DC Single Inlet Centrifugal Blowers



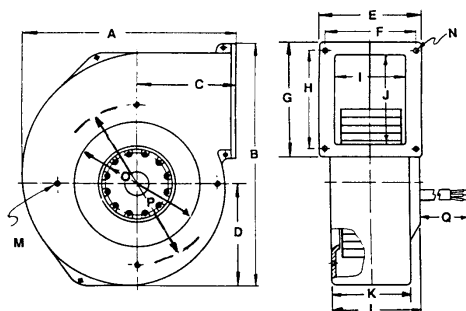
Curve Number	Part Number (Ball Bearings)	Volts	Ref. Watts	Flange	Rota- tion*	CFM @ 0"	dBA	Wgt. (lbs.)	Temp. Max. °C
1	G2G120-AR31-01	12	40	Yes	R	130	58	4.5	60
1	G2G120-AR75-01	24	40	Yes	R	130	58	4.5	60
2	G3G146-BF11-01	24	35	Yes	L	200	57	7.0	60

NOTE: Wiring connection: Red = +; Blue = -; Speed control by voltage typical range: +15% and - 30%.

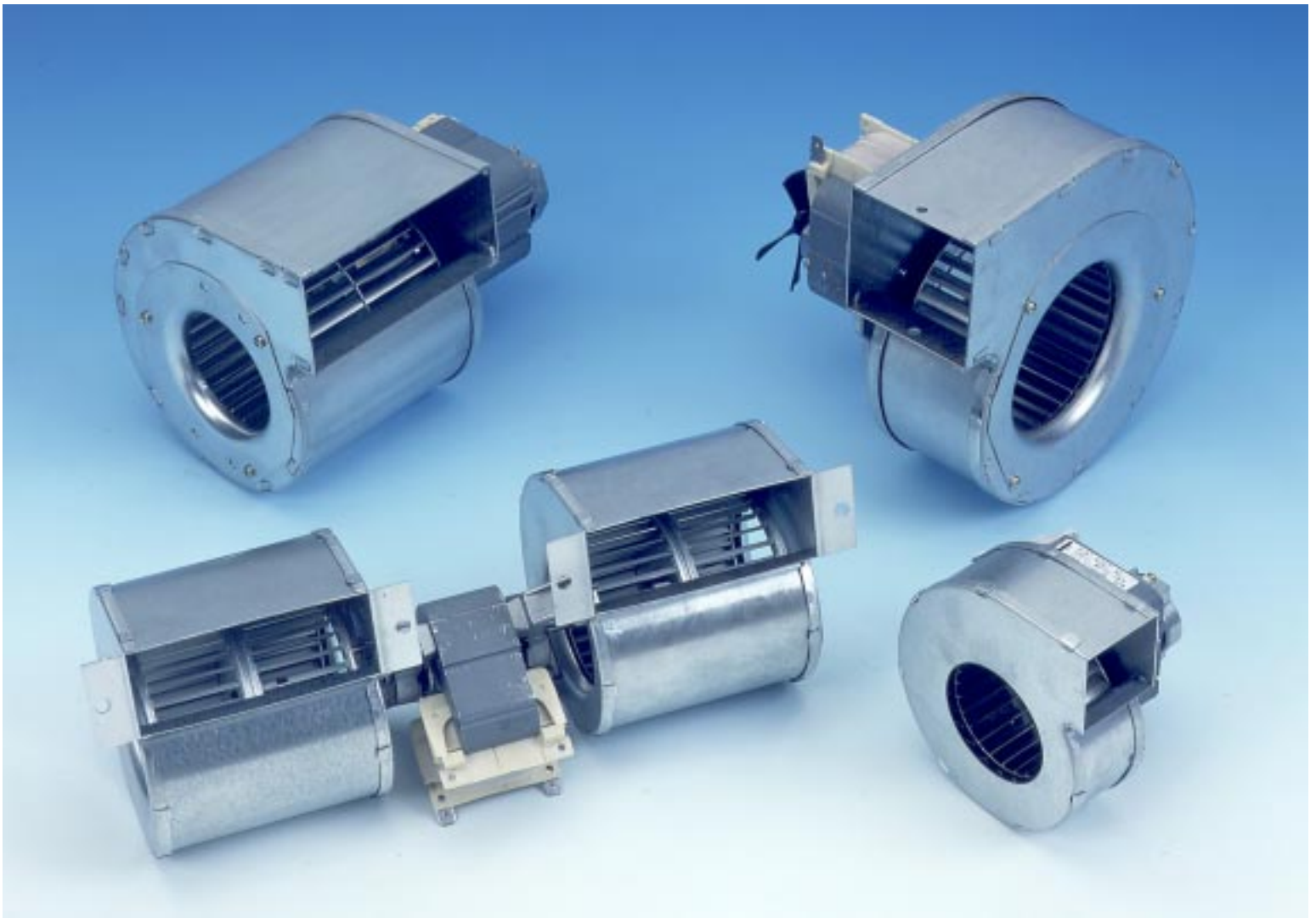
*Rotation, as viewed from inlet side: R = clockwise; L = counter-clockwise

Consult an application engineer for additional models and voltages for your specific needs, 860-674-1515

Dimensions



Type	Dimensions – [inches (mm)]																
	A	B	C	D	E	F	G	H	I	J	K	L	M	N	O	P	Q
G2G120-AR	6.85 (174)	7.48 (190)	3.23 (82)	3.23 (82)	4.53 (115)	3.94 (100)	3.27 (83)	2.68 (68)	2.99 (76)	1.97 (50)	3.23 (82)	3.86 (98)	M4	.28 (7)	3.94 (100)	5.20 (132)	17.72 (450)
G3G146-BF	8.90 (226)	10.28 (261)	4.06 (103)	4.21 (107)	5.12 (130)	4.53 (115)	4.72 (120)	4.13 (105)	3.70 (94)	3.62 (92)	3.94 (100)	4.84 (123)	M4	.25 (6)	4.92 (125)	6.22 (158)	17.72 (450)



Centrifugal Blowers

User benefits include:

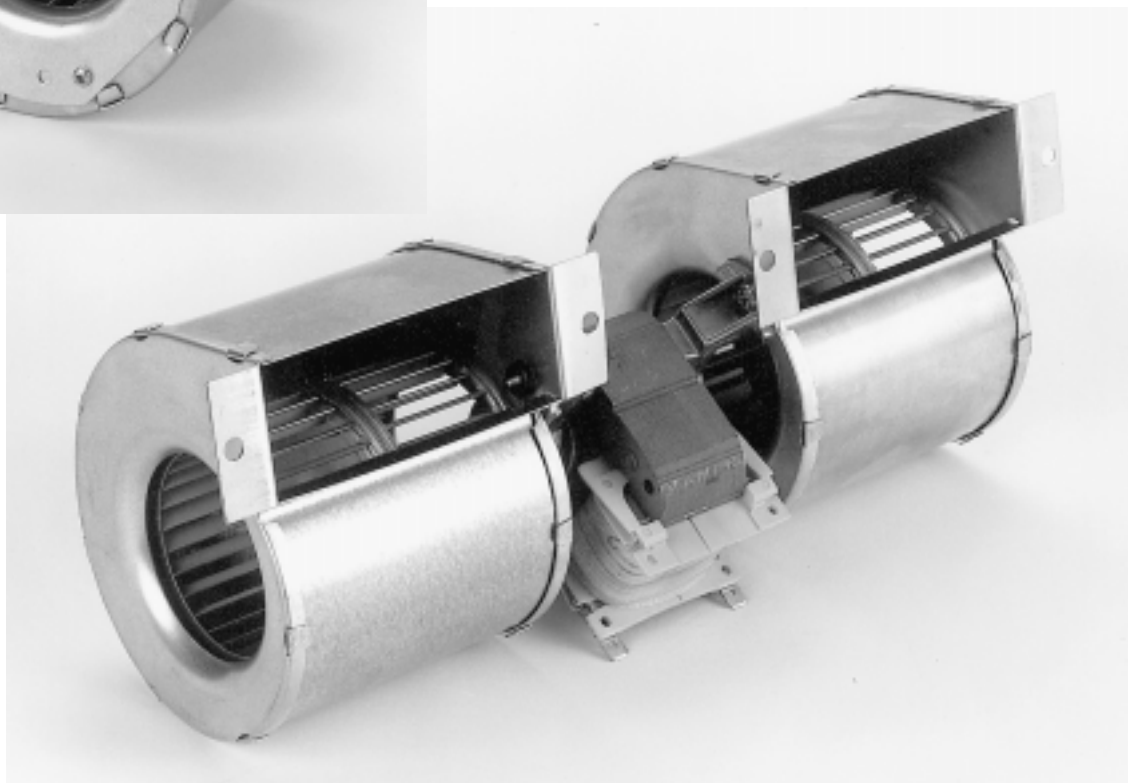
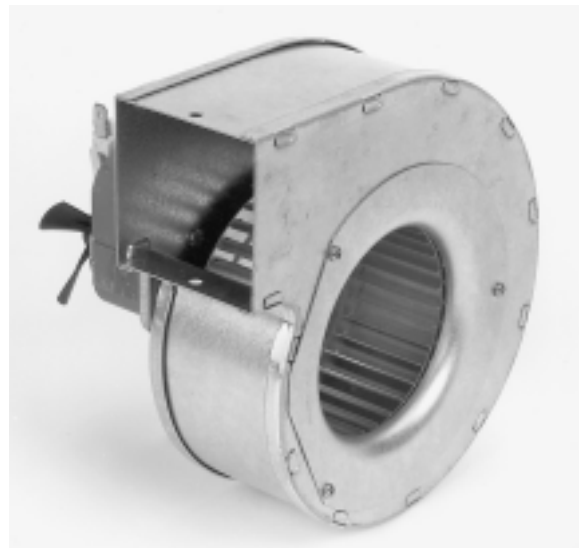
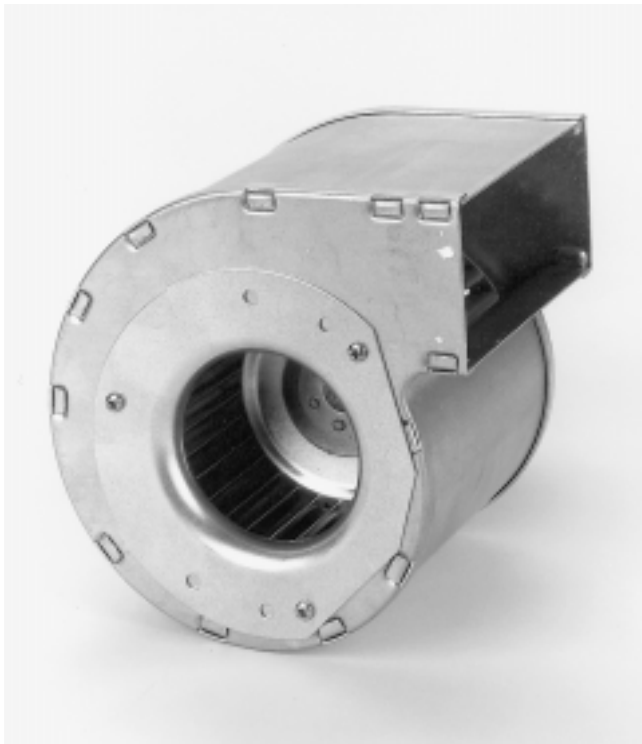
- Excellent air flows at higher output pressures
- Extremely stable pressure / volume characteristics
- High efficiency with either brushless DC or AC shaded-pole motors
- Low noise levels

Typical applications include:

- Induced draft blowers for heating equipment
- Inlet blowers for heating equipment where additional outside air is required
- Air conditioner blowers
- Dishwasher dryer blowers
- Cabinet and enclosure cooling
- Ventilation for fume hoods in cooking and processing applications
- Blowers for portable and storage heaters
- Specialized ventilation, extraction and exhaust applications

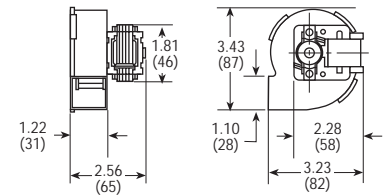
Centrifugal Blowers

SINGLE and DUAL INLET CENTRIFUGAL BLOWERS with a variety of impeller diameters, impeller widths and discharge openings, and motor positions to meet user needs and air moving requirements. Available with 115 or 230 volt AC shaded-pole motors, or with 12 or 24 volt brushless DC motors. Here's a compact, versatile answer when you need spot cooling, forced air input, or air movement against higher back pressures. Discuss your needs with one of our application engineers at 860-674-1515.

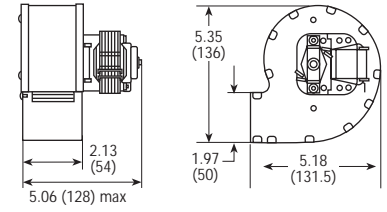


SINGLE INLET BLOWERS

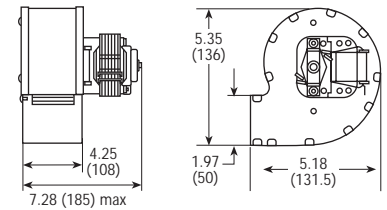
MODEL Series	CFM (@0")	Max. S.P. (in H ₂ O)	Volts	Hertz	Watts	Insul. Class	Motor Position
RL59/0024	12	0.27	115	60	5	B	Left
RL59/2400	12	0.27	115	60	5	B	Right



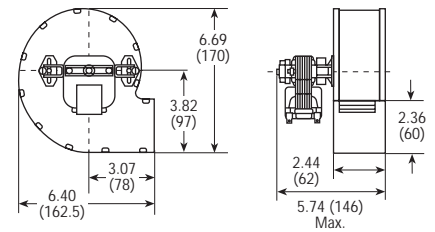
MODEL Series	CFM (@0")	Max. S.P. (in H ₂ O)	Volts	Hertz	Watts	Insul. Class	Motor Position
RL76/0042	51	0.54	115	60	19	B	Left
RL76/4200							Right
RL76/0086	108	0.62	115	60	50	B	Left
RL76/8600							Right



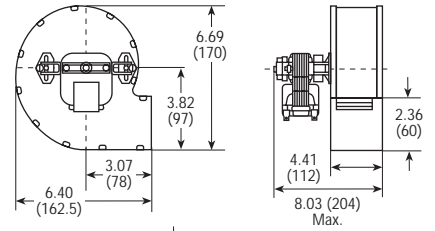
MODEL Series	CFM (@0")	Max. S.P. (in H ₂ O)	Volts	Hertz	Watts	Insul. Class	Motor Position
RL85/0042	68	0.68	115	60	45	B	Left
RL85/4200							Right
RL85/0086	127	0.76	115	60	65	B	Left
RL85/8600							Right



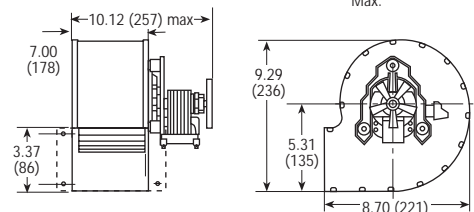
MODEL Series	CFM (@0")	Max. S.P. (in H ₂ O)	Volts	Hertz	Watts	Insul. Class	Motor Position
RL97/0042	87	0.88	115	60	51	B	Left
RL97/4200							Right
RL97/0086	136	1.10	115	60	86	B	Left
RL97/8600							Right



MODEL Series	CFM (@0")	Max. S.P. (in H ₂ O)	Volts	Hertz	Watts	Insul. Class	Motor Position
RL108/0042	102	1.10	115	60	76	B	Left
RL108/4200							Right

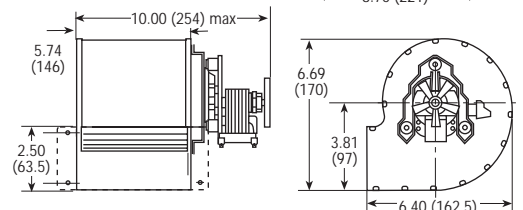


MODEL Series	CFM (@0")	Max. S.P. (in H ₂ O)	Volts	Hertz	Watts	Insul. Class	Motor Position
RL146/0062	138	0.44	115	60	38	B	Left
RL146/6200							Right



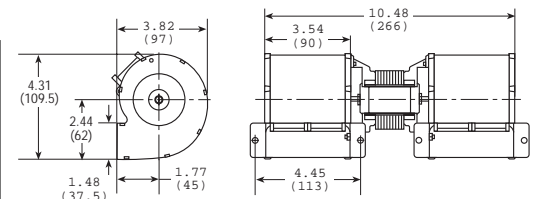
DUAL INLET BLOWER

MODEL Series	CFM (@0")	Max. S.P. (in H ₂ O)	Volts	Hertz	Watts	Insul. Class	Motor Position
RL97/12000	265	1.00	115	60	125	B	Right



TWIN BLOWERS

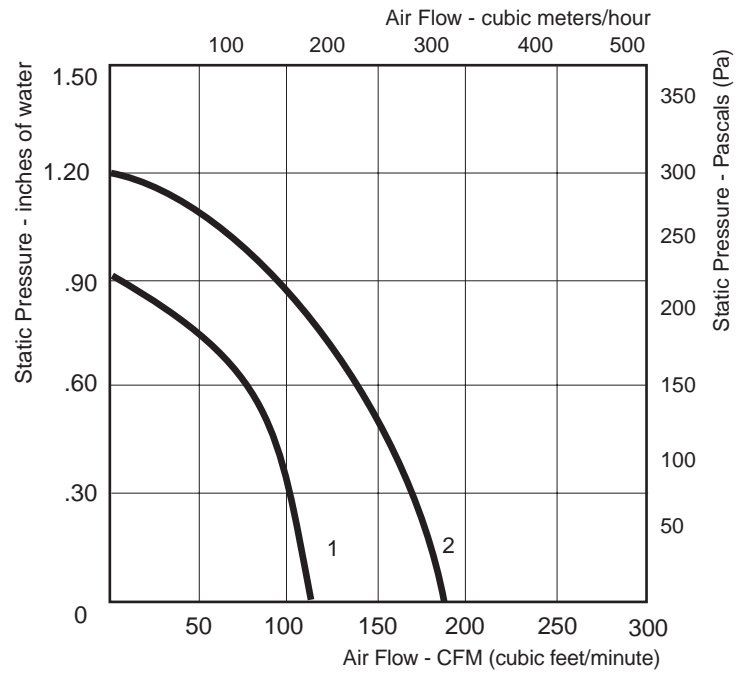
MODEL Series	CFM (@0")	Max. S.P. (in H ₂ O)	Volts	Hertz	Watts	Insul. Class	Motor Position
RLF67/7676A1-3030LH-486AFU	153	0.62	115	60	52	H	Center
RL97/1212	450	1.20	115	60	220	B	Center



AC Dual Inlet Centrifugal Blowers



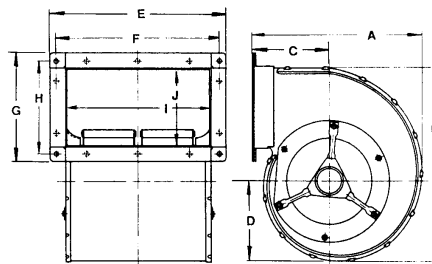
120 to 175 CFM, 115 & 230 Volt AC Dual Inlet Centrifugal Blowers



Curve Number	PART NUMBER	Volts	Hertz	Watts	Flange	Rotation**	CFM @ 0"	dBA	Temp. Max °C	Wgt. (lbs.)	Wiring Dgm#	Capacitor (µf)
1	D2E097-CB11-32	115	50/60	43	Yes	L	120	47	60	2.7	A	5
	D2E097-CB01-12	230	50/60	42	Yes	L	109	47	60	2.9	A	1.5
1	D2E097-CB11-26	115	60	43	No	L	120	47	60	2.7	A	5
	D2E097-CB01-02	230	50/60	42	No	L	109	47	60	2.9	A	1.5
2	D2E097-BE11-77	115	60	50	Yes	L	156	45	45	3.5	A	6
	D2E097-BE01-65	230	50/60	54	Yes	L	175	47	50	3.3	A	2

**Rotation as viewed from side opposite the lead exit: R = clockwise; L = counter-clockwise

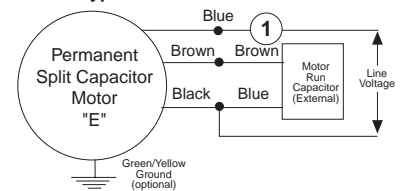
Dimensions



Type	Dimensions inches & (millimeters)									
	A	B	C	D	E	F	G	H	I	J
D2E097-CB	5.67 (144)	5.39 (137)	2.99 (76)	2.44 (62)	5.51 (140)	5.04 (128)	3.07 (78)	2.60 (66)	4.25 (108)	1.81 (46)
D2E097-BE	6.38 (162)	6.50 (165)	3.39 (86)	2.68 (68)	7.09 (180)	6.61 (168)	3.94 (100)	3.46 (88)	5.75 (146)	2.64 (67)

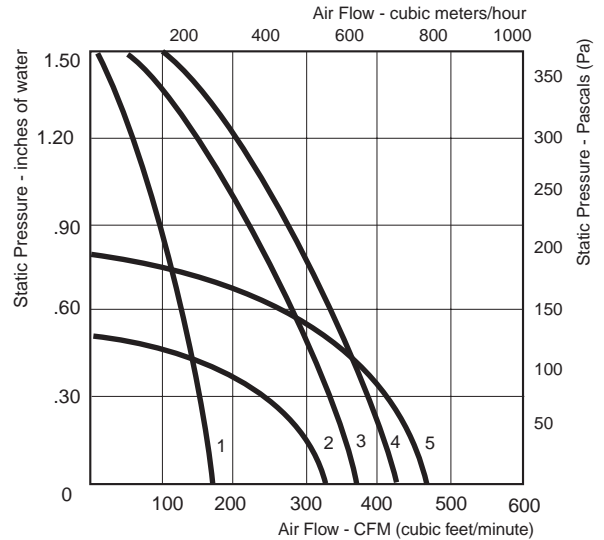
Wiring Diagram

A. PSC "Type E" Motor



① An extra capacitor can be connected in series to yield lower RPM for multi-speed requirements

180 to 460 CFM, 115 & 230 Volt AC Dual Inlet Centrifugal Blowers

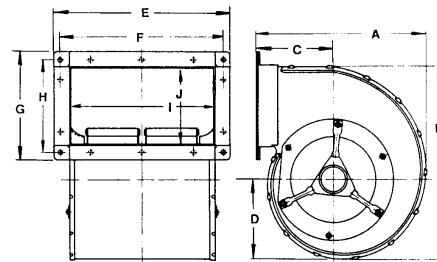


Curve Number	PART NUMBER	Volts	Hertz	Watts	Flange	Rotation**	CFM @ 0"	dBa	Temp. Max °C	Wgt. (lbs.)	Wiring Dgm#	Capacitor (µf)
1	D2E133-BE19-31	115	60	120	Yes	L	180	49	50	6.5	A	10
1	D2E133-BE17-31	230	60	110	Yes	L	180	49	50	6.5	A	2
2	D4E133-AA01-51	230	50/60	70	Yes	R	327	54	65	5.7	A	2
2	D4E133-AA01-01	230	50/60	70	No	R	327	54	65	5.7	A	2
3	D2E133-AB21-33	115	60	180	Yes	R	370	56	40	8.5	A	16
3	D2E133-AM47-23	230	50/60	190	Yes	R	300	56	40	7.7	A	3
3	D2E133-AB21-13	115	60	180	No	R	370	56	40	8.5	A	16
3	D2E133-AM47-01	230	50/60	190	No	R	300	56	40	7.7	A	3
4	D2E133-DB21-47	115	60	195	Yes	R	420	55	40	9.0	A	16
4	D2E133-DM47-23	230	50/60	195	Yes	R	353	55	40	9.7	A	3
4	D2E133-DB21-41	115	60	195	No	L	420	55	40	9.0	A	16
4	D2E133-DM47-01	230	50/60	195	No	R	353	55	40	9.7	A	3
5	D4E133-DB31-87	115	60	90	Yes	R	460	54	50	8.0	A	7
5	D4E133-DB01-51	230	50/60	95	Yes	R	460	54	50	8.4	A	2
5	D4E133-DB31-81	115	60	90	No	R	460	54	50	8.0	A	7
5	D4E133-DB01-01	230	50/60	95	No	R	460	54	50	8.4	A	2

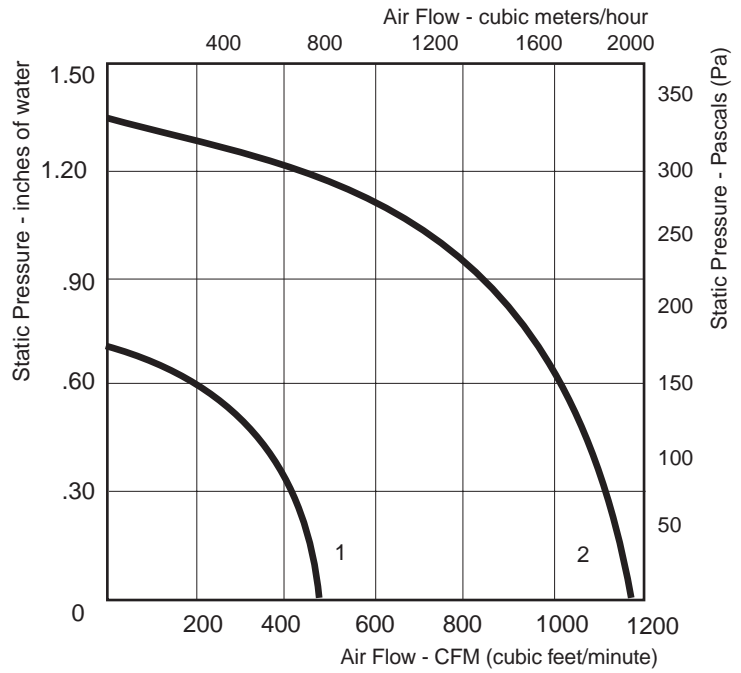
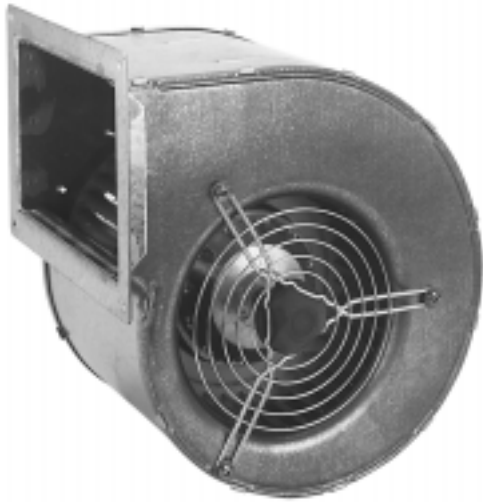
**Rotation as viewed from side opposite the lead exit: R = clockwise; L = counter-clockwise

Dimensions

Type	Dimensions inches & (millimeters)									
	A	B	C	D	E	F	G	H	I	J
D2E133-BE	6.73 (171)	7.09 (180)	3.46 (88)	3.15 (80)	7.63 (194)	7.01 (178)	4.25 (108)	3.62 (92)	6.10 (155)	2.72 (69)
D4E133-AA	6.73 (171)	7.09 (180)	3.46 (88)	2.99 (76)	10.0 (254)	9.37 (238)	4.25 (108)	3.62 (92)	8.46 (215)	2.72 (69)
D2E133-AB & AM	6.73 (171)	7.09 (180)	3.46 (88)	2.99 (76)	10.0 (254)	9.37 (238)	4.25 (108)	3.62 (92)	8.46 (215)	2.72 (69)
D2E133-DB & DM	8.03 (204)	8.39 (213)	3.82 (97)	3.86 (98)	10.63 (270)	10.0 (254)	5.59 (142)	4.96 (126)	9.13 (232)	4.02 (102)
D4E133-DB	8.03 (204)	8.39 (213)	3.82 (97)	3.86 (98)	10.63 (270)	10.0 (254)	5.59 (142)	4.96 (126)	9.13 (232)	4.02 (102)



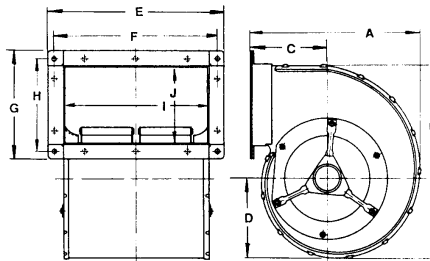
470 to 1180 CFM, 115 & 230 Volt AC Dual Inlet Centrifugal Blowers



Curve Number	PART NUMBER	Volts	Hertz	Watts	Flange	Rotation**	CFM @ 0"	dBA	Temp. Max °C	Wgt. (lbs.)	Wiring Dgm#	Capacitor (µf)
1	D4E146-AA25-34	115	60	128	Yes	L	450	55	60	7.7	A	8
1	D4E146-AA07-22	230	50/60	116	Yes	L	450	53	60	7.7	A	2
2	D4E180-BA04-18	115	60	480	Yes	L	1180	66	55	24.3	A	30
2	D4E180-BA02-02	230	50/60	460	Yes	L	1200	66	55	24.3	A	10

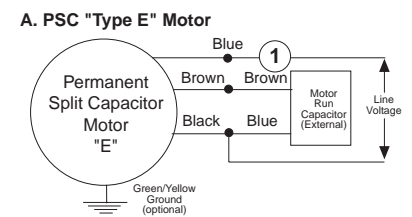
**Rotation as viewed from side opposite the lead exit: R = clockwise; L = counter-clockwise

Dimensions



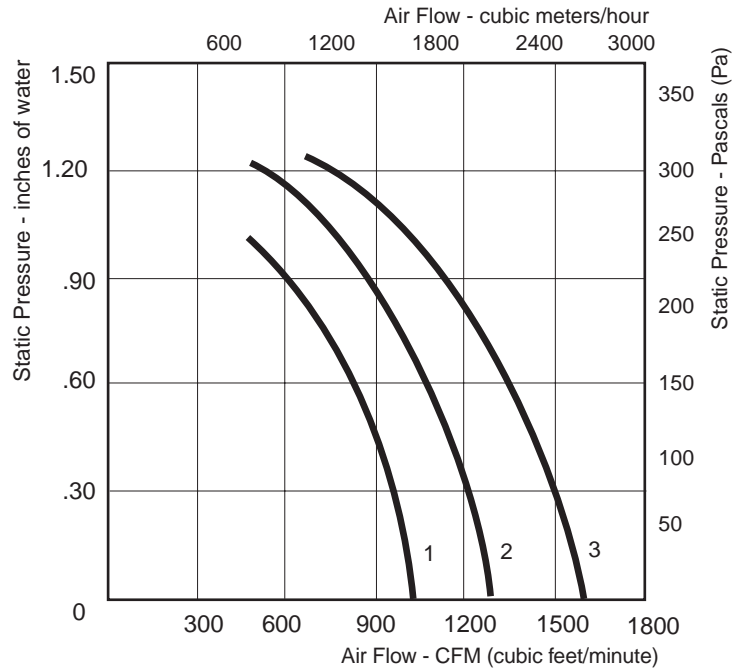
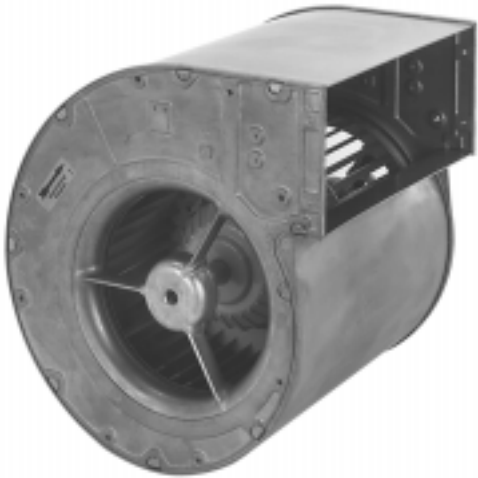
Type	Dimensions inches & (millimeters)									
	A	B	C	D	E	F	G	H	I	J
D4E146-AA	8.11 (206)	8.62 (219)	3.82 (97)	3.86 (98)	10.63 (270)	10.0 (254)	5.59 (142)	4.96 (126)	9.13 (232)	4.02 (102)
D4E180-BA	11.65 (296)	13.07 (332)	5.24 (133)	5.35 (136)	12.16 (309)	11.30 (287)	7.40 (188)	6.61 (168)	10.04 (255)	5.28 (134)

Wiring Diagram



① An extra capacitor can be connected in series to yield lower RPM for multi-speed requirements

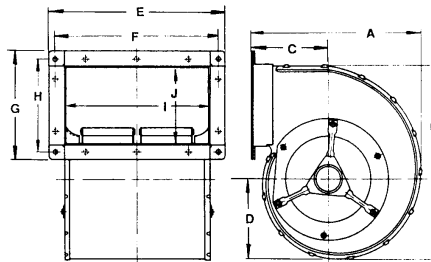
1050 to 1600 CFM , 115 & 230 Volt AC Dual Inlet Centrifugal Blowers



Curve Number	PART NUMBER	Volts	Hertz	Watts	Flange	Rotation**	CFM @ 0"	dBA	Temp. Max °C	Wgt. (lbs.)	Wiring Dgm#	Capacitor (µf)
1	RD20S-4/204174A	115	50/60	400	No	R	1050	n/a	40	22	C	12
1	RD20S-4/110006	230	50/60	400	No	R	1050	n/a	40	22	C	3
2	RD20S-4/210660	115	60	540	No	R	1275	n/a	40	28	C	35
2	RD20S-4/110007	230	60	540	No	R	1275	n/a	40	28	C	8
3	RD20S-4/210327	115	60	730	No	R	1600	n/a	40	33	C	40
3	RD20S-4/110008	230	60	730	No	R	1600	n/a	40	33	C	10

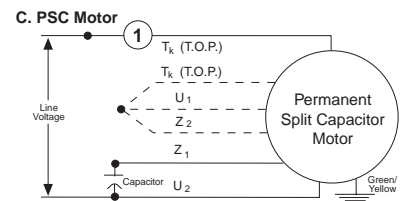
**Rotation as viewed from side opposite the lead exit: R = clockwise; L = counter-clockwise

Dimensions



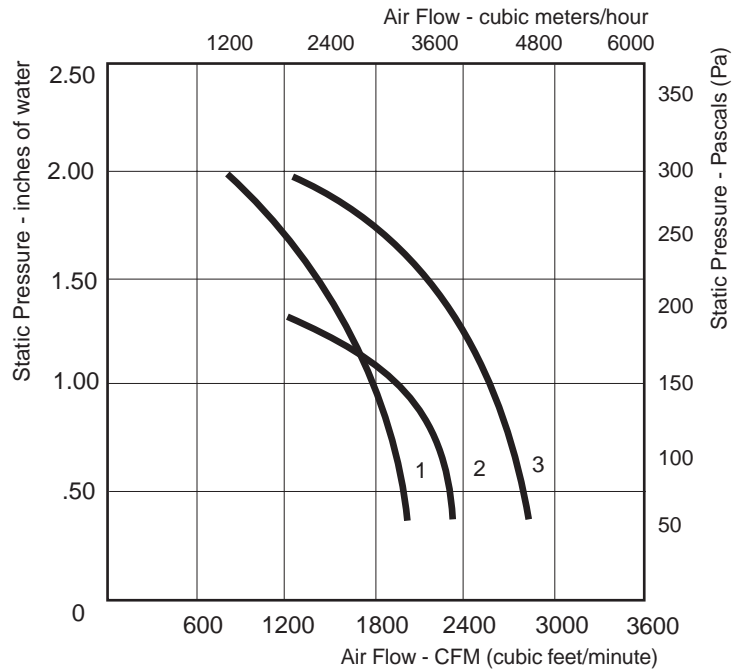
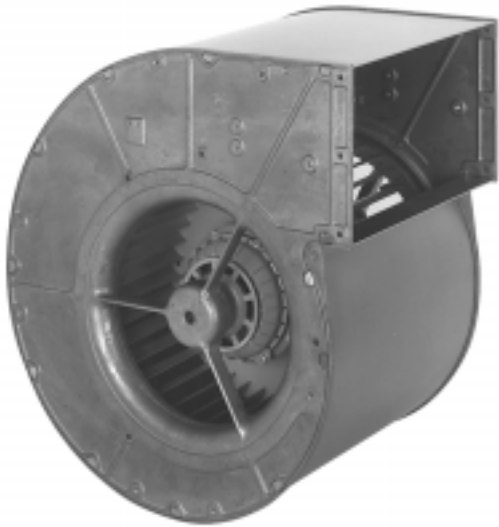
Type	Dimensions inches & (millimeters)									
	A	B	C	D	E	F	G	H	I	J
RD20S-4/204174A & 110006	12.36 (314)	13.58 (345)	5.59 (142)	5.83 (148)	n/a	n/a	n/a	n/a	11.50 (292)	5.0 (127)
RD20S-4/210660 & 110007	12.36 (314)	13.58 (345)	5.59 (142)	5.83 (148)	n/a	n/a	n/a	n/a	11.50 (292)	5.0 (127)
RD20S-4/210327 & 110008	12.36 (314)	13.58 (345)	5.59 (142)	5.83 (148)	n/a	n/a	n/a	n/a	14.88 (378)	5.0 (127)

Wiring Diagram



① An extra capacitor can be connected in series to yield lower RPM for multi-speed requirements. T_k leads are brown. U₁ & U₂ leads are blue. Z₁ & Z₂ leads are black. Dotted lines not supplied on all design.

2000 to 2800 CFM, 115 & 230 Volt AC Dual Inlet Centrifugal Blowers

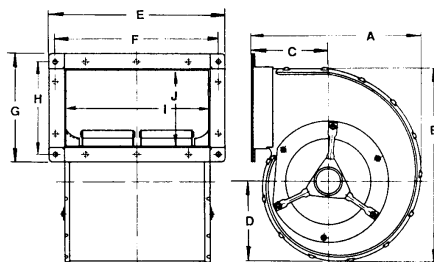


Curve Number	PART NUMBER	Volts	Hertz	Watts	Flange	Rotation**	CFM @ 0"	dBA	Temp. Max °C	Wgt. (lbs.)	Wiring Dgm#	Capacitor (µf)
1	RD25S-4/209061*	115	50/60	1150	No	R	2000*	n/a	40	40	C	60
1	RD25S-4/210311*	230	50/60	1100	No	R	2000*	n/a	40	40	C	14
3	RD25S-4/206198*	115	50/60	1800	No	R	2800*	n/a	40	44	C	90
3	RD25S-4/209718*	230	50/60	1800	No	R	2800*	n/a	40	44	C	20
2	RD28S-6/206708*	230	60	800	No	R	2350*	n/a	40	54	C	20

* Not to be run wide open - refer to performance curve.

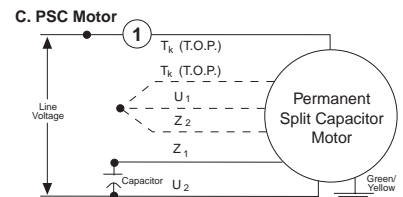
**Rotation as viewed from side opposite the lead exit: R = clockwise; L = counter-clockwise

Dimensions



Type	Dimensions inches & (millimeters)									
	A	B	C	D	E	F	G	H	I	J
RD25S-4/209061 & 210311	15.90 (404)	17.64 (448)	7.05 (179)	7.52 (191)	n/a	n/a	n/a	n/a	11.50 (292)	6.61 (168)
RD25S-4/206198 & 209718	15.90 (404)	17.64 (448)	7.05 (179)	7.52 (191)	n/a	n/a	n/a	n/a	14.88 (378)	6.61 (168)
RD28S-6/206708	18.50 (470)	20.59 (523)	8.15 (207)	8.78 (223)	n/a	n/a	n/a	n/a	14.88 (378)	7.72 (196)

Wiring Diagram

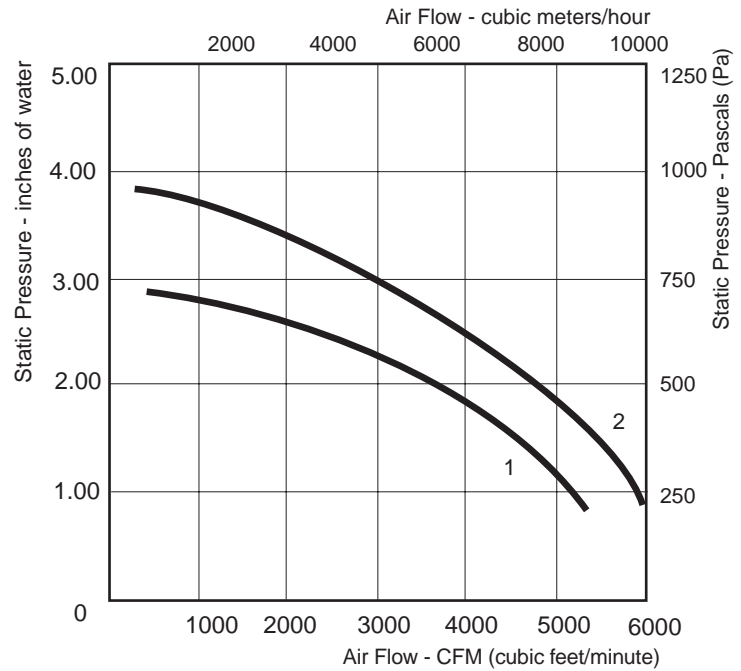
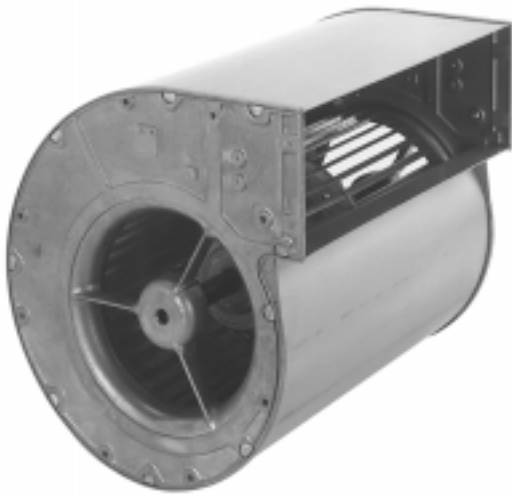


① An extra capacitor can be connected in series to yield lower RPM for multi-speed requirements
T_k leads are brown. U₁ & U₂ leads are blue. Z₁ & Z₂ leads are black. Dotted lines not supplied on all design.

FOR RD28S:

T_k leads are white. U₁ & U₂ leads are blue. Z₁ & Z₂ leads are brown. Ground is green/yellow

5300 to 6500 CFM, Three Phase AC Dual Inlet Centrifugal Blowers

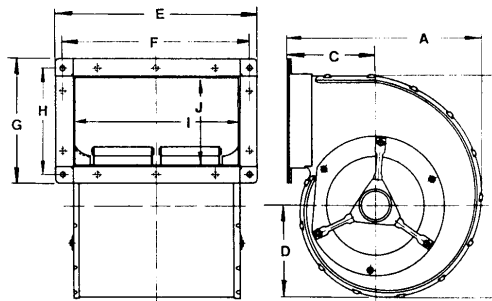


Curve Number	PART NUMBER	Volts	Watts	Flange	Rotation**	CFM @ 0"	dBA	Temp. Max °C	Wgt. (lbs.)
1	RD31P-4/207323*	440 3Ø	1100	No	R	5300*	n/a	40	40
2	RD35P-4/207334*	440 3Ø	980	No	R	6500*	n/a	40	44

* Not to be run wide open - refer to performance curve.

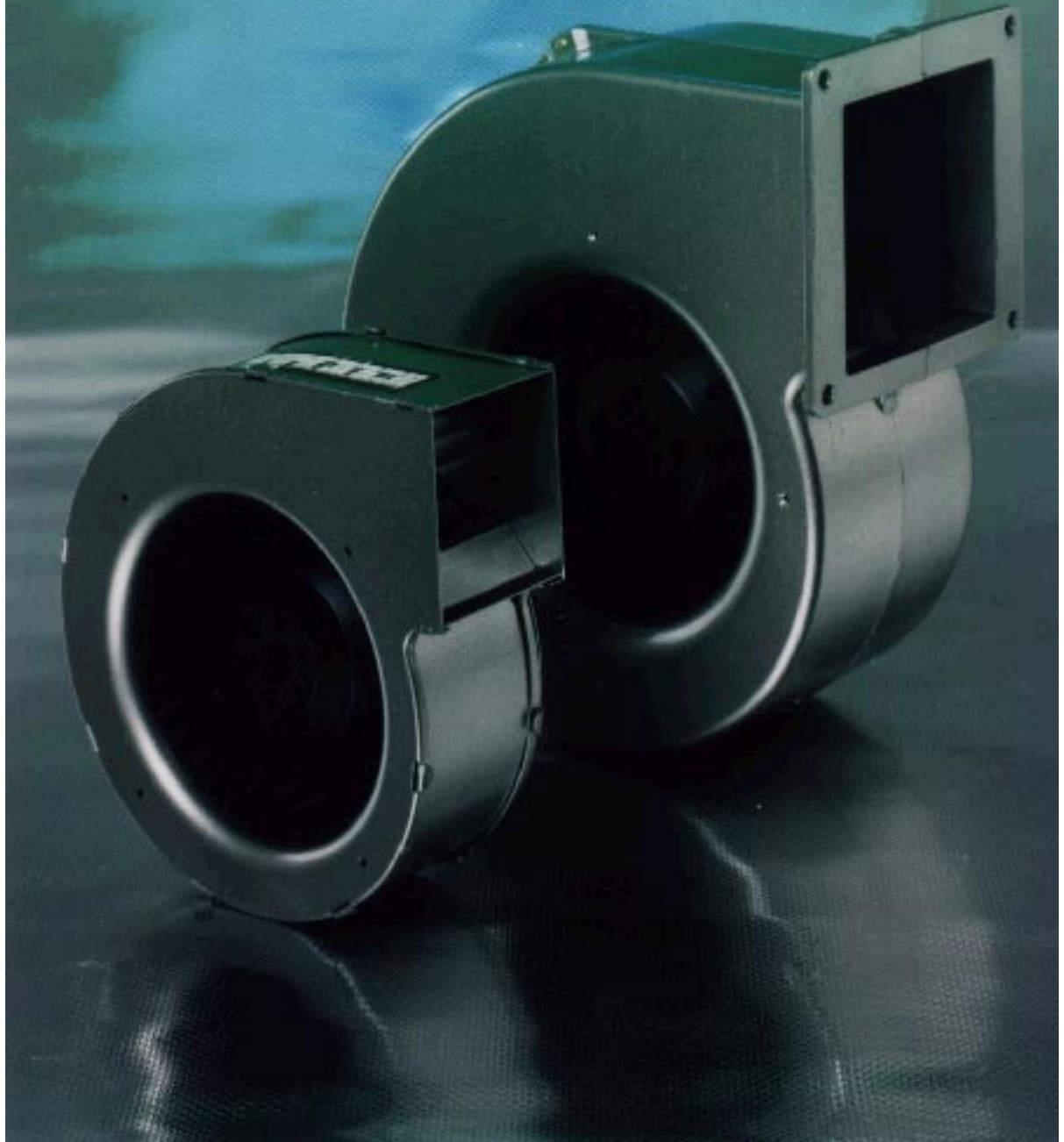
**Rotation as viewed from side opposite the lead exit: R = clockwise; L = counter-clockwise

Dimensions

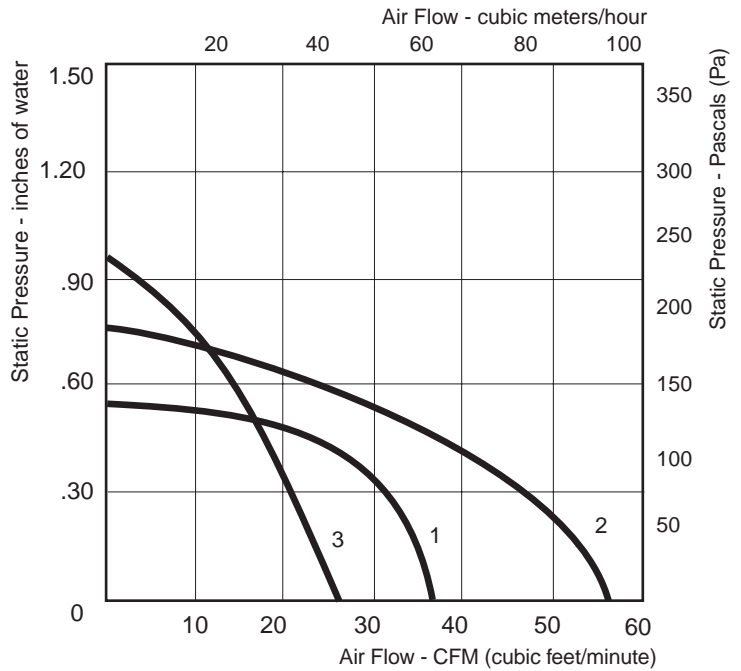
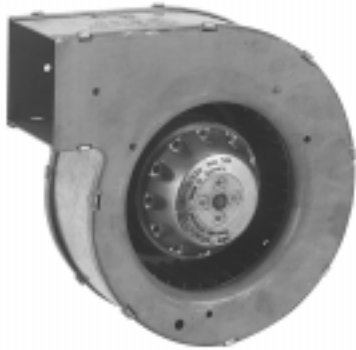


Type	Dimensions inches & (millimeters)									
	A	B	C	D	E	F	G	H	I	J
RD31P-4/207323	20.31 (516)	23.74 (603)	8.66 (220)	10.16 (258)	n/a	n/a	n/a	n/a	15.94 (405)	n/a
RD35P-4/207334	22.68 (576)	26.54 (674)	10.28 (261)	10.78 (274)	n/a	n/a	n/a	n/a	17.87 (454)	n/a

AC Single Inlet Centrifugal Blowers



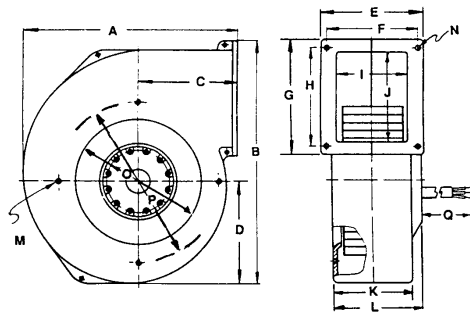
37 to 56 CFM, 115 & 230 Volt AC Single Inlet Centrifugal Blowers



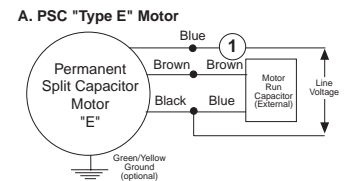
Curve Number	Part Number	Volts	Hertz	Watts	Flange	Rotation**	CFM @ 0"	dBA	Temp. Max °C	Wgt. (lbs.)	Wiring Dgm#	Capacitor (µf)
1	G2S085-AA19-15	115	50/60	22	Yes	R	31	37	60	1.8	B	-
1	G2S085-AA03-01	230	50/60	22	Yes	R	31	37	60	1.8	B	-
2	G2E085-AA05-21	115	60	28	Yes	R	56	57	70	1.7	A	4
2	G2E085-AA01-05	230	50/60	28	Yes	R	56	57	70	1.7	A	1
3	G2S097-DB61-08	115	50/60	23	No	R	26	37	55	1.8	B	-
3	G2S097-DB03-01	230	50/60	23	No	R	26	37	55	1.8	B	-

**Rotation as viewed from side opposite the lead exit: R = clockwise; L = counter-clockwise

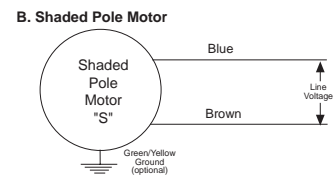
Dimensions



Wiring Diagrams



① An extra capacitor can be connected in series to yield lower RPM for multi-speed requirements

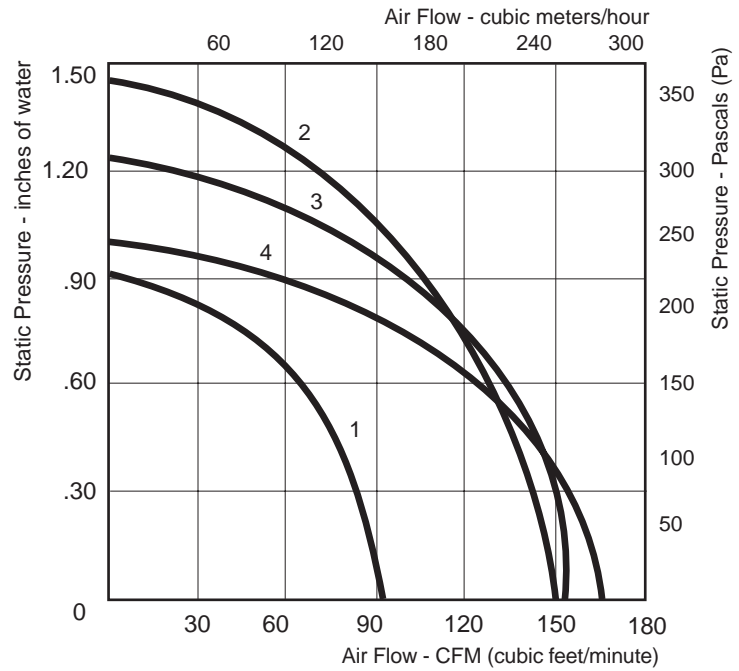
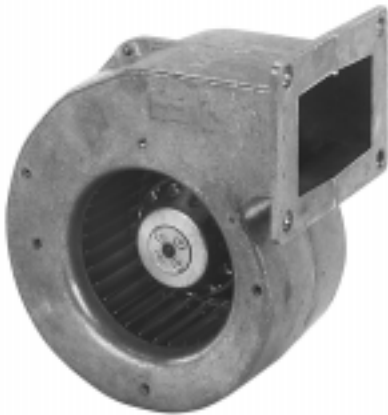


Type	Notes	Dimensions inches & (millimeters)																
		A	B	C	D	E	F	G	H	I	J	K	L	M	N	O	P	Q
G2S085-AA		4.61 (117)	5.0 (127)	2.36 (60)	2.20 (56)	2.99 (76)	2.60 (66)	2.68 (68)	2.28 (58)	2.20 (56)	1.65 (42)	2.40 (61)	3.15 (80)	M4*	.217 (5.5)	2.56 (65)	3.31 (84)	11.81 (300)
G2E085-AA		4.65 (118)	5.0 (127)	2.36 (60)	2.20 (56)	2.99 (76)	2.60 (66)	2.68 (68)	2.28 (58)	2.20 (56)	1.65 (42)	2.40 (61)	3.15 (80)	M4*	.217 (5.5)	2.56 (65)	3.31 (84)	11.81 (300)
G2S097-DB	1	5.63 (143)	5.39 (137)	2.95 (75)	2.44 (62)	-	-	-	-	1.57 (40)	1.81 (46)	1.57 (40)	1.57 (40)	N/A	n/a (80)	3.15 (96)	3.78 (96)	11.81 (300)

NOTE 1: Sheet metal housing. 085 models have cast aluminum housings

* Tapped hole in aluminum housing

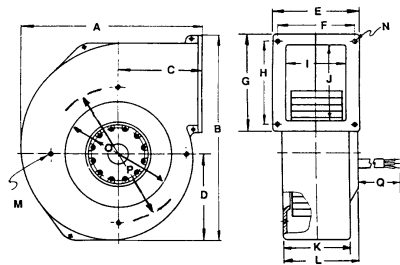
91 to 160 CFM , 115 & 230 Volt AC Single Inlet Centrifugal Blowers



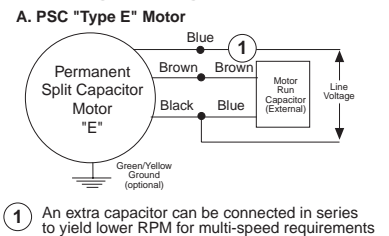
Curve Number	PART NUMBER	Volts	Hertz	Watts	Flange	Rotation*	CFM @ 0"	dBA	Temp. Max °C	Wgt. (lbs.)	Wiring Dgm#	Capacitor (µf)
1	G2E108-AA05-44	115	60	35	Yes	R	91	54	55	3.0	A	4
1	G2E108-AA01-32	230	60	50	Yes	R	91	54	55	3.0	A	1.5
2	G2E120-CA17-08	115	60	90	No	R	150	62	60	4.5	A	8
2	G2E120-CR21-01	230	50/60	100	Yes	R	150	63	60	4.2	A	2
3	G2E120-AR54-43	115	60	105	Yes	R	152	62	60	4.5	A	6
3	G2E120-AR38-43	230	60	90	Yes	R	152	62	60	4.5	A	2
4	G2E133-DN79-08	115	60	95	No	R	160	65	60	4.4	A	8
4	G2E133-DN77-08	230	50/60	88	No	R	160	65	60	4.4	A	2

*Rotation as viewed from side opposite the lead exit: R = clockwise; L = counter-clockwise

Dimensions



Wiring Diagram

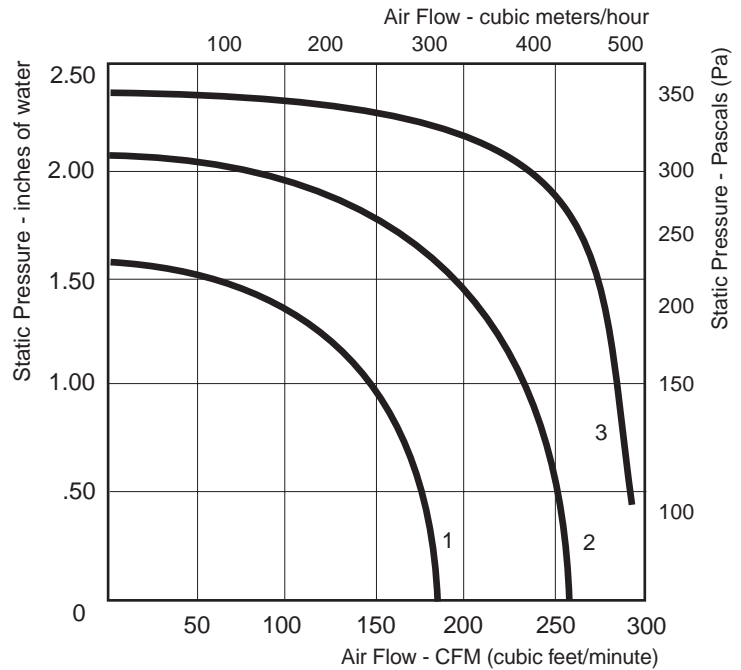
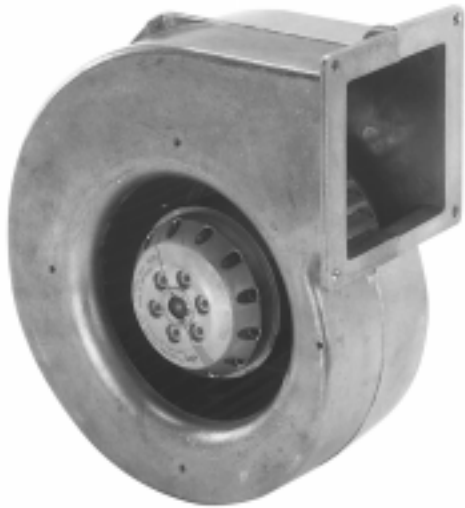


Type	Notes	Dimensions inches & (millimeters)																
		A	B	C	D	E	F	G	H	I	J	K	L	M	N	O	P	Q
G2E108-AA		6.26 (159)	7.20 (183)	3.11 (79)	2.80 (71)	4.53 (115)	3.82 (97)	3.27 (83)	2.60 (66)	2.99 (76)	1.97 (50)	3.23 (82)	3.23 (82)	M4*	.314 (8)	3.43 (87)	4.65 (118)	11.81 (300)
G2E120-AR		6.85 (174)	7.48 (190)	3.23 (82)	3.23 (82)	4.53 (115)	3.94 (100)	3.27 (83)	2.68 (68)	2.99 (76)	1.97 (50)	3.23 (82)	3.86 (98)	M4*	.276 (7)	3.94 (100)	5.20 (132)	17.72 (450)
G2E120-CA/CR	1	6.73 (171)	8.15 (207)	3.43 (87)	3.11 (79)	4.33 (110)	3.70 (94)	3.86 (98)	3.23 (82)	3.03 (77)	2.64 (67)	3.03 (77)	3.90 (99)	.118 (3)	.236 (6)	3.78 (96)	4.33 (110)	17.72 (450)
G2E133-DN	1	6.73 (171)	7.09 (180)	3.43 (87)	3.11 (79)	-	-	-	-	2.32 (59)	2.64 (67)	2.32 (59)	3.19 (81)	.118 (3)	.236 (6)	-	5.51 (140)	17.72 (450)

NOTE 1: Sheet metal housing. Other models have cast aluminum housings

* Tapped hole in aluminum housing

180 to 318 CFM, 115 & 230 Volt AC Single Inlet Centrifugal Blowers

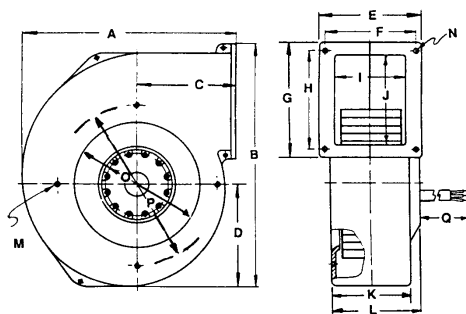


Curve Number	PART NUMBER	Volts	Hertz	Watts	Flange	Rotation**	CFM @ 0"	dBA	Temp. Max °C	Wgt. (lbs.)	Wiring Dgm#	Capacitor (µf)
1	G2E140-AL30-48	115	60	130	Yes	R	180*	60	40	7.0	A	10
1	G2E140-AL40-48	230	50/60	145	Yes	R	180*	60	40	7.0	A	2
2	G2E140-AC13-42	115	60	200	Yes	R	251	67	40	7.5	A	16
2	G2E140-AC05-42	230	60	210	Yes	R	251	67	40	7.5	A	4
3	G2E146-BF05-29*	115	60	295	Yes	R	318*	69	40	8.5	A	20
3	G2E146-BF01-35*	230	60	330	Yes	R	318*	69	40	8.5	A	5

* Not to be run wide open - refer to performance curve.

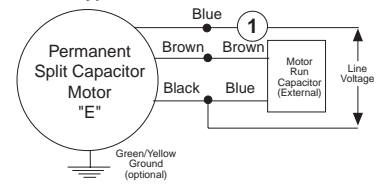
**Rotation as viewed from side opposite the lead exit: R = clockwise; L = counter-clockwise

Dimensions



Wiring Diagram

A. PSC "Type E" Motor

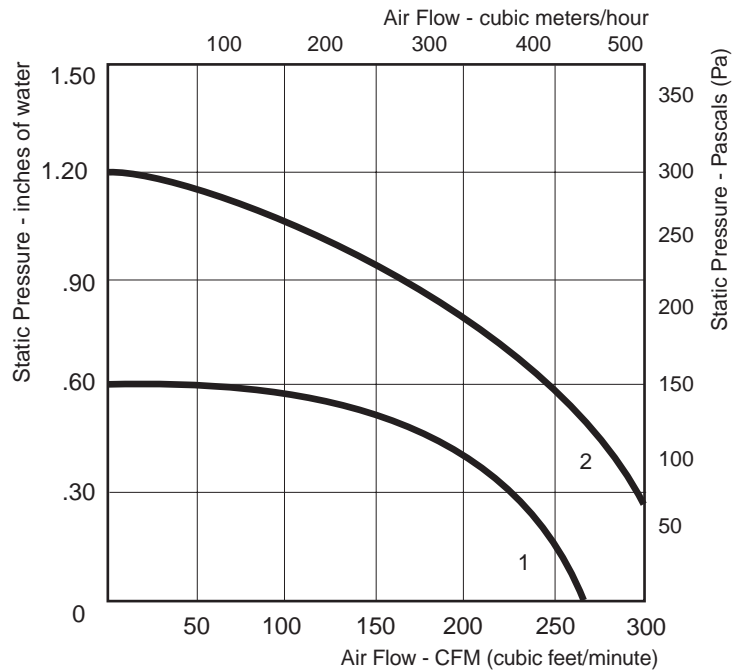
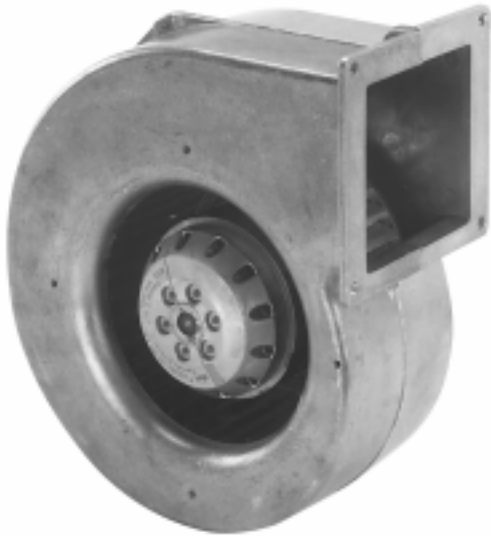


① An extra capacitor can be connected in series to yield lower RPM for multi-speed requirements

Type	Notes	Dimensions inches & (millimeters)																
		A	B	C	D	E	F	G	H	I	J	K	L	M*	N	O	P	Q
G2E140-AL	2	8.90 (226)	10.28 (261)	4.06 (103)	4.21 (107)	5.12 (130)	4.53 (115)	4.72 (120)	4.13 (105)	3.70 (94)	3.62 (92)	3.94 (100)	3.94 (100)	M4	.25 (6.6)	4.65 (118)	6.22 (158)	17.72 (450)
G2E140-AC	2	8.90 (226)	10.28 (261)	4.06 (103)	4.21 (107)	5.12 (130)	4.53 (115)	4.72 (120)	4.13 (105)	3.70 (94)	3.62 (92)	3.94 (100)	3.94 (100)	M4	.25 (6.6)	4.65 (118)	6.22 (158)	17.72 (450)
G2E146-BF	2	8.90 (226)	10.28 (261)	4.06 (103)	4.21 (107)	5.12 (130)	4.53 (115)	4.72 (120)	4.13 (105)	3.70 (94)	3.62 (92)	3.94 (100)	4.09 (104)	M4	.25 (6.3)	4.94 (126)	6.22 (158)	17.72 (450)

NOTE 2: Sheet metal housing available on special order, standard housing cast aluminum * Tapped hole in aluminum housing

262 to 350 CFM, 115 & 230 Volt AC Single Inlet Centrifugal Blowers

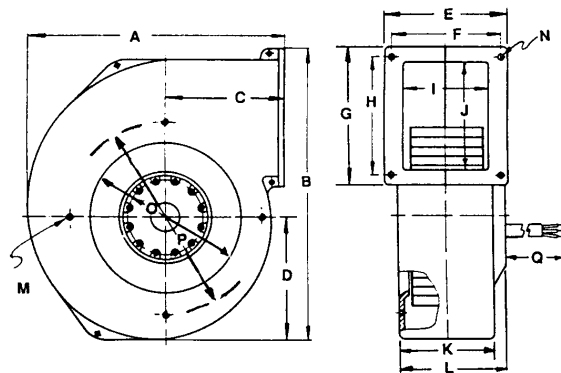


Curve Number	PART NUMBER	Volts	Hertz	Watts	Flange	Rotation**	CFM @ 0"	dBA	Temp. Max °C	Wgt. (lbs.)	Wiring Dgm#	Capacitor (µf)
1	G4E160-AB15-09	115	60	94	Yes	R	262	67	65	7.0	A	7
1	G4E160-AB01-11	230	50/60	65	Yes	R	262	67	65	7.0	A	2
2	G4E180-AB09-15	115	60	152	Yes	R	350	58	45	7.5	A	10
2	G4E180-AB01-15	230	60	152	Yes	R	350	58	45	7.5	A	3

* Not to be run wide open - refer to performance curve.

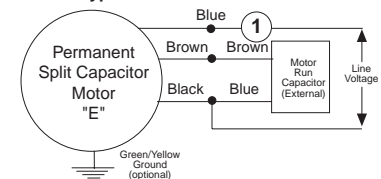
**Rotation as viewed from side opposite the lead exit: R = clockwise; L = counter-clockwise

Dimensions



Wiring Diagram

A. PSC "Type E" Motor



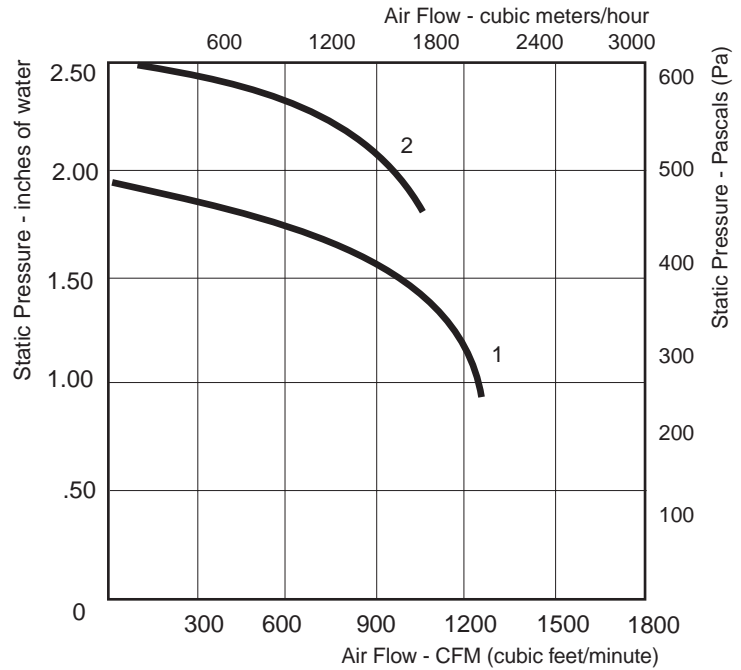
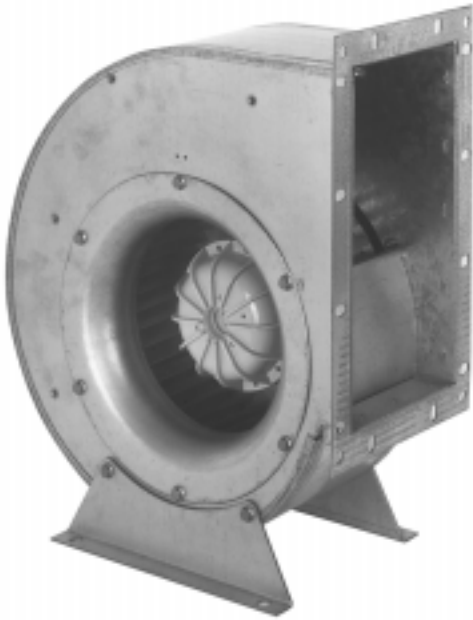
① An extra capacitor can be connected in series to yield lower RPM for multi-speed requirements

Type	Notes	Dimensions inches & (millimeters)																
		A	B	C	D	E	F	G	H	I	J	K	L	M*	N	O	P	Q
G4E160-AB	2	8.90 (226)	10.27 (261)	4.06 (103)	4.21 (107)	5.12 (130)	4.53 (115)	4.72 (120)	4.13 (105)	3.70 (94)	3.62 (92)	3.94 (100)	3.94 (100)	M4	.260 (6.6)	5.12 (130)	6.89 (175)	17.72 (450)
G4E180-AB	2	10.24 (260)	11.54 (293)	4.72 (120)	4.80 (122)	4.92 (125)	4.33 (110)	5.51 (140)	4.72 (120)	3.39 (86)	4.33 (110)	3.62 (92)	4.13 (105)	M4	.275 (7)	5.91 (150)	7.64 (194)	17.72 (450)

Notes: 2. Sheet metal housing available on special order, cast aluminum is standard

*Tapped hole in aluminum housing.

1100 to 1250 CFM, 115 & 230 Volt AC Single Inlet Centrifugal Blowers

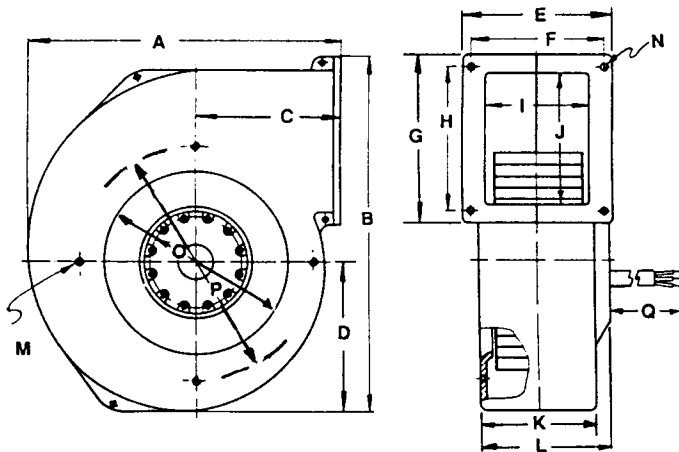


Curve Number	PART NUMBER	Volts	Hertz	Watts	Flange	Rotation**	CFM @ 0"	dBA	Temp. Max °C	Wgt. (lbs.)	Wiring Dgm#	Capacitor (µf)
1	RG25P-4/106482	115	60	1100	Yes	R	1250*	96	40	32	C	60
1	RG25P-4/106483	230	60	1100	Yes	R	1250*	96	40	32	C	16
2	RG28P-4/106484	230	60	1800	Yes	R	1100*	90	40	50	C	25

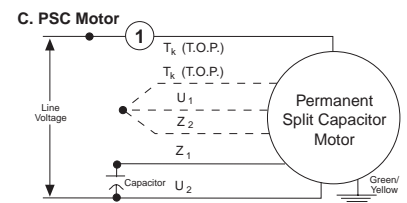
* Not to be run wide open - refer to performance curve.

**Rotation as viewed from side opposite the lead exit: R = clockwise; L = counter-clockwise

Dimensions



Wiring Diagram



① An extra capacitor can be connected in series to yield lower RPM for multi-speed requirements
T_k leads are brown. U₁ & U₂ leads are blue. Z₁ & Z₂ leads are black. Dotted lines not supplied on all design.

Type	Notes	Dimensions inches & (millimeters)																
		A	B	C	D	E	F	G	H	I	J	K	L	M	N	O	P	Q
RG25P	1	16.42 (417)	19.13 (486)	7.68 (195)	7.87 (200)	8.66 (220)	6.93 (176)	15.04 (382)	12.44 (316)	6.46 (164)	12.52 (318)	6.46 (164)	10.43 (265)	M12	.39 (10)	-	-	17.72 (450)
RG28P	1	18.23 (463)	20.78 (528)	8.46 (215)	8.27 (210)	9.57 (243)	6.93 (176)	16.57 (421)	12.44 (316)	7.24 (184)	14.09 (358)	7.24 (184)	11.50 (292)	M12	.39 (10)	-	-	17.72 (450)

NOTE 1: Sheet metal housing