

**Description**

A compact, economical, 6 or 7 figure, non-reset, electromechanical counter designed for general purpose industrial and commercial counting applications. It is designed for a variety of mounting methods as required by the application. Commonly used for coin-operating equipment, photocopiers and vending machines.

**Features**

- 6 or 7 figure
- Compact
- Non-reset
- Variety of mounting options

**Options**

- Voltages
- Lead lengths
- 5 figure

**Specifications**

Figures: 6 or 7 figures, white on black, 0.17" [4.3mm] high  
 Reset: None  
 Speed: 1,000 counts/minute AC, (min. 30ms - on, 30ms - off)  
 1,200 counts/minute DC, (min. 25ms - on, 25ms - off)  
 Power: AC: 24VAC ~ 4 watts  
 115VAC ~ 3.5 watts  
 230VAC ~ 5 watts  
 DC: 12/24VDC ~ 2 watts

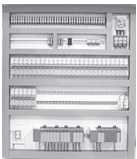
Mounting: Panel or base  
 Terminations: (2) #22 AWG 105°C wire leads, 12" [305mm] long  
 Operating Life: Beyond 10 million counts  
 Temp. Range: -15°F to +140°F [-26°C to +60°C]  
 Approvals: UL Recognized, CE Compliant  
 Weight: 3.5 oz. [99g]

Models	Description	Models	Description
P2-4816	115VAC, 6 figures, P panel mount	D8-4817	24VDC, 7 figures, D base mount
P8-4816	24VDC, 6 figures, P panel mount	P2-4817	115VAC, 7 figures, P panel mount
R2-4816	115VAC, 6 figures, R panel mount	P8-4817	24VDC, 7 figures, P panel mount
SR2-4816	115VAC, 6 figures, SR panel mount	R8-4817	24VDC, 7 figures, R panel mount
SR8-4816	24VDC, 6 figures, SR panel mount	SR8-4817	24VDC, 7 figures, SR panel mount
V1-4816	230VAC, 6 figures, V base mount	V2-4817	115VAC, 7 figures, V base mount
V2-4816	115VAC, 6 figures, V base mount	V8-4817	24VDC, 7 figures, V base mount
V3-4816	24VAC, 6 figures, V base mount		
V8-4816	24VDC, 6 figures, V base mount		
V9-4816	12VDC, 6 figures, V base mount		

\* Items in bold are normally in factory stock.

**Applications**

Control panels



Gaming machines



Vending machines



Coin-operated equipment

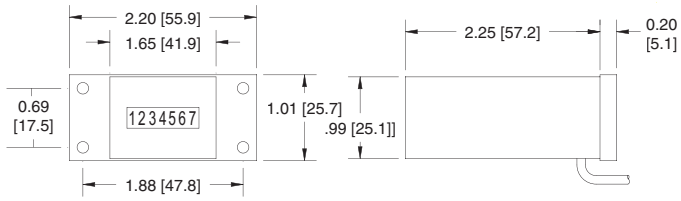


Photocopiers



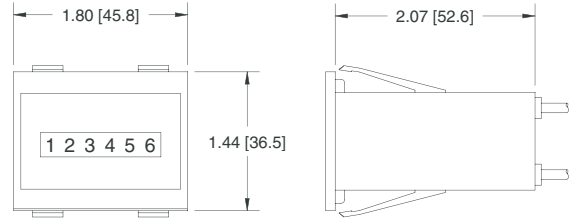
**Dimensions**

**D - Mount**



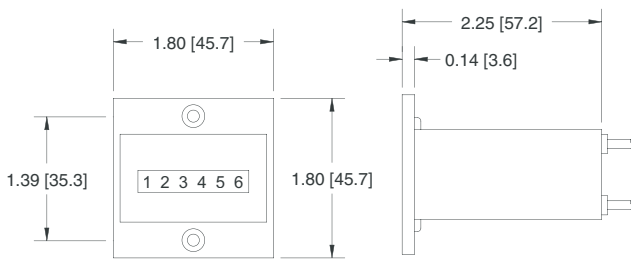
Mounting holes: 0.15" [3.8] Dia.

**SR - Mount**



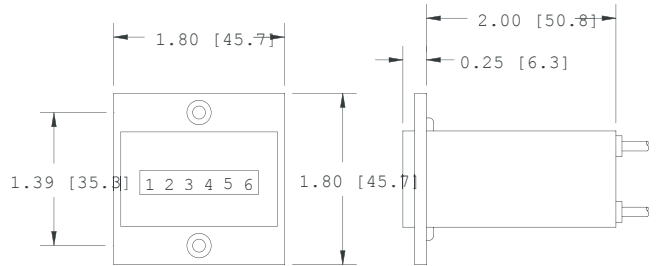
Panel cutout: 1.67" x 1.29" [42.4 x 32.8mm]  
Recommended panel thickness: 0.04" to 0.08" [1.0 to 2.0mm]

**P - Mount**



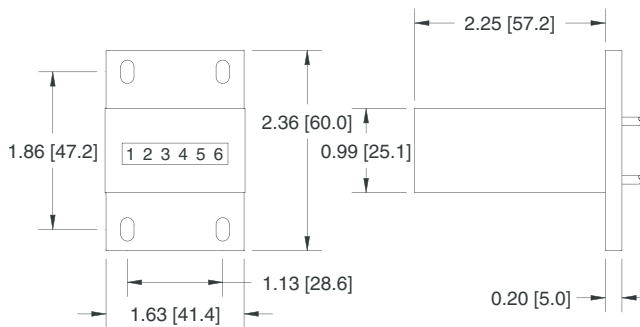
Mounting holes: For #5 flat head screw  
Panel cutout: 1.72" x 1.05" [43.7 x 26.7mm]

**R - Mount**



Mounting holes: For #5 flat head screw  
Panel cutout: 1.72" x 1.05" [43.7 x 26.7mm]

**V - Mount**



Mounting holes: 0.16" x 0.28" [4.1 x 7.1mm] slots