

STANCOR

POWER TRANSFORMERS

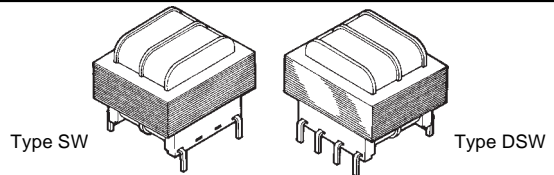
PRINTED CIRCUIT TRANSFORMERS "SIDE-WINDER"

Single & Dual Primary-Split Bobbin-PC Mount Transformers

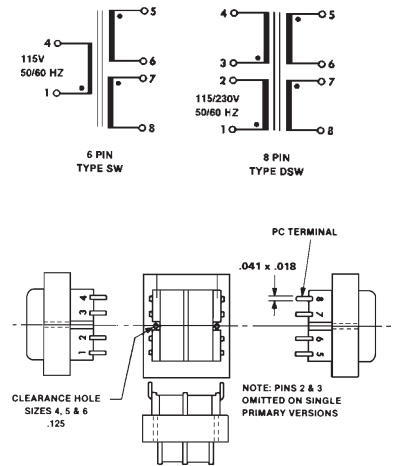
These are compact transformers with primary and secondaries wound side by side. The "Side-Winder" is non-concentrically wound, to reduce size and cost. Split Bobbin winding and low capacitive coupling eliminates electrostatic shielding requirement and expense.

Side-Winders are available with Single 115V 50/60 Hz or Dual 115/230V 50/60 Hz Primaries, plus secondaries are split permitting series or parallel connection. U.L. Recognized Units. (File Card E-68100), CSA Certified (File LR 67965)

- High isolation.... 2,500 V RMS. Hi-Pot Testing
- PC Pins... Precision spaced insert directly into PC Boards
- Class B insulation----130°C

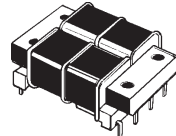


Single 115V 6 Pin	Price	Dual 115/230V 8 Pin	Price	Secondary RMS Rating		
				Individual	Series Output	Parallel Output
SW-212	\$10.09	DSW-212	\$10.78	6.3V @ .09A	12.6V C.T. @ .09A	6.3V @ .18A
SW-312	10.23	DSW-312	11.10	6.3V @ .2A	12.6V C.T. @ .2A	6.3V @ .4A
SW-412	10.78	DSW-412	11.63	6.3V @ .5A	12.6V C.T. @ .5A	6.3V @ 1.0A
SW-512	11.29	DSW-512	12.52	6.3V @ 1.0A	12.6V C.T. @ 1.0A	6.3V @ 2.0A
SW-612	13.45	DSW-612	15.06	6.3V @ 1.6A	12.6V C.T. @ 1.6A	6.3V @ 3.2A
SW-216	10.09	DSW-216	10.78	8V @ .07A	16V C.T. @ .07A	8V @ .14A
SW-316	10.23	DSW-316	11.10	8V @ .15A	16V C.T. @ .15A	8V @ .3A
SW-416	10.78	DSW-416	11.63	8V @ .4A	16V C.T. @ .4A	8V @ .8A
SW-516	11.29	DSW-516	12.52	8V @ .8A	16V C.T. @ .8A	8V @ 1.6A
SW-620	13.45	DSW-620	15.06	10V @ 1A	20V C.T. @ 1A	10V @ 2A
SW-224	10.09	DSW-224	10.78	12V @ .045A	24V C.T. @ 0.45A	12V @ .09A
SW-324	10.23	DSW-324	11.10	12V @ .1A	24V C.T. @ .1A	12V @ .2A
SW-424	10.78	DSW-424	11.63	12V @ .25A	24V C.T. @ .25A	12V @ .5A
SW-524	11.29	DSW-524	12.52	12V @ .5A	24V C.T. @ .5A	12V @ 1.0A
SW-228	10.09	DSW-228	10.78	14V @ .04A	28V C.T. @ .04A	14V @ .08A
SW-328	10.23	DSW-328	11.10	14V @ .085A	28V C.T. @ .085A	14V @ .17A
SW-428	10.78	DSW-428	11.63	14V @ .2A	28V C.T. @ .2A	14V @ .4A
SW-528	11.29	DSW-528	12.52	14V @ .42A	28V C.T. @ .42A	14V @ .84A
SW-236	10.09	DSW-236	10.78	18V @ .03A	36V C.T. @ .03A	18V @ .06A
SW-336	10.23	DSW-336	11.10	18V @ .065A	36V C.T. @ .065A	18V @ .13A
SW-436	10.78	DSW-436	11.63	18V @ .17A	36V C.T. @ .17A	18V @ .34A
SW-536	11.29	DSW-536	12.52	18V @ .35A	36V C.T. @ .35A	18V @ .7A
SW-248	10.09	DSW-248	10.78	24V @ .023A	48V C.T. @ .023A	24V @ .046A
SW-348	10.23	DSW-348	11.10	24V @ .05A	48V C.T. @ .05A	24V @ .1A
SW-448	10.78	DSW-448	11.63	24V @ .125A	48V C.T. @ .125A	24V @ .25A
SW-548	11.29	DSW-548	12.52	24V @ .25A	48V C.T. @ .25A	24V @ .5A



PRINTED CIRCUIT TRANSFORMERS "LOW-BOY"

Low profile

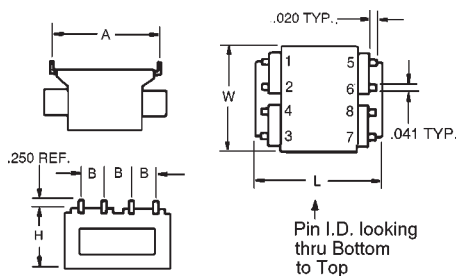


LOW-BOY- allow 3/4" card spacing for 2& 3, VA units; 1" for 4,5,&6 VA, and 1-1/4" for 12 VA units. DUAL PRIMARIES - versatility!! 115/230V. 50/60 Hz. SPLIT BOBBIN - Side by side windings - (No static shield). SEMI-TOROIDAL CONSTRUCTION - Reduces Radiated Magnetic Fields and results in Balanced Windings. HI-POT - 2000 volts standard RMS P.C. TERMINALS - Precision Spaced. U.L. Recognized

File E-68100

Output V.A.	Dimensions-Inches					Wt. Oz.
	H	W	L	A	B	
2,3	.625	1.562	1.875	1.600	.375	4.5
4,6	.875	1.562	1.875	1.600	.375	5.5
12	1.062	2.000	2.500	2.000	.500	11.5

Dimensions-Inches



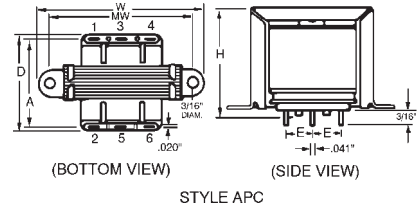
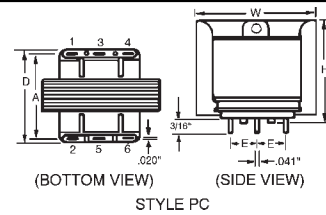
Part Number	Price	V.A. or Watts	Secondary	
			Series Output Across 5 & 8 Connect 6 & 7	Parallel Output Across 5 & 7, 6 & 8
LB310	\$13.28	3	10V C.T. @ 300MA	5V @ 600MA
LB410	13.58	4	10V C.T. @ 400MA	5V @ 800MA
LB610	13.89	6	10V C.T. @ 600MA	5V @ 1.2A
LB1210	14.33	12	10V C.T. @ 1200MA	5V @ 2.4A
LB412	13.58	4	12V C.T. @ 333MA	6V @ 667MA
LB612	13.89	6	12.6V C.T. @ 450MA	6.3V @ 900MA
LB1212	14.33	12	12.6V C.T. @ 900MA	6.3V @ 1.8A
LB215	13.18	2	15V C.T. @ 150MA	7.5V @ 300MA
LB616	13.89	6	16V C.T. @ 350MA	8V @ 700MA
LB1216	14.33	12	16V C.T. @ 700MA	8V @ 1.4A
LB620	13.89	6	20V C.T. @ 300MA	10V @ 600MA
LB1220	14.33	12	20V C.T. @ 600MA	10V @ 1.2A
LB624	13.89	6	24V C.T. @ 250MA	12V @ 500MA
LB1224	14.33	12	24V C.T. @ 500MA	12V @ 1A
LB634	13.89	6	34V C.T. @ 170MA	17V @ 340MA
LB1234	14.33	12	34V C.T. @ 340MA	17V @ 680MA
LB640	13.89	6	40V C.T. @ 150MA	20V @ 300MA
LB1240	14.33	12	40V C.T. @ 300MA	20V @ 600MA
LB656	13.89	6	56V C.T. @ 100MA	28V @ 200MA
LB1256	14.33	12	56V C.T. @ 200MA	28V @ 400MA
LB688	13.89	6	88V C.T. @ 65MA	44V @ 130MA
LB1288	14.33	12	88V C.T. @ 130MA	44V @ 260MA
LB4120	13.58	4	120V C.T. @ 33MA	60V @ 66MA
LB6120	13.89	6	120V C.T. @ 50MA	60V @ 100MA
LB12120	14.33	12	120V C.T. @ 100MA	60V @ 200MA
LB6230	13.89	6	230V C.T. @ 25MA	115V @ 50MA
LB12230	14.33	12	230V C.T. @ 50MA	115V @ 100MA

PRINTED CIRCUIT TRANSFORMERS

Power Transformers For Small D.C. Power Supplies
U.L. Recognized Unit (File Card E-68100)

SINGLE PRIMARY FOR 115 VOLTS, 50/60 Hz. INPUT

Part Number	Price	Style	V.A. Cap	Output From Two Secondary Windings		
				Individually	Parallel	Series
PPC-1	\$ 13.74	PC	1.5	4.0V. @ .188A.	4.0V @ .376A.	8.0V. C.T. @ .188A.
PPC-3	14.08	PC	1.5	15V. @ .050A.	15V @ .100A	30V. C.T. @ .050A.
PPC-11	12.12	APC	4.5	4.0V. @ .562A.	4.0V @ 1.13A.	8.0V. C.T. @ .562A.
PPC-13	11.08	APC	4.5	15V. @ .150A.	15V @ .300A.	30V. C.T. @ .150A.
PPC-22	14.71	APC	7.5	7.5V. @ .500A.	7.5 @ 1.00A.	15V. C.T. @ .500A.
PPC-23	15.14	APC	7.5	15V. @ .250A.	15V @ .500A.	30V. C.T. @ .250A.

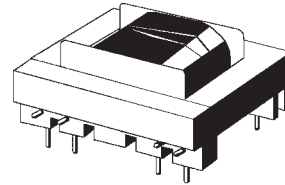


TELEPHONE COUPLING TRANSFORMERS

Designed to meet FCC Part 68

Stancor's Telephone Coupling Transformers (TTPC Series) are ideal for use in voice and data interconnect networks such as modern terminal connection to telephone lines. Stancor has the broadest range of units for general use in impedance matching, circuit isolation, line balancing or bridging, and hybrid applications.

Part Number	Price	Impedance (Ohms)		DC Current MA.	Insertion Loss db Max @1K Hz
		Primary ± 15%	Secondary ± 10 %		
TTPC-2	\$13.06	600	600	0	1.2
TTPC-6	12.23	600	600 C.T.	90	1.8
TTPC-7	11.00	600	600	0	1.2
TTPC-13	9.35	600	600 C.T. Split	90	1.8
PCT-78	22.19	600	600	3	2.0



WALL PLUG-IN POWER SOURCES

Stancor's compact plug-in power supplies help make design work easier. They reduce the size and weight of the product, remove heat from sensitive circuits, often eliminate the need for cooling devices, reduce design time, simplify or eliminate safety agency approvals, provide a secure, tamper-proof power source and safer lower power output to the end product. Wall plug-in power sources are available in AC-DC regulated, unregulated and AC.AC models.

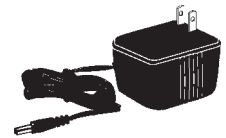
DOMESTIC MODELS AC-DC Unregulated Models 120V, 60 Hz

Part Number	Price	Rated Output	
		Volts	MA
STA-3530	\$9.46	3.0 DC	500
STA-3540	9.46	4.4 DC	400
STA-3560A	9.46	6.0 DC	300
STA-4160	11.49	6.0 DC	600
STA-4160A	11.92	6.0 DC	800
STA-4860	14.67	6.0 DC	1000
STA-3575A	9.46	7.5 DC	300
STA-4875	16.87	7.5 DC	1000
STA-3590A	9.67	9.0 DC	300
STA-4190A	11.92	9.0 DC	500
STA-4890	17.72	9.0 DC	1000
STA-3512	9.67	12.0 DC	50
STA-3512C	9.67	12.0 DC	100
STA3512B	9.67	12.0 DC	200
STA-4112B	11.92	12.0 DC	300
STA-4112	12.21	12.0 DC	400
STA-4112C	12.21	12.0 DC	500
STA-4812D	16.43	12.0 DC	600
STA-4812A	20.53	12.0 DC	1000
STA-5713	27.22	13.5 DC	1300
STA-4814	16.77	14.5 DC	800
STA-4815	16.77	15.0 DC	600
STA-3518	9.85	18.5 DC	80



AC-DC Regulated Models Input 120V, 60 Hz

Part Number	Price	Rated Output	
		Volts	MA
STA-4130	\$14.00	30. DC	350
STA-4190	11.92	9.0 DC	200
STA-4890	17.72	9.0 DC	400
STA-4110A	15.18	10.0 DC	300
STA-300R	15.18	12.0 DC	200

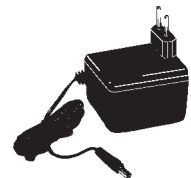


AC-AC Models Input 120V, 60 Hz

Part Number	Price	Rated Output	
		Volts	MA
STA-3545B	\$8.32	4.5 AC	300
STA-4190D	10.01	9.0 AC	500
STA-4110	10.73	10.0 AC	700
STA-3512F	8.32	12.0 AC	200
STA-4112A	10.01	12.0 AC	500
STA-4118	10.01	18.0 AC	300
STA-4124	10.73	24.0 AC	300

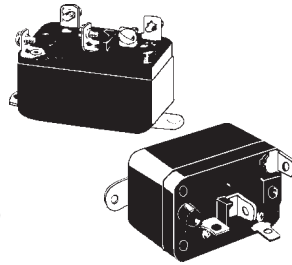
EUROPEAN MODELS AC-DC Unregulated Models 220V, 50 Hz

Part Number	Price	Rated Output	
		Volts	MA
STAF-0381F	\$16.15	6.0 DC	500
STAF-0797F	18.50	6.0 DC	1000
STAF-3309F	15.09	9.0 DC	300
STAF-1058F	16.49	9.0 DC	500
STAF-0329F	19.91	9.0 DC	1000
STAF-2343F	18.50	12.0 DC	500
STAF-1454F	28.70	12.0 DC	1000
STAF-1972F	30.04	15.0DC	1000



A.C. D.C. GENERAL PURPOSE RELAYS TYPE 84

Totally Enclosed, Low Cost, Screw or 1/4" Quick Connect Termination (Except 6 V.A.C. in Screw Type only). Operates Any Position, Isolated Coil, 1 Mounting Bracket, A.C. Coils Rated 50/60 Hz, Screws Included in Boxed Units Only.
U.L. File E12139 or E22381 CSA File LR13360



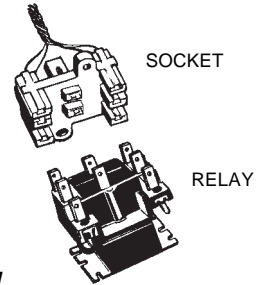
SINGLE POLE NORMALLY OPEN AND SINGLE POLE DOUBLE THROW

Coil Voltage A.C.	Part No. Quick Connect				Contact Rating 125/250 V.A.C.	
	1PNO	Price	1PDT	Price	Induc- tive	Resistive
6	84-901	\$14.54			N.O. 8 Amps Continuous 25 Amps Inrush	N.O. 16 Amps Continuous
24	84-902	14.44	84-906	15.70		
120	84-903	14.86	84-907	16.83		
208/240			84-908	17.49		
Coil Voltage A.C.	Screw Terminal Part No.				D.T. 8 Amps. Continuous 18 Amps. Inrush	D.T. 8 Amps Continuous
	1PNO	Price	1PDT	Price		
24	84-912	\$14.23			3 Amps @ 125 V.A.C. or 1.5 Amps. @ 250 V.A.C. Pilot Duty	
120	84-913	14.94	84-917	15.83		
208/240	84-914	15.83	84-918	15.83		
24	84-922	13.65	84-926	14.99		
120			84-927	15.41		
Coil Voltage D.C.	Resistance in Ohms @ 25°C	Part No. Quick Connect	Price	D.C. Contact Rating Inductive		
				Voltage	Current	
12	90	84D-902	15.52	12	3 Amp	
24	280	84D-903	15.65	24	1.5 Amp	

A.C. POWER CONTACTORS TYPE 91

1/4" Quick Connect Termination
Enclosed Contacts
Operates Any Position
Solenoid Action
A.C. Coils Rated 50/60Hz
Can Be panel Mounted
Separate 91-180-1 Socket And
Terminal Kit Available

U.L. File E12139
CSA File LR 13360

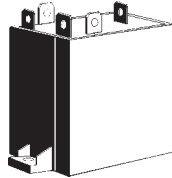


TWO POLE DOUBLE THROW

Coil Volt A.C.	Part No.	Price	Rating On Term		Power Rating	
			1-2-3	4-5-6	Inductive	Resistive
24	91-901	\$23.80	Power	Power	12 A Cont. 60A Inrush 125 V.A.C.	15 Amp 277 V.A.C Max.
120	91-902	24.30				
208/240	91-903	20.20				
120	91-905	20.88	Power	Pilot	Pilot Rating Inductive: 125 V.A., 1/10 H.P. Resistive: 277 V.A.C. Max.	

A.C. D.C. GENERAL PURPOSE RELAYS TYPE 134

Totally Enclosed
Versatile Termination
Quiet Operation
1/4" Quick Connects

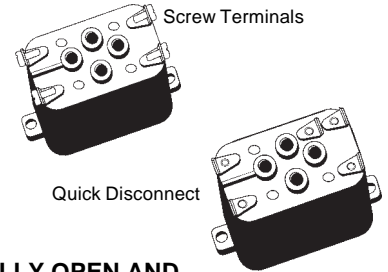


SINGLE POLE NORMALLY OPEN AND SINGLE POLE DOUBLE THROW

POWER TYPES -- Quick Connect Termination			
Coil Volts A.C.	Catalog Number		Price
	1PDT		
24	134-916		\$10.36
120	134-917		11.15
			Contact Rating Inductive 12 FLA, 84 LRA @ 125 Vac 8 FLA, 48 LRA @ 250 Vacc 7FLA, 42 LRA @ 277 Vac Horsepower Ratings 3/4 HP @ 125 Vac 1 HP @ 250 Vac 1 HP @ 277 Vac
U.L. File No. E12139 or E22381. CSA File No. LR 13360			

A.C. D.C. GENERAL PURPOSE RELAYS TYPE 184

Totally Enclosed
Low Cost
Screw or 1/4" Quick Connects
Operates Any Position
Isolated Coil
End Mounting Bracket
Ac Coils Rated 50/60 Hz
Screws Included jin Boxed
Unit



SINGLE POLE NORMALLY OPEN AND SINGLE POLE DOUBLE THROW

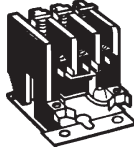
Coil Volts A.C.	Catalog Number Screw Terminals				Contact Rating	
	1PNO	Price	1PDT	Price	Inductive	Resistive
24	184-902	\$ 11.78			12 A. Continuous 60 A. Inrush @ 125 Vac	18 Amps Continuous @ 277 Vac
120	184-903	12.04	184-907	\$14.99		
Catalog Number Quick Disconnect						
24	184-912	12.31	184-916	13.13	8 A. Continuous 48 A. Inrush @ 250 Vac	
120	184-913	12.31	184-918	14.68		
208/240					7 A. Continuous 42 A. Inrush @ 277 Vac	
24	184-922	11.55			3 A. @ 277 Vac 125 VA @ 125 Vac 277VA @ 277 Vac	
120			184-927	13.76		
U.L. File No. E12139 or E22381. CSA File No. LR 13360						

STANCOR

A.C. POWER CONTACTORS

TYPE 154 - 20 AMPS

Interchangeable Mounting
Non-Positional
Low Coil Wattage
Double-Break Contacts
Non-Corroding Structure
Low Temp. Rise
Riveted Terminal Assemblies



U.L. File E12139
CSA File LR13360

THREE POLE NORMALLY OPEN 20 AMPS

Coil Voltage (50/60Hz)	Part Number	Price	Contact Rating Per Pole	
			Inductive	Resistive
120	154-902	\$45.02	Continuous 20 Amps. @ 600V.	30 Amps @ 600 V. A.C. Max
208/240	154-903	45.02		
Inrush 120 Amps. @ 227 V. 100 Amps. @ 480 V. 80 Amps. @ 600V.				

25 AMPS

Coil Voltage (50/60Hz)	Part Number	Price	Contact Rating Per Pole	
			Inductive	Resistive
24	154-904	\$46.32	Continuous 25 Amps. @ 600V.	35 Amps @ 600 V. A.C. Max
120	154-905	47.71		
Inrush 150 Amps. @ 277 V. 125 Amps. @ 480 V. 100 Amps. @ 600V.				

30 AMPS

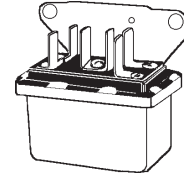
Coil Voltage (50/60Hz)	Part Number	Price	Contact Rating Per Pole	
			Inductive	Resistive
24	154-907	\$65.35	Continuous 30 Amps. @ 600V.	40 Amps @ 600 V. A.C. Max
120	154-908	65.35		
Inrush 180 Amps. @ 277 V. 150 Amps. @ 480 V. 120 Amps. @ 600V.				

TWO & THREE POLE NORMALLY OPEN 40 AMPS

Coil Voltage (50/60Hz)	Part Number			Contact Rating Per Pole		
	2PNO	Price	3PNO	Price	Inductive	Resistive
24	154-913	\$49.02	154-910	\$68.59	Continuous 40 Amps. @ 600V.	50 Amps @ 600 V. A.C. Max
120	154-914	52.52	154-911	68.59		
208/240	154-915	52.52	154-912	68.59	Inrush 240 Amps. @ 277 V. 200 Amps. @ 480 V. 160 Amps. @ 600V.	

TYPE 150 - HEAVY DUTY D.C. POWER CONTACTORS

Metal Case
Totally Enclosed
Isolated Coil Side
Bracket
1/4" Quick-Connect Termination
Low Cost



SINGLE POLE NORMALLY OPEN

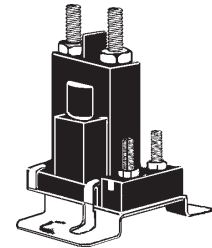
D.C. Coil Voltage	Resistance in Ohms	Part Number	Price	Contact Rating	
				Voltage	Current
12	43	150-902	\$16.31	12	25 Amp
24	190	150-903	16.83	24	12 Amp

SINGLE POLE DOUBLE THROW

D.C. Coil Voltage	Resistance in Ohms	Part Number	Price	Contact Rating	
				Voltage	Current
12	43	150-905	\$17.38	12	15 Amp
24	190	150-906	20.72	24	7.5 Amp

TYPE 120 SOLENOID - HEAVY DUTY D.C. POWER CONTACTOR

Water resistant
Durable in high temperature and high vibration conditions
Capable of handling low-level and high current requirements
Versatile termination
Recommended mounting terminals up or horizontal
Duty Cycle: Continuous
Intermittent -30 seconds" ON" maximum and minimum 6 minutes "OFF"



SINGLE POLE NORMALLY OPEN

Part Number Continuous Duty				Coil Volts DC	Coil Resistance Continuous Duty
Standard Bracket	Price	L Bracket	Price		
120-901	\$14.21	120-907	\$14.49	12	18.0
120-902	14.65			15	20.8
120-904	14.99			24	64.0
Intermittent Duty				Coil Volts DC	Intermittent Duty
L Bracket			Price		
120-912			\$10.31	12	6.0
Rating	Full Load	Inrush	Elec. Life	Contact Material	
Continuous	100A	400A	*	Silver Alloy	
Intermittent	80A	400A	100,00	Copper	

* 12VDC, 15 VDC 50,000 operations
18 VDC, 24 VDC, 36 VDC 25,000 operations

TYPE 70 D.C. POWER CONTACTOR

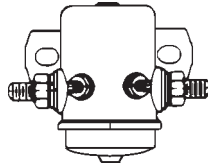
Isolated Coil
Silver or Copper Contacts
Hardware Included
Continuous Duty Coil

CONTACT RATING

D.C. INDUCTIVE LOAD - 36V. MAX.

Voltage (D.C.)	Normally Open		Normally Closed	
	Continuous	Inrush	Continuous	Inrush
6	80 Amp	300 Amp	60 Amp	100 Amp
12	80 Amp	150 Amp	60 Amp	60 Amp
24-36	50 Amp	50 Amp	30 Amp	30 Amp

Non-turning studs
Draw steel dust proof enclosure
Copper stud power & coil terminals
Double break rotating disc movable contact
Solenoid actuated
Suggested mounting - cap down

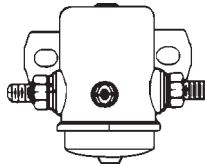


SINGLE POLE NORMALLY OPEN - 4 TERMINAL

Coil Voltage (D.C.)	Resistance in Ohms @ 25°C	Part Number	Price	Contact Material
6	4	70-901	\$19.59	Copper
12	16	70-902	19.70	
24	60	70-903	19.94	
36	114	70-904	18.77	
12	16	70-906	45.65	
24	60	70-907	45.74	
36	114	70-908	45.95	

TYPE 70 3 TERMINAL

Continuous Duty Coil
Copper Contacts
Hardware Included
Coil Grounded to Case or
Coil Common to Load
Rugged Construction

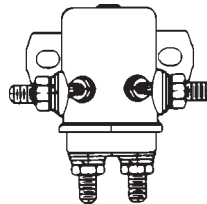


SINGLE POLE NORMALLY OPEN - 3 TERMINAL

Coil Voltage (D.C.)	Resistance in Ohms @ 25°C	Part Number	Price	Contact Material
12	16	70-914	\$18.07	Copper Coil Grounded to Case
24	60	70-915	19.25	
6	4	70-917	18.93	Copper Coil Grounded to Load
12	16	70-918	19.02	

TYPE 70 6 TERMINAL

Continuous Duty Coil
Isolated Coil
Hardware Included
Choice of 2 Types
Contacts



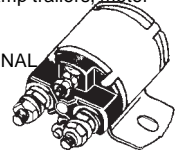
SINGLE POLE DOUBLE THROW - 6 TERMINAL

Coil Voltage (D.C.)	Resistance in Ohms @ 25°C	Part Number	Price	Contact Material
12	16	70-910	\$80.05	N.O. and N.C. Silver
24	60	70-911	80.05	
36	114	70-912	72.32	
12	16	70-922	46.42	N.O. Copper and N.C. Silver
24	60	70-923	46.42	

TYPE 124 HEAVY DUTY D.C. POWER CONTACTORS

Max. Pick-Up 75% rated coil voltage
Design Ambient - 40°C to 65°C.
Maximum Continuous coil watts. 12 @ rated voltage
Recommended Mounting Position: Unit in Vertical plane with coil terminals up. Horizontal is acceptable
Design meets U.L. 583 industrial Truck Standard. Dust and Splash proof cover.
Application: controlling D.C. starting motors on gasoline engine driven auxiliaries. Battery charging power circuits, motor reversing circuits as found in winch applications. The 124 is also applicable where ruggedness and high current capacity is required for D.C. mobile equipment such as: in-plant lifts, industrial equipment, recreational vehicles - golf carts, camp trailers, motor homes.
Contact termination: 5/8" - 24 UNF-2A stud
Coil Termination: # 10-32 UNF-2A thread

3 TERMINAL
S.P.N.O.



CONTACT RATING D.C. INDUCTIVE LOAD

Voltage (D.C.)	Normally Open		Normally Closed	
	Continuous	Inrush	Continuous	Inrush
12	100 Amp	400 Amp	50 Amp	200 Amp
24	100 Amp	400 Amp	50 Amp	100 Amp
36	100 Amp	400 Amp	50 Amp	100 Amp

Coil Voltage (D.C.)	Coil Resistance +8 % 25°	SPNO 4Terminal Isolated Coil	Price
12V	13.2	124-902	\$30.20
24V	53	124-903	31.15
36V	120	124-904	31.15

Coil Voltage (D.C.)	Coil Resistance +8 % 25°	SPNO 4Terminal Grounded Coil	Price
12V	13.2	124-906	\$30.04
24V	53	124-907	31.15

Voltage DC	Contact Rating D.C. Inductive Load			
	NO		NC*	
	Cont.	Inrush	Cont.	Inrush
12	100 Amps	400 Amps	50 Amps	200 Amps
24	100 Amps	400 Amps	50 Amps	100 Amps
36	100 Amps	400 Amps	50 Amps	100 Amps

Coil Voltage (D.C.)	Coil Resistance +8 % 25°	SPDT 6Terminal Isolated Coil	Price
12V	13.2	124-910	\$48.31
24V	53	124-911	48.31
36V	120	124-912	48.31