



**Data Sheet**



Product Category: Filters

Series Number	Package	Description	Last Modified
761 ~ 762	Surface Mount Filter	10.7 MHz Ceramic	Jan. 01 2007

**Filter FEATURES**

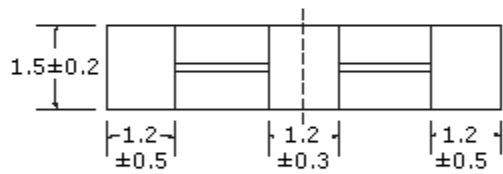
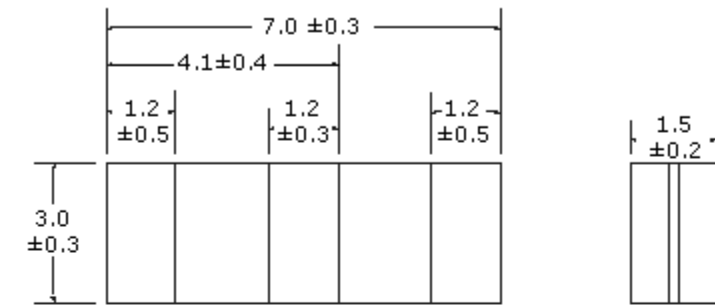
- Surface Mount Ceramic Filter
- Low Loss
- Wide / Narrow Bandwidths
- RoHS Compliant



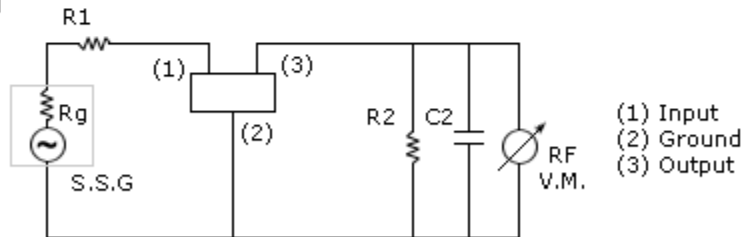
**TECHNICAL CHARACTERISTICS / PART NUMBER GUIDE**

Part Number	3 dB Bandwidth	20 dB Bandwidth	Insertion Loss	Spurious Attenuation (9 ~ 12 KHz)	In/Out Impedance
	KHz min.	KHz max.	dB max.	dB min.	ohm
762-0107-HY	110 ±30	350	9.0	30	330
761-0107-HY	110 ±30	320	6.0 ±2.0	35	330
762-0107-J	150 ±40	430	10.0	30	330
761-0107-J	150 ±40	380	5.5 ±2.0	35	330
762-0107-S3	180 ±40	520	6.0	30	330
761-0107-S3	180 ±40	470	4.0 ±2.0	35	330
762-0107-S2	230 ±50	570	6.0	30	330
761-0107-S2	230 ±50	510	3.5 ±2.0	35	330
762-0107-A5	280 ±50	650	6.0	30	330
761-0107-A5	280 ±50	590	3.0 ±2.0	35	330
762-0107-A20	330 ±50	700	3.0 ±2.0	30	330
761-0107-A19	fn ±175 min.	950	3.0 ±2.0	20 (5~15 MHz)	470

**PACKAGE DIMENSIONS (mm)**



Test Circuit



$R_1=280\Omega\pm 5\%$ ,  $R_2=330\Omega\pm 5\%$ ,  $R_g=50\Omega$   
 $C_2=10\text{pF}$   
 (Including Stray capacitance and input capacitance of RF voltmeter)  
 S.S.G.: Output Voltmeter

**Oscilent Corporation** - CALL **949.252.0522**  
 18195 East McDermott Street . Building D . Irvine . CA 92614 . USA  
 Fax: 949.252.0599 . E-Mail: Sales@Oscilent.com

**Series No.:** 761 to 762