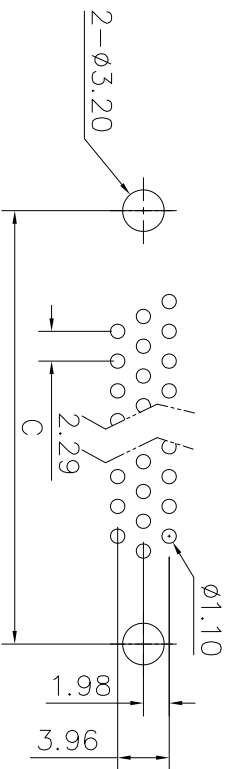
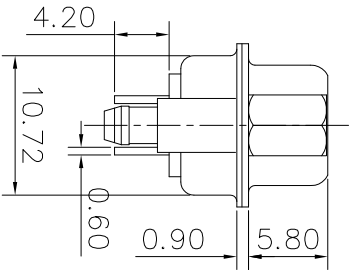
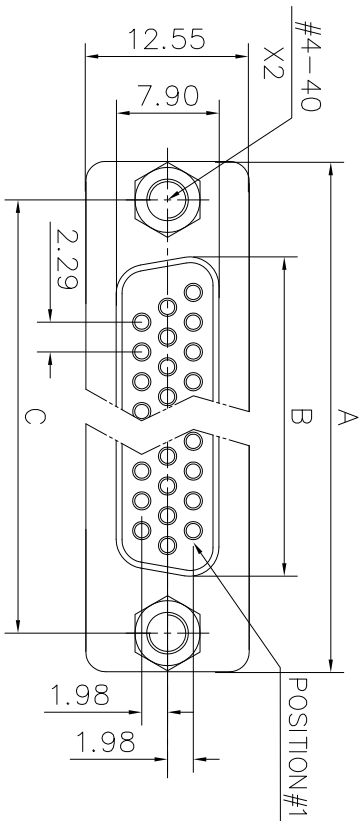


This document is the property of Amphenol Corporation and is addressed to the specific customer. It is not to be reprinted, reproduced or used, in whole or in part, without the prior consent of Amphenol Corporation. Amphenol Corporation will not be held responsible for any errors or omissions or for any consequences arising from the use of the information in this document.



RECOMMENDED P.C.B LAYOUT
(TOLERANCE +/-0.03)

DIM./S	A	B	C	D
SHELL	A	B	C	D
15	30.84	16.24	24.99	19.28
26	39.24	24.56	33.32	27.51
44	53.04	38.38	47.04	41.30
62	69.32	54.76	63.50	57.71

Customer drawing

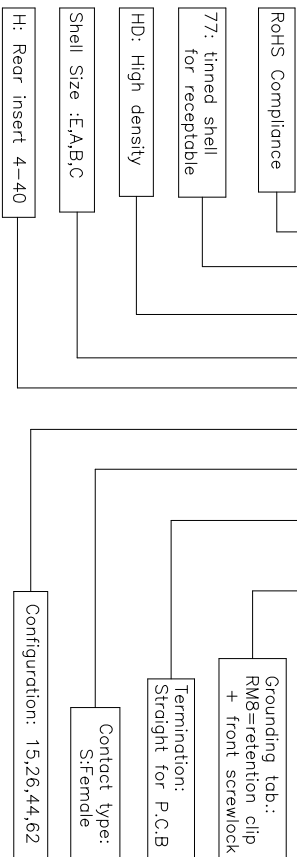
REVISONS		DATE	APPROVED
1	SWM EGN	04/14/08	

D-SUB TECHNICAL DATA

- SHELL : Steel 100u" min tin over 50u" min nickel
- BODY : Glass filled thermoplastic.
Flame retardant to UL94 V-0 Color Black
- CONTACTS : Brass
Gold flash over 50u" min nickel on mating area
100u" min tin over 50u" min nickel on solder area
- BOARDLOCK : Brass. 100u" min tin over 50u" min nickel
- SCREWLOCK: Brass. 50u" min nickel
- ELECTRICAL : Voltage rating 250 V Rms to 50 Hz
Current rating signal contacts 3A
Withstanding Voltage >1000 V Rms to 50 Hz for one minute
Insulation resistance >5000 M Ohms
Contact resistance 20 mOhms max.
- CLIMATIC : Temperature range -55 °C up to 125°C
- MARKING : Amphenol...(Series No.)
Commercial reference
Manufacturing date

PRODUCT CODE

L 77 HD X H XX S OL2 RM8



UNLESS OTHERWISE SPECIFIED TOLERANCES

U.S.	METRIC
.X	0.50
+/-	0.30
.XX	0.20
FRACTIONS +/-	
ANGLES +/-	2'

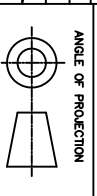
SEE MATERIALS AND FINISHES

DIMENSIONS	INCHES	MILL
REMOVE SHARP EDGES		

APPROVAL

DATE	DATE
04/14/08	04/14/08

DRAWING FILE :



Amphenol

Stamped and formed connector, HD series

SIZE	DRAWING NO.	REV.
A4	C L77HDXXXXSOL2RM8	1
SCALE	SHEET	OF
NONE	1	1