

T812

X

XX

XX

XX

CEU

IDC Socket
2.54mm pitch



Housing Color

0: Grey
1: Black

No of Positions

06= 6 Positions
:
:
64=64 Positions

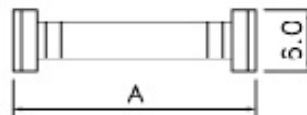
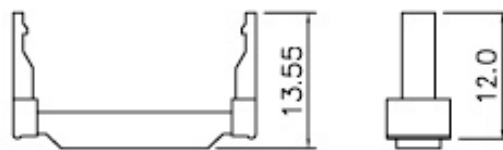
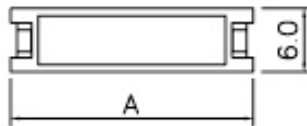
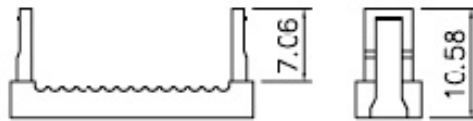
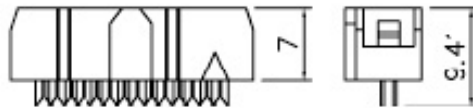
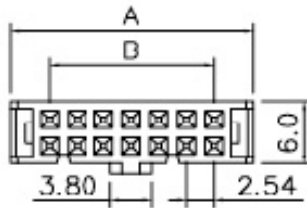
Plating Options

A1: Flash Gold
A2: 15u" selective gold
A3: 30u" selective Gold
SN: Tin

Variation Code

00: w/o Strain Relief
01: With Strain Relief

Fixed index



Strain Relief

position	A	B
6	12.16	5.08
8	14.78	7.62
10	17.27	10.16
12	19.85	12.70
14	22.40	15.24
16	24.94	17.78
20	30.00	22.86
24	35.10	27.94
26	37.59	30.48
30	42.66	35.56
34	47.80	40.64
36	50.29	43.18
40	55.37	48.26
44	60.56	53.34
50	68.18	60.96
56	75.74	68.58
60	80.80	73.66
62	83.35	76.20
64	85.90	78.74

General Specification

Materials and Finish :

Insulator: Glass-reinforce thermoplastic, UL 94V-0, PBT.
Contact : Phosphor Bronze, plated with full flash gold or selected gold in mating area; 100u" min. full tin on the termination area, with entire contact under-plated 50u" min. nickel.

Electrical :

Contact Resistance: 20 mΩ max. at 1A DC.
Insulation Resistance: 1000 MΩ min, at 500 VDC.
Dielectric Withstanding Voltage : 500 VAC/RMS 60Hz for one minute.
Current Rating : 3A per contact
Voltage Rating : 250VAC/RMS 60Hz

Envirement :

Operating Temperature:
-40degree C to +105 degree C