

A01 series

Keylock & selector switches

Distinctive features and specifications

A018_AX1607USR1



- ❑ Panel Sealed to IP65
- ❑ Single pole to four pole changeover
- ❑ Custom engraving & overmould key
- ❑ Push on tab terminals
- ❑ 6A 250VAC

ELECTRICAL SPECIFICATIONS

- **Current/Voltage Rating** : 10mA 5VAC min, 6A 250VAC, 6A 12VDC
- **Initial Contact Resistance** : 10mΩ max at 1Amp 4VDC
- **Insulation Resistance** : 50MΩ min
- **Dielectric Strength** : 750V between open contacts, 5KV live to accessible
- **Electrical Life** : 50,000 cycles min
- **Contact Gap** : >1mm (0.039)
- **Insulation** : Class 2

MECHANICAL SPECIFICATIONS

- **Mechanical Life (operator)** : 100,000 cycles
- **Lamp** : Midget grove T1 ¾ filament, neon or LED
- **Terminals** : Solder/quick connect 2.8mm (0.110)

GENERAL SPECIFICATIONS

- **Operating Temperature** : -20°C to +55°C
- **Solder Heat Resistance** : 350°C for 5 seconds
- **Sealing** : Panel sealed to IP65, rear of panel IP40

MATERIALS

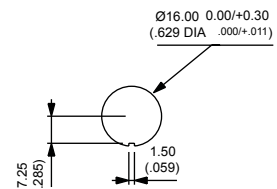
- **Key** : Nickel plated steel
- **Key Barrel** : Chrome plated alloy
- **Operator** : PBT
- **Nut** : ABS
- **Camtrack Momentary** : PPE
- **Camtrack Maintained** : PPSU
- **Switch Block 1 & 2 pole** : PBT
- **Switch Block 3 & 4 pole** : PEI
- **Contacts** : Gold plated silver

AGENCY APPROVALS

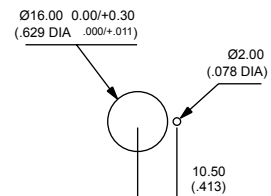


PANEL CUT OUT

Round & Square bezel operators only

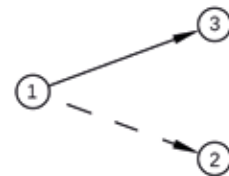


Rectangular bezel operators only



Max panel thickness 8mm (0.314)

CIRCUIT



Dimensions : first dimensions are in mm while inches are shown in brackets. Refer to the following pages for further information.



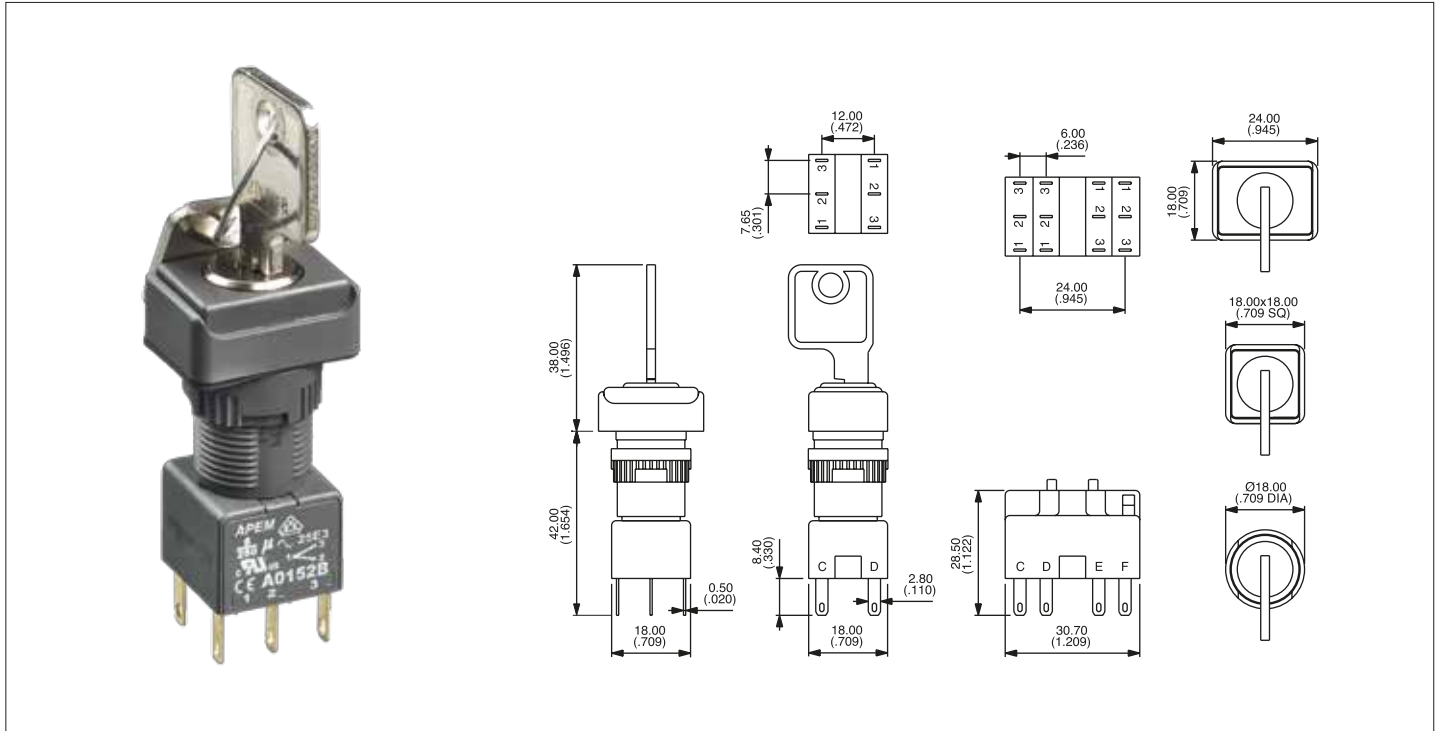
Mounting accessories : standard hardware 1 nut and 1 sealing washer.

A01 series

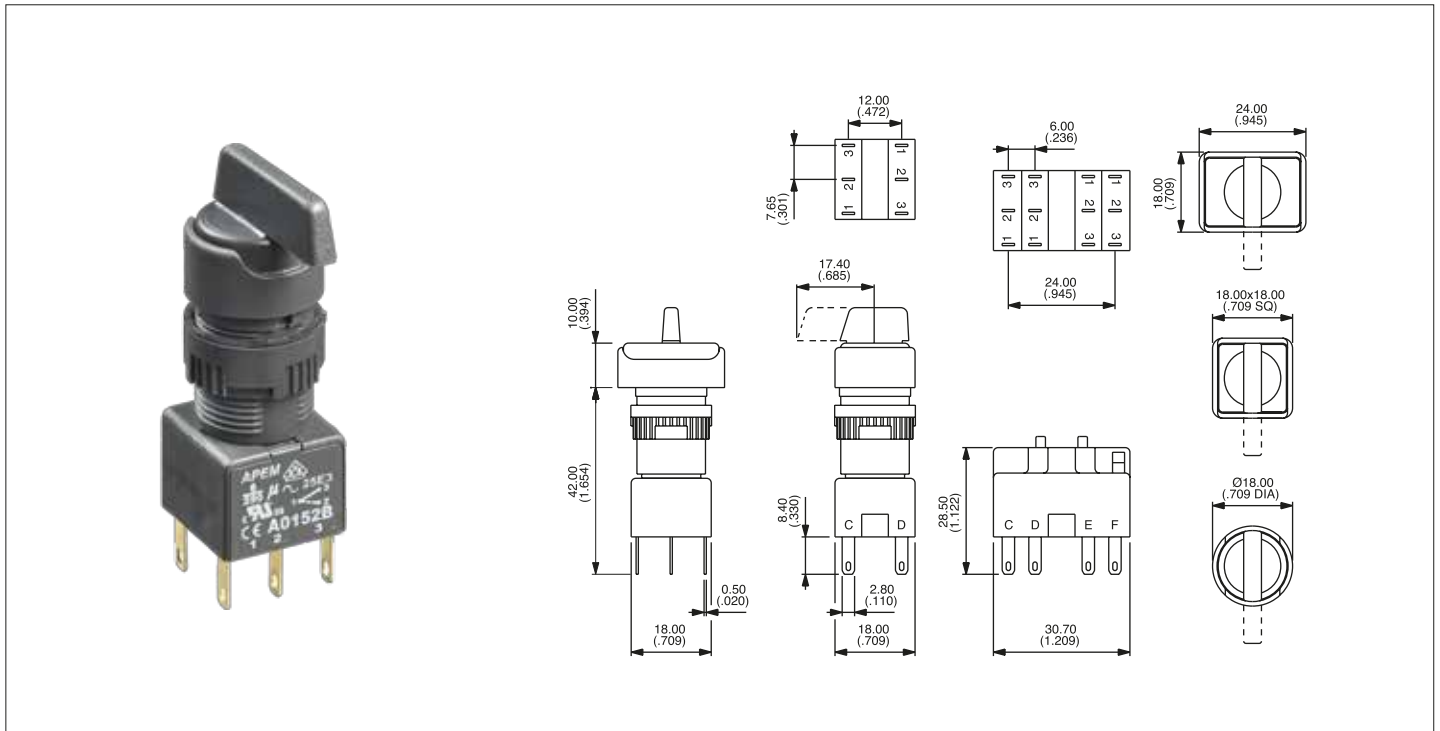
Keylock & selector switches

Panel cut-out $\varnothing 16$ (0.755)

Keylock



Selector



A01 series

Keylock & selector switches

Overview

Keylock

A

Operator			+		Switch block		Key position												
Pole	Bezel	Description	Part No.	Key removable	No of poles	Part No													
1 or 2	□	2 pos. maintained	A018125	A-B	Single pole	A0151B	<p>Clockwise Rotation A B C Anticlockwise Rotation</p> <p>Key Rotation – 2 position switches</p> <p>The model numbers shown are for switches with clockwise key rotation. For anticlockwise rotation, replace :</p> <table border="0"> <tr><td>25</td><td>with</td><td>01</td></tr> <tr><td>24</td><td>with</td><td>02</td></tr> <tr><td>27</td><td>with</td><td>03</td></tr> <tr><td>28</td><td>with</td><td>04</td></tr> </table> <p>at the end of the model number</p>	25	with	01	24	with	02	27	with	03	28	with	04
25	with	01																	
24	with	02																	
27	with	03																	
28	with	04																	
1 or 2	□	2 pos. momentary	A018124	A	Double pole	A0152B													
3 or 4	□	2 pos. maintained	A018127	A-B	Three pole	A0155B													
3 or 4	□	2 pos. momentary	A018128	A	Four pole	A0153B													
1 or 2	□	3 pos. maintained	A018105	A-B-C															
1 or 2	□	3 pos. momentary	A018106	A															
1 or 2	□	3 pos. mainL, momR	A018107	A-B															
1 or 2	□	3 pos. momL, mainR	A018108	A-C															
1 or 2	□	2 pos. maintained	A018225	A-B															
1 or 2	□	2 pos. momentary	A018224	A															
3 or 4	□	2 pos. maintained	A018227	A-B															
3 or 4	□	2 pos. momentary	A018228	A															
1 or 2	□	3 pos. maintained	A018205	A-B-C															
1 or 2	□	3 pos. momentary	A018206	A															
1 or 2	□	3 pos. mainL, momR	A018207	A-B															
1 or 2	□	3 pos. momL, mainR	A018208	A-C															
1 or 2	○	2 pos. maintained	A018325	A-B															
1 or 2	○	2 pos. momentary	A018324	A															
3 or 4	○	2 pos. maintained	A018327	A-B															
3 or 4	○	2 pos. momentary	A018328	A															
1 or 2	○	3 pos. maintained	A018305	A-B-C															
1 or 2	○	3 pos. momentary	A018306	A															
1 or 2	○	3 pos. mainL, momR	A018307	A-B															
1 or 2	○	3 pos. momL, mainR	A018308	A-C															

Bezel: □ rectangular □ square ○ round. 'pos' - position, 'mainL' - maintained left 'momR' - momentary right, etc

Selector

Operator			+		Switch block		Lever position												
Pole	Bezel	Description	Short lever	Long lever	No of poles	Part No													
1 or 2	□	2 pos. maintained	A019209	A019109	Single pole	A0151B	<p>Clockwise Rotation 3 1 2 Anticlockwise Rotation</p> <p>Lever Rotation – 2 position switches</p> <p>The model numbers shown are for switches with clockwise key rotation. For anticlockwise rotation, replace :</p> <table border="0"> <tr><td>09</td><td>with</td><td>01</td></tr> <tr><td>10</td><td>with</td><td>02</td></tr> <tr><td>11</td><td>with</td><td>03</td></tr> <tr><td>12</td><td>with</td><td>04</td></tr> </table> <p>at the end of the model number</p> <p>Optional engraving on lever end add "WL" to the end of the part number</p>	09	with	01	10	with	02	11	with	03	12	with	04
09	with	01																	
10	with	02																	
11	with	03																	
12	with	04																	
1 or 2	□	2 pos. momentary	A019210	A019110	Double pole	A0152B													
3 or 4	□	2 pos. maintained	A019211	A019111	Three pole	A0155B													
3 or 4	□	2 pos. momentary	A019212	A019112	Four pole	A0153B													
1 or 2	□	3 pos. maintained	A019205	A019105															
1 or 2	□	3 pos. momentary	A019206	A019106															
1 or 2	□	3 pos. mainL, momR	A019207	A019107															
1 or 2	□	3 pos. momL, mainR	A019208	A019108															
1 or 2	□	2 pos. maintained	A019409	A019309															
1 or 2	□	2 pos. momentary	A019410	A019310															
3 or 4	□	2 pos. maintained	A019411	A019311															
3 or 4	□	2 pos. momentary	A019412	A019312															
1 or 2	□	3 pos. maintained	A019405	A019305															
1 or 2	□	3 pos. momentary	A019406	A019306															
1 or 2	□	3 pos. mainL, momR	A019407	A019307															
1 or 2	□	3 pos. momL, mainR	A019408	A019308															
1 or 2	○	2 pos. maintained	A019609	A019509															
1 or 2	○	2 pos. momentary	A019610	A019510															
3 or 4	○	2 pos. maintained	A019611	A019511															
3 or 4	○	2 pos. momentary	A019612	A019512															
1 or 2	○	3 pos. maintained	A019605	A019505															
1 or 2	○	3 pos. momentary	A019606	A019506															
1 or 2	○	3 pos. mainL, momR	A019607	A019507															
1 or 2	○	3 pos. momL, mainR	A019608	A019508															

Bezel: □ rectangular □ square ○ round. 'pos' - position, 'mainL' - maintained left 'momR' - momentary right, etc



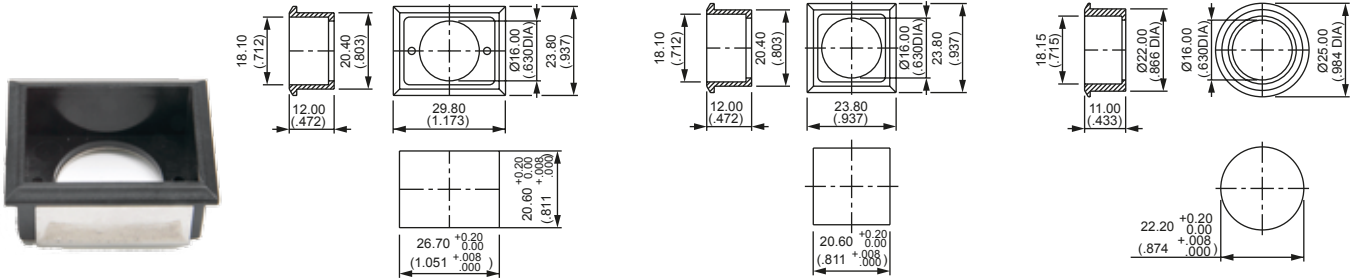
Unsealed switches & indicators (IP40) suffix 01 to the end of the part number.
Screen engraving insertable legends, & bi-color LED's please contact APEM

A01 series Keylock & selector switches

Accessories

Flush mount bezels

Dark grey plastic material – supplied with sealing washer

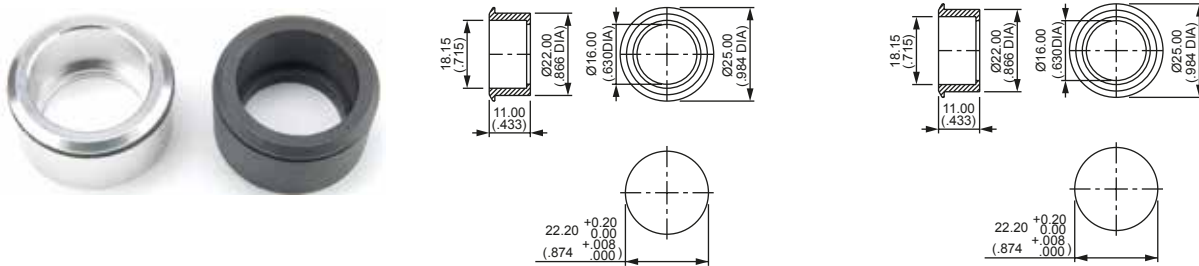


Rectangular : A01FM1

Square : A01FM

Round : A01FM2

Anodised aluminium/matt black



Round natural anodised : A01FMM

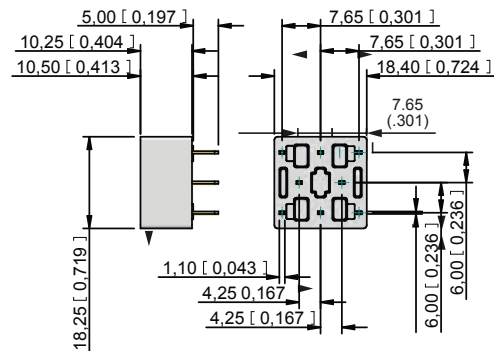
Round matt black : A01FMMG

PCB Sockets

Number of Poles

Part No.

Single pole, non illuminated :	A01PC1
Double pole, non illuminated :	A01PC2
Single pole, illuminated :	A01PC3
Double pole, illuminated :	A01PC4
Indicator :	A01PC5



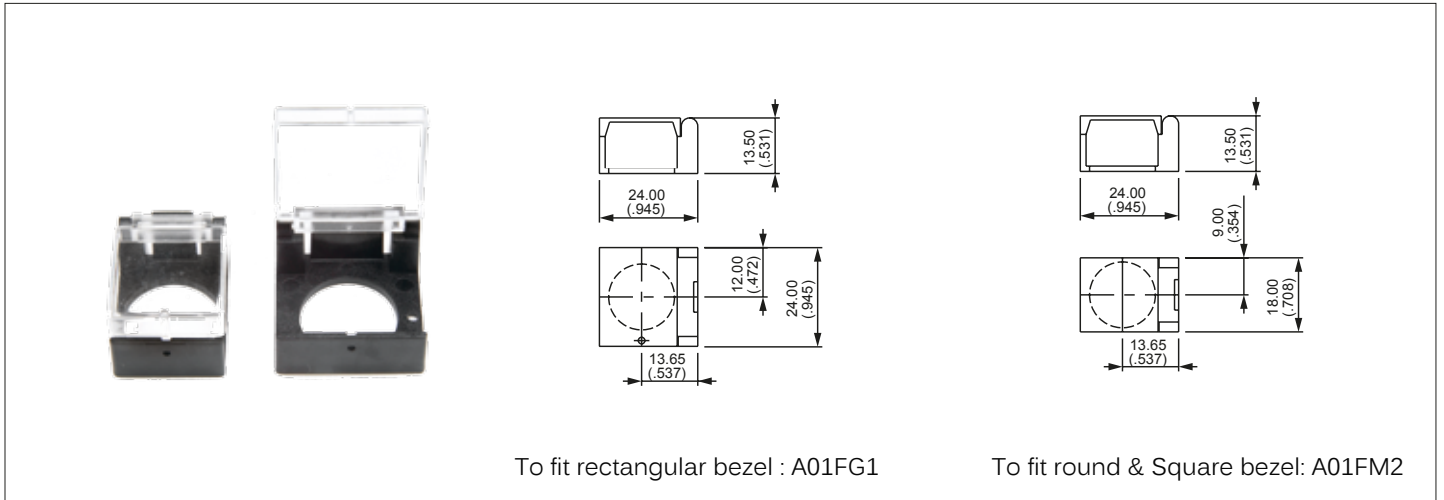
Dimensions : first dimensions are in mm while inches are shown in brackets.
Refer to the following pages for further information.

A01 series

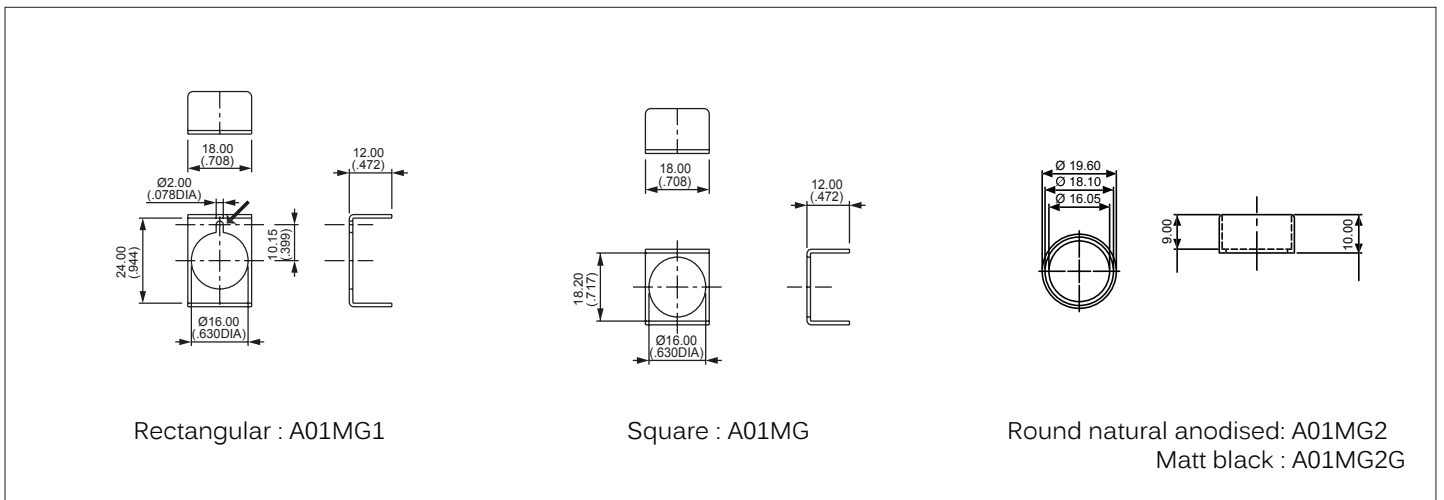
Keylock & selector switches

Accessories

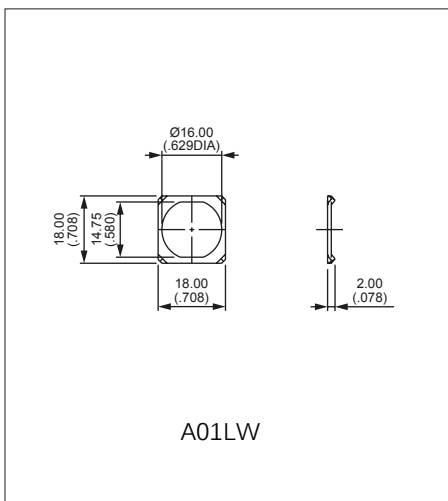
Flap guards



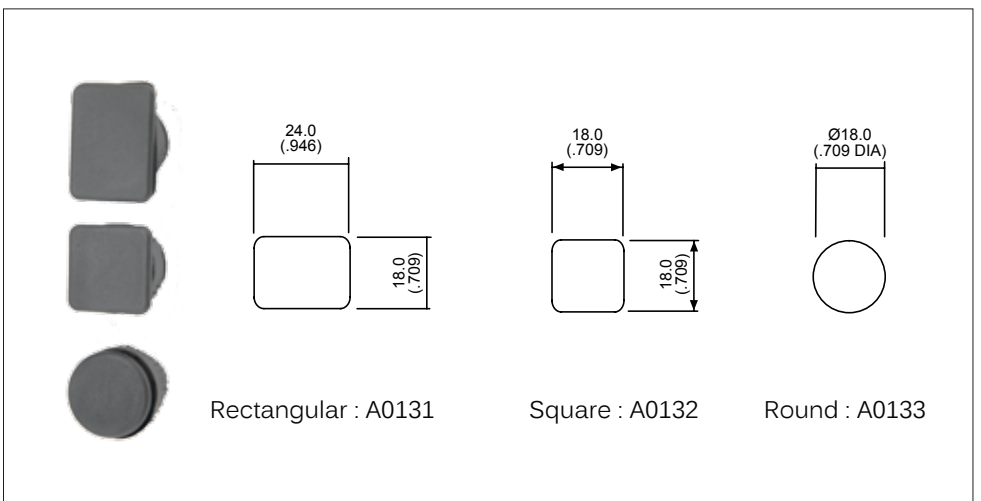
Alluminium bezel protection guards



Anti rotation ring



Blanking plugs



A01 series

Keylock & selector switches

Installation & tools

Installation guide

SWITCH BLOCK ASSEMBLY

To assemble switch block to the operator, firstly, take care to line up the switch block with the back of the operator. Once in position slide on to the back of the operator. N.B. Ensure latch is fully engaged correctly onto the switch block. To remove switch block, depress the latch and slide the switch block off the operator.

PANEL MOUNTING ASSEMBLY

- Drill/punch hole shaped as shown on page one.
- Assemble front operator through hole, fit fixing nut and tighten to a maximum torque of 0.8Nm using tool No. 30-0001.
- Wire chosen switch block as required and slide onto operator until latch engages.
- Fit bulb if required using tool No. 30-0002.
- Snap screen onto reflector assembly with legend in between if required and snap onto front operator, take care to line up the locating slot with the polarising dot and not to damage the internal seal
- To place/remove the bulb use the bulb extractor 30-0002.

Tools

