

IM series

Sealed snap-action pushbutton switches •
bushing Ø 12 mm • momentary



DISTINCTIVE FEATURES

Snap-action : tactile feedback with audible click

High current/voltage rating

Sealed to IP67

Flat round actuator for optional marking

NO+NC



ENVIRONMENTAL SPECIFICATIONS

- Front panel sealing : IP67 according to IEC 60529
- Shock resistance : 50 g - 11 ms according to IEC 68-2-27
- Salt spray : IEC 512-6, test 11f
- Operating temperature : -40 °C to +85 °C (-40 °F to +185 °F)
- Storage temperature : -40 °C to +85 °C (-40 °F to +185 °F)



ELECTRICAL SPECIFICATIONS

- Max. current/voltage rating with resistive load : 3 A 28 VDC
- Initial contact resistance : 100 mΩ max.
- Insulation resistance : 1 GΩ min. at 500 VDC
- Dielectric strength : 500 Vrms between terminals
- Electrical life at full load : 25,000 cycles



GENERAL SPECIFICATIONS

- Panel thickness : 1.5 mm (.059) to 10 mm (.394)
- Total travel : 1.7 mm (.067) ± 0.3 mm
- Low level or mechanical life : 1,000,000 cycles
- Torque (applied to nut) : 1 Nm max. with metal nut U166
1.5 Nm max. with plastic nut U4248



MATERIALS

- Case : polyamide 4/6
- Actuator : polyamide 6/6
- Bushing/bezel : polyamide 6/6
- Contacts : silver, gold plated
- Terminal seal : epoxy

The company reserves the right to change specifications without notice.



IM series

Sealed snap-action pushbutton switches •
bushing Ø 12 mm • momentary

AGENCY APPROVAL



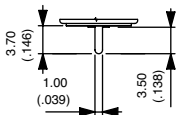
1 A 125 VAC/250 VAC
File E83438

Availability: consult factory for details of approved models.

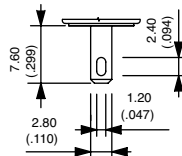
Marking: to order switches marked UL, complete appropriate box of ordering format.



TERMINALS



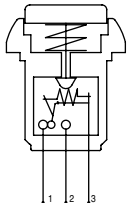
Straight P



Quick-connect Z



ELECTRICAL FUNCTIONS

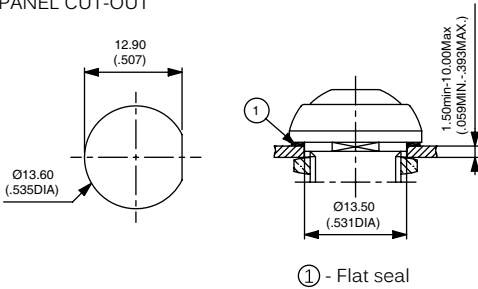


Function 7 (NC+NO)

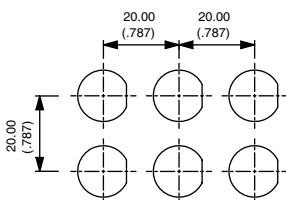


MOUNTING STANDARD BEZEL

PANEL CUT-OUT

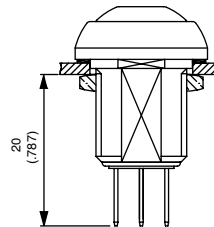


MATRIX MOUNTING



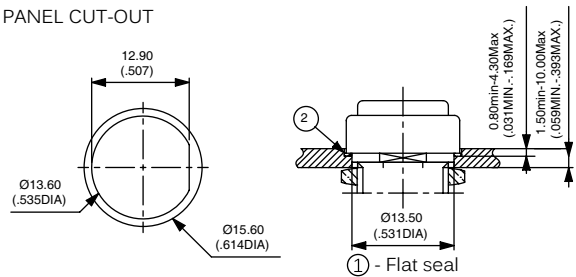
MOUNTING STANDARD BEZEL (CONTINUED)

BACK OF PANEL SPACE REQUIREMENT

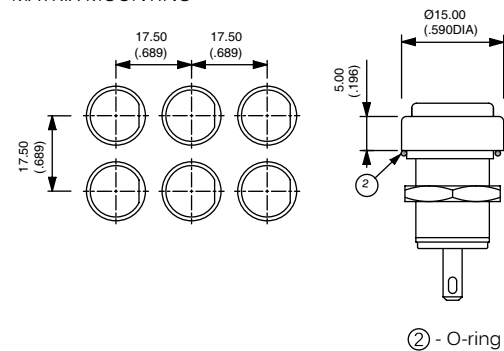


MOUNTING REDUCED BEZEL

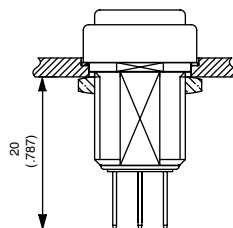
PANEL CUT-OUT



MATRIX MOUNTING



BACK OF PANEL SPACE REQUIREMENT

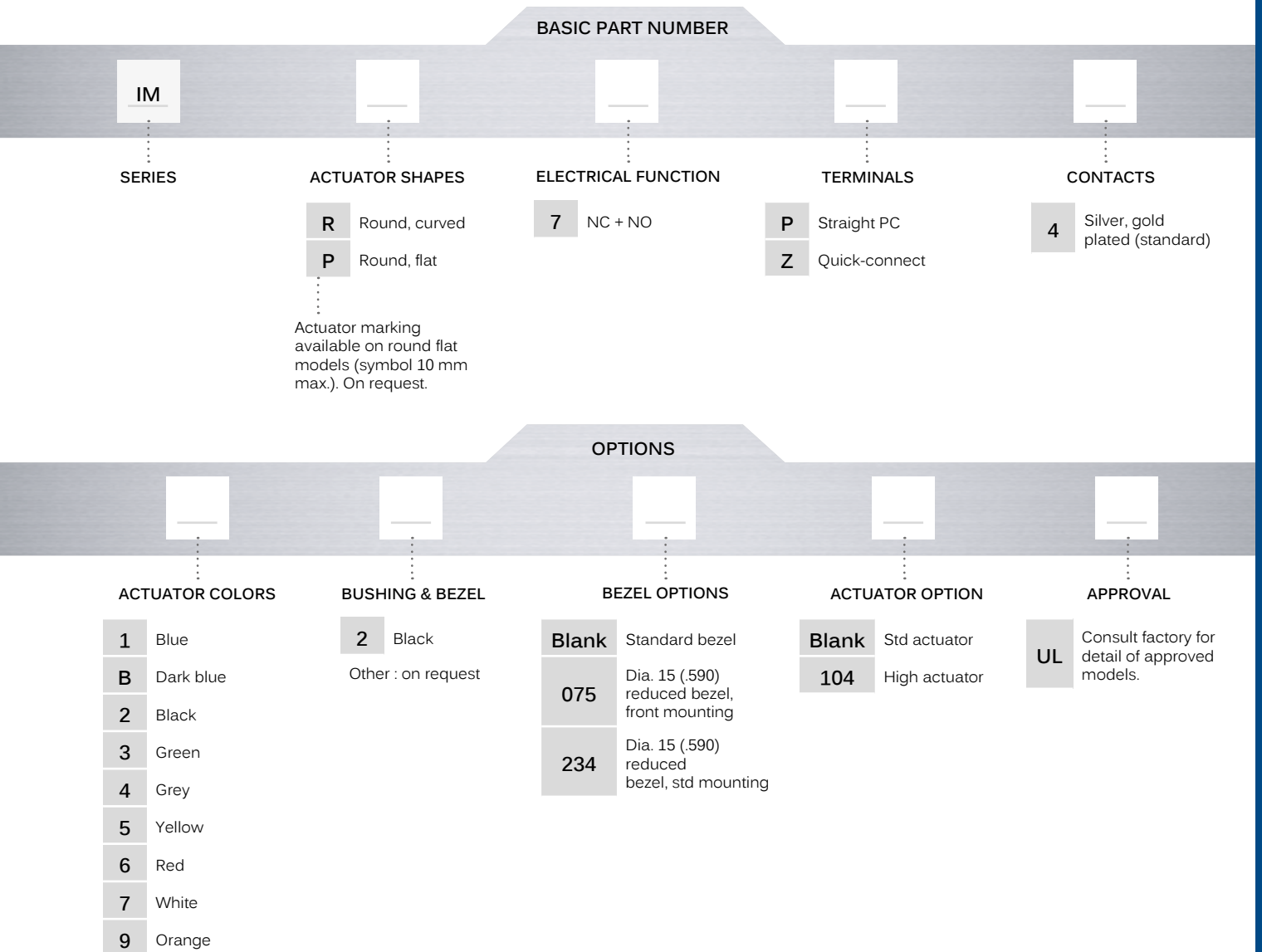


IM series

Sealed snap-action pushbutton switches •
bushing Ø 12 mm • momentary



BUILD YOUR PART NUMBER



ABOUT THIS SERIES

On the following pages, you will find successively basic part numbers of switches and options in the same order as in above chart.

- ⚠ **Notice** : please note that not all combinations of above numbers are available. Refer to the following pages for further information.
- 🔒 **A sealing boot** is available to protect the switches against frost and sand (P/N U5125). See "Sealing Boots" section of website.
- 🔩 **Mounting accessories** : Standard hardware supplied : 1 flat seal (standard bezel) or 1 O-ring (reduced bezel) and 1 metal hex nut 14 mm (.551) across flats. Hex nut part number U166. Plastic nut 17 mm (.669) across flats, thickness 4 mm (.157) available on request. Part number U4248.

IM series

Sealed snap-action pushbutton switches •
bushing Ø 12 mm • momentary

STANDARD BEZEL STRAIGHT PC TERMINALS



Curved actuator
IMR7P4 NC+NO

Flat actuator
IMP7P4 NC+NO

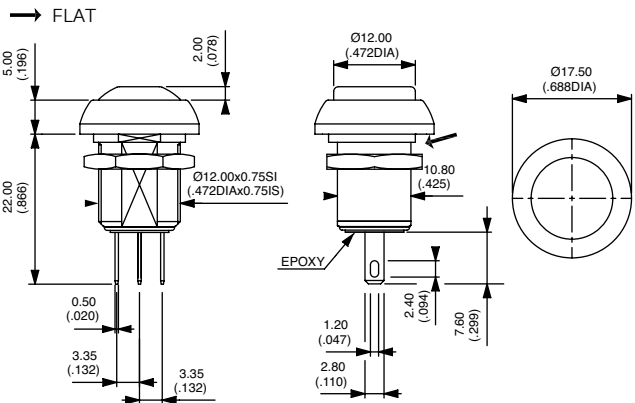
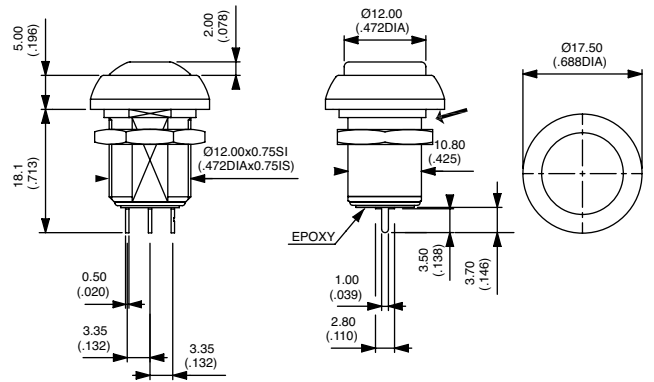
STANDARD BEZEL QUICK-CONNECT TERMINALS



Curved actuator
IMR7Z4 NC+NO

Flat actuator
IMP7Z4 NC+NO

Common terminal identified by a horizontal dash
→ FLAT



ACTUATOR COLORS



- 1 Blue
- B Dark blue
- 2 Black
- 3 Green
- 4 Grey
- 5 Yellow
- 6 Red
- 7 White
- 9 Orange

BUSHING AND BEZEL

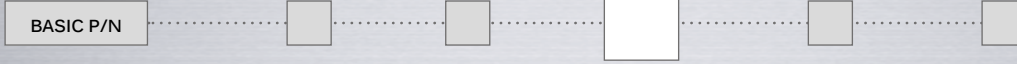


- 2 Black (standard)
- Other : on request

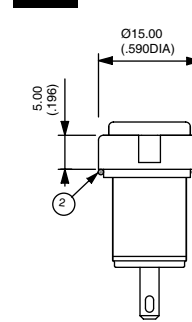
IM series

Sealed snap-action pushbutton switches •
bushing Ø 12 mm • momentary

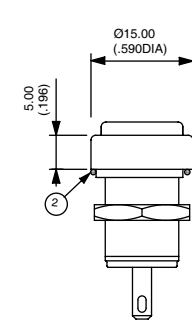
BEZEL OPTIONS



- Blank** Standard bezel
- 075** Dia. 15 (.590) reduced bezel, mounting of the switch from the front into a threaded panel cut-out
- 234** Dia. 15 (.590) reduced bezel, standard mounting

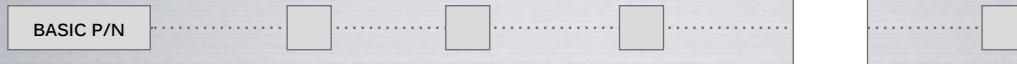


075

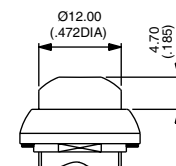


234

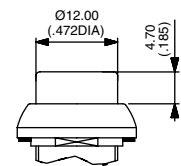
ACTUATOR OPTION



- Blank** Standard actuator
- 104** High actuator

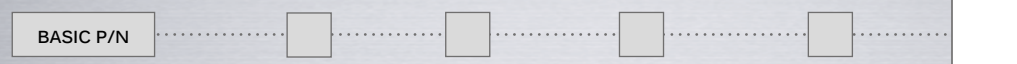


104 IMR



104 IMP

AGENCY APPROVAL



UL

Availability : consult factory for details of approved models.

Marking : to order switches marked UL, complete appropriate box of ordering format.