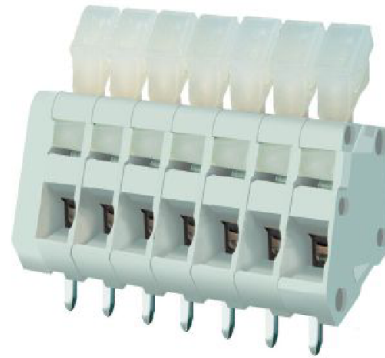


EM2802 Series
EuroMag Terminal Blocks
 30° Entry; Screwless; 2.54 Centers

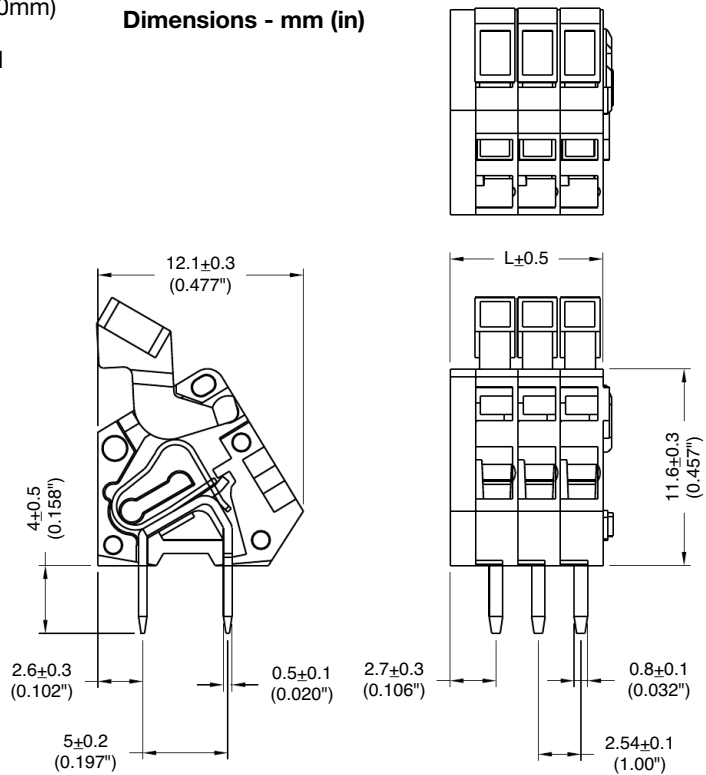
SPECIFICATIONS

Rating: 4A, 150V
Center Spacing: 0.10" (2.54mm)
Wire Range: #20-28 AWG
Housing Material: Gray Polyamide Type 6/6, 94V0
Contact Material: Tin-Plated Brass
Spring Material: Stainless Steel
Operating Temperature: 105°C (221°F) max., -40°C (-40°F) min.
Recommended PCB Hole Diameters: 0.051" (1.30mm)
Construction: Mold-to-Length
Agency Information: File E62622; CE Certified



EM280207

Dimensions - mm (in)



Poles	L (mm)
2	7.08
3	9.62
4	12.16
5	14.70
6	17.24
7	19.78
8	22.32
9	24.86
10	27.40
11	29.94
12	32.48

To convert to inches, divide by 25.4

Part Numbering System

Series # of Poles

EM2802

02 to 12

Terminal Blocks:
Single Row

EuroMag Series
Screwless

Edge Connectors,
One-Sided Boards

Compliance
References