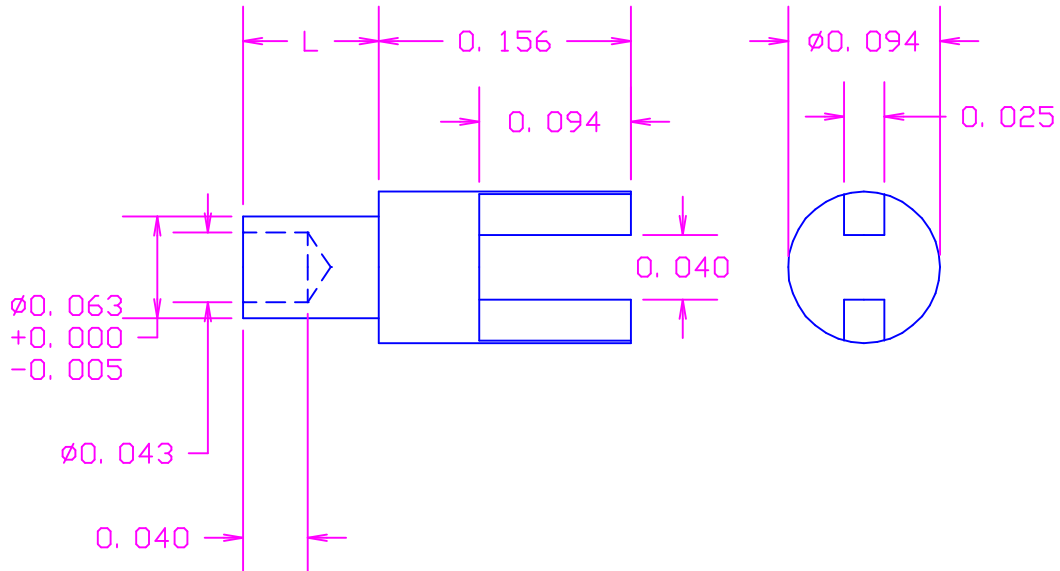


DATE	SYM	REVISION RECORD	AUTH.	DR.	CK.
2/11/99	-	ISSUED		NT	DG



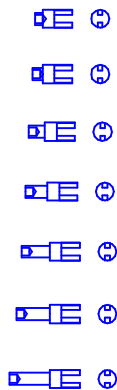
RECOMMENDED MOUNTING HOLE .0635 DIA.(#52 DRILL)

MATERIAL: BRASS PER ASTM B16,  
ALLOY C 36000, 1/2 HARD

FINISH: .0003"MIN. SILVER PER QQ-S-365,  
TYPE II, GRADE A WITH NON-CHROMATE  
PRESERVATIVE

PART NUMBER:	L	T
12-459-11	.037	1/64
12-459-1	.053	1/32
12-459-2	.084	1/16
12-459-3	.115	3/32
12-459-4	.147	1/8
12-459-5	.178	5/32
12-459-6	.209	3/16

ACTUAL SIZE



TOLERANCES	CONCORD ELECTRONICS CORPORATION		
DECIMAL $\pm .005$	P/N	SCALE	30 GREAT JONES ST. NEW YORK N. Y. 10012
FRACTIONAL $\pm 1/64$	TITLE TERMINAL		
$\pm 5^\circ$	DATE 2/11/99	DRAWING NUMBER 12-459-X-01	