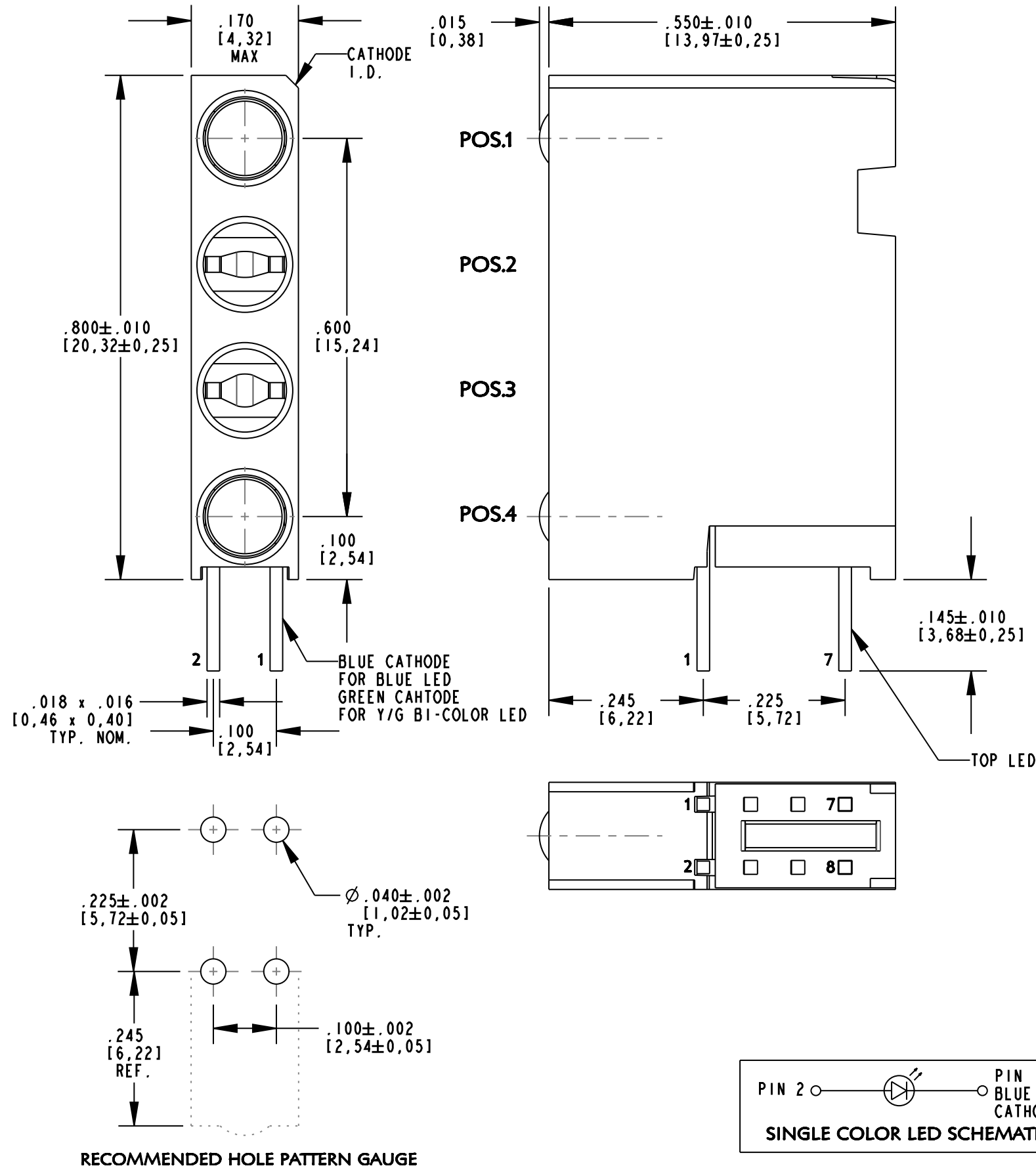


DIALIGHT PART NUMBER	LED COLOR			
	POSITION 1	POSITION 2	POSITION 3	POSITION 4
568-0714-833F	YELLOW/GREEN	BLANK	BLANK	BLUE

RoHS COMPLIANT 568-0714-833F
 Part Numbers with the "F" suffix ending are RoHS Compliant. Packaging is marked with "RoHS Compliant" label or equivalent markings. Parts can be wave soldered, dip soldered or hand soldered using typical lead-free soldering process with max 260°C temp. for 5 sec.

REV	ECN NO	REVISIONS	DRN	CKD	APP	DATE
A		NEW RELEASE	AJF	KLJ	NO	6-15-11



OPERATING CHARACTERISTICS AT 25°C AMBIENT												
LED COLOR	PEAK WAVELENGTH (nm)	DOMINANT WAVELENGTH (nm)		LUMINOUS INTENSITY (mcd) @ I _f =10mA			FORWARD VOLTAGE (V) @ I _f =10mA			REVERSE CURRENT (μA)	VIEWING ANGLE (DEGREES)	
		MIN	TYP	MAX	MIN	TYP	MAX	MIN	TYP	MAX	TYP	
BLUE	468	460	470	475	23.0	—	65.0	2.0	2.7	3.5	100 @ V _r =5V	100
YELLOW	585	583	588	593	3.0	—	8.5	—	2.1	2.6	100 @ V _r =5V	80
GREEN	565	564	569	574	6.5	—	18.0	—	2.1	2.6	100 @ V _r =5V	80

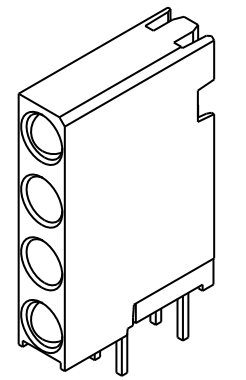
ABSOLUTE MAXIMUM RATINGS AT 25°C AMBIENT				
	BLUE	YELLOW	GREEN	UNITS
POWER DISSIPATION	120	60	100	mW
PEAK FORWARD CURRENT (1/10 DUTY CYCLE, 0.1ms PULSE WIDTH)	100	80	120	mA
CONTINUOUS FORWARD CURRENT	30	20	30	mA
LINEAR DERATING FROM 50°C (FROM 30°C FOR BLUE)	0.5	0.25	0.40	mA/°C
REVERSE VOLTAGE	5	5	5	V
LEAD SOLDERING TEMPERATURE (.079" [2.0mm] FROM BODY) FOR 5 SEC.	260	260		°C
OPERATING TEMPERATURE	-40 TO +85	-55 TO +100		°C
STORAGE TEMPERATURE	-45 TO +100	-55 TO +100		°C

NOTES:

- LED LEAD DIMENSIONS SHOWN ARE MEASURED AT HOUSING EXIT.
- LEADS TO FIT INTO HOLES SPACED AS PER PATTERN.
- PIN NUMBERS FOR REFERENCE ONLY, DESIGNATION NON-EXISTENT ON PART.
- DIALIGHT PART NUMBERS: 568-0714-833F.
- THIS ASSEMBLY CONTAINS ELECTROSTATIC DISCHARGE SENSITIVE DEVICES (ESDS). MAINTAIN ALL PRECAUTIONARY MEASURES DURING ASSEMBLY, HANDLING, AND STORAGE IN ACCORDANCE WITH IPC-A-610.



ATTENTION:
 OBSERVE PRECAUTIONS FOR
 HANDLING ELECTROSTATIC
 SENSITIVE DEVICES



SCALE 2.000

THIS DRAWING AND THE CONTENTS HEREIN ARE CONFIDENTIAL AND THE SOLE PROPERTY OF DIALIGHT. REPRODUCTION OF THIS DRAWING OR CONSTRUCTION OF ANY PARTS WITHIN THIS DRAWING ARE FORBIDDEN WITHOUT THE WRITTEN CONSENT OF DIALIGHT.		
SCALE: 5.000	DRAWING NUMBER	REV
ALL DIM'S IN: INCHES (MM)	C-17926	A
TOLERANCES: UNLESS OTHERWISE SPECIFIED	TITLE	
FRACTIONS: ±1/64	QUAD HIGH CBI BLOCK	
DECIMALS (.XX): ±.02	Y/G, X, X, B	
DECIMALS (.XXX): ±.015	MATERIAL	
ANGLES: ±1°	-	
FINISH:	-	
FSCM 83330	Dialight	1501 ROUTE 34 SOUTH FARMINGDALE, NJ 07727
SHEET 1 OF 1	FAMILY TABLE:	