



Certifications & Ratings

- RoHS compliant

Application

The 608 Series LED Panel Mount Indicators are designed for a variety of applications such as.

- Main power indication
 - Remote power indication
 - Status indication
 - Maintenance and warning indication
 - Instrumentation
- ... and many more!

Dimensions

inches [mm]

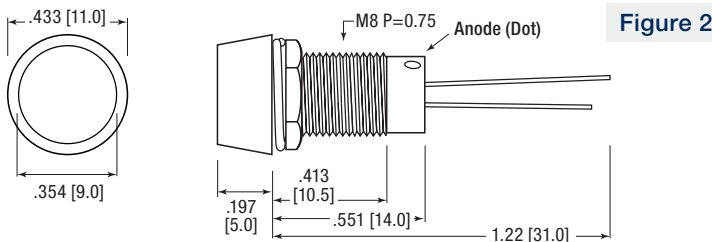
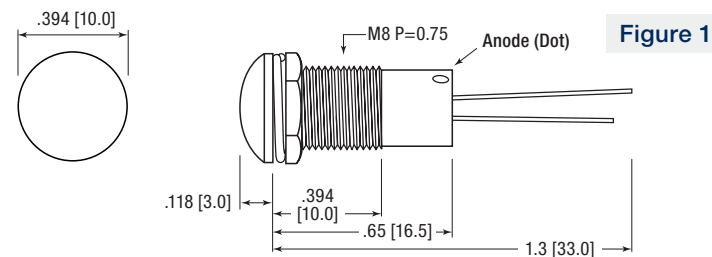


Figure 3

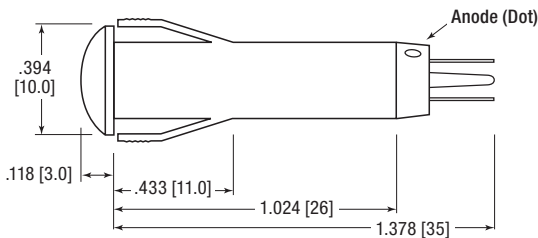
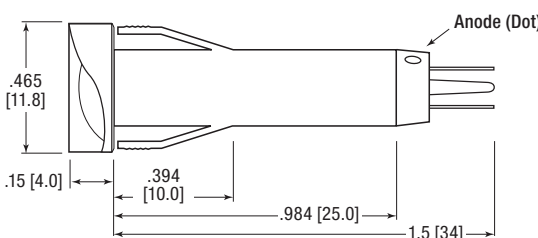
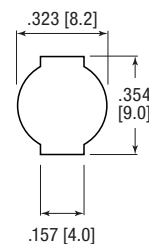


Figure 4



**Fig 3 & 4
Mounting Hole**



Mechanical Information

Mounting Hole Size: 0.323" (8.2 mm) (Fig. 1 & 2),
Snap-Fit see Fig. 3 & 4

Max Panel Thickness: See part numbers

Mounting Torque: 0.217 lbs/ft or 3 kg/cm (Fig. 1 & 2 only)

Specifications

Voltage Options: 2 VDC (resistor required)
6, 12 & 24 VDC (no resistor required)

Operating Temp: -25 °C to +85 °C (-13 °F to +185 °F)

Storage Temp: -25 °C to +85 °C (-13 °F to +185 °F)

Electrical Connection: Leads (Fig. 1 & 2),
Solder terminals (Fig. 3 & 4)

Housing: Polycarbonate

Terminals: Copper – Nickel Plated

Lock Washer: Iron – Nickel Plated

Nut: Brass – Nickel Plated

Ordering Information 608 Series

| Part Number | Color | Voltage (V DC) | Current (mA) | Typical Intensity (mcd) | Lens Shape | Figure | Panel Thickness |
|-------------|-------|----------------|--------------|-------------------------|------------|--------|-----------------|
|-------------|-------|----------------|--------------|-------------------------|------------|--------|-----------------|

Lock Washer & Nut

| | | | | | | | |
|---------------|----------|---|----|----|-------|---|------------------|
| 608-1131-110F | ● Red | 2 | 15 | 25 | Domed | 1 | 0.236" (6 mm) |
| 608-1231-110F | ● Green | | | 30 | | | |
| 608-1331-110F | ● Yellow | | | 15 | | | |
| 608-3131-110F | ● Red | | | 25 | Flat | 2 | |
| 608-3231-110F | ● Green | | | 30 | | | |
| 608-3331-110F | ● Yellow | | | 15 | | | |

Snap-Fit

| | | | | | | | |
|---------------|----------|----|-----|-----|-------|---|------------------|
| 608-1132-220F | ● Red | 6 | 15 | 75 | Domed | 3 | 0.197" (5 mm) |
| 608-1232-220F | ● Green | | | 140 | | | |
| 608-1332-220F | ● Yellow | | | 120 | | | |
| 608-1132-230F | ● Red | 12 | | 75 | | | |
| 608-1232-230F | ● Green | | | 140 | | | |
| 608-1332-230F | ● Yellow | | | 120 | | | |
| 608-1132-240F | ● Red | 24 | | 75 | | | |
| 608-1232-240F | ● Green | | | 140 | | | |
| 608-1332-240F | ● Yellow | | | 120 | | | |
| 608-2132-220F | ● Red | 6 | | 75 | Flat | 4 | |
| 608-2232-220F | ● Green | | | 130 | | | |
| 608-2332-220F | ● Yellow | | | 115 | | | |
| 608-2132-230F | ● Red | 12 | | 75 | | | |
| 608-2232-230F | ● Green | | | 130 | | | |
| 608-2332-230F | ● Yellow | | | 115 | | | |
| 608-2132-240F | ● Red | 24 | 75 | | | | |
| 608-2232-240F | ● Green | | 130 | | | | |
| 608-2332-240F | ● Yellow | | 115 | | | | |

Dialight reserves the right to make changes at any time in order to supply the best product possible. The most current version of this document will always be available at: www.dialightsignalsandcomponents.com

Warranty Statement: Except for the warranty expressly provided for [herein/above/below], Dialight disclaims any and all other warranties, express or implied, including, without limitation, any warranties of merchantability, fitness for a particular purpose, title, and noninfringement.