

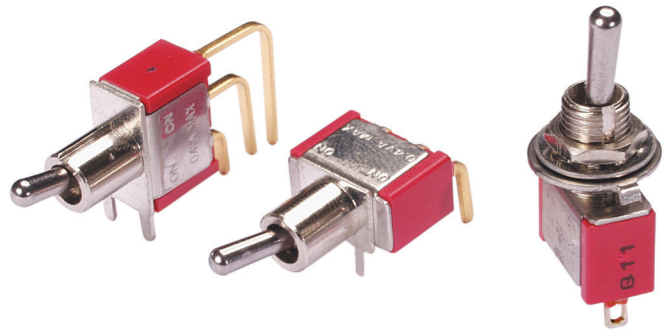


Series 34A: Miniature Toggle Switches

SERIES 34A Miniature Toggle Switches

FEATURES

- Save Space and Weight
- SPDT, DPDT, 3PDT, and 4DPT Circuitry
- Choice of Actuators, Bushings and Terminations
- UL Recognized

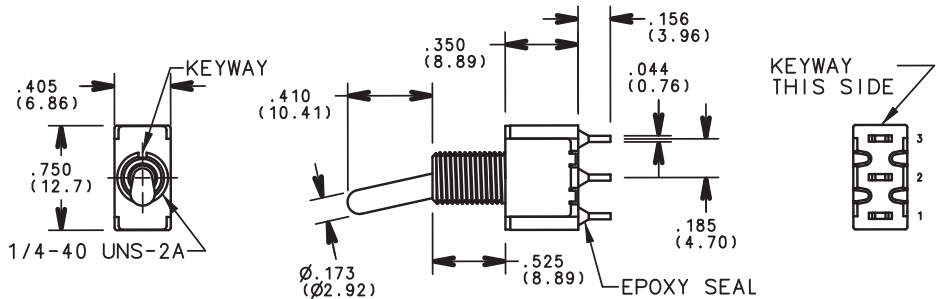


MODELS in inches (and millimeters)

SPDT

MODEL NO.	SWITCH POSITION		
SP1	ON	NONE	ON
SP2	ON	NONE	(ON)
SP3	ON	OFF	ON
SP4	(ON)	OFF	(ON)
SP5	ON	OFF	(ON)
TERM. COMM.	2-3	OPEN	2-1

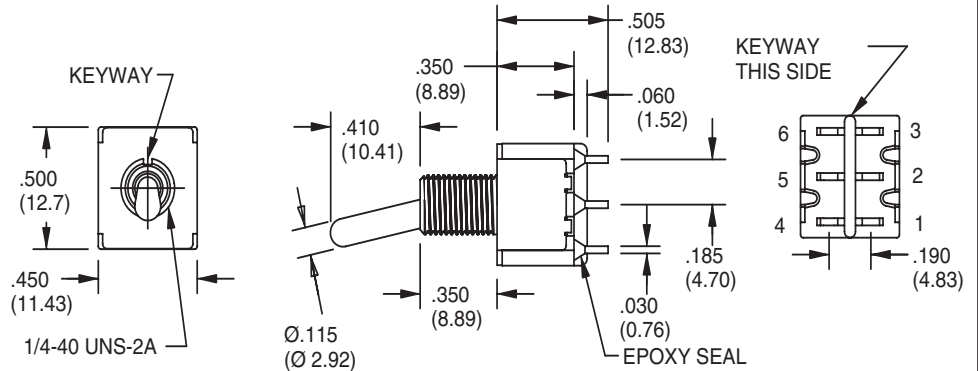
()=MOMENTARY



DPDT

MODEL NO.	SWITCH POSITION		
DP1	ON	NONE	ON
DP2	ON	NONE	(ON)
DP3	ON	OFF	ON
DP4	(ON)	OFF	(ON)
DP5	ON	OFF	(ON)
TERM. COMM.	2-3, 5-6	OPEN	2-1, 5-4

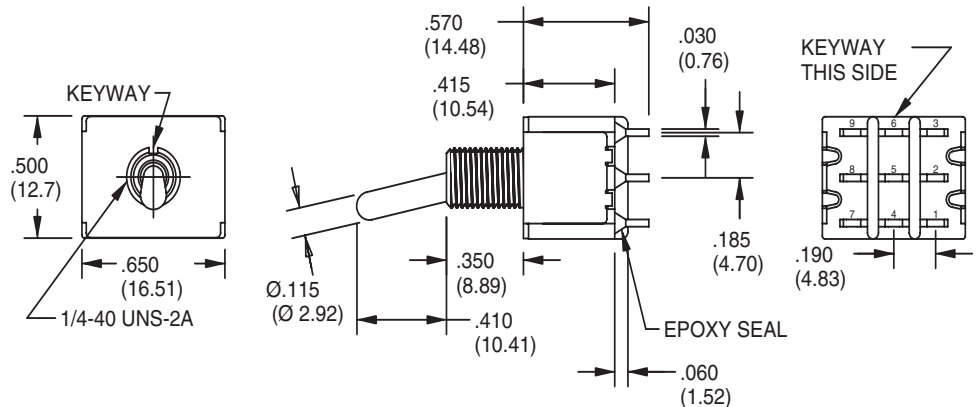
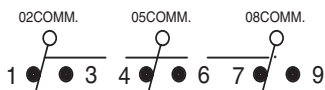
()=MOMENTARY



3PDT

MODEL NO.	SWITCH POSITION		
3P1	ON	NONE	ON
3P2	ON	NONE	(ON)
3P3	ON	OFF	ON
3P4	(ON)	OFF	(ON)
3P5	ON	OFF	(ON)
TERM. COMM.	2-3,5-6, 8-9	OPEN	2-1,5-4, 8-7

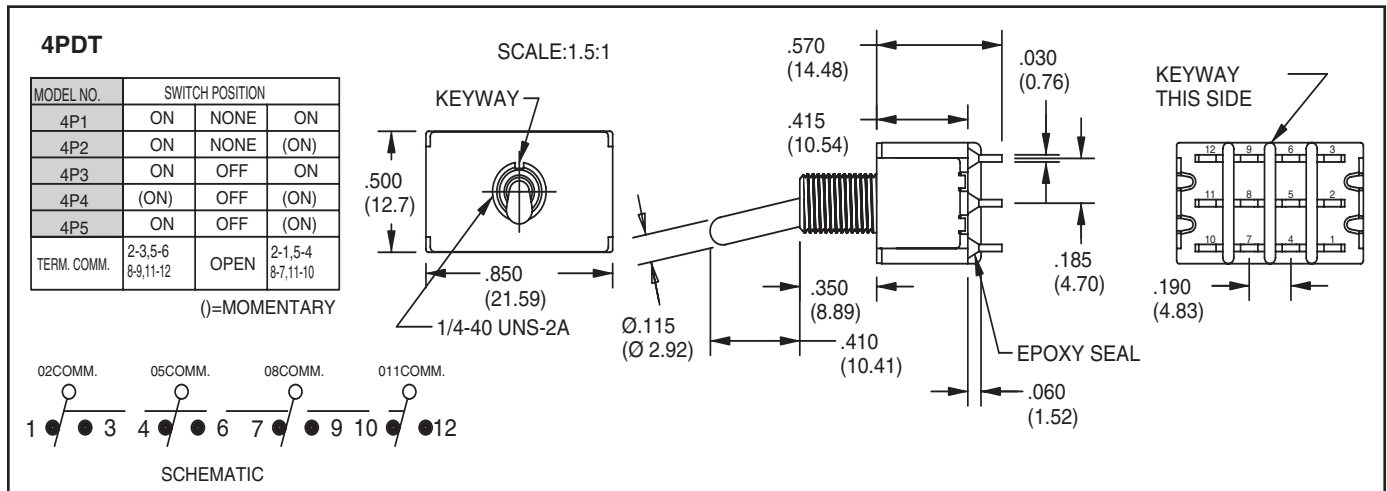
()=MOMENTARY



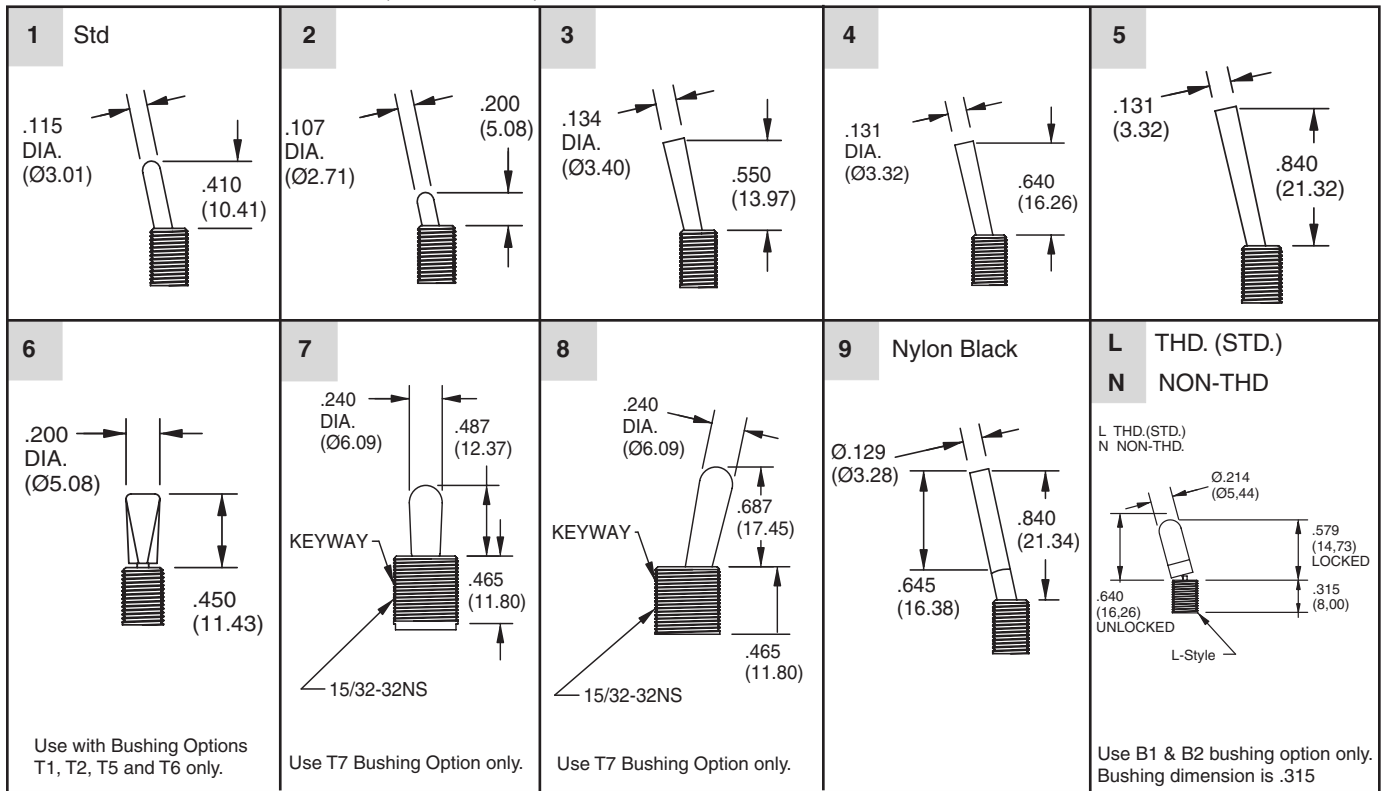
Series 34A: Miniature Toggle Switches



MODELS in inches (and millimeters)



ACTUATOR OPTIONS in inches (and millimeters)



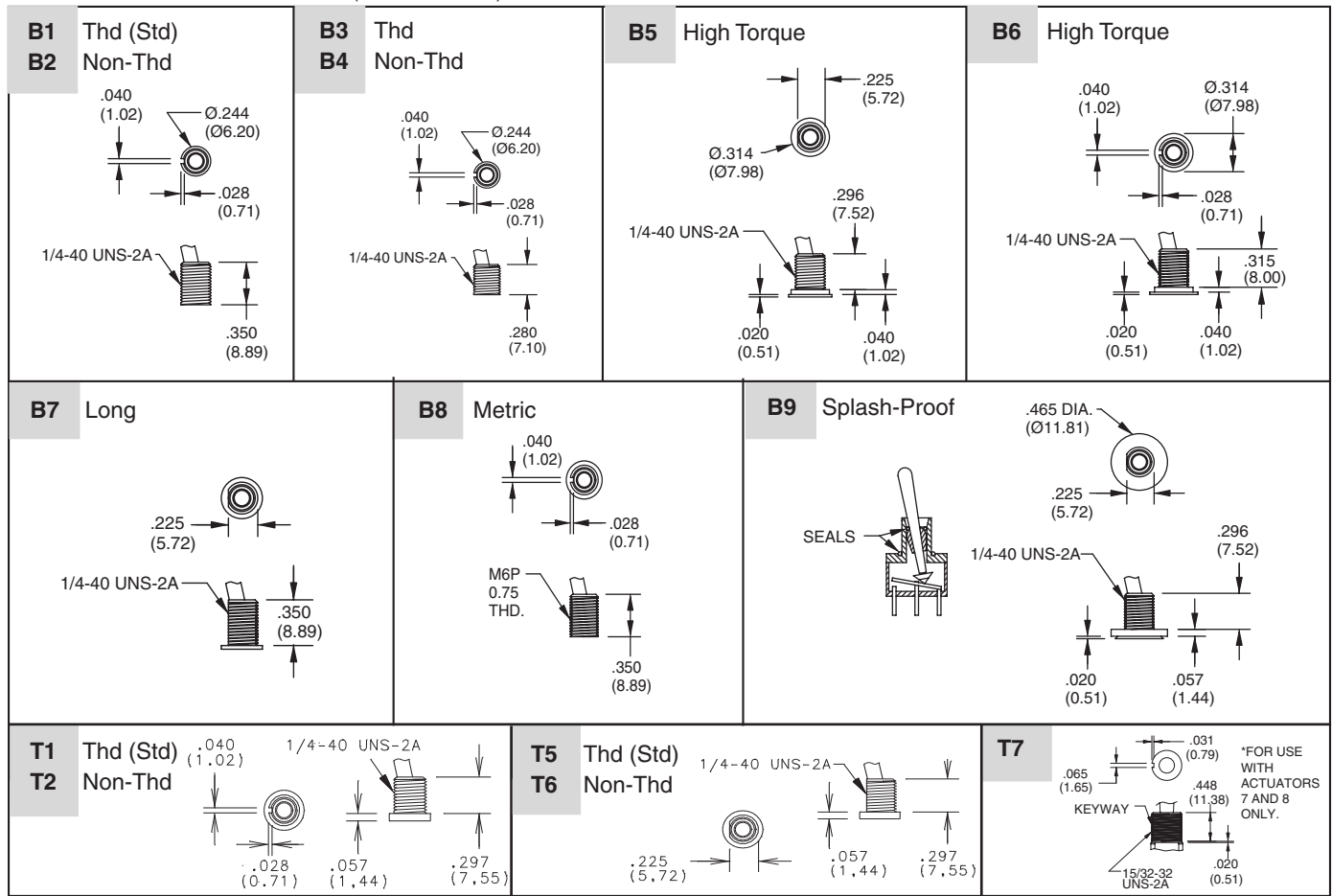
Actuators 1-5 shown with standard B1 bushing. Add .070 (1.78) for B3, subtract .020 (0.51) for B6 bushing.

Toggle Switches

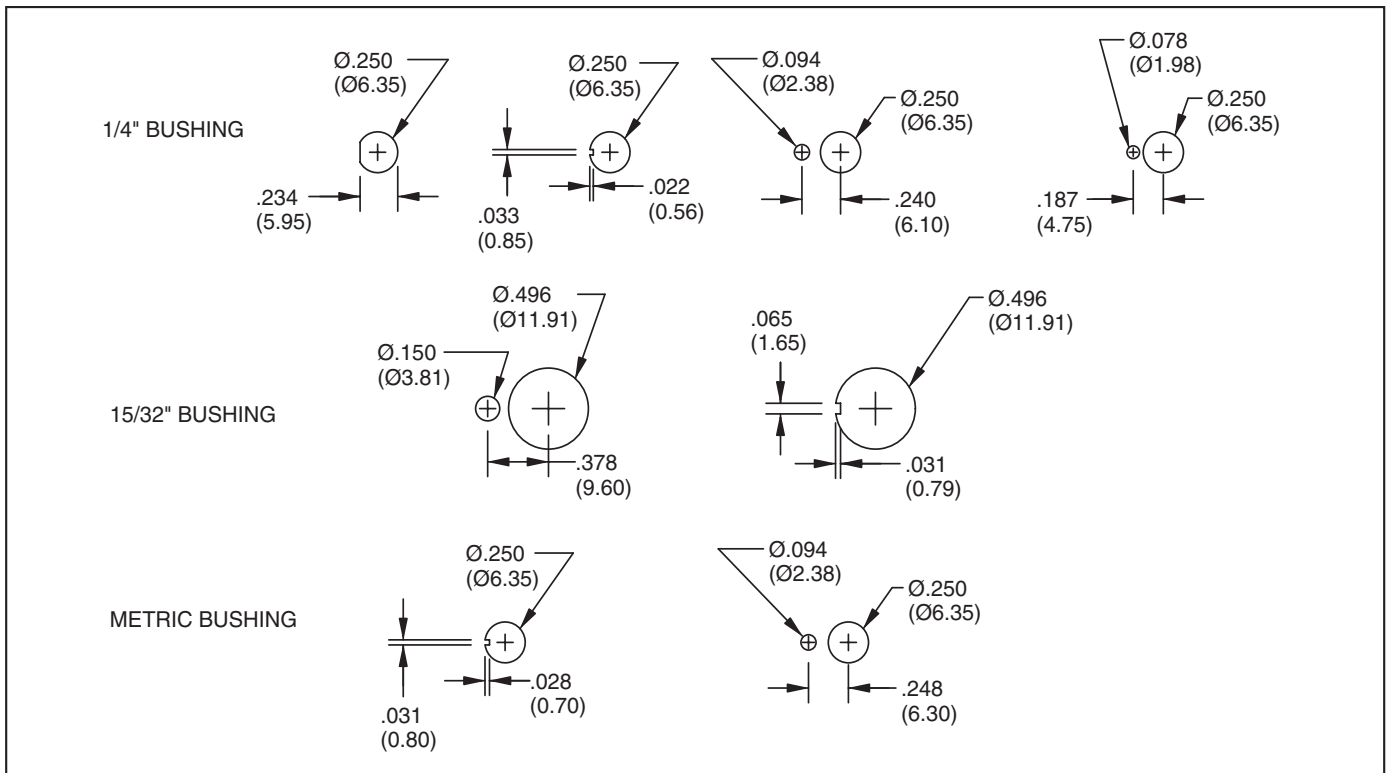


Series 34A: Miniature Toggle Switches

BUSHING OPTIONS in inches (and millimeters)



PANEL MOUNTING in inches (and millimeters)



TERMINATION OPTIONS in inches (and millimeters)

M1	M2	M3	WX										
<p>Solder Lug (Std)</p> <p>THK. .030 (0.76)</p>	<p>P.C. Mount</p> <p>THK. .030 (0.76)</p>	<p>P.C. Mount, Quick Connect</p> <p>.030 (0.76) THK.</p>	<p>WIRE WRAP</p> <table border="1"> <thead> <tr> <th>OPTION CODE</th> <th>DIM. "A"</th> </tr> </thead> <tbody> <tr> <td>W1</td> <td>.750(19.05)</td> </tr> <tr> <td>W2</td> <td>.964(24.48)</td> </tr> <tr> <td>W3</td> <td>.425(10.80)</td> </tr> <tr> <td>W4</td> <td>1.062(26.97)</td> </tr> </tbody> </table>	OPTION CODE	DIM. "A"	W1	.750(19.05)	W2	.964(24.48)	W3	.425(10.80)	W4	1.062(26.97)
OPTION CODE	DIM. "A"												
W1	.750(19.05)												
W2	.964(24.48)												
W3	.425(10.80)												
W4	1.062(26.97)												
<p>M6 Right Angle P.C. Mount, Horizontal Actuation</p> <p>SPDT</p> <p>DPDT</p>	<p>M7 Right Angle P.C. Mount, Vertical Actuation</p> <p>SPDT</p> <p>DPDT</p>												

Toggle Switches

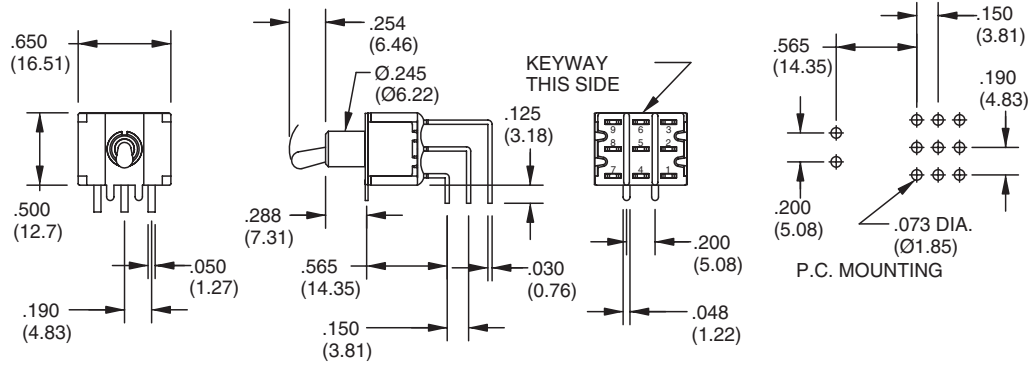


Series 34A: Miniature Toggle Switches

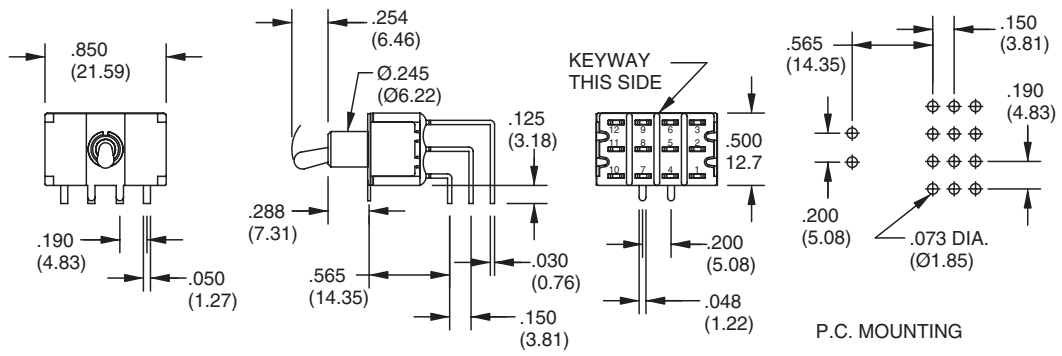
TERMINATION OPTIONS in inches (and millimeters)

M7 Right Angle P.C. Mount, Vertical Actuation

3PDT

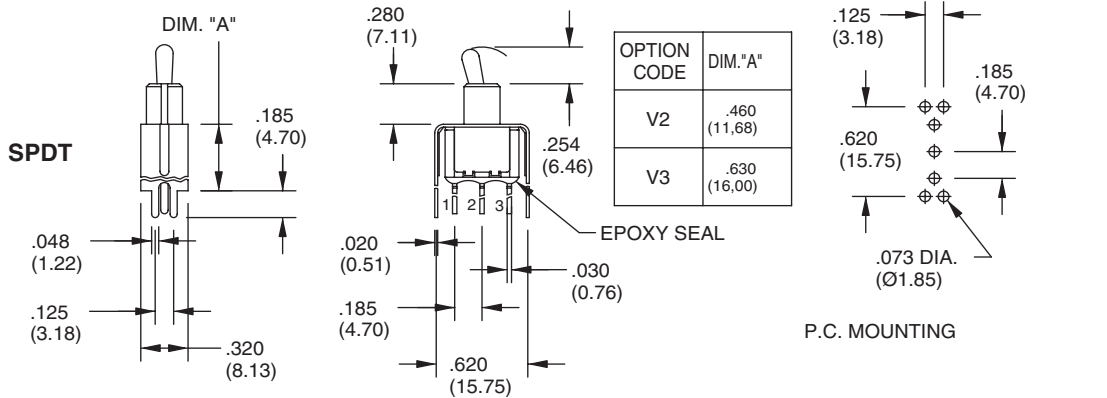


4PDT

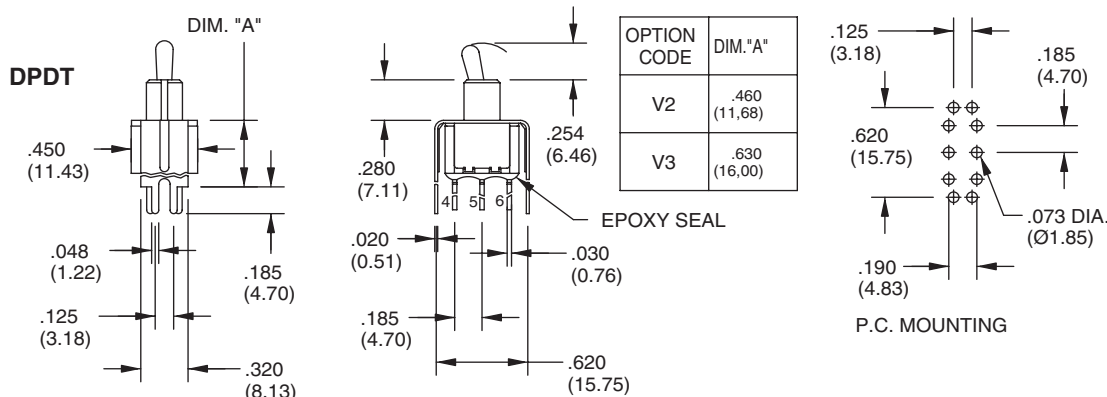


V2-V3 Vertical Bracket P.C. Mount

SPDT



DPDT



SPECIFICATIONS

RATINGS

Contact Rating: Q option - 5A with resistive load @ 125VAC or 28 VDC; 2A with resistive load @ 250 VAC. R option-0.4 VA max @ 20 Vmax (AC or DC)

Electrical Life: 40,000 make-and-break cycles at full load

Contact Resistance: 10 milliohms max. initial @ 2-4 VDC, 100 mA for both gold & silver contacts

Insulation Resistance: 1,000 megaohms minimum

Dielectric Strength: 1,000 V RMS @ sea level

Operating Temperature: -30°C to 85°C

UL Recognition: File number is E35289

MATERIALS

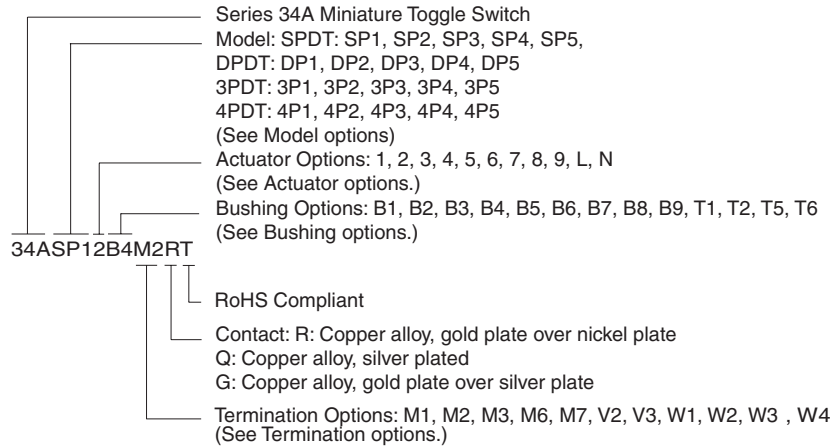
Case: Diallyl phthalate (DAP) (UL94V-0)

Toggle Handle: Brass, chrome-plated

Bushing: Brass, nickle-plated

Housing: Stainless steel

ORDERING INFORMATION



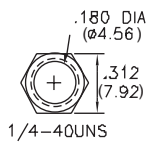
Available from your local Grayhill Component Distributor.

For prices and discounts, contact a local Sales Office, an authorized local Distributor or Grayhill.

HARDWARE in inches (and millimeters)

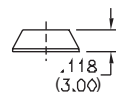
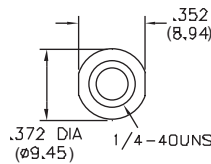
NUTS

Series 34A (Std)



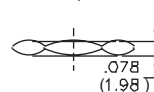
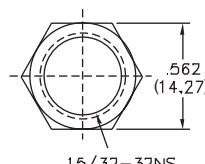
HDW2

Dress Nut



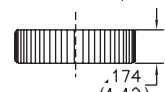
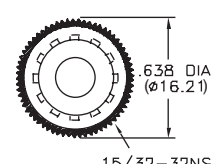
HDW3

For Actuator Options 7, 8 (Std)



HDW4

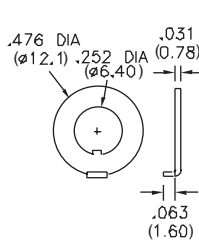
Knurled Nut (Sealed)



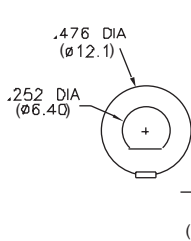
HDW5

LOCKING RINGS

Series 34A (Std)

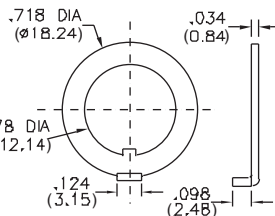


HDW15



HDW16

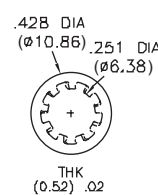
For Actuator Options 7, 8



HDW17

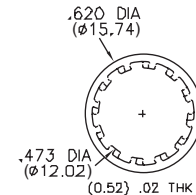
LOCK WASHERS

Series 34A (Std)



HDW11

For Actuator Options 7, 8



HDW12