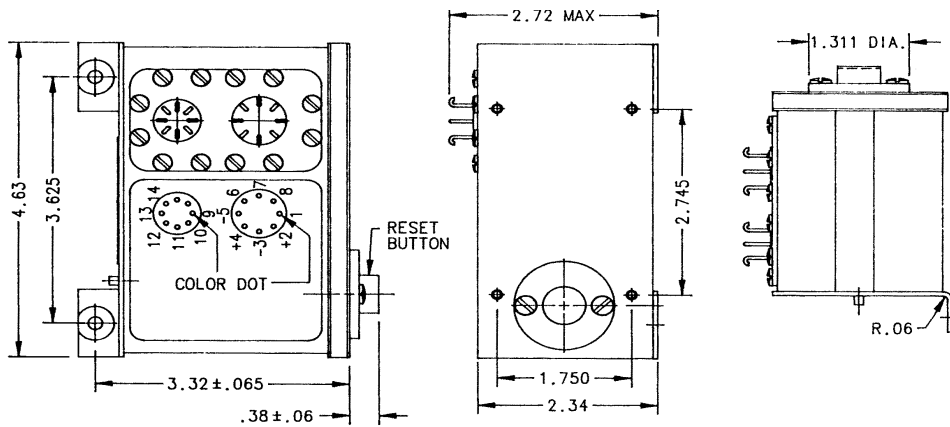


A-837D Armature Relay

15/3 Amps, 28 VDC

Features:

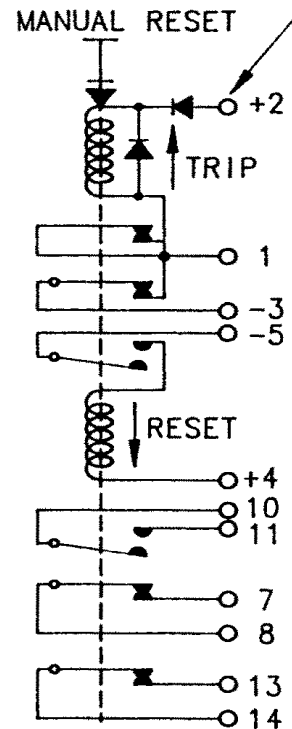
- Latching
- Manual and Electrical Reset
- 15 and 3 Amps
- Trip Time 20 milliseconds
- High Reliability
- Meets many requirements of MIL-R-6106



Dimensions for this product are expressed in inches. Multiply values by 25.4 for millimeters.

CONTACTOR CONFIGURATION

"WILL NOT FUNCTION WHEN VOLTAGE IS PRESENT ON TRIP COIL"



Notes:

PRODUCT SPECIFICATIONS	
Trip Coil:	Nominal VDC 28
Intermittent Maximum VDC	80
Maximum VDC to Trip	11
Coil Resistance at 25°C	16 ±10% Ohms
Reset Coil:	Nominal VDC 28
Intermittent Maximum VDC	45
Maximum VDC to Reset	11
Coil Resistance at 25°C	16 ±10% Ohms
Contacts 7 & 8	28 VDC 15 Amps Inductive
Other Contacts	38 VDC 3 Amps Inductive
Contact Trip Time	20 Milliseconds Maximum at 18 Volts
Ambient Temperature	-65°C to +80°C
Life	5,000 Operations
Weight Maximum	1 Lb. 13 Oz.

For factory-direct application assistance, contact the HARTMAN product team at (419) 521-9500, Fax (419) 526-2749.

© 2004 by Tyco Electronics Corporation. All Rights Reserved. HARTMAN and TYCO are trademarks.

Catalog (web doc only)
Revised 5-04

www.tycoelectronics.com

Dimensions are in inches and millimeters unless otherwise specified. Values in brackets are metric equivalents.

Dimensions are shown for reference purposes only. Specifications subject to change.

USA: 1-800-522-6752
Canada: 1-905-470-4425
Mexico: 01-800-733-8926
C. America: 52-55-5-729-0425

South America: 55-11-3611-1514
Hong Kong: 852-2735-1628
Japan: 81-44-844-8013
UK: 44-141-810-8967