

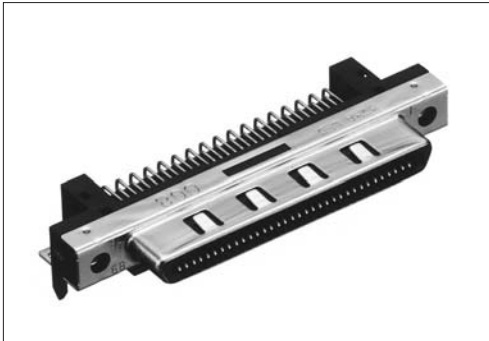
Right-angle through hole type female connector for PCB
 HDRA-EC68LFD T ()-()+

For PCB

Right-angle Through hole

RoHS

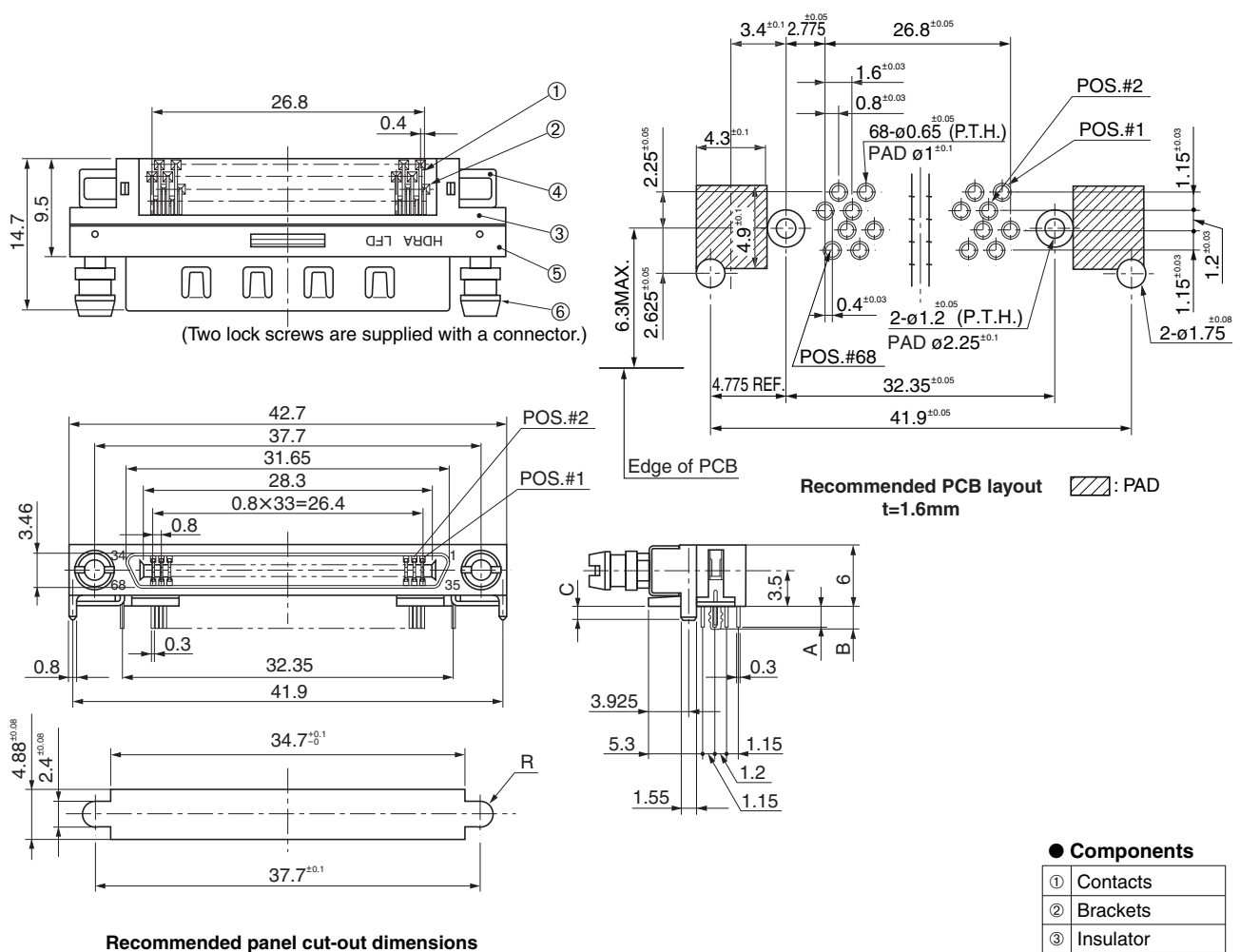
ANSI/SFF8441



● Configuration of product Part No.

HDRA- EC 68 LFD T ()-()+

- | | |
|--|---|
| ① Series name | S : A-2.08 mm contacts |
| ② No. of contacts: 68 | B-2.28 mm board lock pins |
| ③ Type of contact | C-2.3 mm location peg |
| LFD: Right-angle through hole type, female | 2 : A-2.08 mm contacts |
| ④ With board lock pin | B-2.28 mm board lock pins |
| ⑤ Length of contact, board lock pins or location peg | C-1.4 mm location peg |
| Blank: A-2.08 mm contacts | ⑥ Lock screws |
| : B-2.28 mm board lock pins | Blank : None |
| : C-3.7 mm location peg | SL : provided (Thickness of panel: 1.12 mm) |



Mating connector: HDRA series IDC type male cable connector, or straddle SMT type male connector