

Right-angle through hole type male connector for PCB

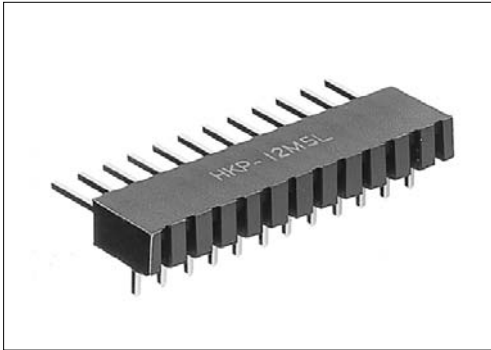
HKP-()M5LS

HKP-()MV5LS+

For PCB

Right-angle Through hole

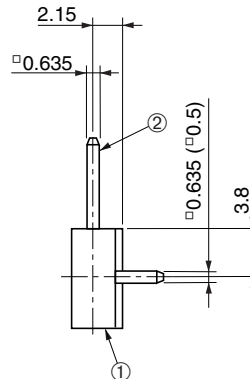
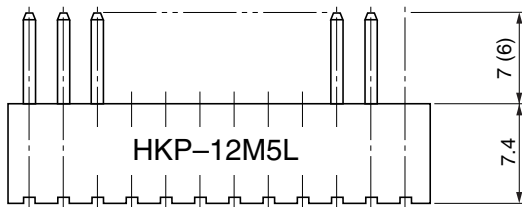
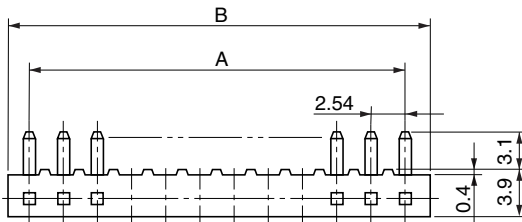
RoHS



● Configuration of product Part No.

HKP- () M () 5L S ()

- ① Series name
- ② No. of contacts: 2-50
- ③ Type of contact
M : Male
- ④⑦ Contact plating
Blank : Gold plate
V / + : Gold plate
- ⑤ Type of contact
L: Right-angle
- ⑥ Contact alignment
S: Single-row type



The value within parentheses indicates the dimension of MV5LS+ connectors.

Part No.	A	B
HKP-15M()5LS()	35.56	38.70
HKP-16M()5LS()	38.10	41.24
HKP-17M()5LS()	40.64	43.78
HKP-18M()5LS()	43.18	46.32
HKP-19M()5LS()	45.72	48.86
HKP-20M()5LS()	48.26	51.40
HKP-21M()5LS()	50.80	53.94
HKP-22M()5LS()	53.34	56.48
HKP-23M()5LS()	55.88	59.02
HKP-24M()5LS()	58.42	61.56
HKP-25M()5LS()	60.96	64.10
HKP-26M()5LS()	63.50	66.64
HKP-27M()5LS()	66.04	69.18
HKP-28M()5LS()	68.58	71.72
HKP-29M()5LS()	71.12	74.26
HKP-30M()5LS()	73.66	76.80
HKP-31M()5LS()	76.20	79.34
HKP-32M()5LS()	78.74	81.88
HKP-33M()5LS()	81.28	84.42
HKP-34M()5LS()	83.82	86.96
HKP-35M()5LS()	86.36	89.50
HKP-36M()5LS()	88.90	92.04
HKP-37M()5LS()	91.44	94.58
HKP-38M()5LS()	93.98	97.12
HKP-39M()5LS()	96.52	99.66
HKP-40M()5LS()	99.06	102.20
HKP-41M()5LS()	101.60	104.74
HKP-42M()5LS()	104.14	107.28
HKP-43M()5LS()	106.68	109.82
HKP-44M()5LS()	109.22	112.36
HKP-45M()5LS()	111.76	114.90
HKP-46M()5LS()	114.30	117.44
HKP-47M()5LS()	116.84	119.98
HKP-48M()5LS()	119.38	122.52
HKP-49M()5LS()	121.92	125.06
HKP-50M()5LS()	124.46	127.60

● Dimensions

Part No.	A	B
HKP-2M()5LS()	2.54	5.68
HKP-3M()5LS()	5.08	8.22
HKP-4M()5LS()	7.62	10.76
HKP-5M()5LS()	10.16	13.30
HKP-6M()5LS()	12.70	15.84
HKP-7M()5LS()	15.24	18.38
HKP-8M()5LS()	17.78	20.92
HKP-9M()5LS()	20.32	23.46
HKP-10M()5LS()	22.86	26.00
HKP-11M()5LS()	25.40	28.54
HKP-12M()5LS()	27.94	31.08
HKP-13M()5LS()	30.48	33.62
HKP-14M()5LS()	33.02	36.16

● Components

①	Insulator
②	Contact

Mating connectors: HKP series single-row type female connector

DIC series