

Cable crimping type female insulator LPC-()PF02

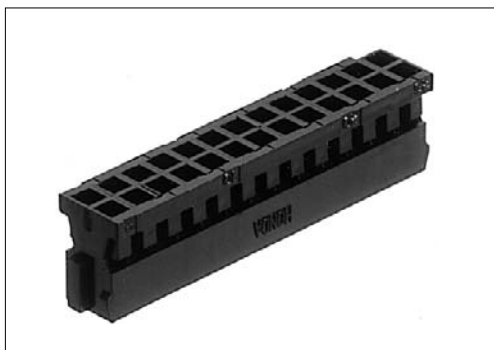
2 mm pitch connector

For cable

Crimping

With a simple lock

RoHS



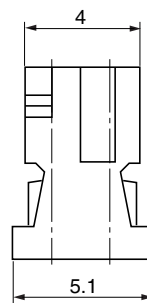
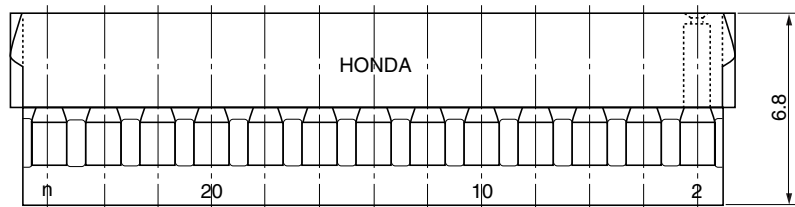
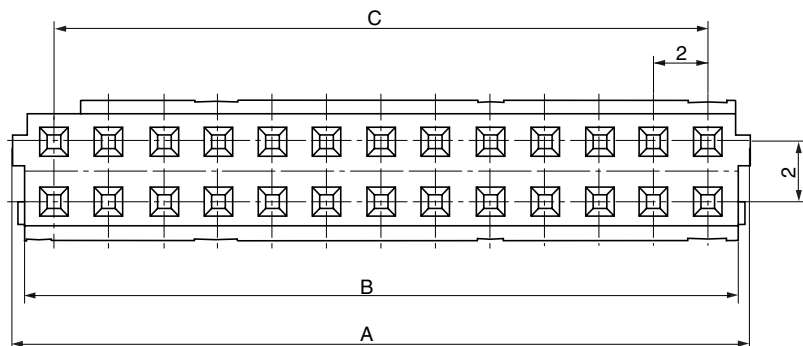
● Configuration of product Part No.

LPC- ()PF02

① ②

① Series name

② No. of contacts: 4, 10, 18, 20 or 26



● Dimensions

Part No.	A	B	C
LPC-4PF02	5.2	4	2
LPC-10PF02	11.2	10	8
LPC-18PF02	19.2	18	16
LPC-20PF02	21.2	20	18
LPC-26PF02	27.2	26	24

For use with contacts: LPC series cable crimping type female contacts

Mating connectors: LPC-()PM2(), LPC-()PM2L()