

Straight through hole type female connector for PCB

PCS-XE()SFD()N()+

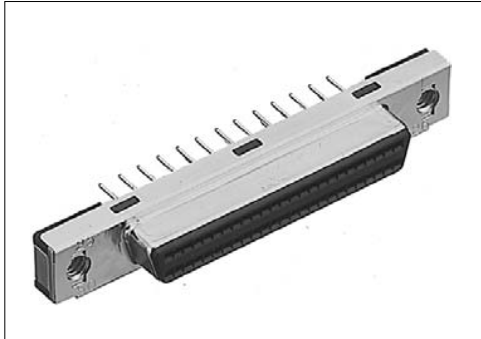
1.27 mm pitch connector

For PCB

Straight Through hole

SCSI-III

RoHS

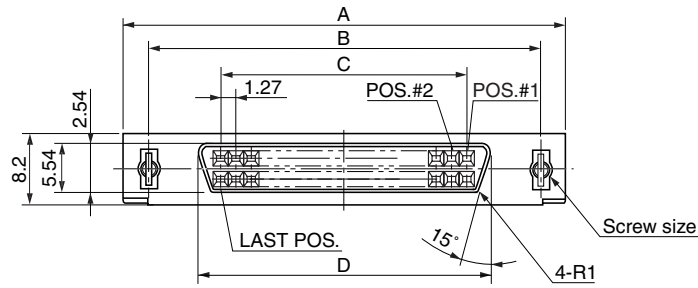


● Configuration of product Part No.

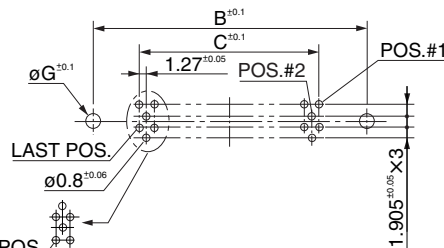
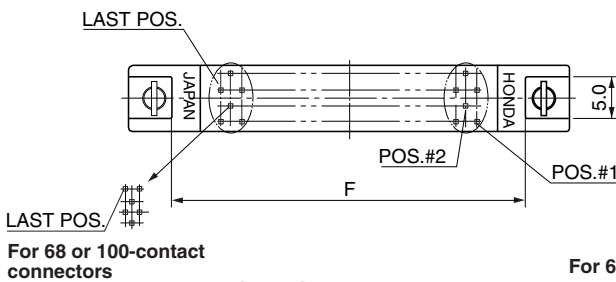
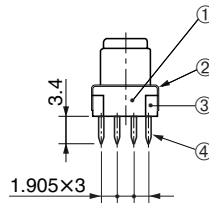
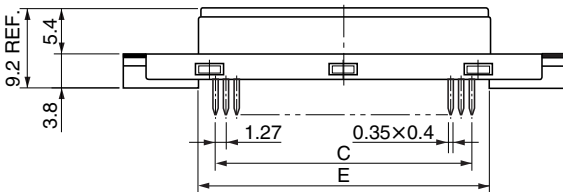
PCS-XE () SFD () N ()+

① ② ③ ④ ⑤ ⑥ ⑦

- ① Series name
- ② No. of contacts: 50, 68 or 100
- ③ Type of shell
- S: Short shell
- ④ Type of connector
- FD: Straight through hole type, female
- ⑤ Screw size
- Blank: M2.5×0.45
- U : #4-40UNC (standard)
- U2 : #2-56UNC
- ⑥ Lock type
- N: Screw lock
- ⑦ Contact plating
- Blank: Min. 0.2 μm Gold plating
- G1 : Min. 0.76 μm Gold plating



Note 1: This 26-contact connector is not available for #4-40UNC and #2-56UNC screws.



● Dimensions

Part No.	A	B	C	D	E	F
PCS-XE50SFD()N()+	52.5	46.5	30.48	34.7	35.24	42.1
PCS-XE68SFD()N()+	63.9	57.9	41.91	46.13	46.67	53.5
PCS-XE100SFD()N()+	84.3	78.23	62.23	66.45	66.99	73.85

● Components

①	Shell A
②	Shell B
③	Insulator
④	Contacts

Because some combinations of "Configurations of Product Part No.", are under consideration for development, please contact us for availability details.

Recommended PCB layout
(Connector side)
t = 1.6 mm

Part No.	Screws size	øG
PCS-XE()SFDN()+	M2.5×0.45	2.8
PCS-XE()SFDUN()+	#4-40UNC	3.05
PCS-XE()SFDU2N()+	#2-56UNC	2.5

Mating connectors: PCS-XE series IDC type male connector