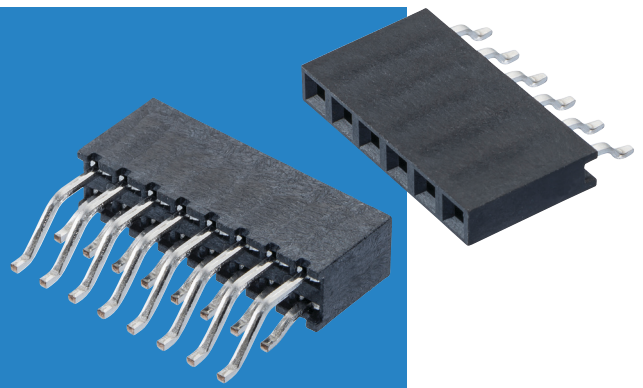


# M22 Connectors

## Female Horizontal Surface Mount

- Rear tail configuration, to allow mounting right up to the edge of the PCB.
- Supplied in Tape and Reel packaging as standard for use in automated assembly systems.



2mm (.079") PITCH

SINGLE ROW	CALCULATION	DOUBLE ROW	CALCULATION								
	<table border="1"> <tr> <td style="background-color: #0056b3; color: white;">A</td> <td>B + 2.3</td> </tr> <tr> <td style="background-color: #0056b3; color: white;">B</td> <td>2 x (No. of contacts per row - 1)</td> </tr> </table>	A	B + 2.3	B	2 x (No. of contacts per row - 1)		<table border="1"> <tr> <td style="background-color: #0056b3; color: white;">A</td> <td>B + 2.3</td> </tr> <tr> <td style="background-color: #0056b3; color: white;">B</td> <td>2 x (No. of contacts per row - 1)</td> </tr> </table>	A	B + 2.3	B	2 x (No. of contacts per row - 1)
A	B + 2.3										
B	2 x (No. of contacts per row - 1)										
A	B + 2.3										
B	2 x (No. of contacts per row - 1)										
<p style="text-align: center;">Recommended PC Board Pattern</p>		<p style="text-align: center;">Recommended PC Board Pattern</p>									

### HOW TO ORDER

M22 - 65 X XX XX R

<b>SERIES CODE</b>	M22 - 65	<b>PACKAGING</b>	R Tape & Reeled
<b>TYPE</b>	X XX XX	<b>FINISH</b>	42 Gold + Tin
<b>NO. OF CONTACTS PER ROW</b>	R	<b>NO. OF CONTACTS PER ROW</b>	02 to 06, 08, 10

All dimensions in mm.