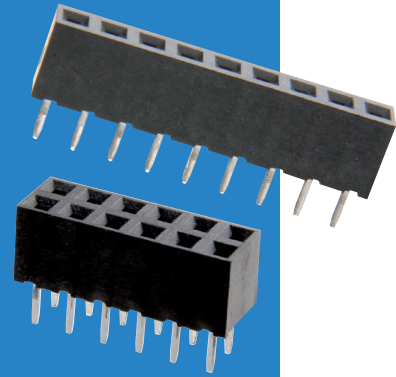


# M22 Connectors

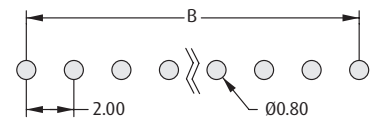
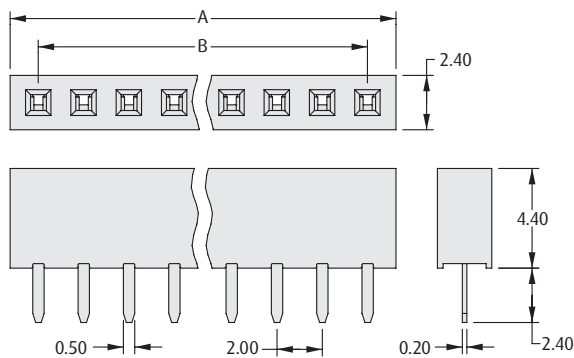
2mm (.079") PITCH

## Female Vertical PC Tail

- Twin beam phosphor bronze contacts.
- Suitable for use with mating M22 male pin headers, with 0.5mm square pins.
- For polarising key use **order code M22-0340000**.



### SINGLE ROW

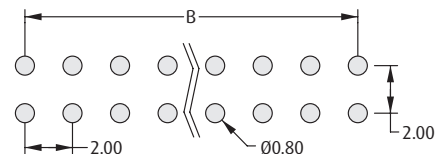
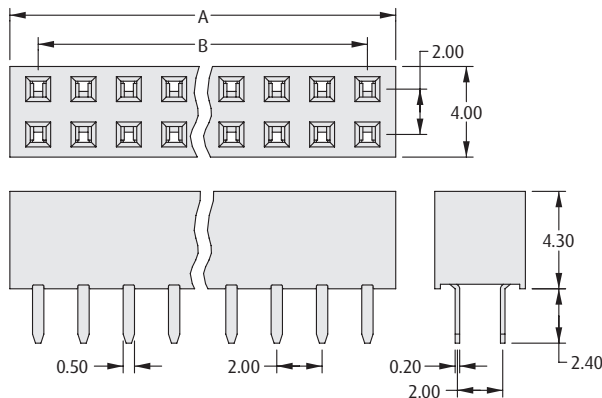


Recommended PC Board Pattern

### CALCULATION

<b>A</b>	$B + 2.5$
<b>B</b>	$2 \times (\text{No. of contacts per row} - 1)$

### DOUBLE ROW



Recommended PC Board Pattern

### HOW TO ORDER

**M22 - 71 X XX XX**

SERIES CODE

NO. OF ROWS

3	Single Row
4	Double Row

FINISH

42	Gold + Tin
----	------------

NO. OF CONTACTS PER ROW

03 to 20, 25	Single Row
03 to 25	Double Row

All dimensions in mm.