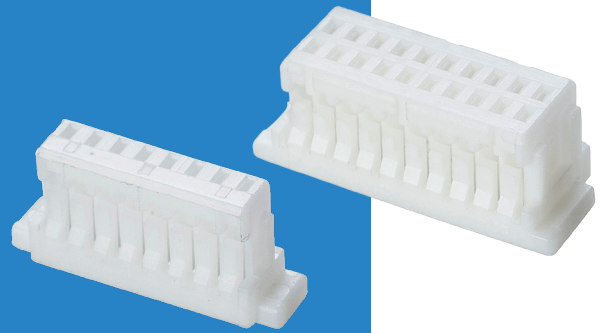


# M40 Cable-to-Board Connectors

## Female Crimp Housings

- ❏ Crimp contacts or pre-cabled contacts are ordered separately - see following pages.
- ❏ Crimped contacts on wires are inserted into rear of connector housing - no additional tooling required.



1mm (.039") PITCH

| SINGLE ROW | CALCULATION                          | DOUBLE ROW | CALCULATION                          |
|------------|--------------------------------------|------------|--------------------------------------|
|            | <b>A</b> B + 4                       |            | <b>A</b> B + 4                       |
|            | <b>B</b> No. of contacts per row - 1 |            | <b>B</b> No. of contacts per row - 1 |
|            |                                      |            |                                      |

### HOW TO ORDER

**M40 - 1X0 XX 00**

**SERIES CODE**

**TYPE**

|            |            |
|------------|------------|
| <b>110</b> | Single Row |
| <b>120</b> | Double Row |

**NO. OF CONTACTS PER ROW**

|                                 |            |
|---------------------------------|------------|
| <b>02 to 20</b>                 | Single Row |
| <b>05 to 10, 12, 15, 20, 25</b> | Double Row |

All dimensions in mm.